

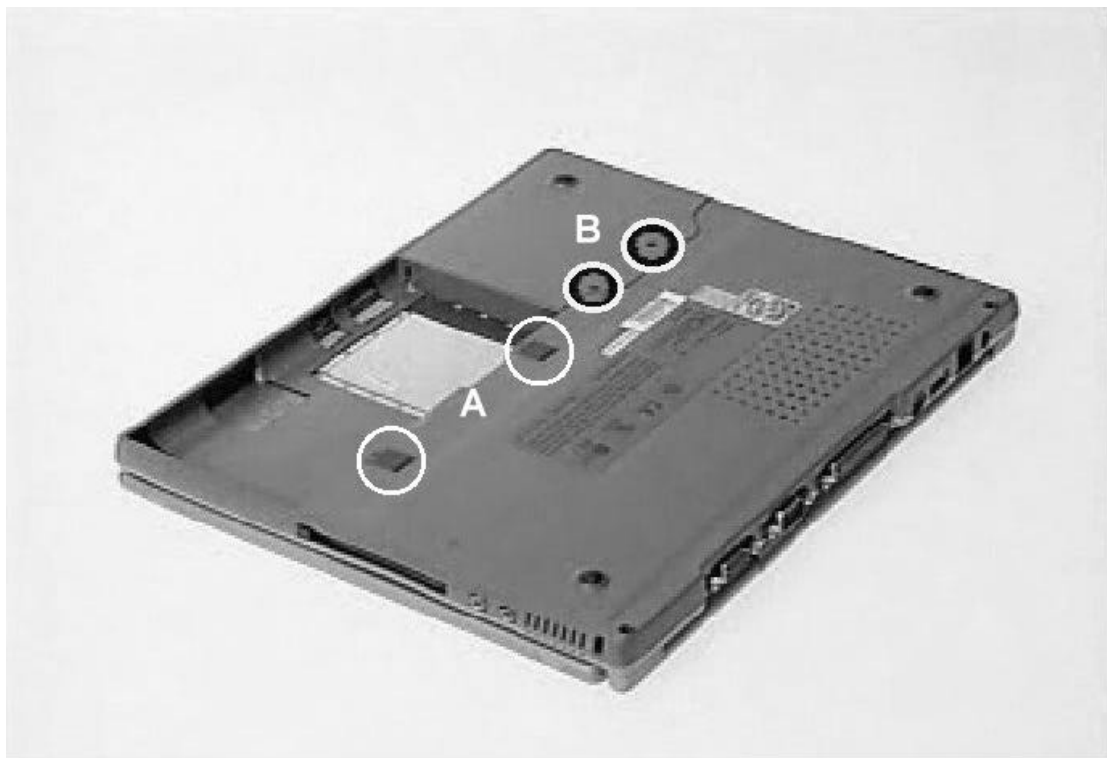
SYSTEM DISASSEMBLY INSTRUCTIONS

Before starting the disassembly take notice of the ESD warning below.

⚠ Warning! All the components in the computer can be damaged by static electricity (E.S.D. - Electro Static Discharge). Discharge yourself and any tool you use to ground (e.g. computer chassis) before touching or removing a component. Place removed components in anti-static bags.

Battery and Hard Disk Drive Removal

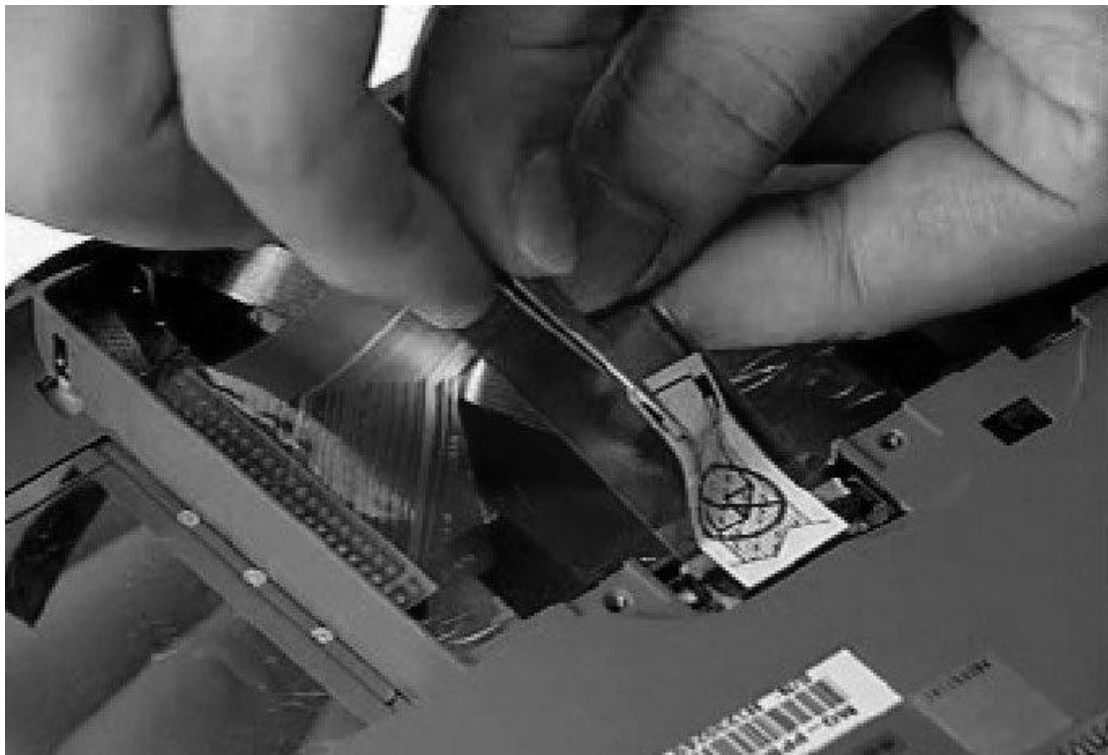
- 1- Turn over the unit, unlatch the battery by shifting the two clips (Picture below, Item A) and remove it.
- 2- Instructions for removing the hard disk drive:
 - a- Remove the two screws (Picture below, Item B) of the hard disk cover.



- b- Take off the hard disk drive (HDD) cover.
- c- Lift the drive out and carefully disconnect the flatcable and take away the drive.



- d- Disconnect the HDD flatcable from the mainboard by removing the caution label with a pair of tweezers and carefully unlocking the cable.



Removing the Keyboard

- 1- Remove the two screws at the corner of the base (location shown in the picture).



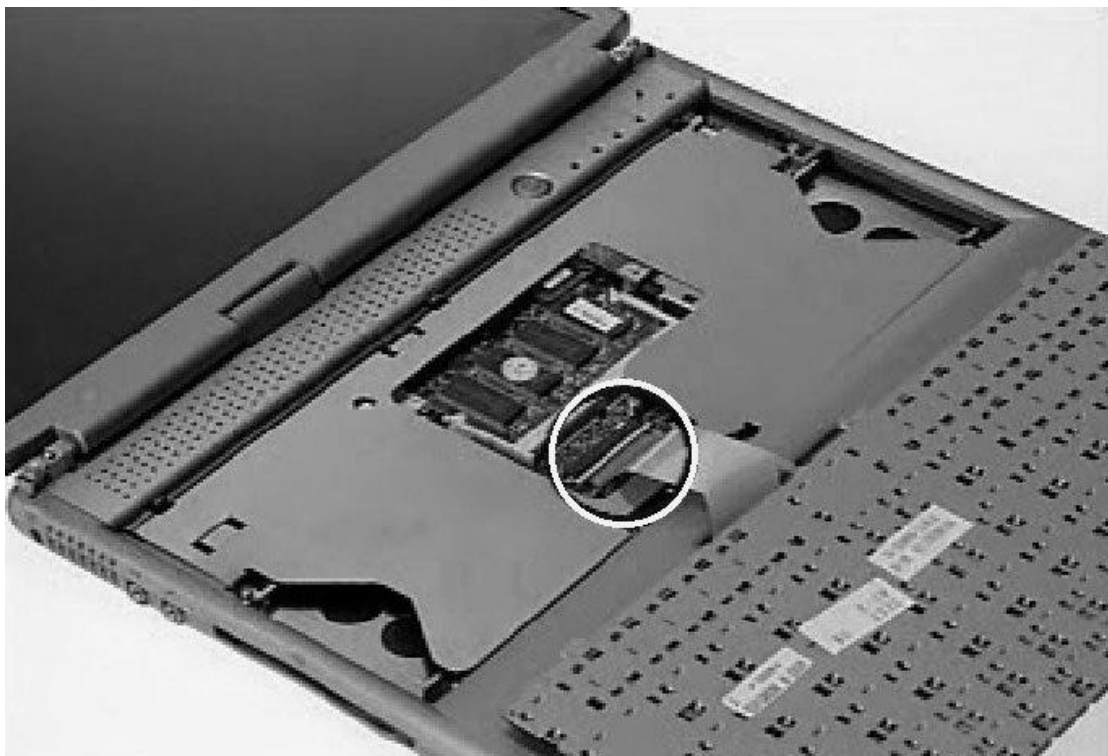
- 2- Turn over the unit, open the LCD panel and remove the two hinge caps by shifting them sideways.



- 3- Lift the keyboard a little with a flatbed screwdriver and unlock the three spring latches between the <Esc> and <F1> keys, the <F7> and <F8> keys, and the <Pause> and <Page Up> keys.

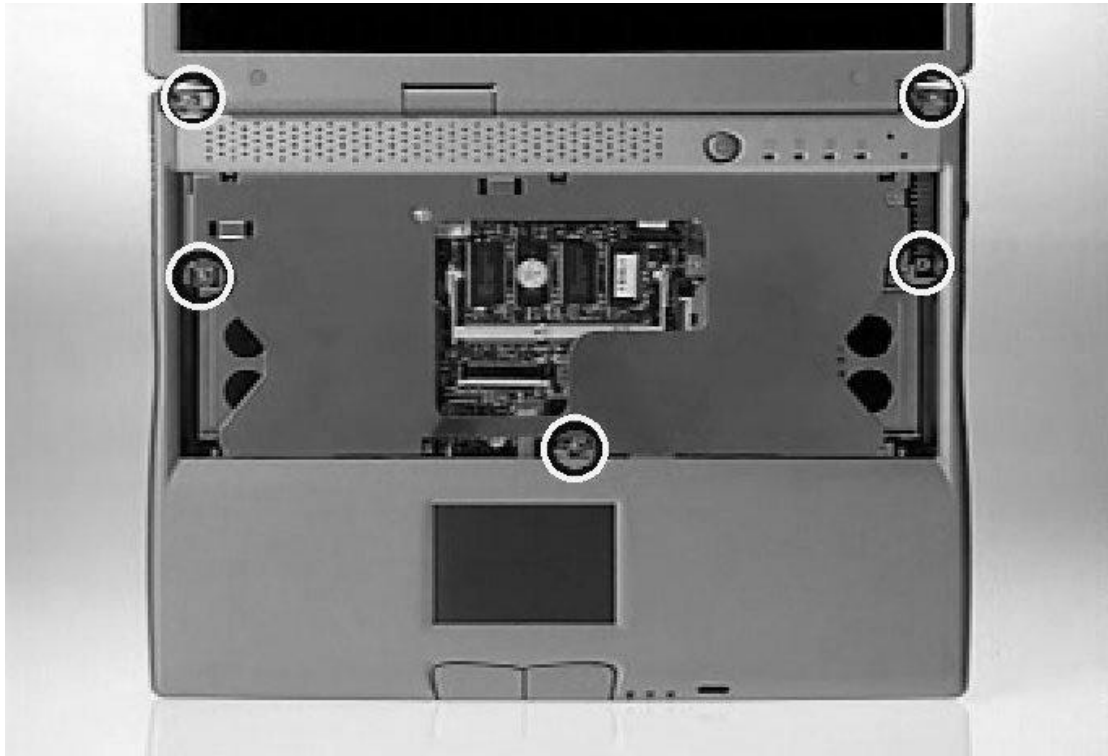


- 1- Unlock the connector, free the keyboard cable and take away the keyboard.



Taking Off the LCD Panel

- 1- Remove the five screws that secure the speaker cover.
- 2- Remove the speaker cover.



- 3- Remove the harness cap that covers the cable leading from the mainboard to the LCD panel (see picture). You may want to use a flatbed screwdriver.



- 4- Remove the screw that secures the LCD connector.
- 5- Disconnect the LCD connector.
- 6- Take away the LCD panel from the base unit.



LCD Panel Disassembly

- 1- First remove the four rubber pads that cover the screws of the display panel. Then remove the four screws. Take notice that the two top screws differ from the two bottom screws.



- 2- Carefully peel the display bezel of the LCD module and remove the cover latch. This latch consists of the LCD hook (metal), the LCD hook button (plastic) and LCD hook spring.



- 3- Remove the four screws that secure the LCD panel.



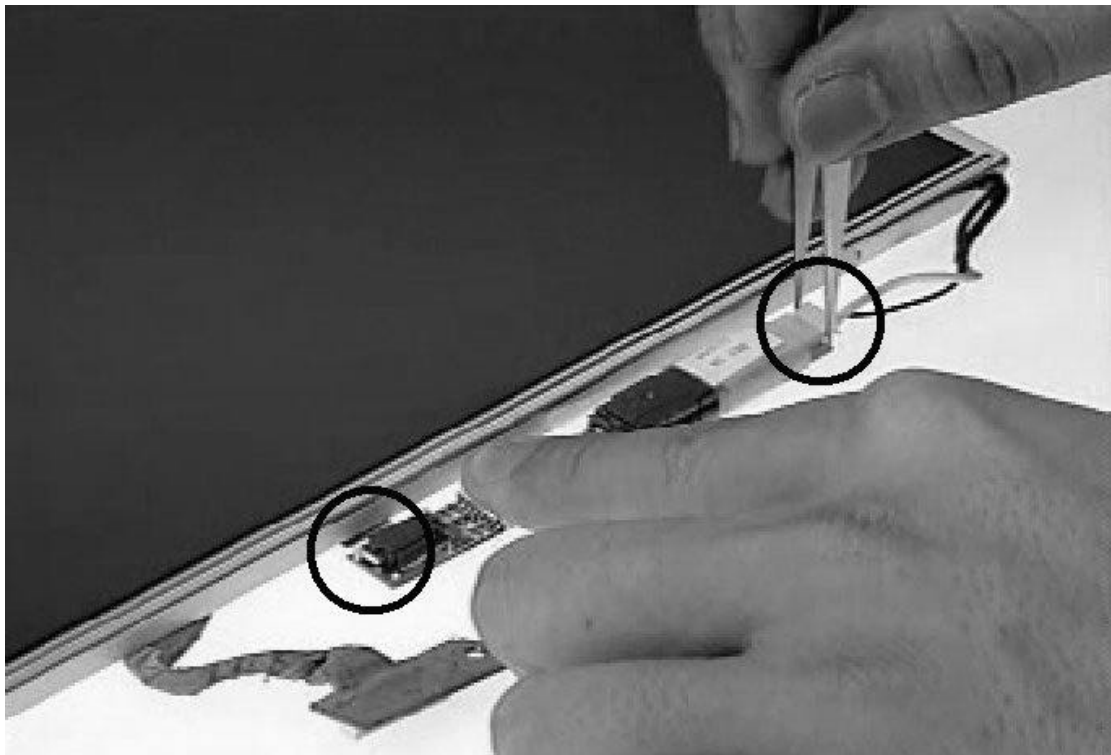
- 4- Remove the screw that secures the hinge on the right side and remove the hinge itself.



- 5- Insert a flatbed screwdriver between the Inverter and the panel and release it by lifting it. This allows you to take out the LCD screen together with the inverter.

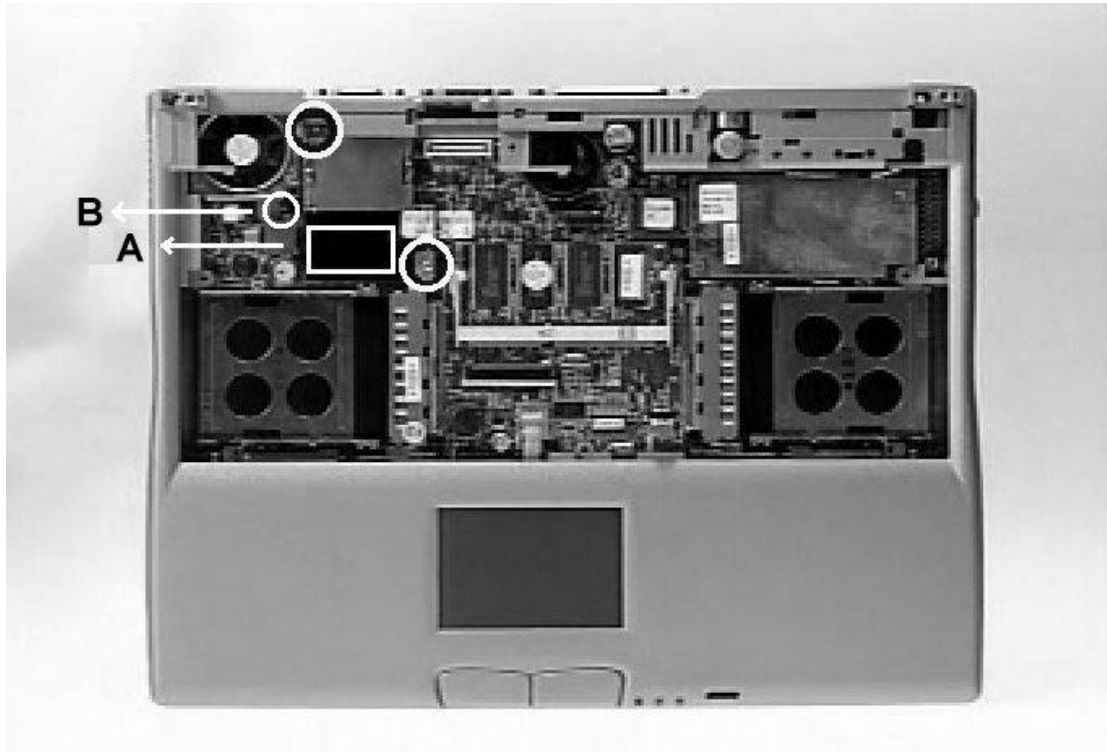


- 6- To remove the Inverter disconnect the two cables that connect the screen to the inverter.



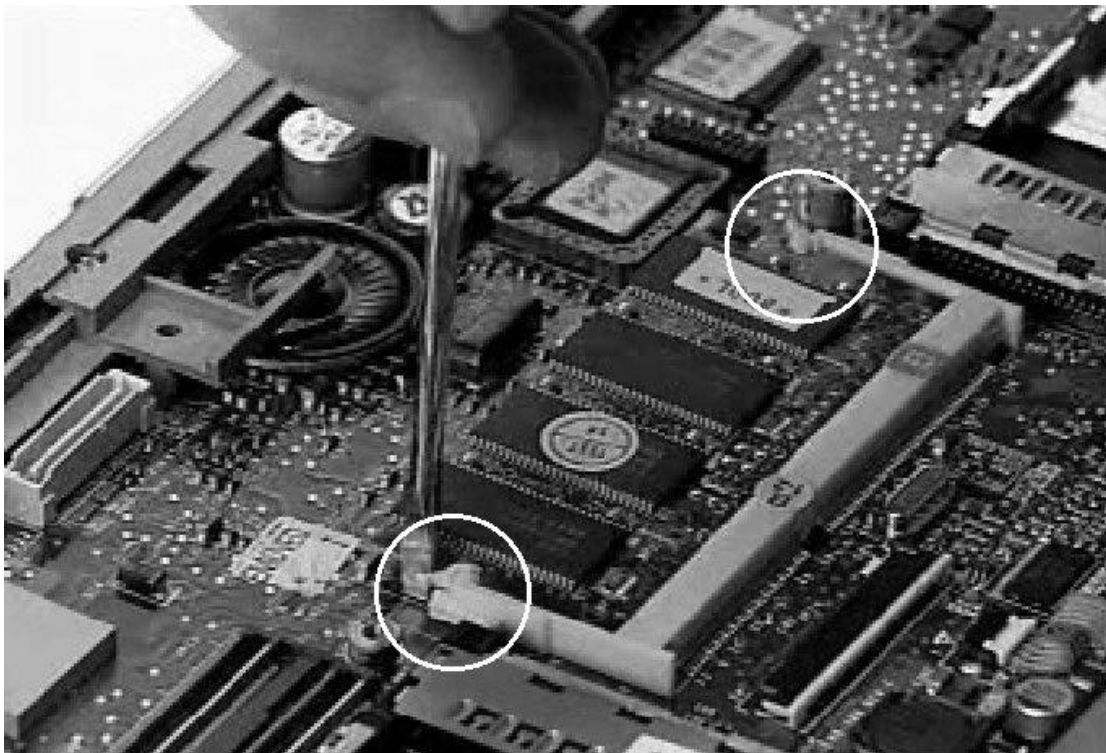
Removing the CPU Module

- 1- Carefully remove the two screws that secure the CPU module.
- 2- Disconnect the CPU holding clip that is fastened by a screw in the area marked by "B".
- 3- Take out the module by disconnecting the two connectors under the module in the area marked by "A".



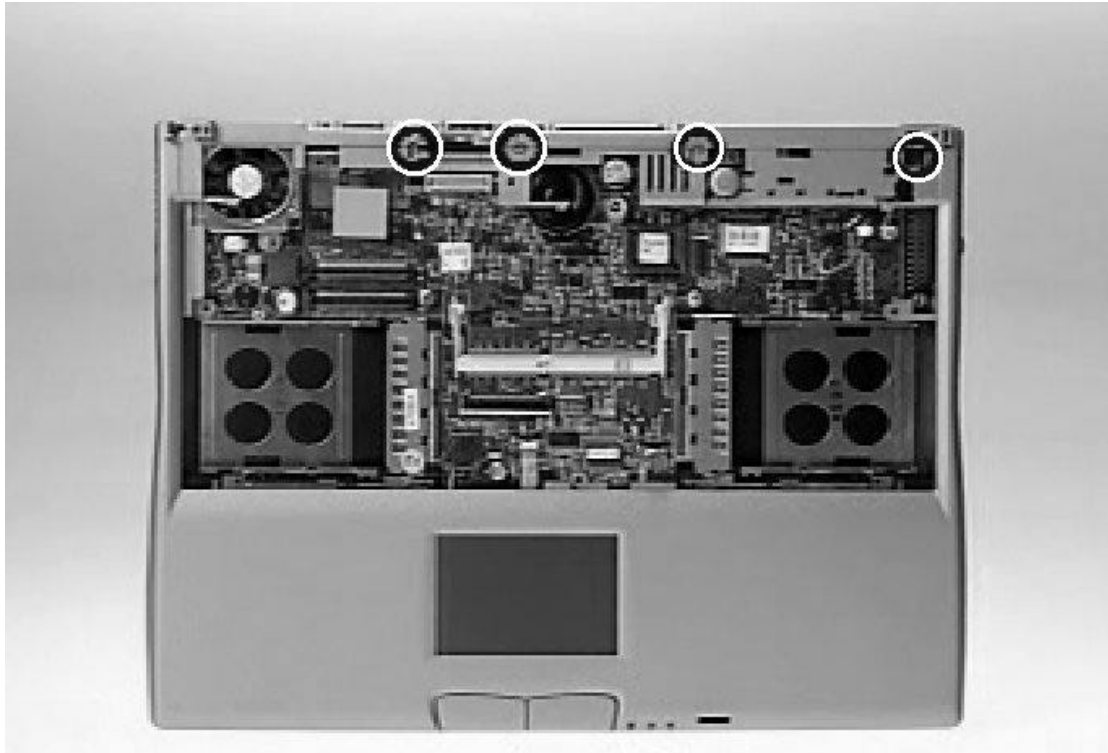
Removing the Memory Module (if applicable)

- 1- Pull the memory latches outwards to release the memory module and take it out.

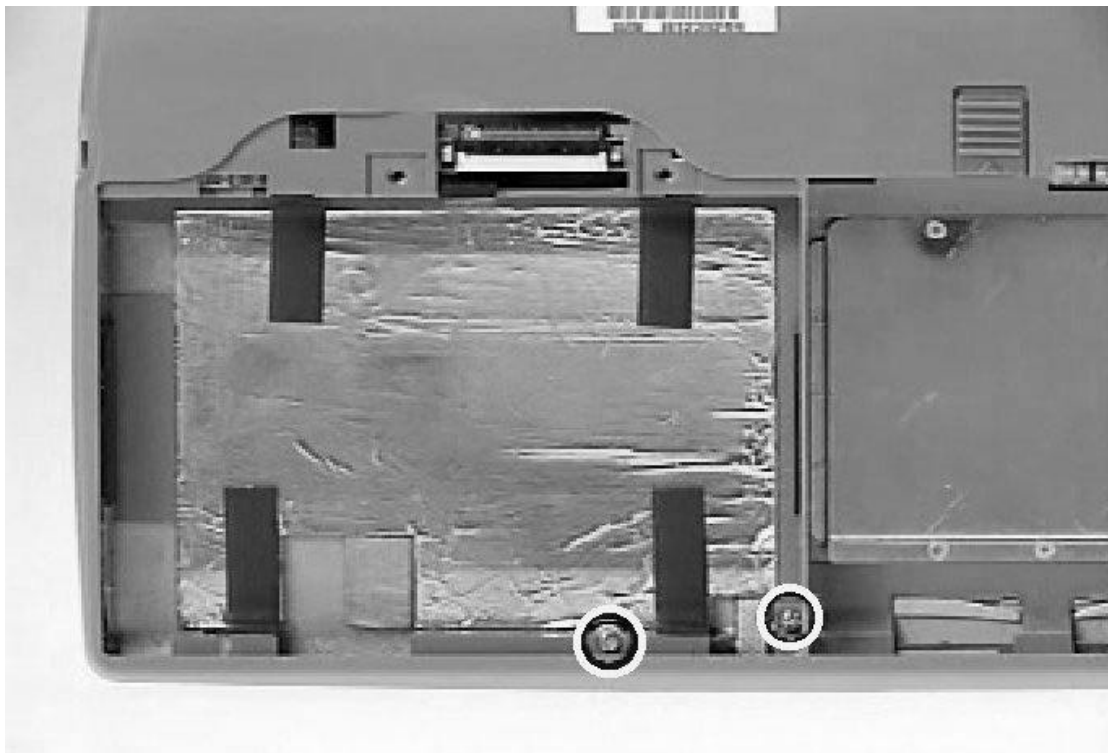


Removing the Upper Cover

- 1- Remove the four screws on the upper cover.



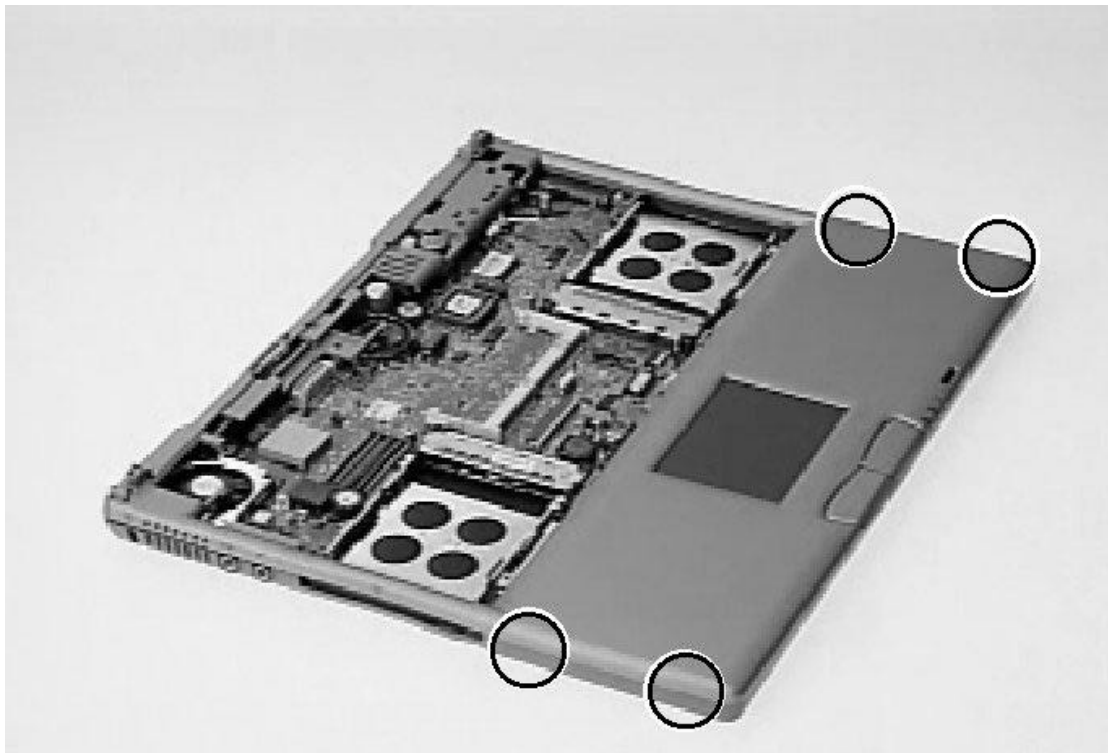
- 2- Turn over the unit and remove the two screws in the hard disk drive compartment.



- 3- Now turn the unit back over again and, carefully, disconnect the three cables connecting the touchpad, the touchpad buttons and the internal microphone to the mainboard.

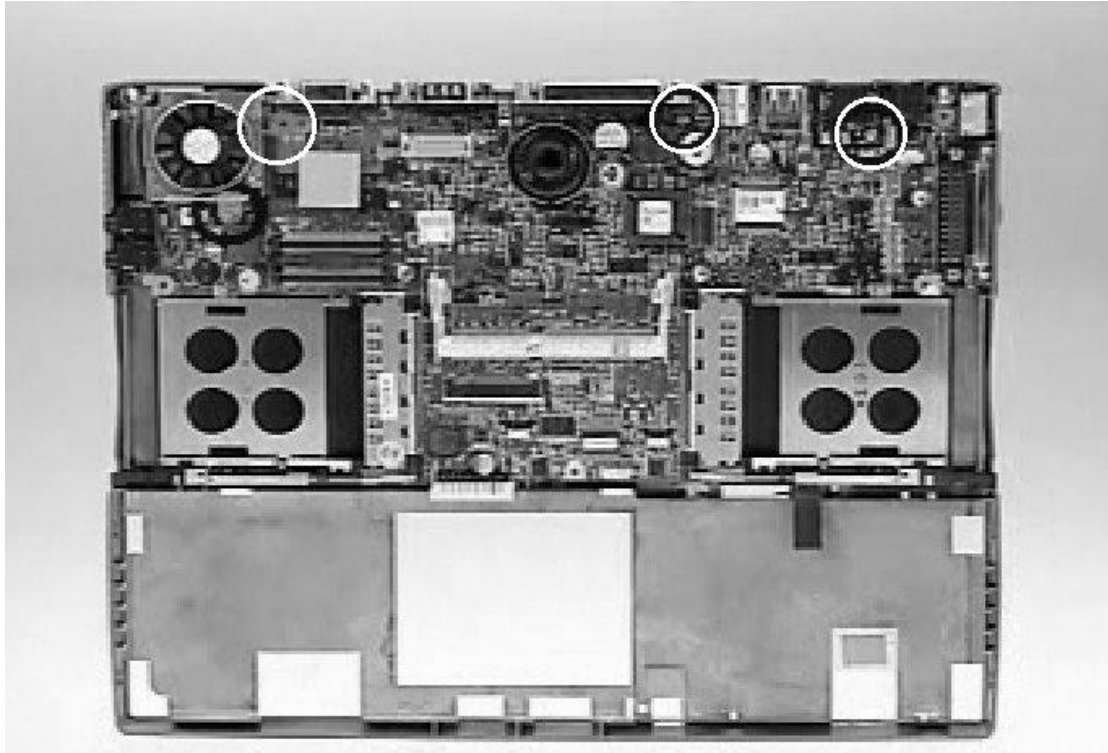


- 4- Apply inward force to the four points indicated to release the upper cover. You might want to use a flatbed screwdriver to release the clips on the indicated positions from the inside.



Removing the Mainboard

- 1- Remove the three screws of the mainboard.
- 2- Remove the fan while taking notice of its position (there is a small arrow visible on the top right corner of the fan).
- 3- Take out the mainboard.



SYSTEM RE-ASSEMBLY INSTRUCTIONS

Reassembly is the reverse of the disassembly process. Use care to insure that the cables and screws are returned to their proper positions.