

2. Disassembly Steps

1.0 BATERRRY/Remote Control

1.1 RAM Module

1.2 HDD

1.3 ODD

1.4 Keyboard

1.5 WLAN Card

1.6 Speaker

1.7 Top Case

A. TouchPad:(Mylar/ FFC/ button bracket/button board)

B. HotKey Board

1.8 LCD Module

A. LCD Bezel

B. Inerter

C. Hinge Cover

D. LCD Cover

E. LCD Bracket

F. Panel Unit

1.9 Thermal Module

2.0 CPU

2.1 Modem Module/RJ11 Cable/DC-In Board

2.2 Audio Transfer Board/ Speaker cable/Audio I/O Board

2.3 Mother Board/ VGA I/O Board

1.1 RAM MODULE

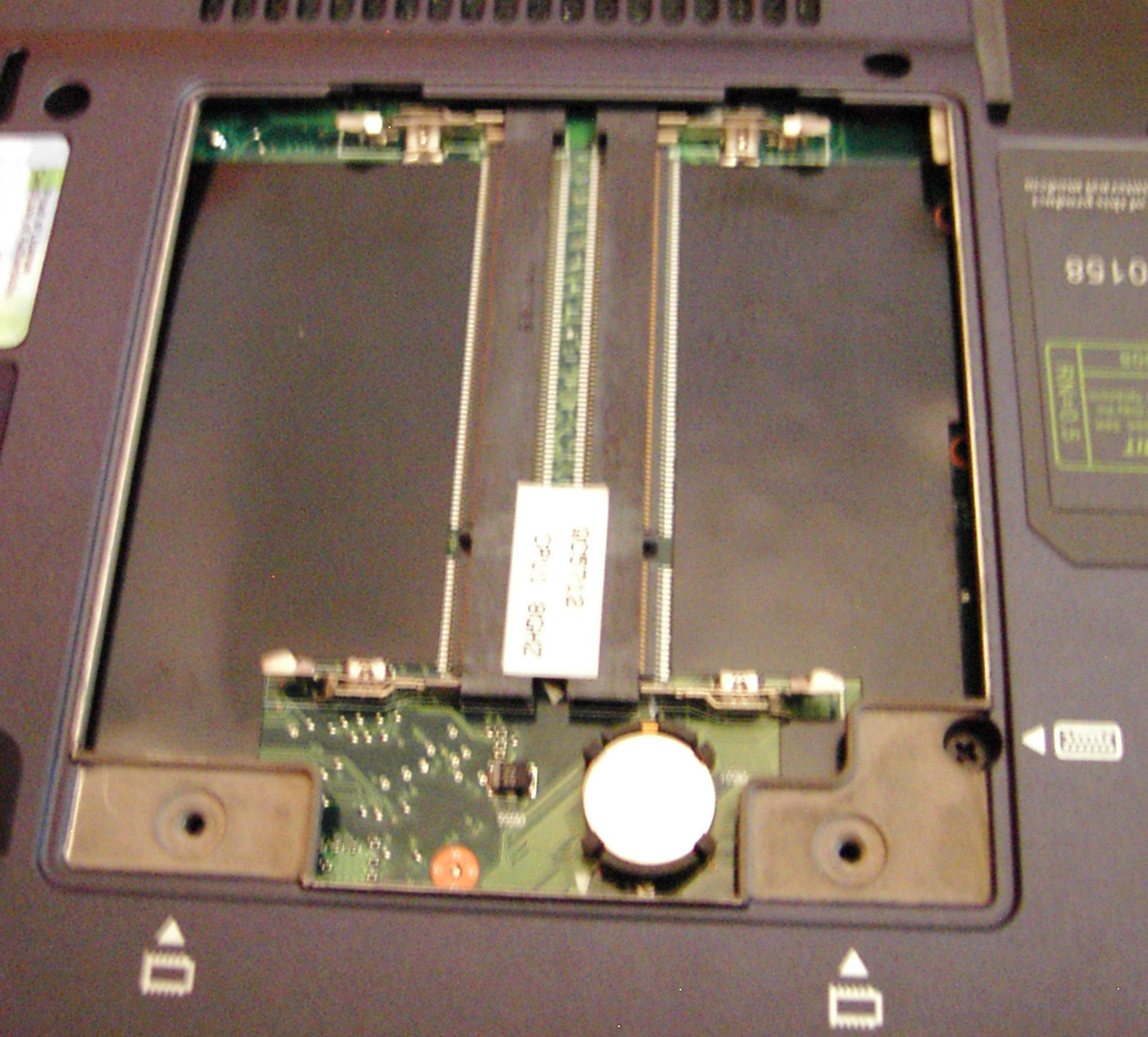
- 1) Remove 2 screws and RAM door can be removed.
- 2) Release the RAM catch on both side. RAM module can be removed.



1.2 HDD (Hard Disk Drive)

- 1) Remove 2 screws and HDD door can be removed .
- 2) Pull the HDD carefully with black tape.





Intel Core i7-8550U
CPU 8042

of this product
0158
STORAGE

BIOS



1.3 ODD (Optical Disk Drive)



1.4 KeyBoard

- 1) Remove Ram Door first.
- 2) Remove 3 screws as indicated.



- 2) Turn over the Joybook and release the latch of keyboard as shown.
- 3) Disconnect the keyboard cable then keyboard can be removed.



1.5 Wireless LAN Board

- 1) Remove Keyboard first as above steps.
- 2) Remove the wireless antenna connector on board as shown



[The main wire color: Gray]



1.6 Speaker

- 1) Remove Battery first.
- 2) Release 3 screws on battery space as shown.



- 2) Release the cable on speaker then separate the speaker module.



1.7 Top Case

- 1) Release 12 screws on the bottom case.
- 2) Release 4 screws on the bottom of battery.
- 3) Remove ODD first then release 3 small screws.



- 4) Remove the Touchpad FFC and Hot key board Cable as indicated.



A. TouchPad (Mylar/ FFC/ button bracket/button board)

- 1) Tear down the mylar on touchpad.
- 2) Release 2 screws on the touch pad button bracket.
- 3) Release 2 FFC as indicated.
- 4)



- 3) Separate touch pad button board and bracket.



B. Hotkey Board

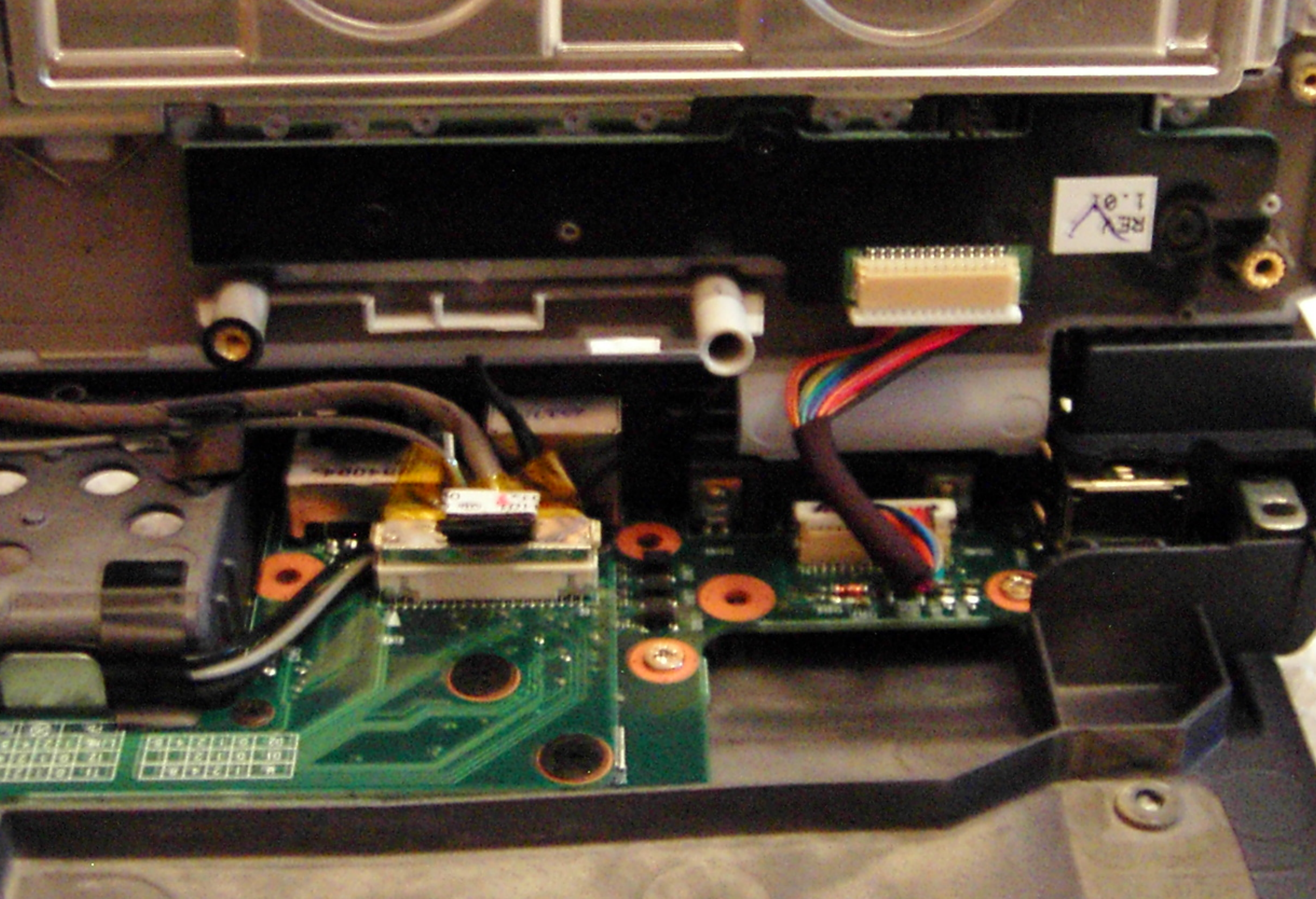
- 1) Release 3 screws on hotkey board.
- 2) Release cable as indicated, then separate hotkey board.



1.8 LCD Module

- 1) After Step 1.7 (Remove Top Case first).
- 2) Remove 2 switch covers carefully.





REV 1.01

10

11	01	12	4	A
12	01	12	4	A
13	01	12	4	A
14	01	12	4	A
15	01	12	4	A
16	01	12	4	A
17	01	12	4	A
18	01	12	4	A
19	01	12	4	A
20	01	12	4	A

A. LCD Bezel

1) Release 2 screw rubbers and screws on LCD Bezel.



2) Remove LCD Bezel.(Direction: Inside to outside)



B. Inverter

1) Remove inverter cable.



1.0 BATTERY /Remote Control

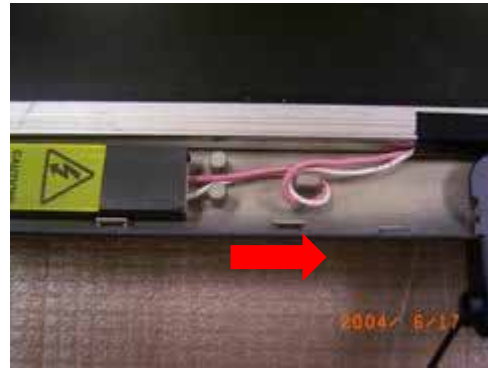
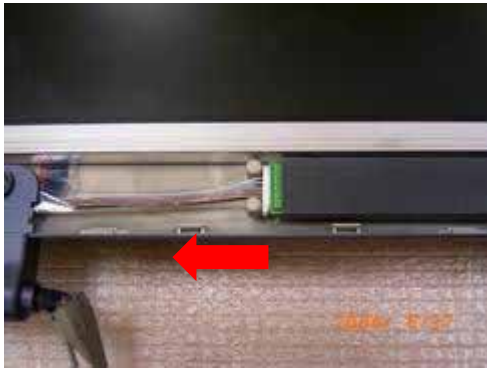
- 1) Reverse Joybook .
- 2) Move battery locker and battery can be lift .



3) Remote Control

Push the PC Card Ejection Button from the left side of machine.
You can Get remote Control.





C. Hinge Cover

1) Release 2 screws on hinge cover(L/R).





2) Release 2 screws as shown.



3) Release 2 screws on LCD bracket as shown.



4) Release LCD Cable then take out the LCD module.



D. LCD Cover

1) Release 2 screws on LCD Bracket(L/R).



2) Release 4 screws on LCD Bracket(L/R).



5) Then separate Panel Unit and LCD Cover.

4) Release 2 screws on antenna as indicated.





E. LCD Bracket

- 1) Release 4 screws on both side of panel then LCD and bracket can be separated.



F. Panel Unit

- 1) Release panel cable carefully.

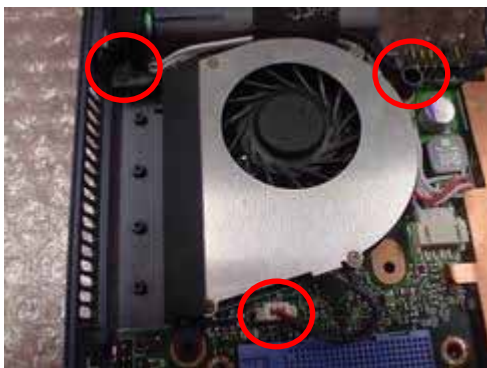


1.9 Thermal Module

1) Release 4 screws on Heatsink.



3) Remove 2 screws and cable on Thermal Fan.



2.0 CPU

1) After 1.9 step, loose the flat screw then CPU can be taken out.



2.1 Modem Module/RJ11 Cable/DC-In Board

1) Remove 2 screws and cable on modem as shown.



2) Release DC-In Board connector.

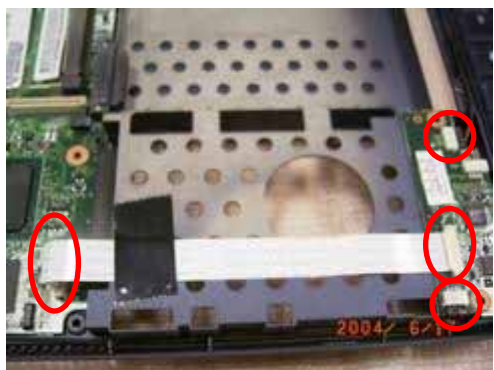


3) Carefully tear the tape then separate RJ11 Cable and DC-In board.



2.2 Audio Transfer Board/ Speaker cable/ Audio I/O Board

- 1) Remove FFC on audio board. (Place: Above Audio I/O Board)
- 2) Release the speaker cable and mic cable as shown.
- 3) Carefully release connector and remove the audio transfer board.



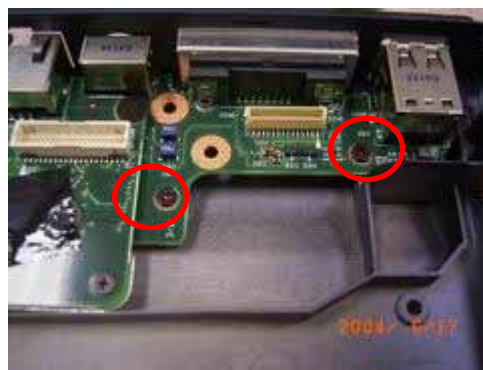
1) Remove 2 screws then detach Audio I/O board as shown.



2.3 Motherboard/ VGA I/O board

1) Remove PCMCIA Dummy card.

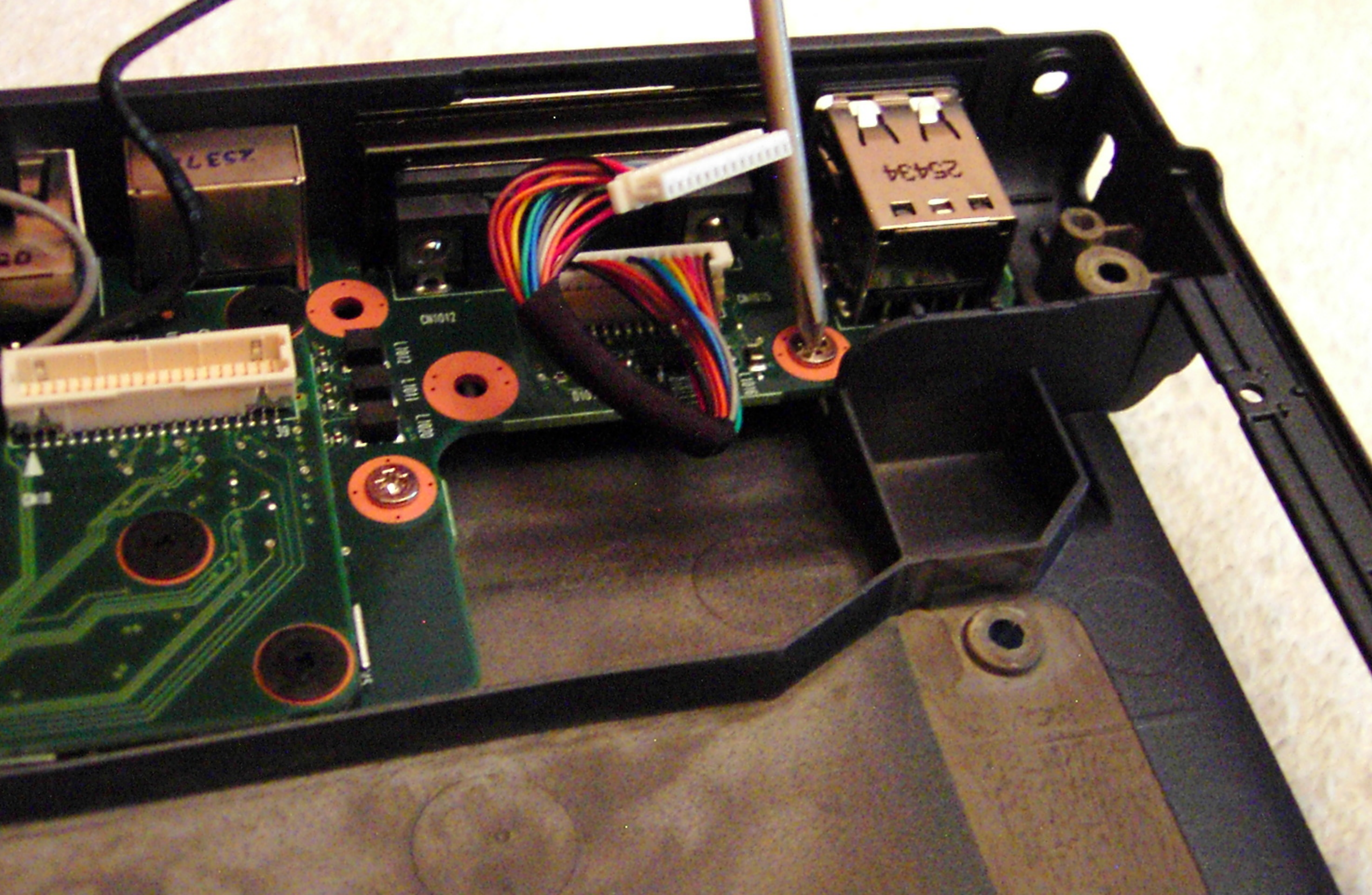
2) Remove 2 screws in VGA connector board.



2) Remove 1 screw on PCMCIA Bracket and 1 screw on MB.

3) Carefully detach Motherboard.





IEC S/N: G1587801
PN CS-SANJIL001 Rev. 2.0M
9D SYSTEM 94M0 D.UM 0.00
MAC: 000390758786

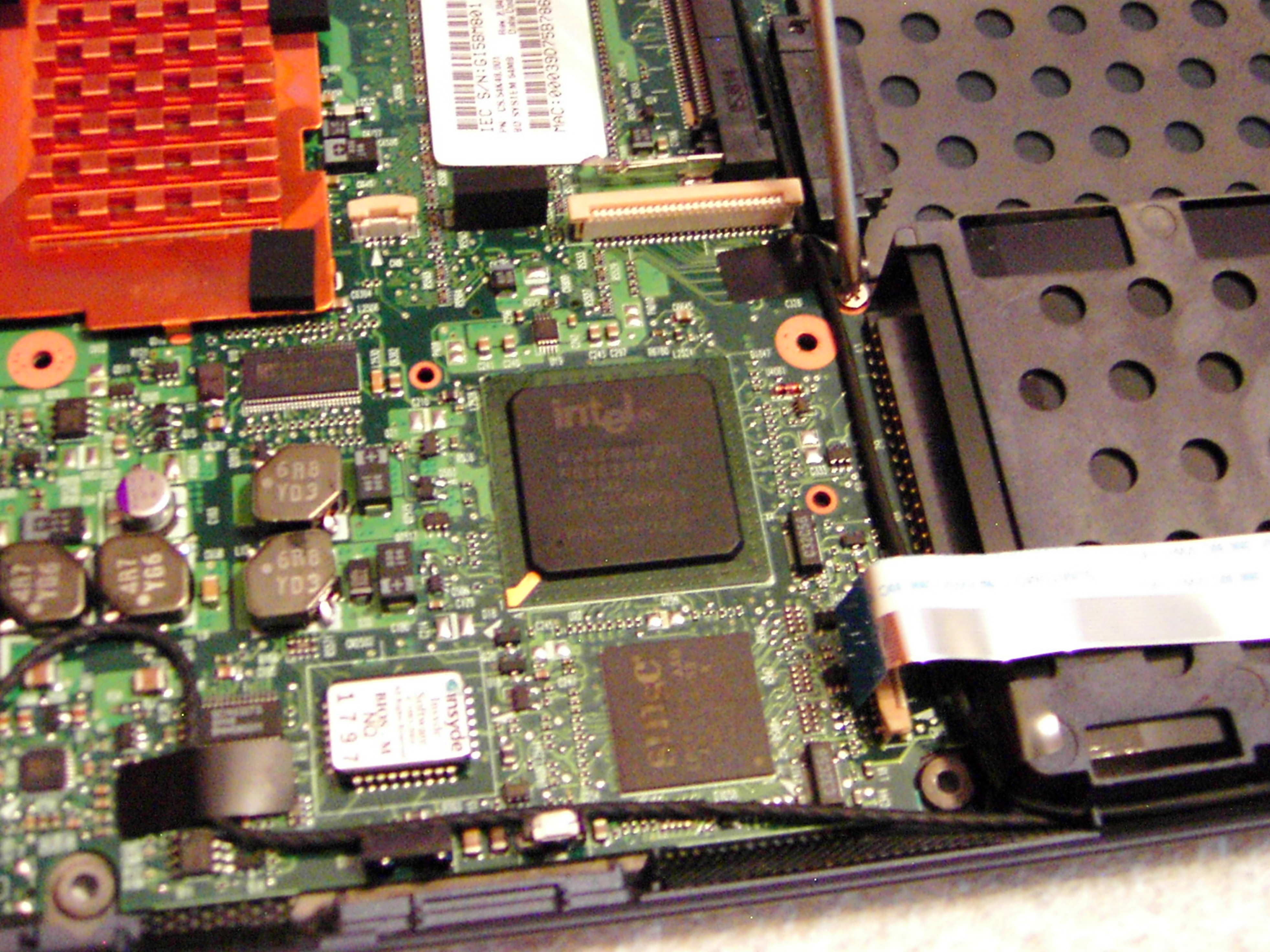
insyde
System
NO. M
1797

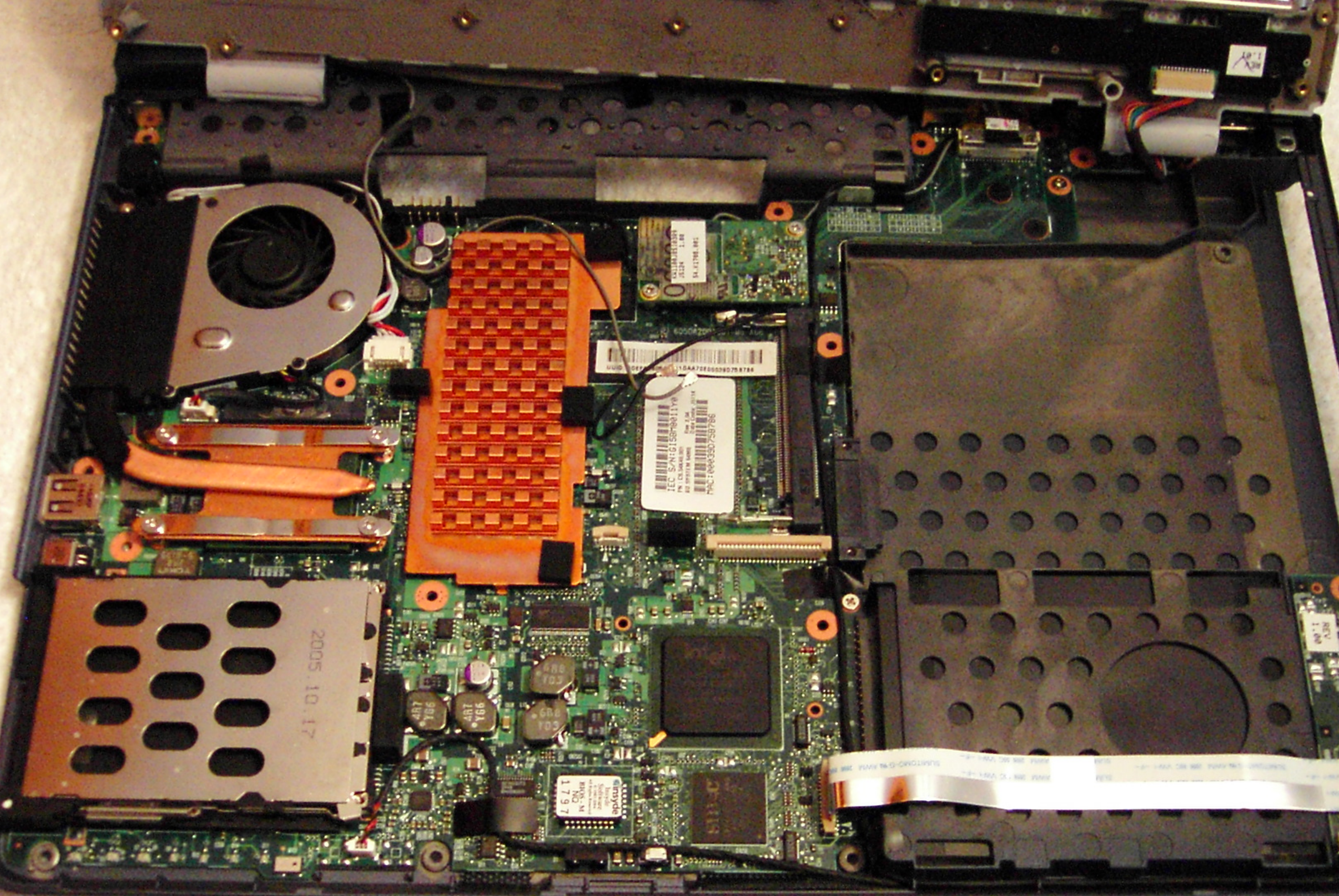
6R8
Y03

6R8
Y03

4R7
Y66

4R7
Y66





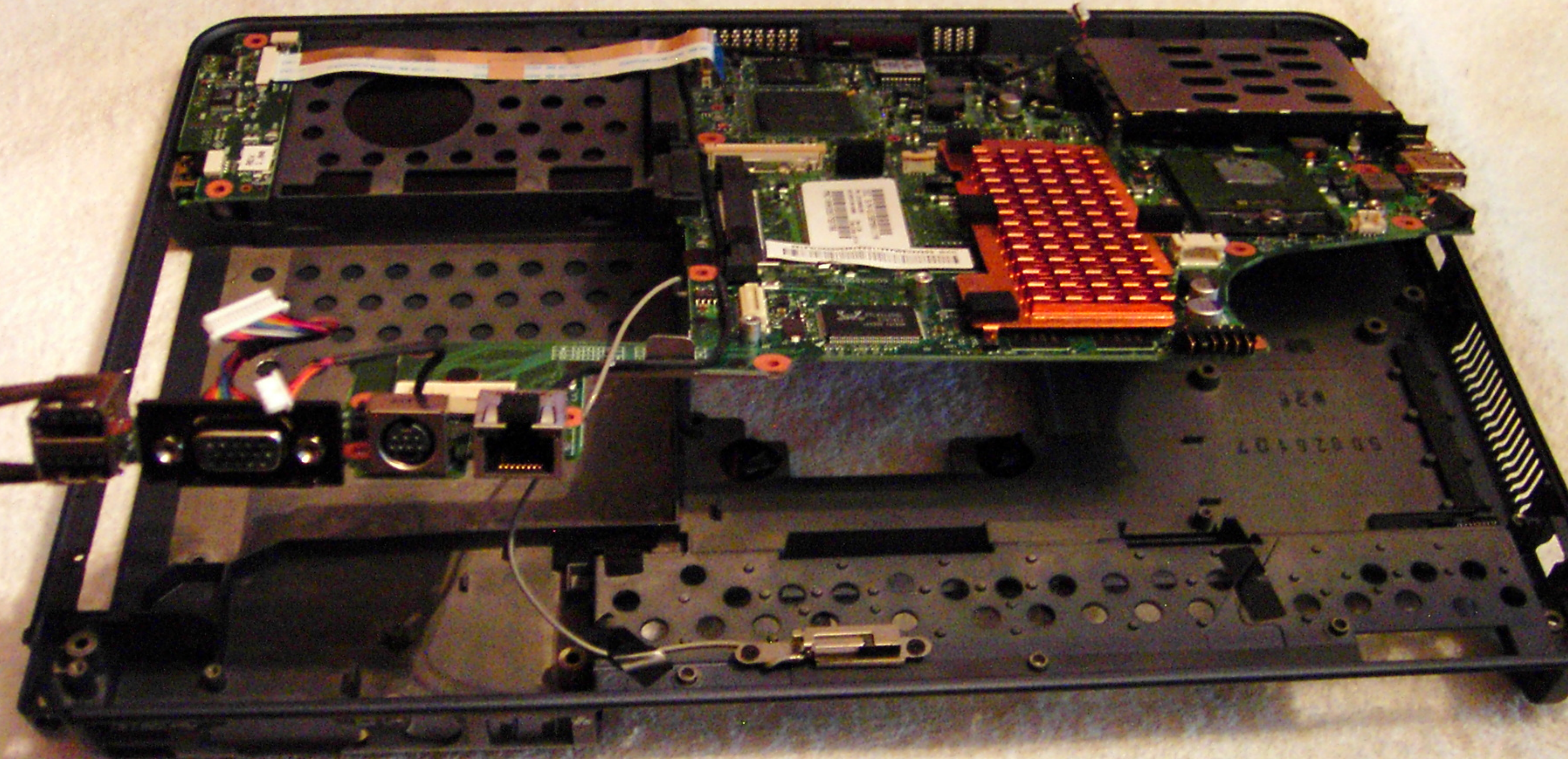
IEC S/N: C158R811V8
PN: C158R811V8
REV: 1.00
PAC: 0000350759796
Rev 2.0

2005.10.17

atsyde
REV: M
NO: 11797

REV: 1.00

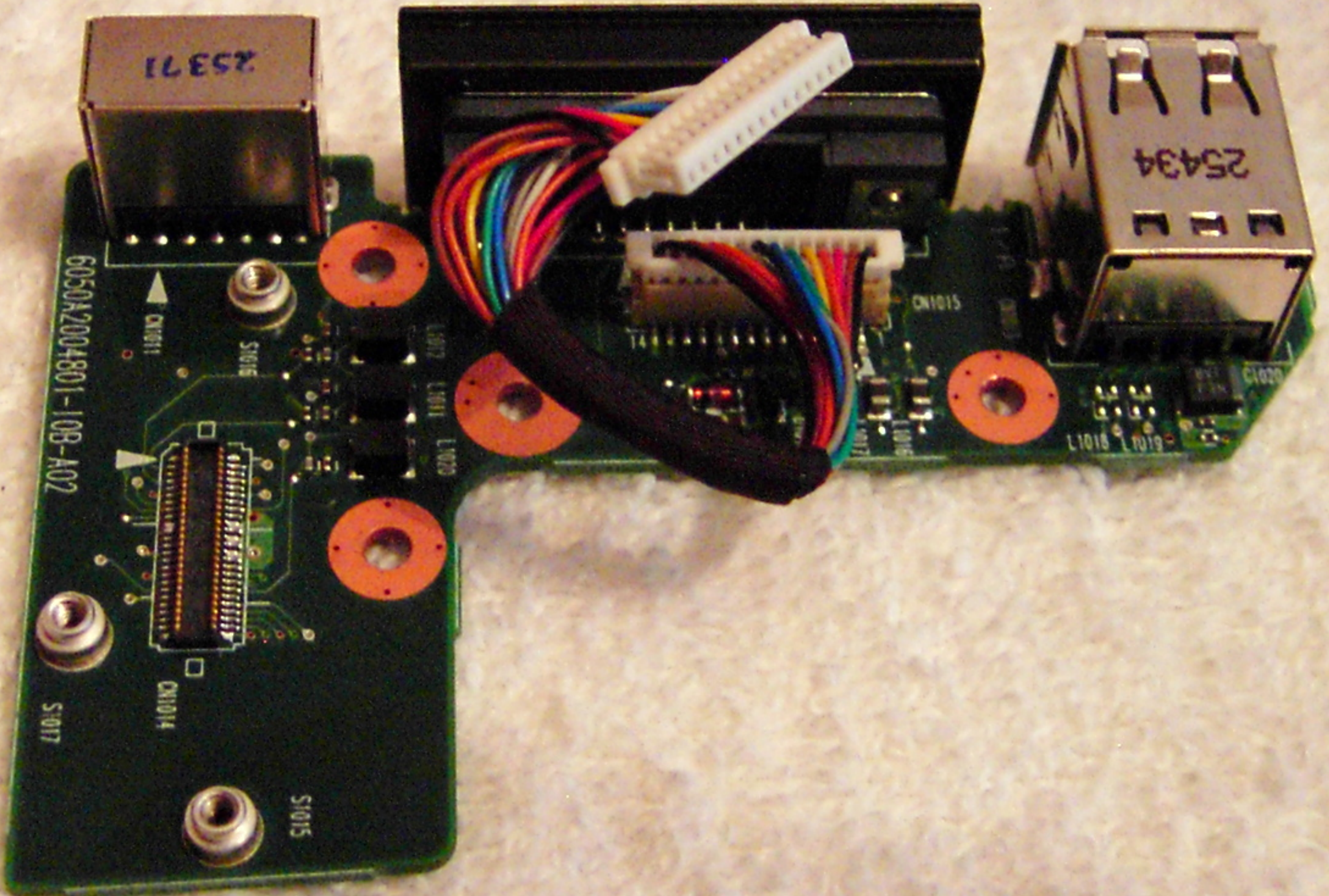
REV: 1.00





4) Remove 2 screws as indicated then carefully separate VGA I/O board and Motherboard.





6050A2004801-10B-A02

CN1011

S1016

L1012 L1011 L1020

CN1015

L1016 L1017

L1018 L1019

CN1014

S1017

S1015

25371

25434

