

## Disassembly Procedure

*Please follow the information provided in this section to perform the complete disassembly procedure of the notebook. Be sure to use proper tools described before.*

**A**SUS A3000N Series Notebook consists of various modules. This chapter describes the procedures for the complete notebook disassembly. In addition, in between procedures, the detailed disassembly procedure of individual modules will be provided for your service needs.

The disassembly procedure consists of the following steps:

- Battery module
- HDD Module
- Memory Module
- Wireless LAN Module
- CPU Module
- ODD-Module
- Keyboard
- LCD Module
- Top Case Module
- Motherboard Module
- Bottom Case Module

---

BATTERY

---

---

BATTERY  
MODULE  
REMOVAL

---

## Battery module

The illustration below shows how to remove the battery module.

### Removing Battery Module

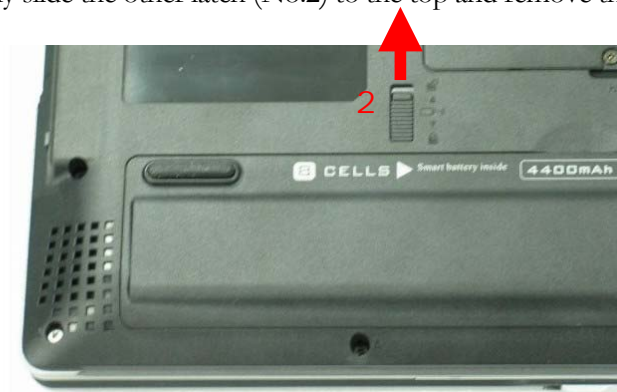
1. Turn over the notebook.



2. Slide the battery latch (No.1) to unlock.



3. Firmly slide the other latch (No.2) to the top and remove the battery.



---

HDD MODULE

---

## HDD Module

The illustrations below show how to remove the HDD module from the notebook.

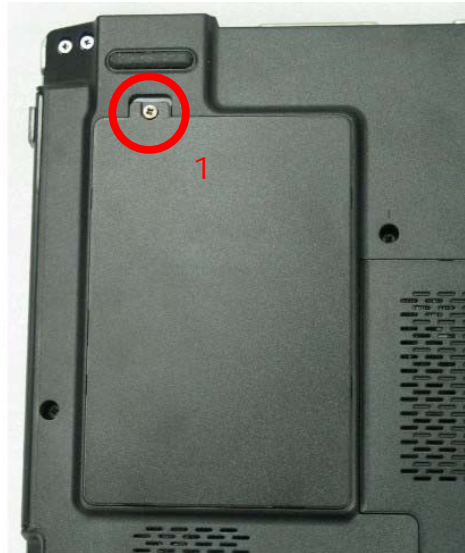
---

HDD MODULE  
REMOVAL

---

### Removing HDD Module

1. Release 1 screw (No.1) [M2\*4L, (K) B-NI, NY]] from the HDD cover.



2. Lift the HDD cover away.
3. Pull out the hard drive and lift the hard drive away by 2 hands.



DISASSEMBLY PROCEDURE

---

HDD MODULE  
DISASSEMBLY

---

Disassembling HDD Module

Remove 2 screws here (No.2, No.3) [M3 \* 3L (K) B-NI] and 2 screws (No.4, No.5) [M3 \* 3 L (K) B-NI] on the other side to separate HDD from HDD housing.



*\*Please do not touch inside of the HDD module.*

---

 MEMORY  
 MODULE
 

---

## Memory Module

The A3000N Series Notebook comes standard with one SO-DIMM in SO-DIMM socket. There is another expansion SO-DIMM socket for you to upgrade the total memory up to 1024MB with two 512MB SO-DIMM.

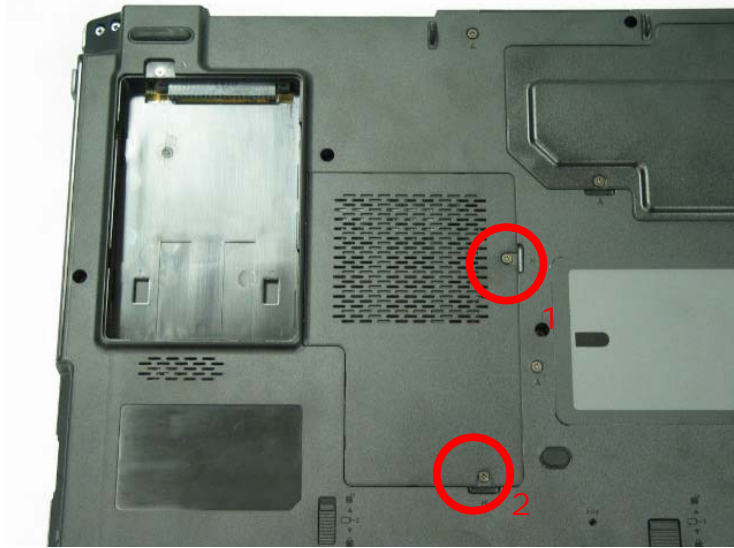
---

 MEMORY  
 REMOVAL
 

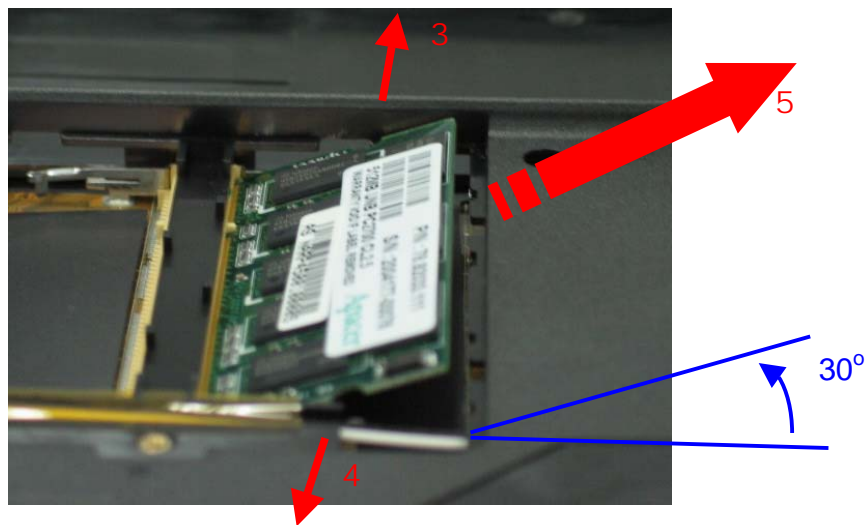
---

### Removing Memory module

1. Remove 2 screws on DDR Door (No.1, No.2) [M2\*3L(K, D3.4) W-NI NY]



2. Lift the DDR Door away
3. Open the 2 latches side (No. 3, 4), which will pop the memory module up to an angle of 30°, then pull out the memory module in that angle (No. 5).



---

WIRELESS  
LAN

---

## Wireless LAN Module

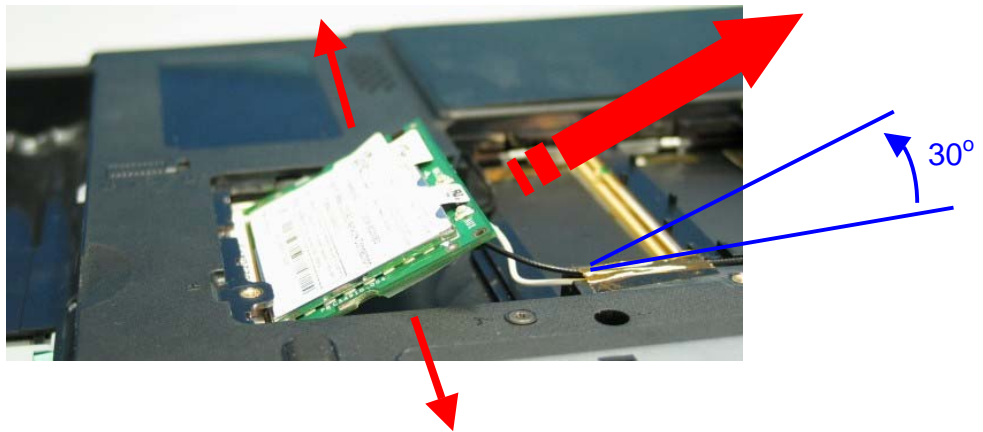
The illustration below shows how to remove the Wireless LAN module.

### Removing Wireless LAN module

1. Remove 2 Antenna cables from Wireless LAN Module. (No.1, No.2)  
(White cable: AUX, Black cable: MAIN)



2. Remove the Wireless LAN module by opening the 2 latches as side, which will pop the module up to an angle of 30°, then pull out the module in that angle just like memory module.



---

C P U

---

## CPU Module

The illustrations below show how to remove the CPU module from the notebook.

---

C P U  
R E M O V A L

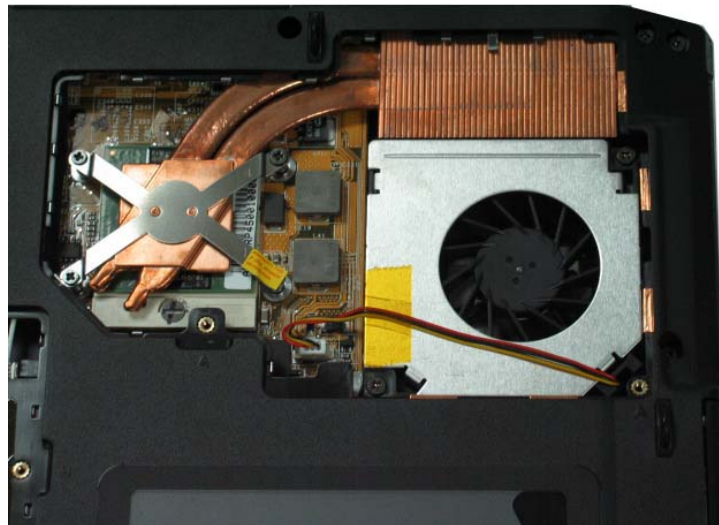
---

### Removing CPU

1. Remove 2 screws on the Thermal Door, (No.1, No.2) [M2\*4L, (K) B-NI, NY].



2. Lift the Thermal Door away.

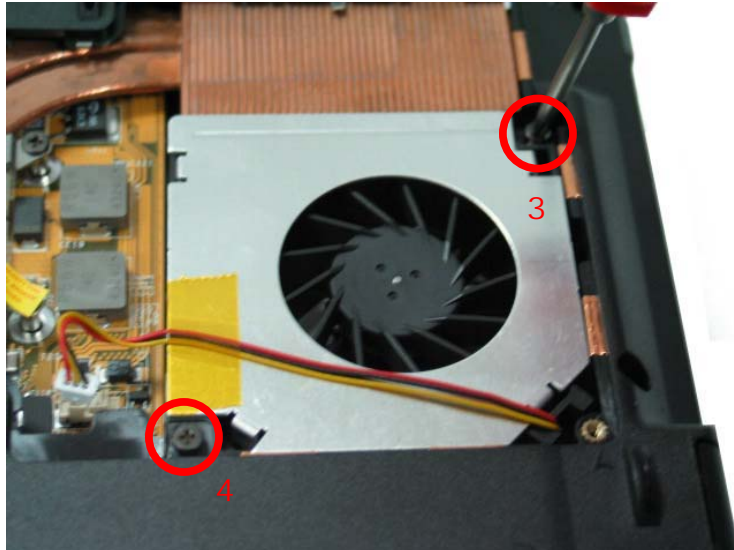


DISASSEMBLY PROCEDURE

3. Disconnect the cable on CPU module.



4. Remove the 2 screws aside the CPU fan (No.3, No.4) [M2 \* 6L (K, D4.6) (K) B-NI, NY].

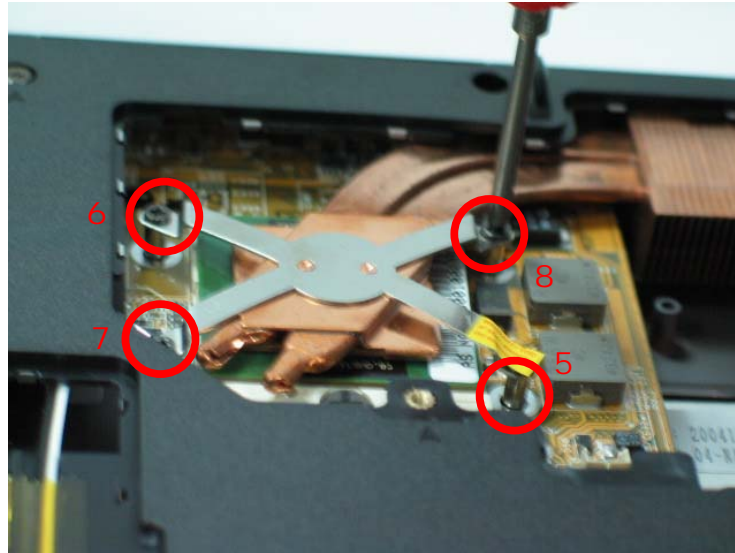


5. Lift the CPU FAN module away.



DISASSEMBLY PROCEDURE

6. Remove the 4 screws upon the CPU module (No.5 ~No.8) [M2 \* 6L (K, D4.6) (K) B-NI, NY].

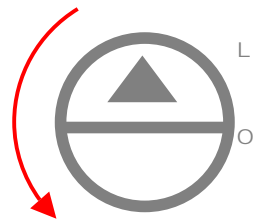


7. Take away the CPU heat sink module gently.



DISASSEMBLY PROCEDURE

8. Turn the non-removable screw here 180 degrees counter-clockwise to loosen the CPU.



Unlock

9. Squeeze the vacuum handling pump and use it to lift the CPU away.



\* Don't touch the die above the CPU.

---

ODD MODULE

---

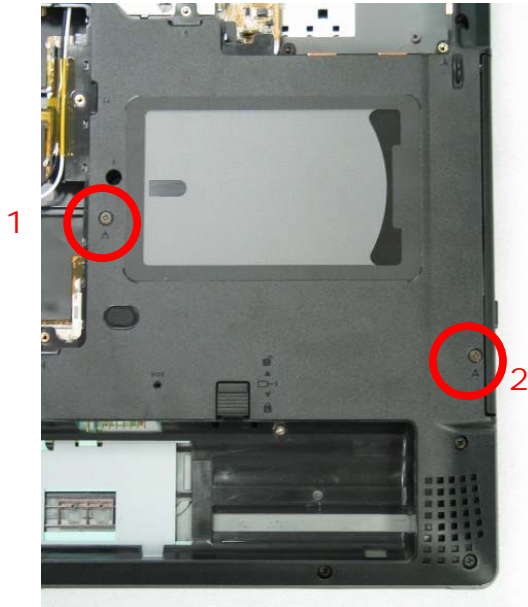
ODD  
REMOVAL

---

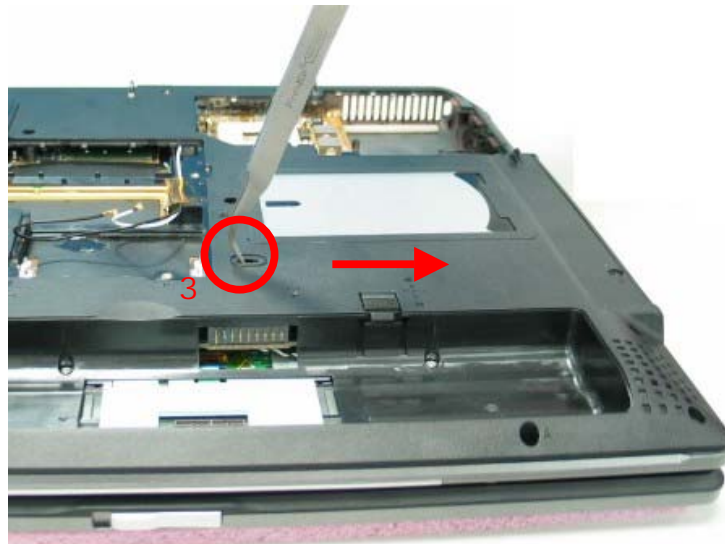
## ODD Module

The illustration below shows how to remove the ODD module.

1. Remove 2 screws from the cover (No.1, No.2) [M2 \* 4L (K) B-NI, NY].

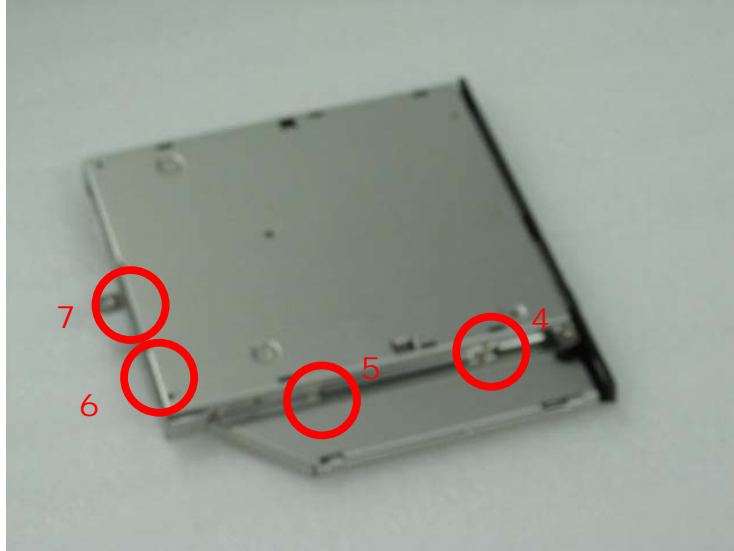


2. Put the screwdriver (No. 3) here and push the ODD drive out from the NB.



DISASSEMBLY PROCEDURE

3. Remove 4 screws (no.4-7) [M2 \* 2L (P) W-NI] from ODD bracket.



## Keyboard

The illustration below shows how to remove the keyboard

### Removing Keyboard

1. Remove 2 screws here (No.1, No.2) [M2 \* 6L (K, D4.6) (K) B-NI, NY]

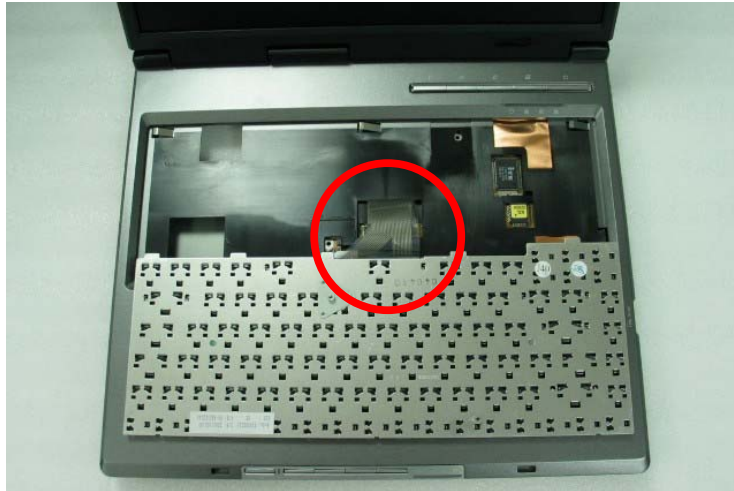


2. Turn over the NB and open the display panel.
3. Push the 3 latches in (No.1, No.2, No.3) with a pair of tweezers or a single-slotted screwdriver and lift the keyboard plate up.



## DISASSEMBLY PROCEDURE

4. Lay the keyboard down over the Touch Pad module. ***\*Do not remove the keyboard yet.*** The keyboard cable is still attached.



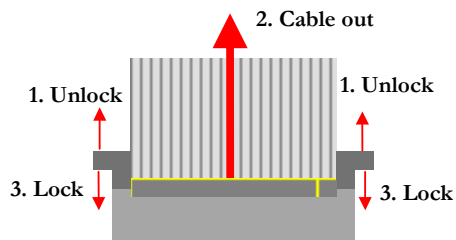
### Removing Keyboard Cable

---

CABLE  
REMOVAL

---

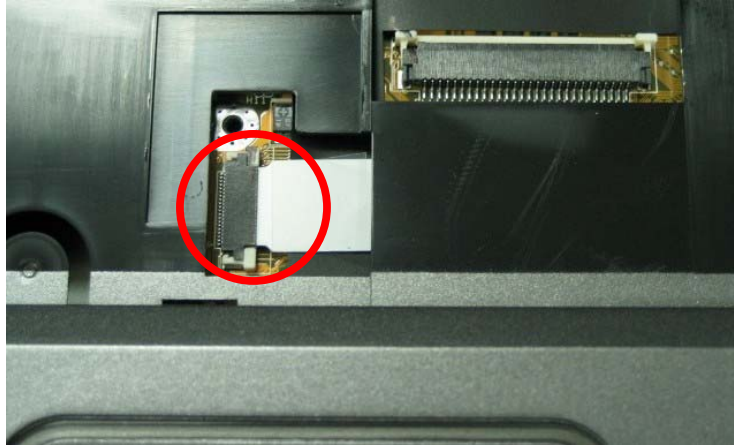
1. Use a flexible connector tool to unlock the cable connector on both ends (no. 1).
2. Carefully pull out the keyboard cable (no. 2) with a pair of tweezers.
3. Lock the connector (no. 3) again to avoid possible breakage.



4. Remove keyboard from the top case.

DISASSEMBLY PROCEDURE

5. Disconnect the connector of touch pad beneath keyboard.



LCD

## LCD Module

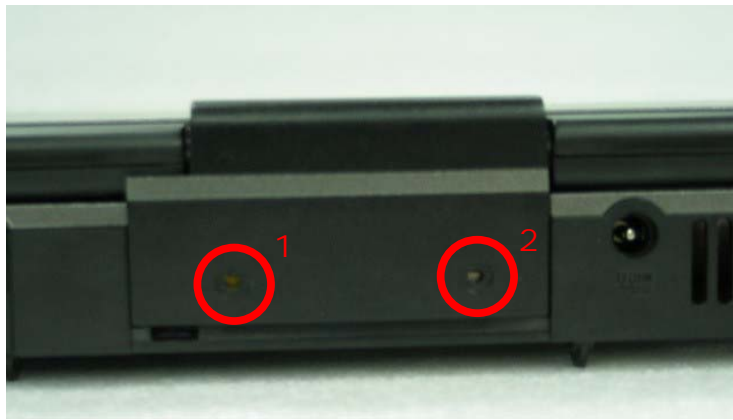
The illustrations below show how to remove and disassemble the LCD module. The module contains LCD panel, invert, LCD hinge bracket, hinge cover, LCD front cover and LCD bottom case. **Please do not disassemble the individual parts.**

LCD

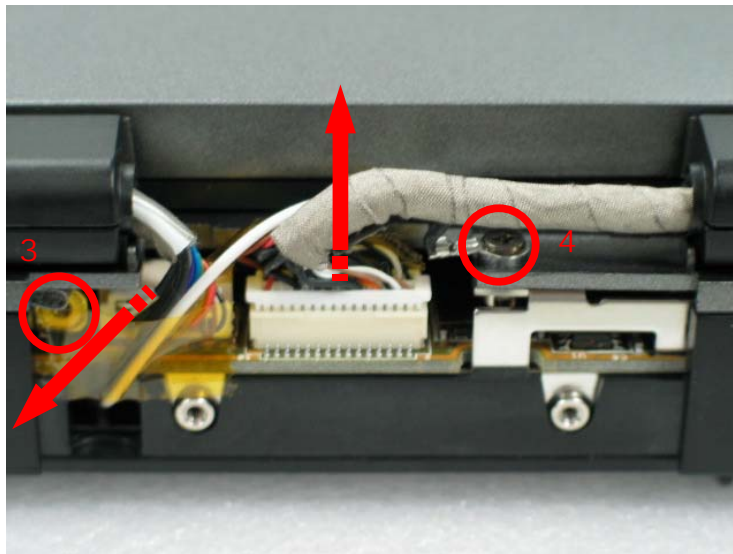
REMOVAL

### Removing LCD Module

1. Close the display panel.
2. Remove 2 screws on the harness cover (No.1, No.2). [M2 \* 4L(K) B-NI, NY]



3. Remove the harness cover.
4. Remove 2 screws here (No.3). [M2 \* 4L (K) B-NI, NY], (No.4). [M2 \* 6L (K, D4.6) (K) B-NI, NY]





DISASSEMBLY PROCEDURE

5. Disconnect the 2 connectors.
6. Open LCD, and remove 2 screws on both ends (No.1, No.2). [M2. \* 4L]



7. Remove 4 screws on both ends (No.3-6). [M2 \* 6L]



8. Remove the LCD module from system.



Disassembling LCD Module

1. Remove 5 rube and 5 screws (No.1 ~ No.5) [M2.5\*6L(K) (4.6) B-NI, NY] on the LCD bezel.

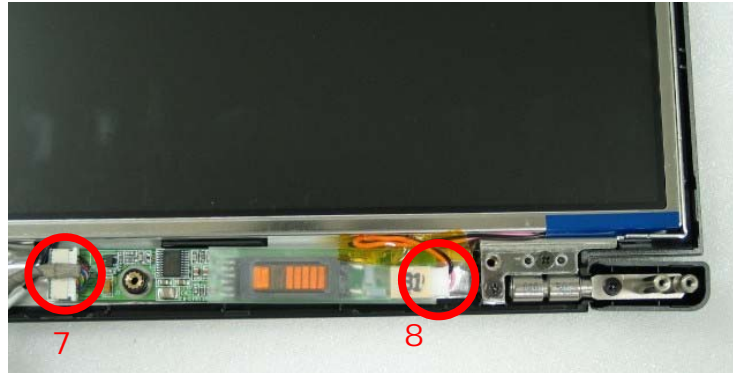


2. Carefully pry the inside edges of the LCD case open on all four edges with your fingers. Then, lift it away from the LCD module.

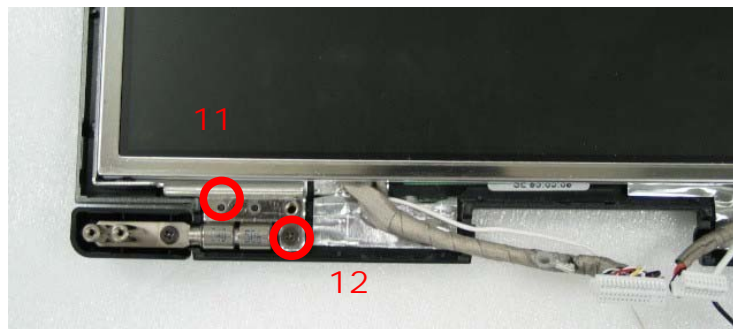
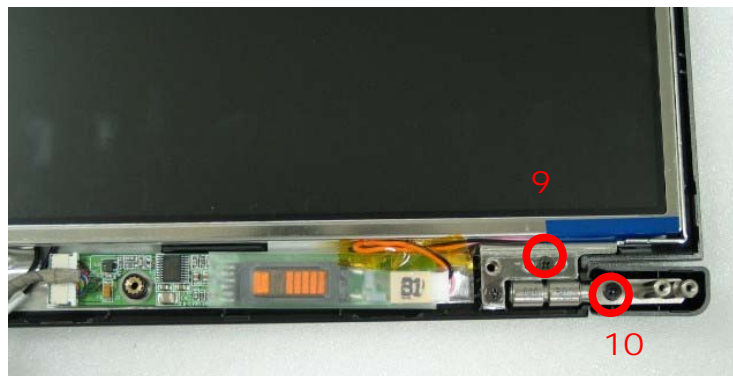


DISASSEMBLY PROCEDURE

3. Disconnect the 2 cables on inverter board. (No.7, No.8).

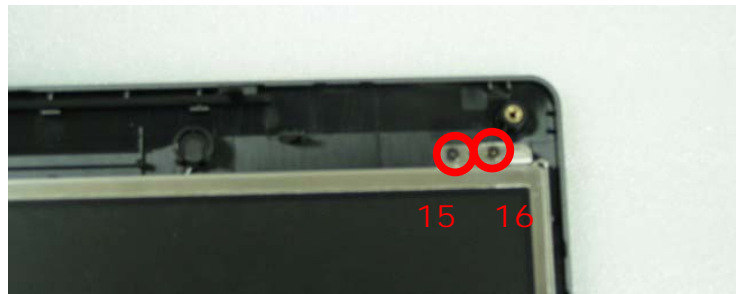
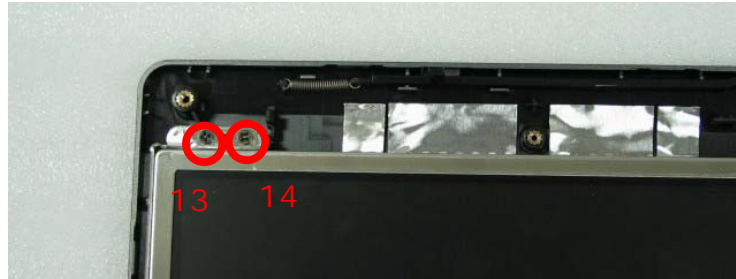


4. Remove 4 screws here (no.9-12) [M2.5\*6L(K) (4.6) B-NI, NY].



DISASSEMBLY PROCEDURE

5. Remove 4 screws (no.13-16) [M2\*3L(K) B-NI, NYLOK] to separate the LCD panel from the LCD back cover.

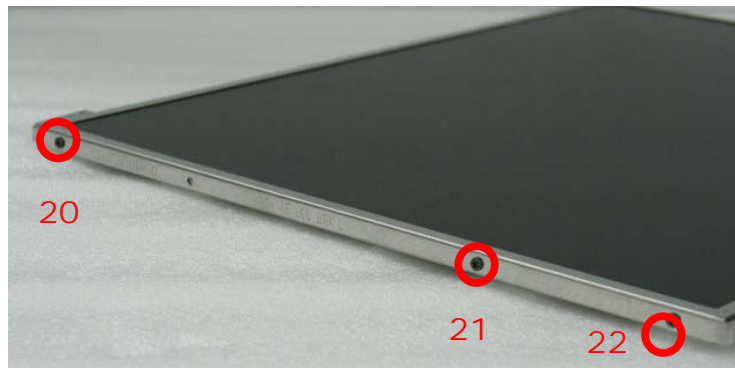
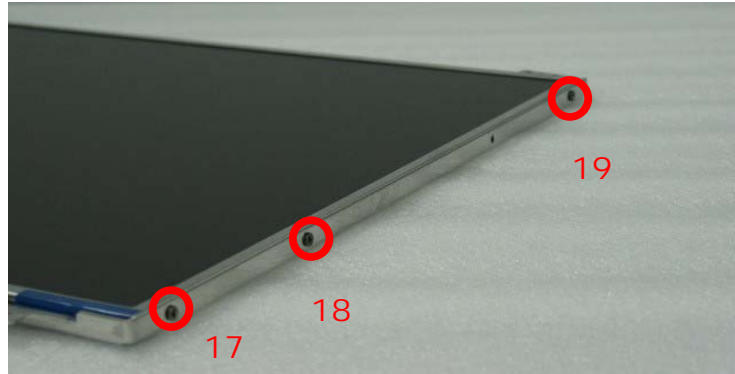


6. Remove the panel and the 2 hinge modules from the LCD back cover.

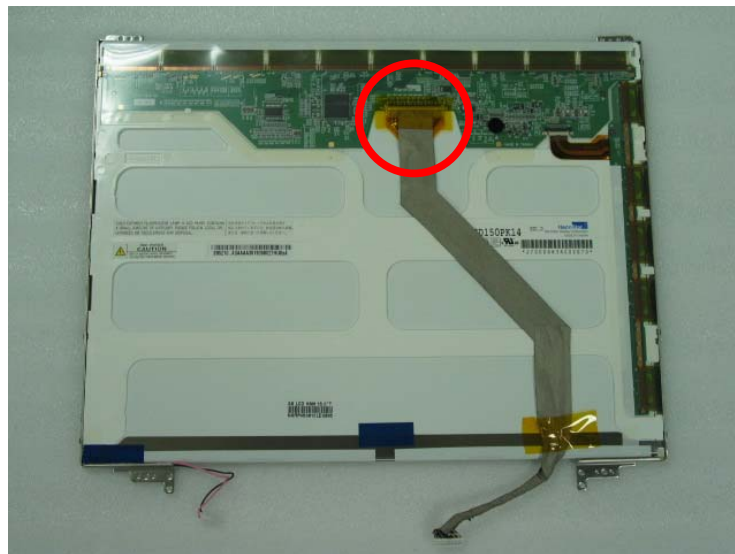


DISASSEMBLY PROCEDURE

7. Remove 6 screws (no.17-22) [M2\*3L(K) B-NI, NYLOK] on both sides to separate the LCD brackets from the panel.

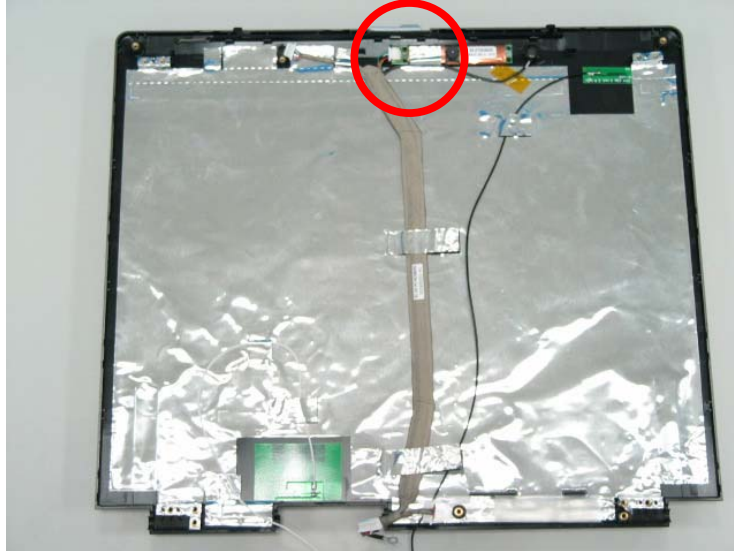


8. Disconnect the cable on the back of LCD panel.



DISASSEMBLY PROCEDURE

9. Tear of the tape and disconnect the cable from CCD module.

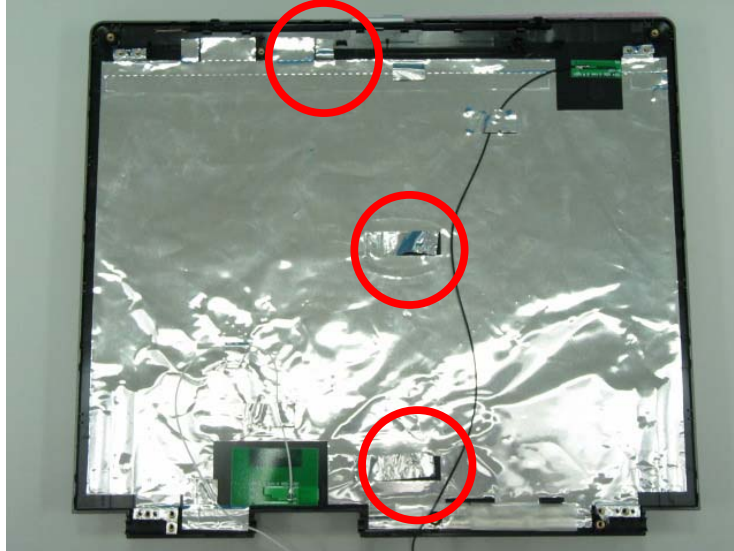


10. Remove CCD module.



DISASSEMBLY PROCEDURE

11. Tear the tape on aluminum foil and Remove the cable and microphone.



---

TOP CASE  
MODULE

---

## Top Case Module

The illustrations below show how to disassemble and remove the top case module of the notebook. The module contains the top case itself, touch pad module.

---

TOP CASE  
MODULE  
REMOVE

---

### Removing Top Case Module

1. Remove 2 screws (no.1, no.2) [M2\*4L(K) B-NI] at back side of notebook.



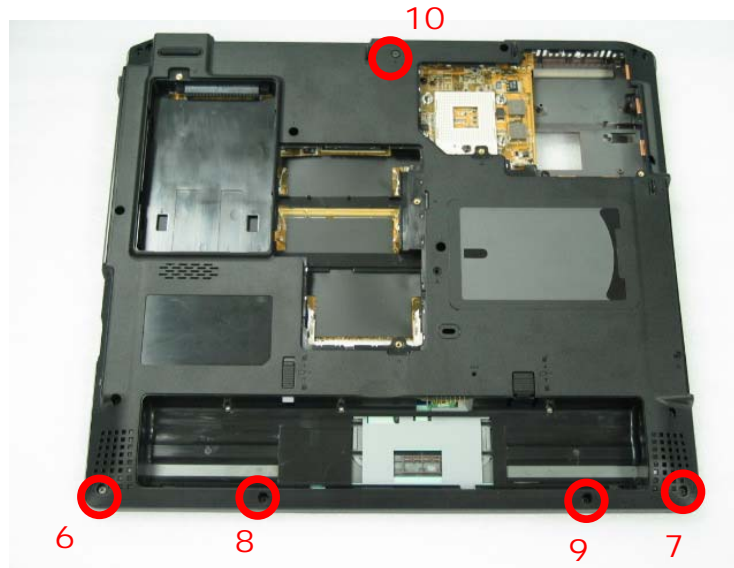
2. Remove 3 screws here (no.3-5) [M2\*3L]



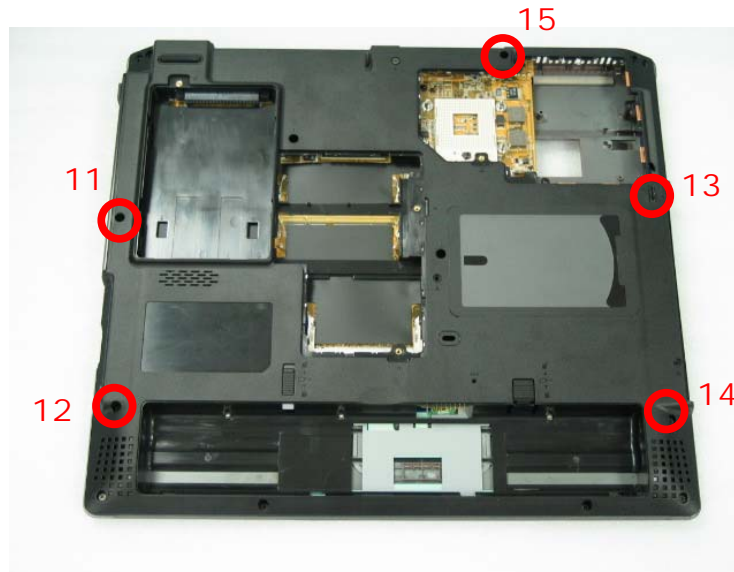


DISASSEMBLY PROCEDURE

3. Remove 5 screws here (no.6-10) [M2\*4L].



4. Remove 5 screws here (no.11-15) [M2\*6L]



DISASSEMBLY PROCEDURE

5. Lift it up to release the top case.



Removing Touch Pad Module

1. Remove 6 screws here (No.16-21) [M2 \* 3L]



2. Disconnect the FPC cable and then remove the touchpad module.

---

TOUCH PAD  
MODULE  
REMOVE

---

---

**MOTHERBOARD**

---

**Motherboard Module**

The illustrations below show how to disassemble and remove the motherboard module of the notebook. The module contains the motherboard itself, modem card module.

---

**MODEM CARD  
REMOVAL**

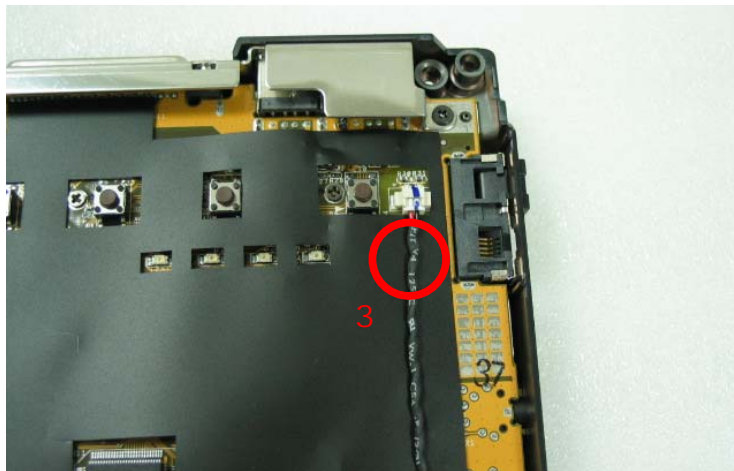
---

**Removing Modem card**

1. Remove 2 screws (no.1-2) (M2\*2.5L (K) W-NI) on the modem card.



2. Pull out the modem card from motherboard.
3. Remove the tape and disconnect the cables (no.3) from modem card and motherboard.

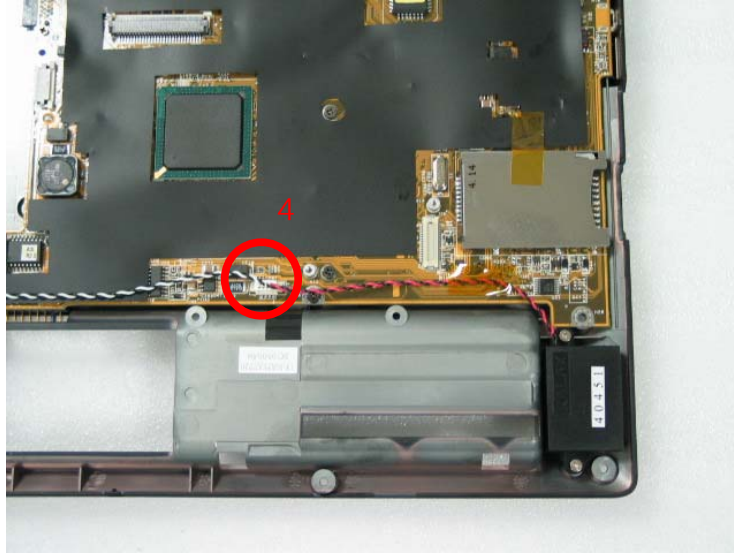


DISASSEMBLY PROCEDURE

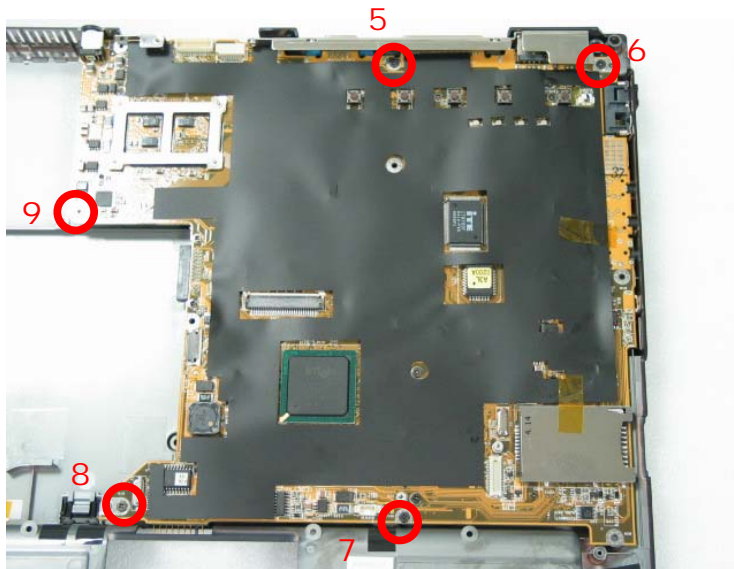
MOTHERBOARD  
REMOVAL

Removing Motherboard

1. Disconnect the connector of speaker (no.4) on motherboard.

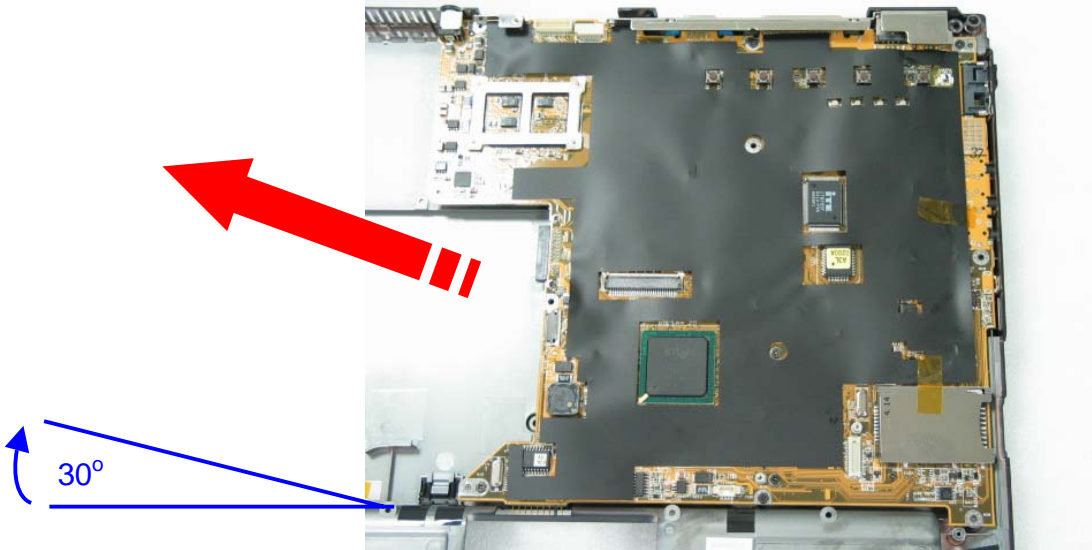


2. Remove 5 screws (no.5-9) (M2\*4L) on motherboard.



DISASSEMBLY PROCEDURE

3. Lift the motherboard up a little bit and push aside the bottom case, and then separate motherboard module from the bottom case at an angle of 20 degree.



---

BOTTOM  
CASE  
MODULE

---

SPEAKERS  
REMOVAL

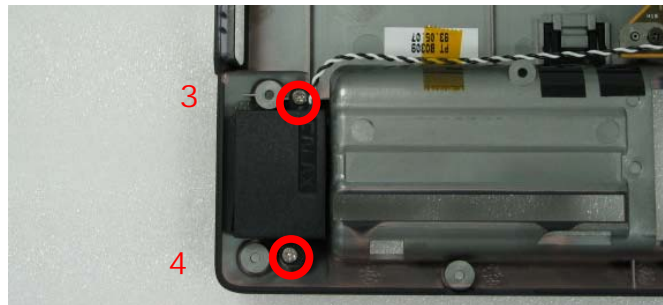
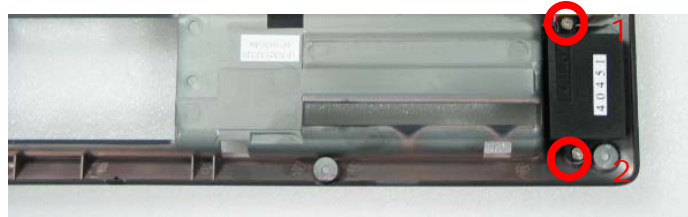
---

## Bottom Case Module

The illustrations below show how to disassemble and remove the bottom case module of the notebook. The module contains the bottom case itself and speakers.

### Removing Speakers

1. Remove the 4 screws (no.1-4) (M2\*3L) on both ends.



4. Lift up both speakers and speaker cable away from the bottom case.

