

Chapter 1. Disassembly & Assembly Guide

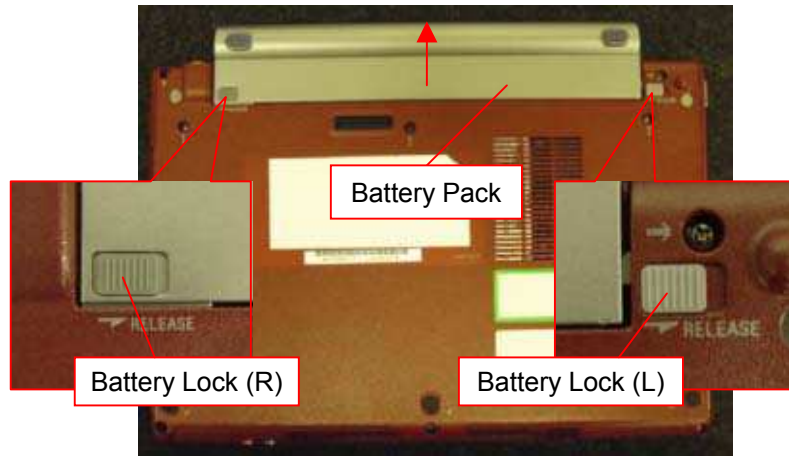
1-3. Disassembly & Assembly

- Main Section -

MS-1 Main Section Disassembly

Battery Pack

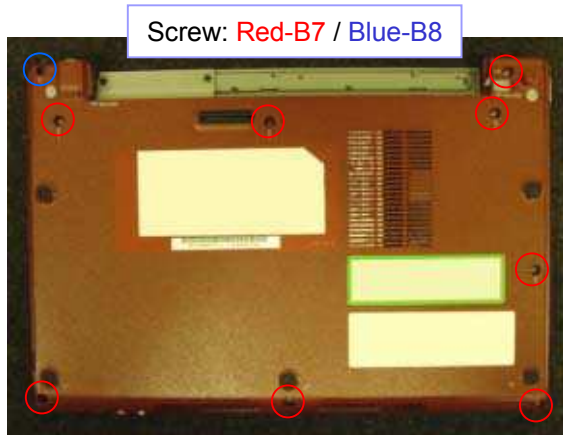
1)



Remove the Battery Pack while moving the Battery Lock (L) and the Battery Lock (R) to the **RELEASE** side.

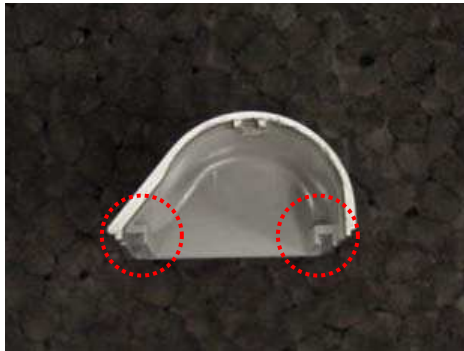
Cover (L), Cover (R)

1)



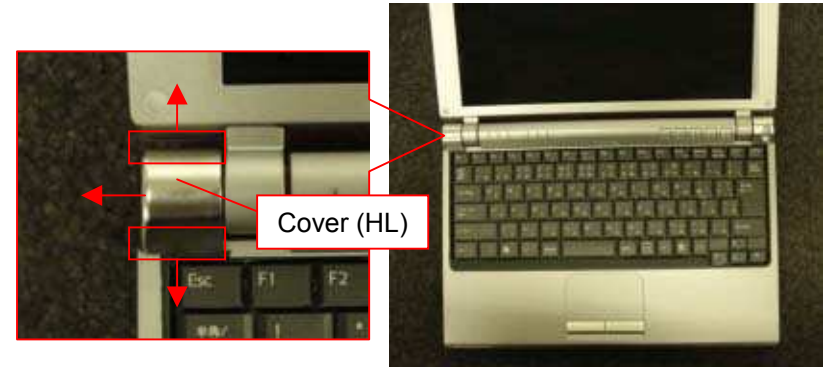
Remove the nine screws from the Bottom.

Remark



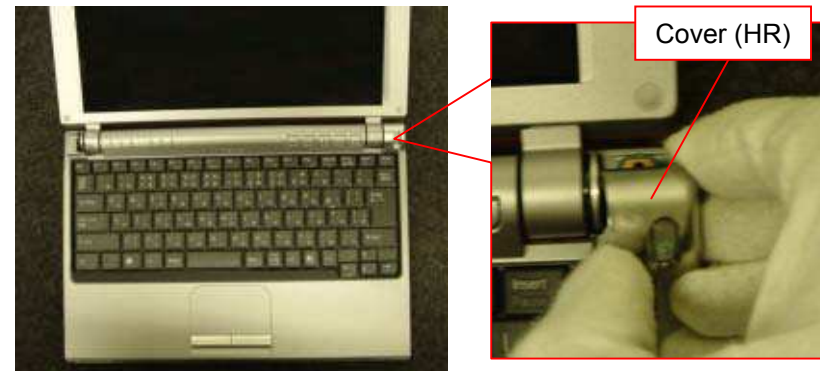
Position of the detent

2)



Remove the Cover (HL) in the direction of the arrow while outspreading its both sides and disengage the detent (two places).

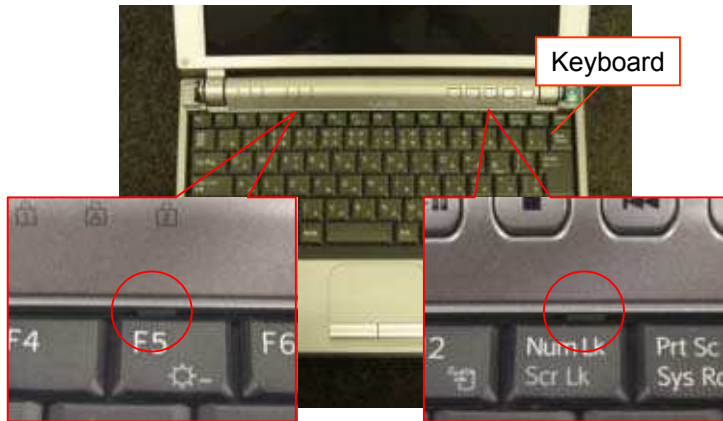
3)



Raise the Cover (HR) vertically, and remove it.

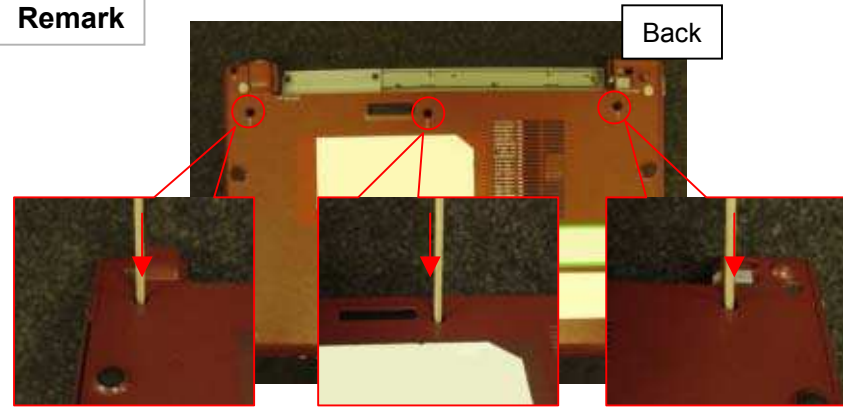
Keyboard -1

1)



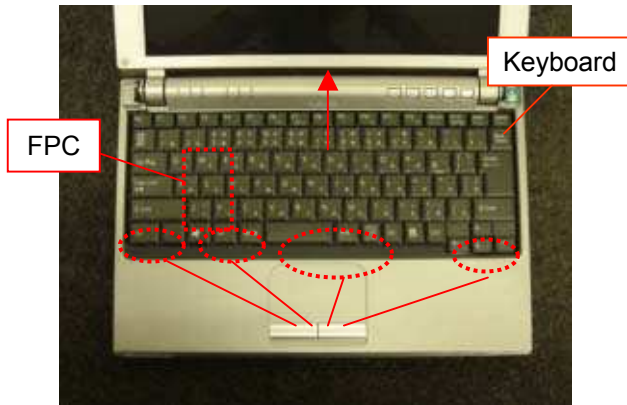
Disengage the detent (two places) and release the Keyboard.
**Push the detent with the bamboo spatula and disengage it.*

Remark



When the Keyboard can not be removed, insert the bamboo skewer from the back into the screw holes (three places) and release the keyboard.

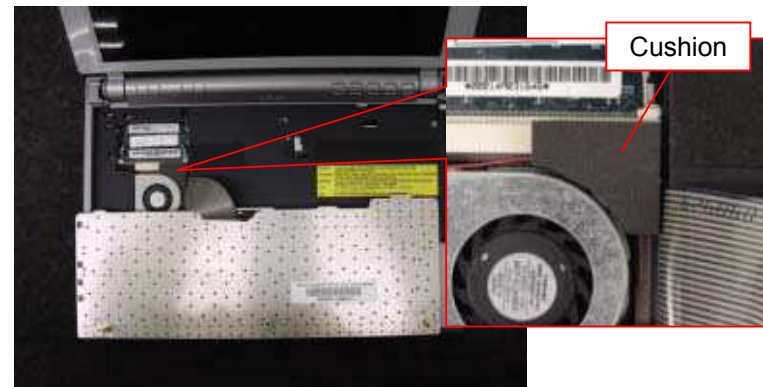
3)



Slide the Keyboard in the direction of the arrow, disengage the detent (four places) and turn down the front side.

**The FPC is connected to the rear.*

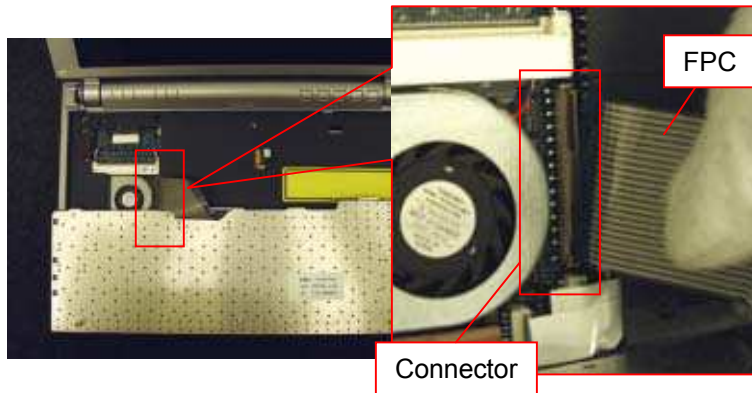
4)



Peel off the Cushion.

Keyboard -2

5)

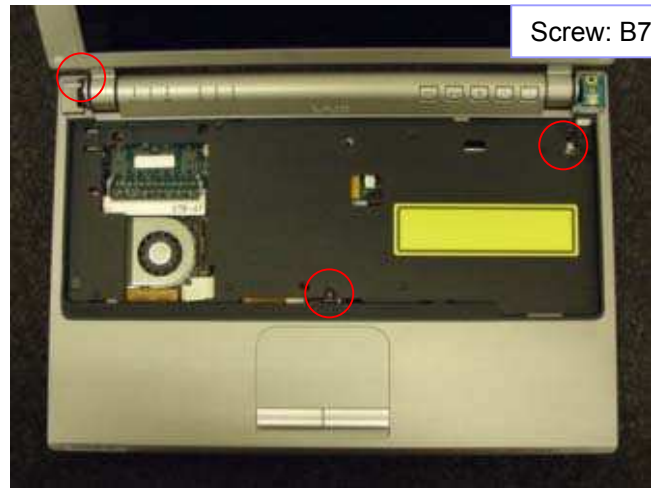


Disconnect the FPC.

**Raise the connector and release the lock.*

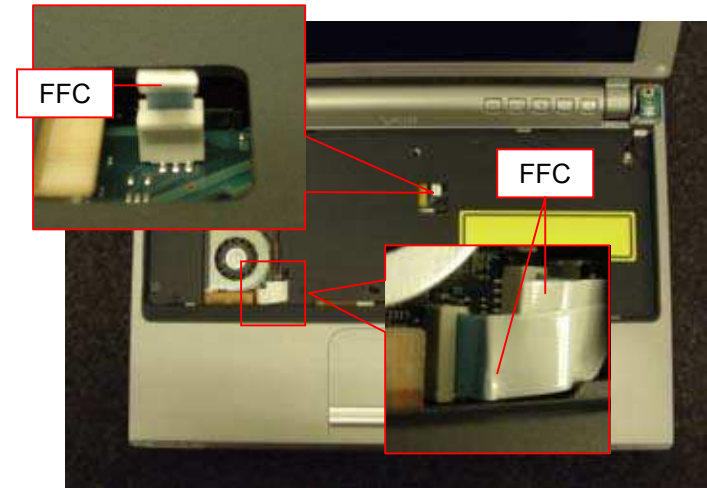
Palmrest -1

1)



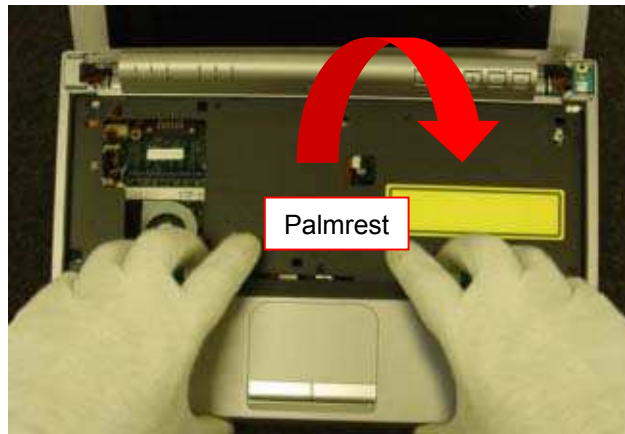
Remove the three screws.

2)



Pull out the FFC (three places) vertically.

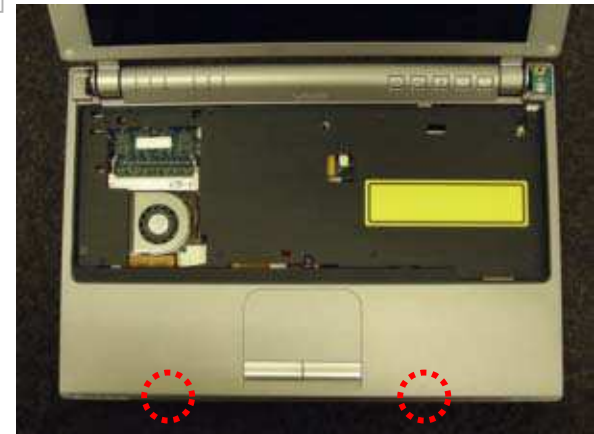
3)



Pull the Palmrest toward the front, and raise the Palmrest to the front side while disengaging the detent (two places).

**The detent is engaged toward the outside.*

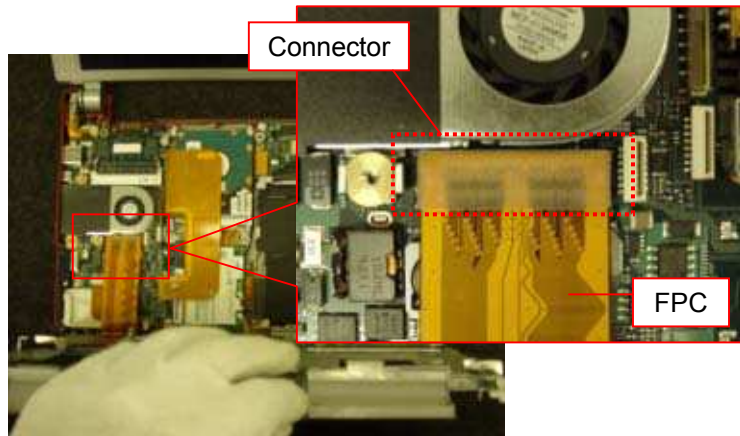
Remark



Position of the detent

Palmrest -2

5)



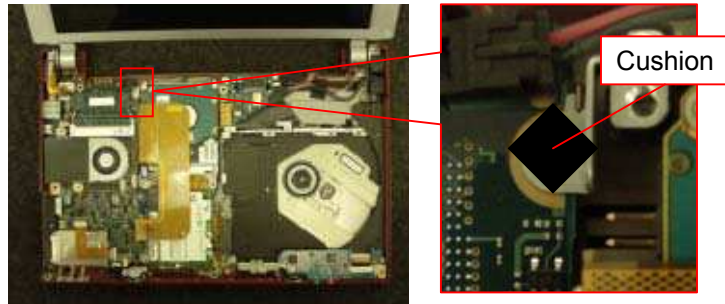
Disconnect the FPC.

*Disconnect the connector vertically.

HDD

Hi Type

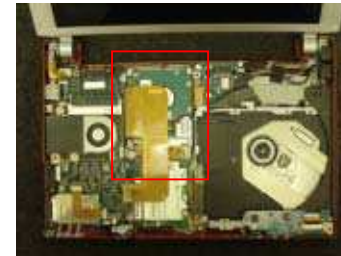
1)



Peel off the Cushion (one place).

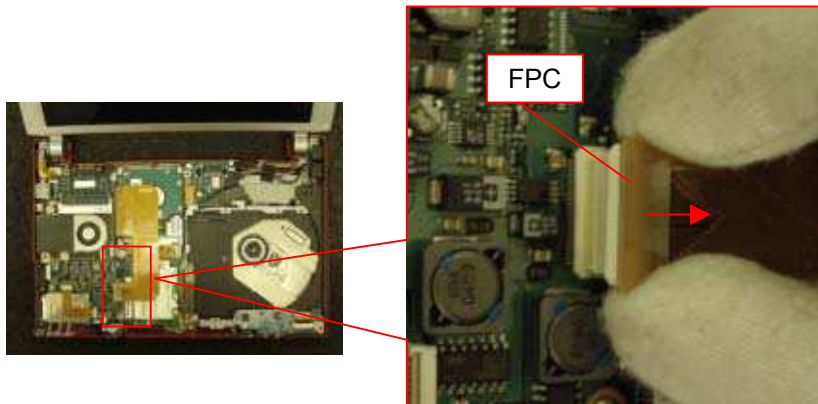
2)

Screw: B10

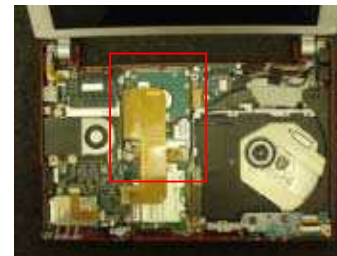


Remove the two screws.

3)



Disconnect the FPC.

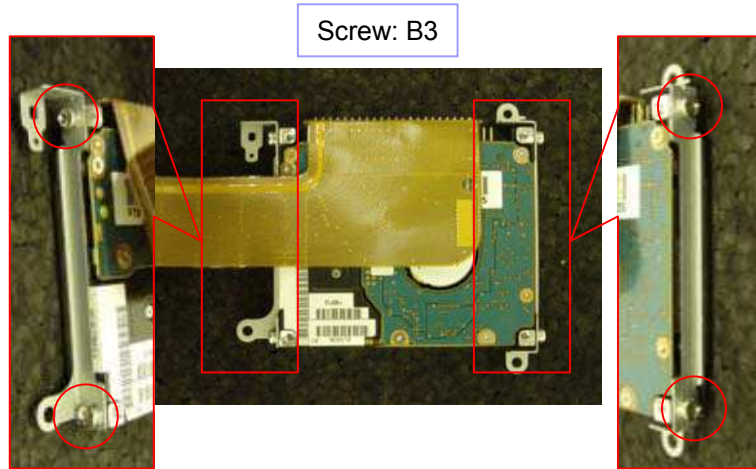


Remove the HDD.

Parts of the HDD

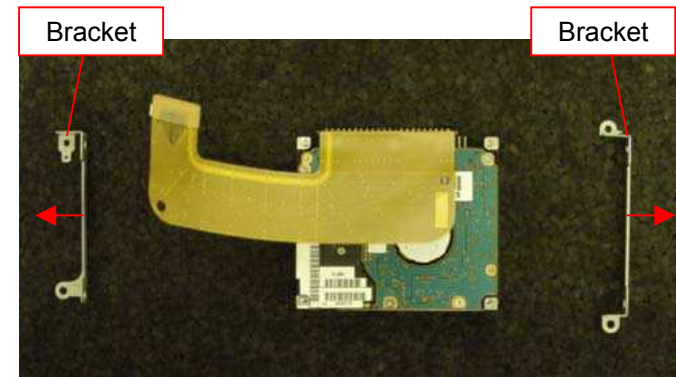
Hi Type

1)



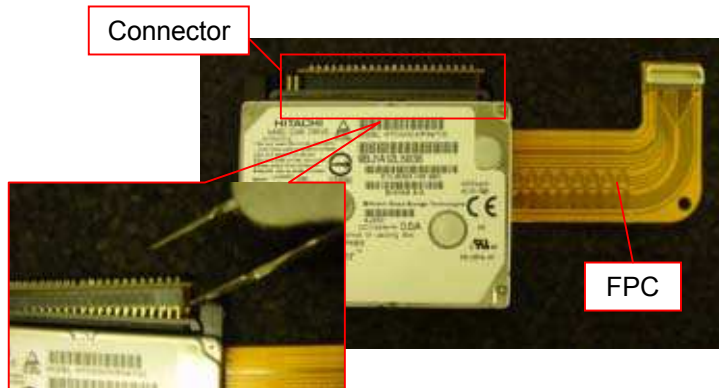
Remove the four screws.

2)



Remove the Bracket (two places).

3)



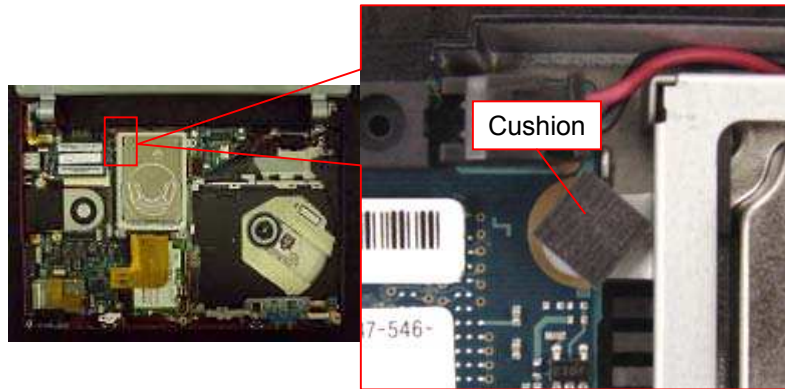
Disconnect the FPC.

Use the tweezers and disconnect the connector portion little by little.* Be careful not to bend the pins.*

HDD -1

To Type

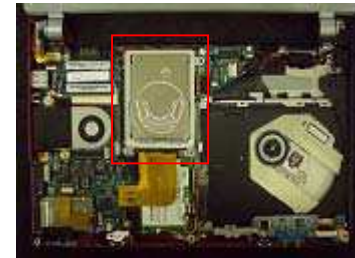
1)



Peel off the Cushion.

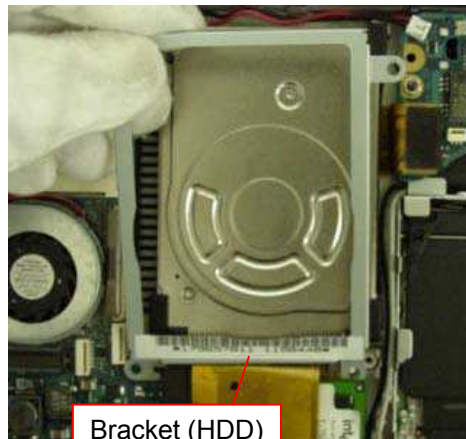
2)

Screw: B10



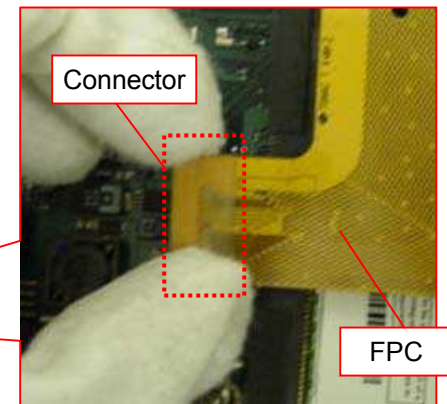
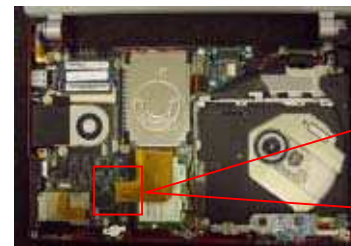
Remove the two screws.

3)



Remove the Bracket (HDD).

4)



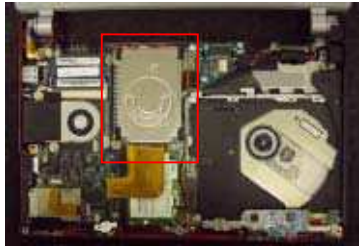
Disconnect the FPC.

*Hold the connector and disconnect it vertically.

HDD -2

To Type

5)

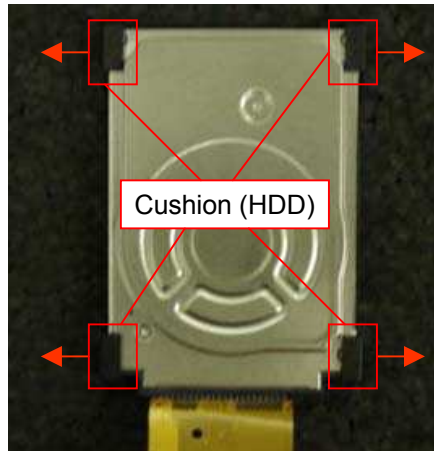


Remove the HDD.

Parts of the HDD

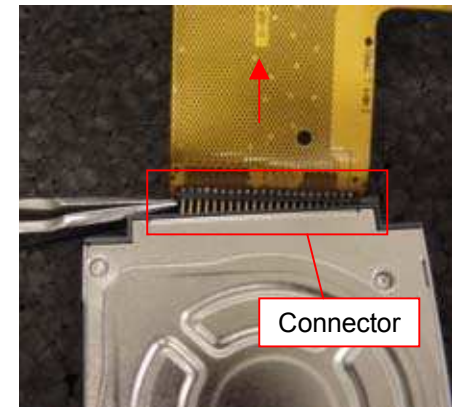
To Type

1)



Remove the Cushion (HDD) (four places).

2)



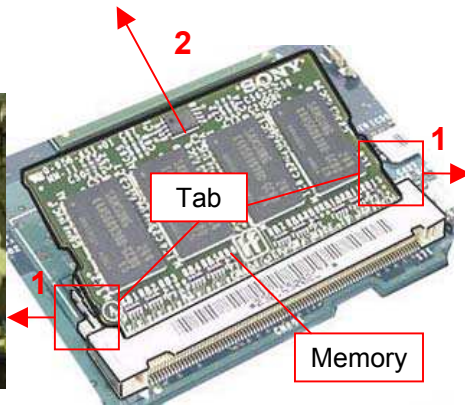
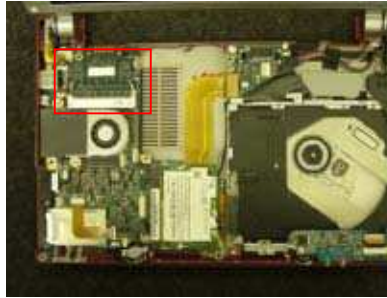
Disconnect the FPC.

*Use the tweezers and disconnect the connector portion little by little.

* Be careful not to bend the pins.

Memory

1)



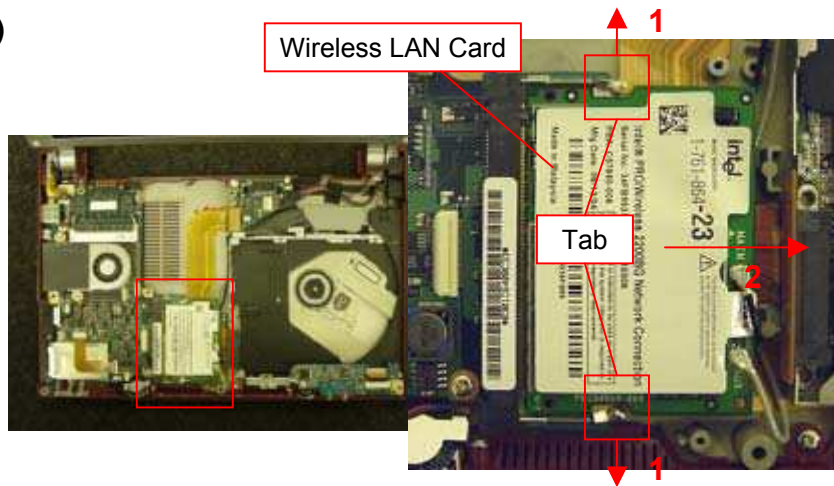
Outspread the tabs (arrow 1) and pull out the Memory obliquely upward (arrow 2).

Remark

Memory is installed only in the following these models.
1st --- T90S, T90PS, T160P, T170P

Wireless LAN Card

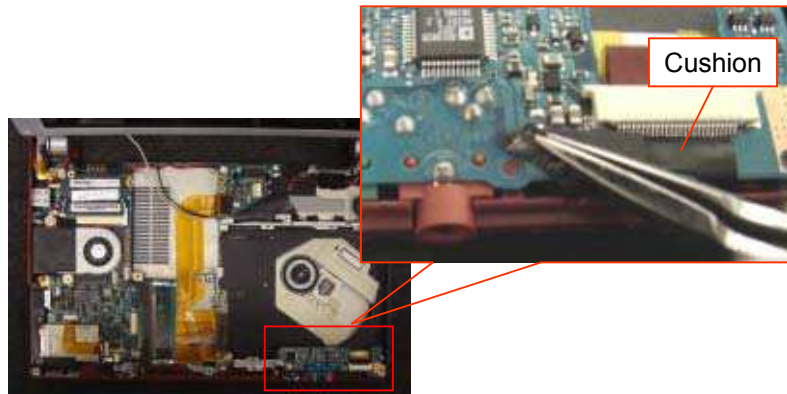
1)



Outspread the tabs (arrow 1), and pull out the Wireless LAN Card obliquely upward (in the direction of the arrow 2).

Optical Disc Drive, CNX-270 Board -1

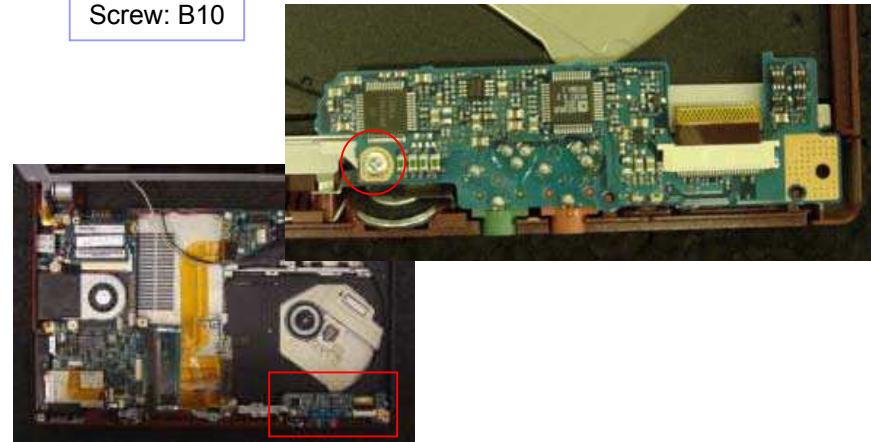
1)



Peel off the Cushion.

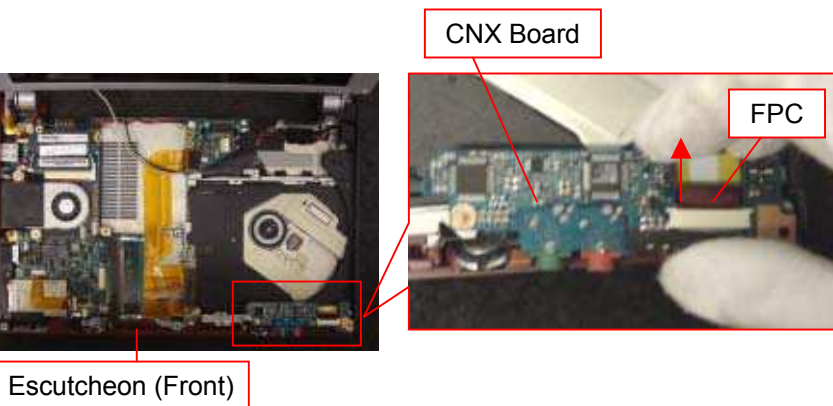
2)

Screw: B10



Remove the one screw.

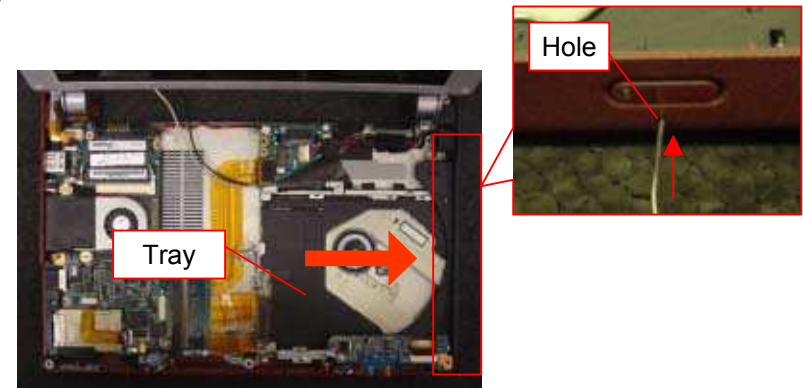
3)



Remove the CNX Board from the Escutcheon (Front) and disconnect the FPC.

*Pull out it in the direction of the arrow.

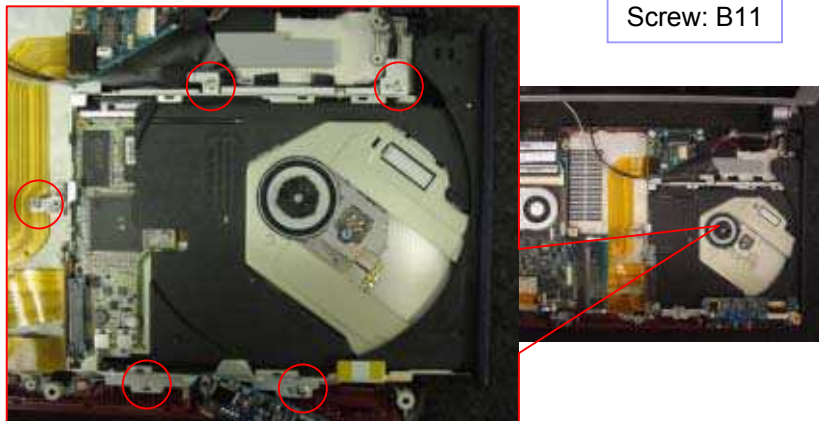
4)



Insert a thin tool into the hole of the Bezel and pull out the Tray.

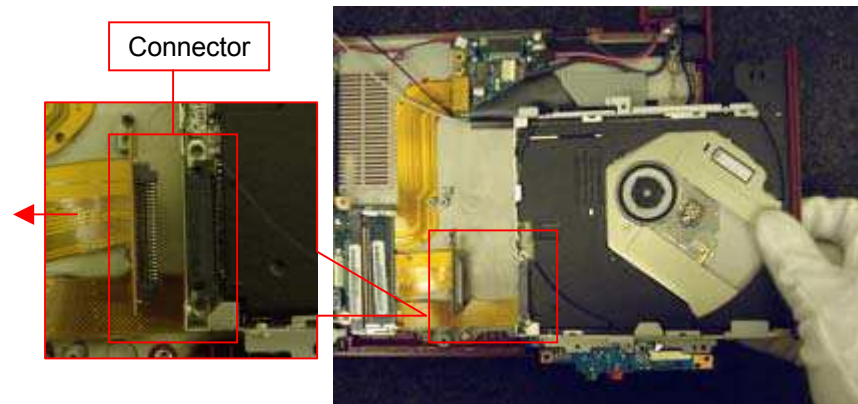
Optical Disc Drive, CNX-270 Board -2

5)



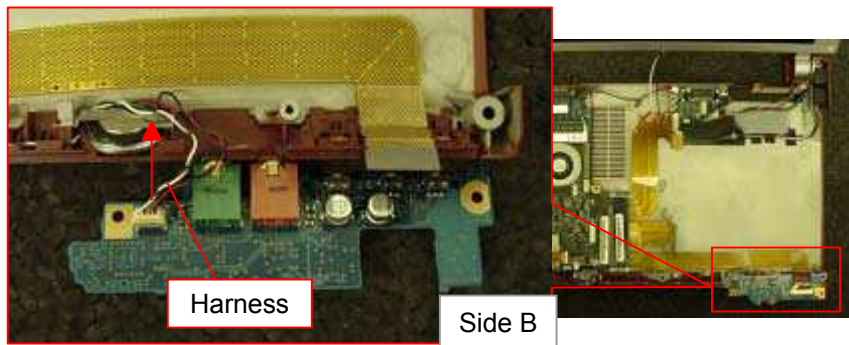
Remove the five screws.

6)



Disconnect the connector and remove the Optical Disc Drive.

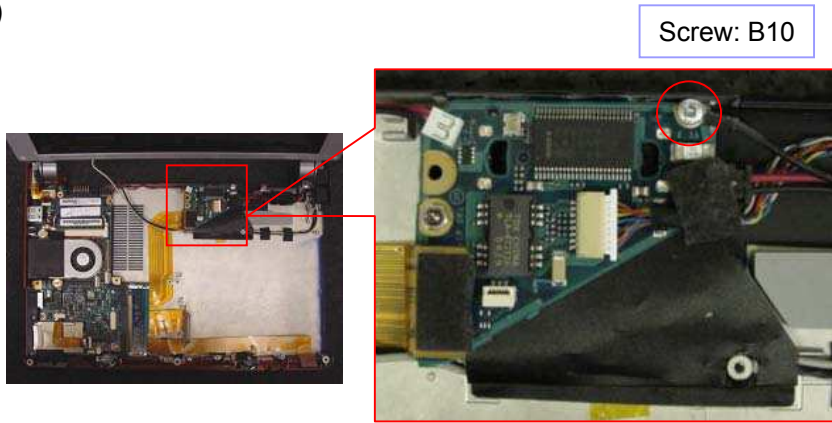
7)



Disconnect the Harness and remove the CNX Board.

CNX-273 Board -1

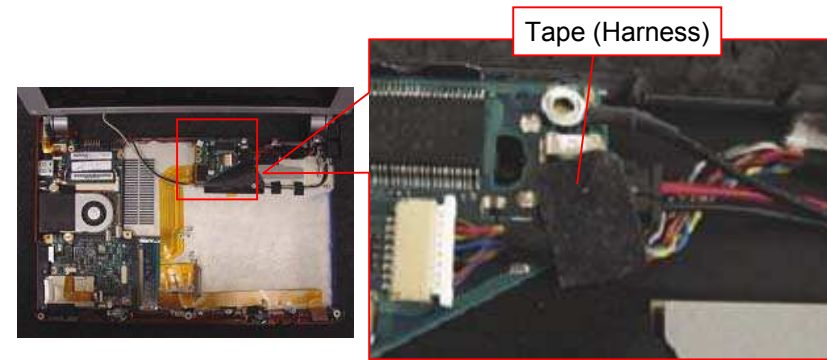
1)



Remove the one screw.

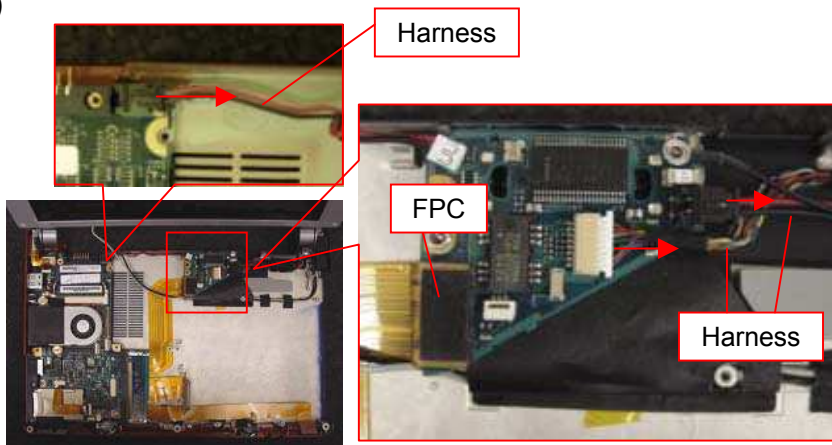
* The screw secures the CNX Board together with the lug terminal.

2)



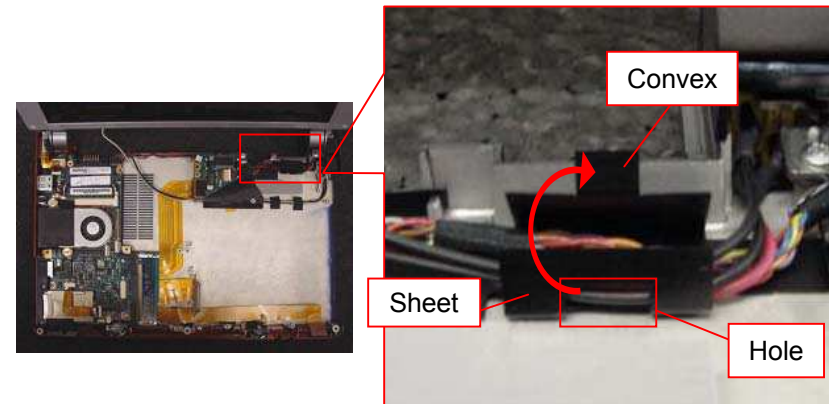
Peel off the Tape (Harness).

3)



Disconnect the Harness (three places) and the FPC (one place).

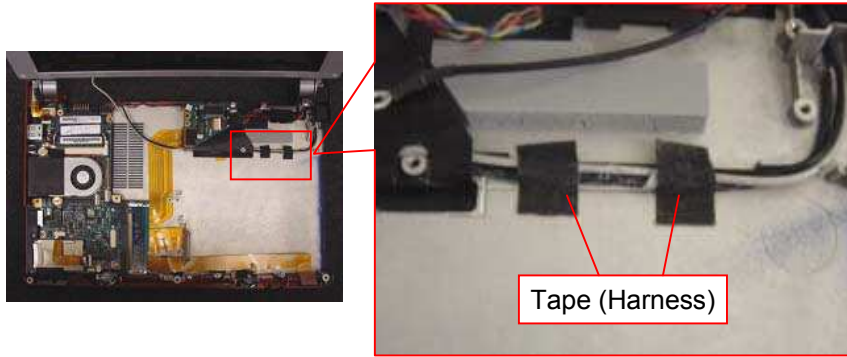
4)



Remove the convex portion of the Sheet from the hole.

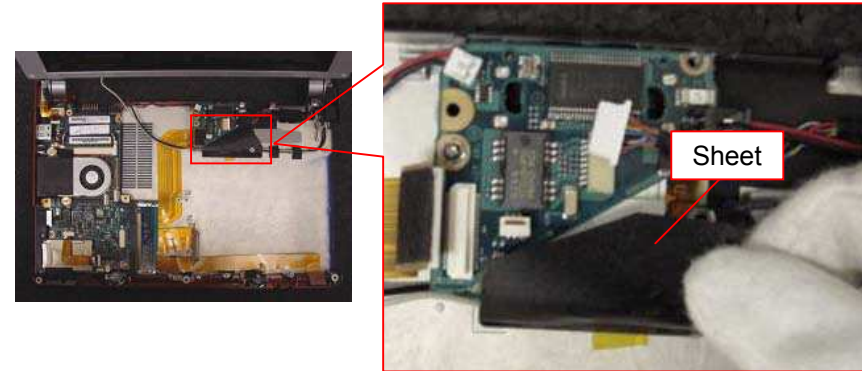
CNX-273 Board -2

5)



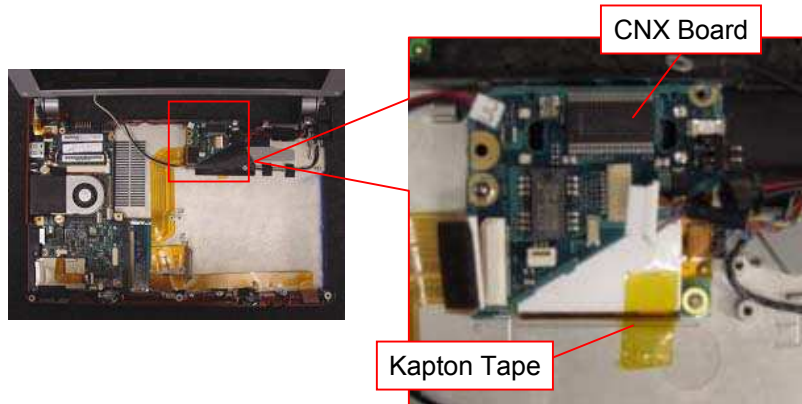
Peel off the Tape (Harness) (two places).

6)



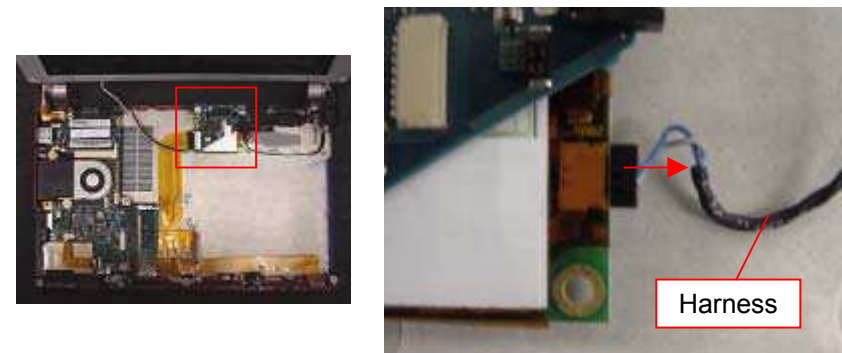
Peel off the Sheet.

7)



Peel off the Kapton Tape and remove the CNX Board.
*There is the Modem Card on the rear.

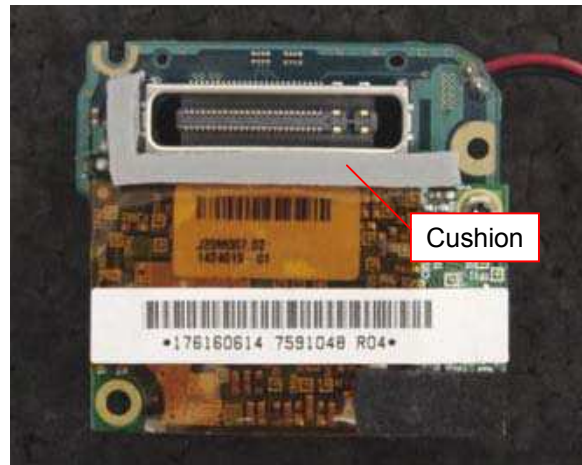
8)



Disconnect the Harness.

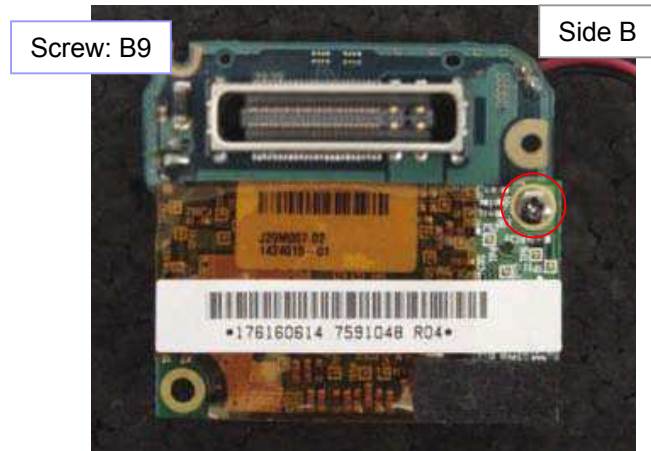
Modem Card -1

1)



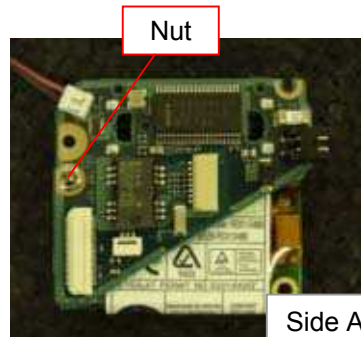
Remove the Cushion.

2)



Remove the one screw.

Remark

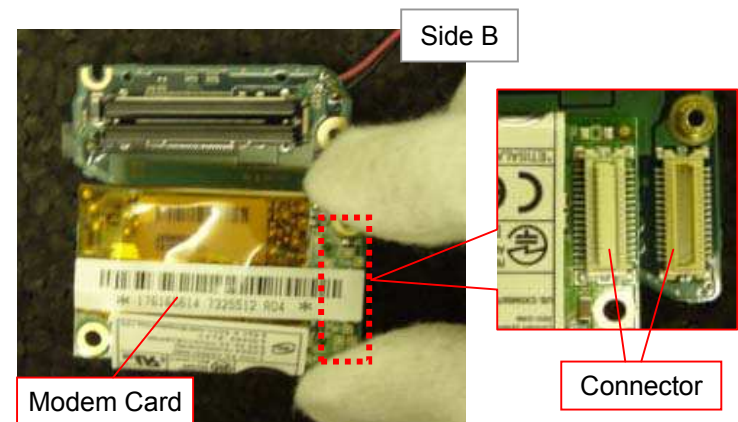


Side A



Remove the screw while securing the Nut of the side A with the 4 mm socket wrench.

3)



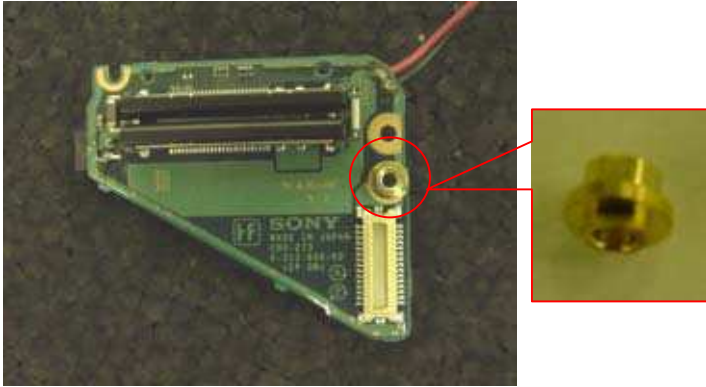
Modem Card

Connector

Disconnect the Modem Card.
*There is the connector on the rear.

Modem Card -2

Remark

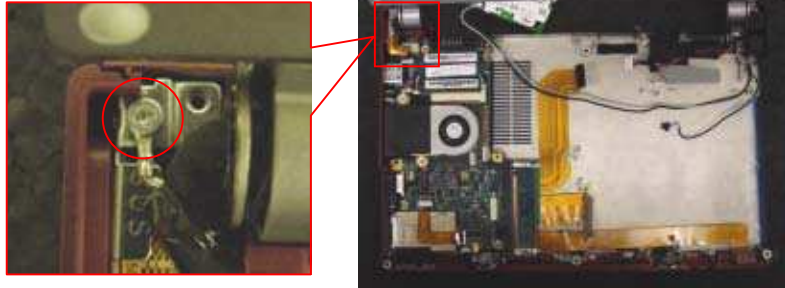


The Stand is installed under the Modem Card.

LCD Section -1

1)

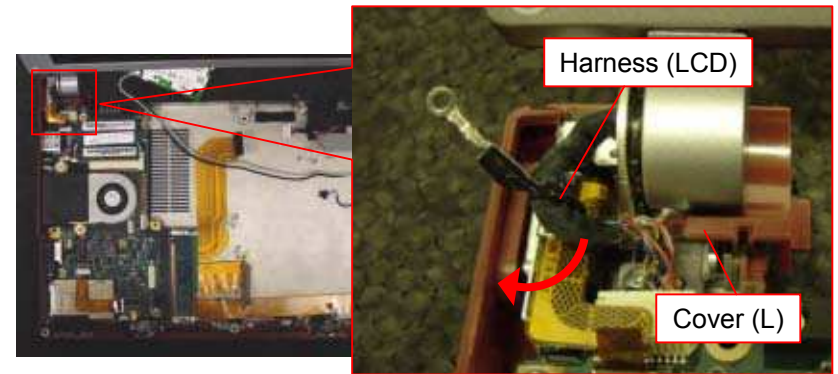
Screw: B6



Remove the one screw.

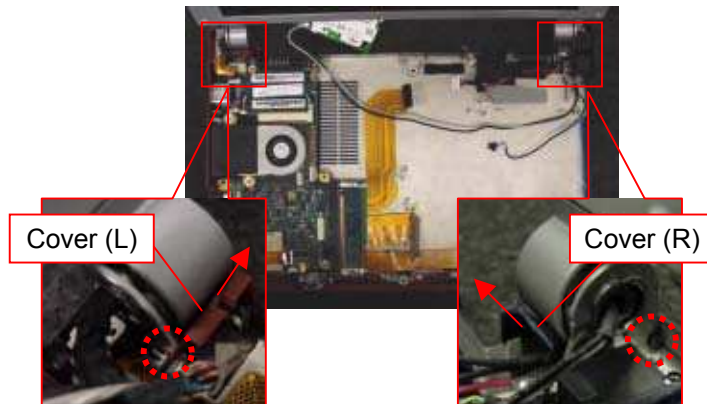
* The screw secures the lug terminal.

2)



Pull out the Harness (LCD) from under the Cover (L).

3)



Remove the Cover (L) and the Cover (R) in the direction of the arrow while disengaging the detent (each one place).

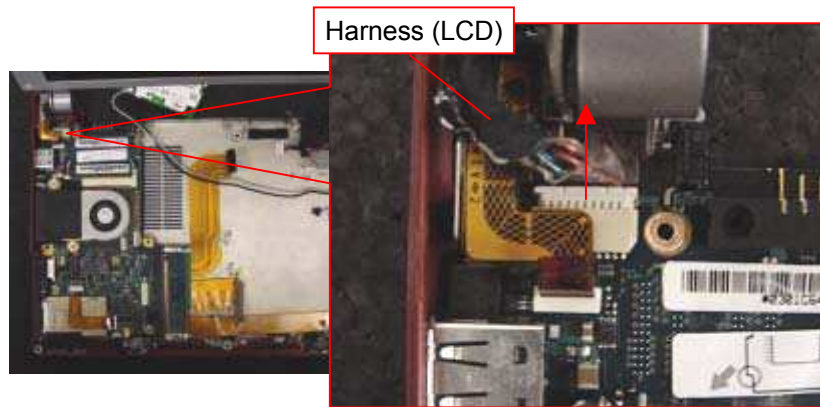
Remark



Position of the detent

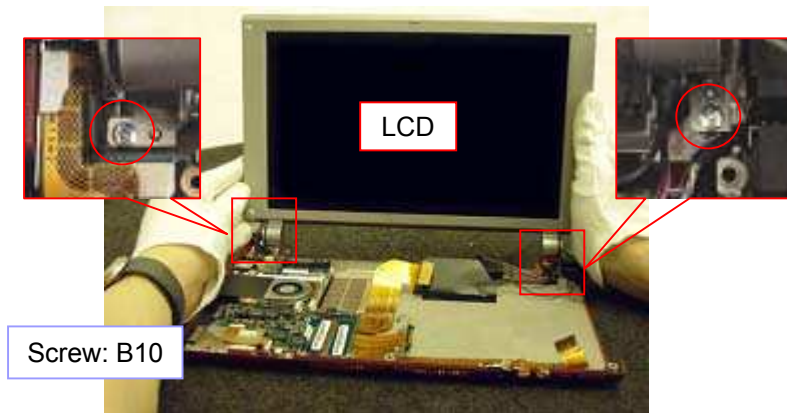
LCD Section -2

4)



Disconnect the Harness (LCD).

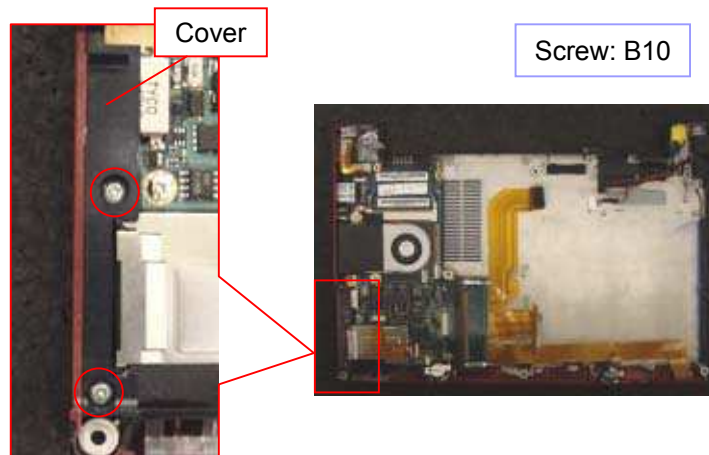
5)



Remove the two screws and the LCD.

Mother Board -1

1)



Remove the two screws and the Cover.

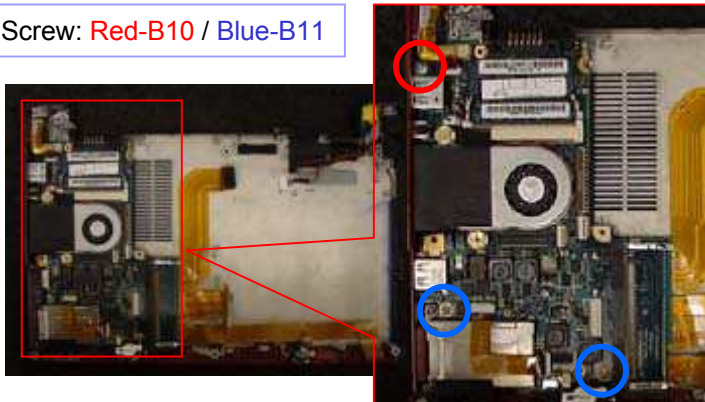
2)



Peel off the Cushion.

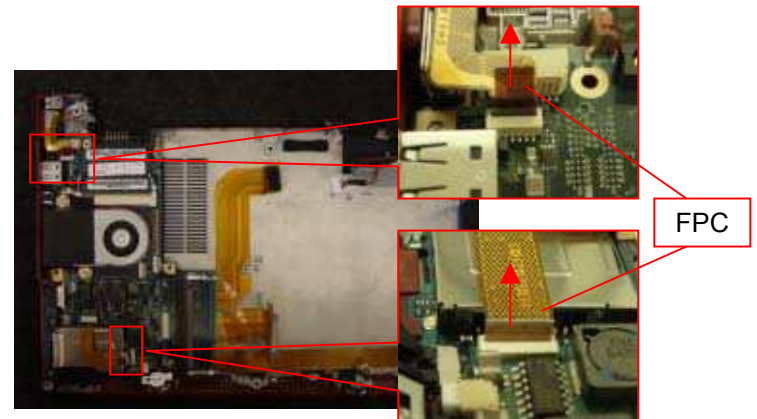
3)

Screw: Red-B10 / Blue-B11



Remove the three screws.

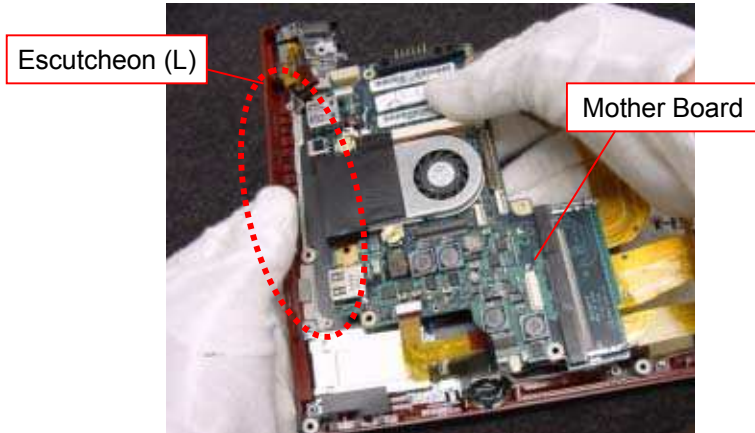
4)



Pull out the FPC (two places) vertically.

Mother Board -2

5)

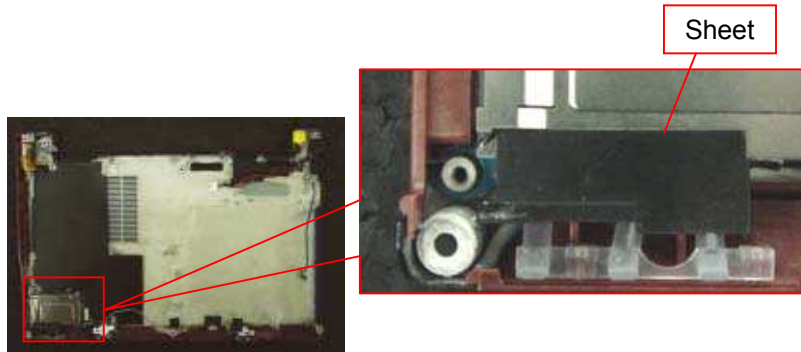


Remove the Mother Board.

*The connector portion is engaged with the Escutcheon (L).

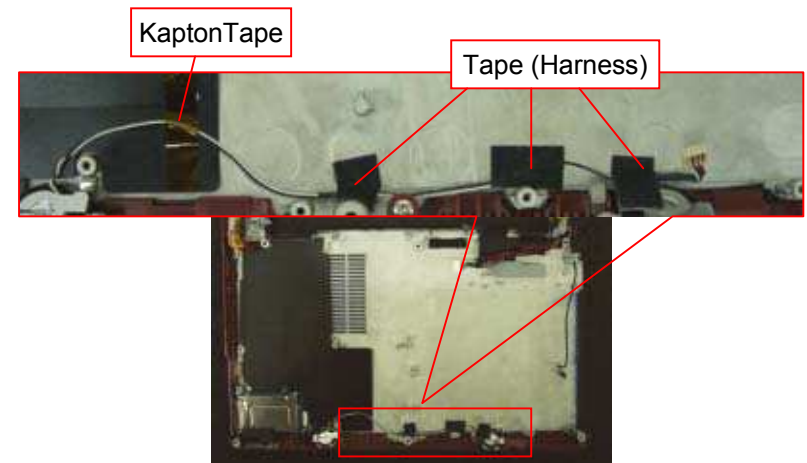
Escutcheon (Front), CNX-274 Board

1)



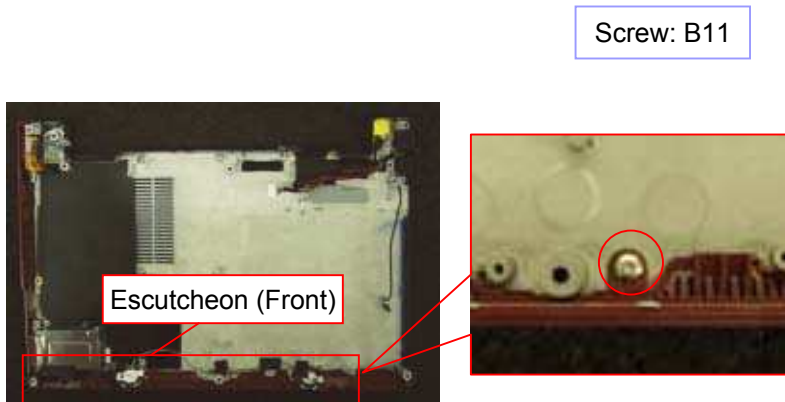
Peel off the Sheet (one place).

2)



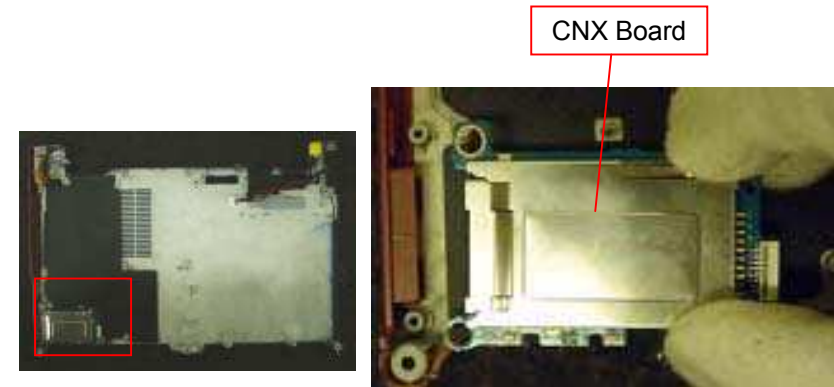
Peel off the Kapton Tape (one place) and Tape(Harness) (three places).

3)



Remove the one screw and the Escutcheon (Front).

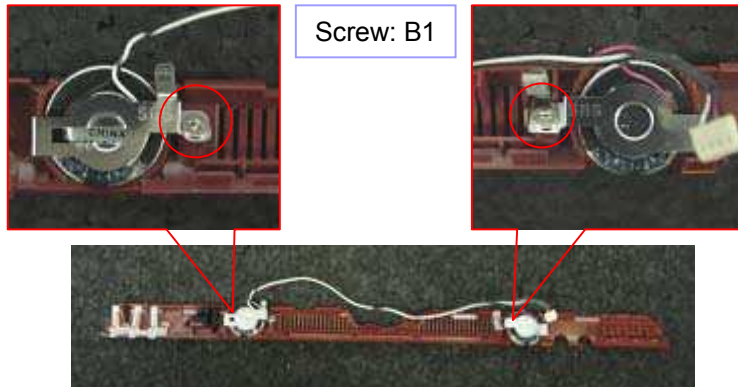
4)



Remove the CNX Board.

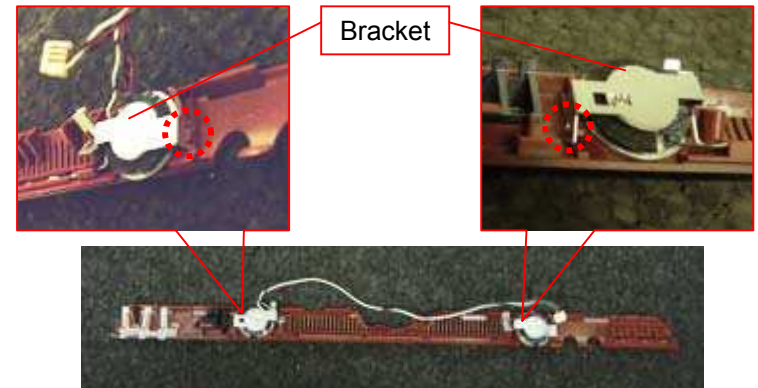
Parts of the Escutcheon (Front)

1)



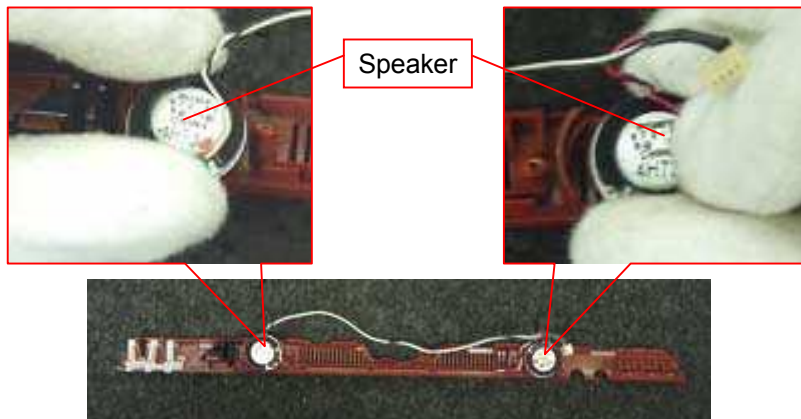
Remove the one screw on the both side in the right and the left.

2)



Remove the Bracket (two places) while disengaging the detent (each one place).

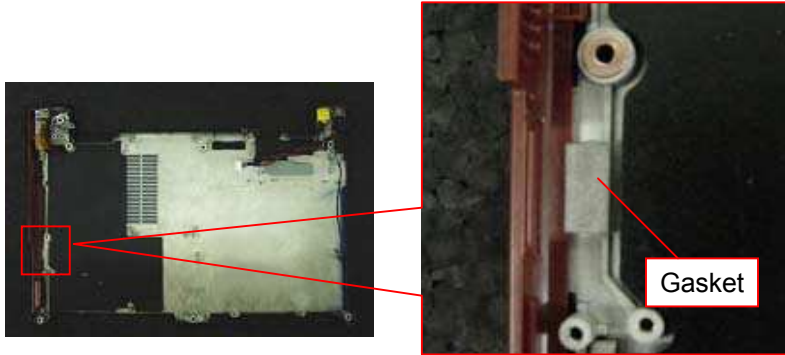
3)



Remove the Speaker (two places).

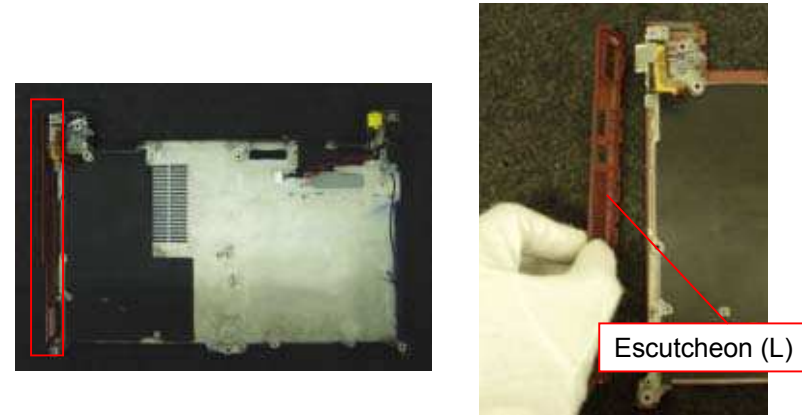
Escutcheon (L), Connector (VGA)

1)



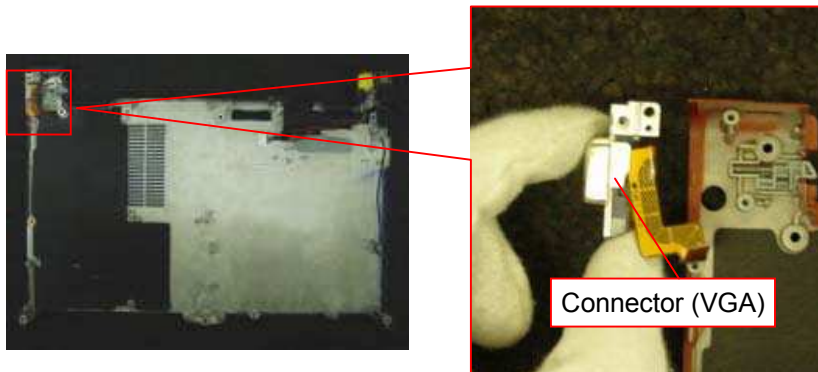
Peel off the Gasket (one place).

2)



Remove the Escutcheon (L).

3)

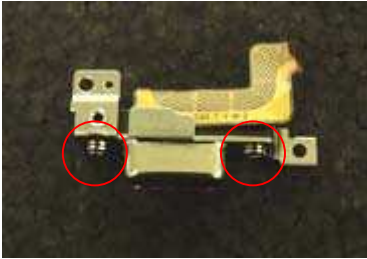


Remove the Connector (VGA).

Parts of the Connector (VGA)

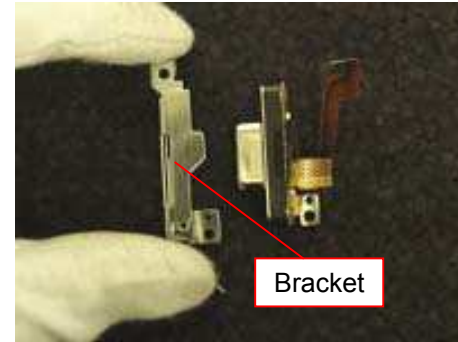
1)

Screw: B5



Remove the two screws.

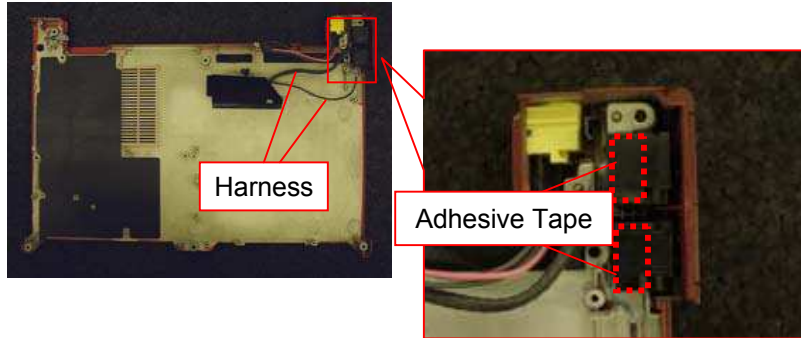
2)



Remove the Bracket.

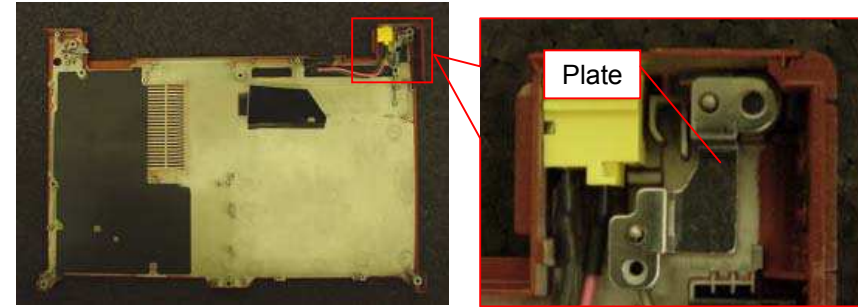
Parts of the Housing (Bottom) -1

1)



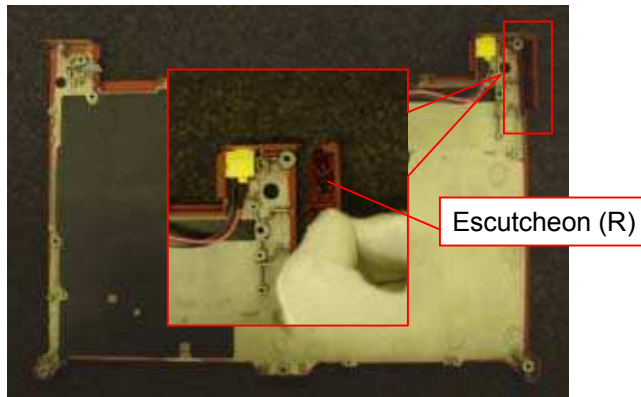
Remove the Harness (two places).
*The adhesive tapes are attached to the rear.

2)



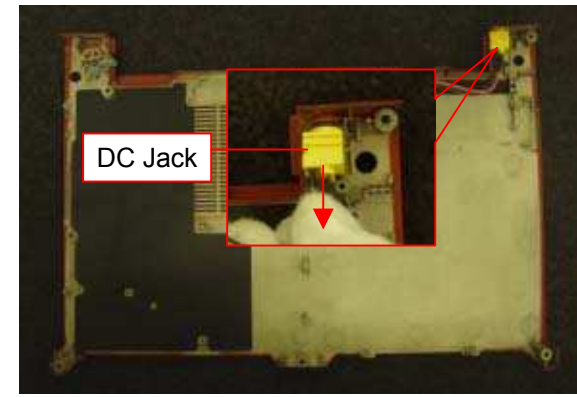
Remove the Plate.

3)



Remove the Escutcheon (R).

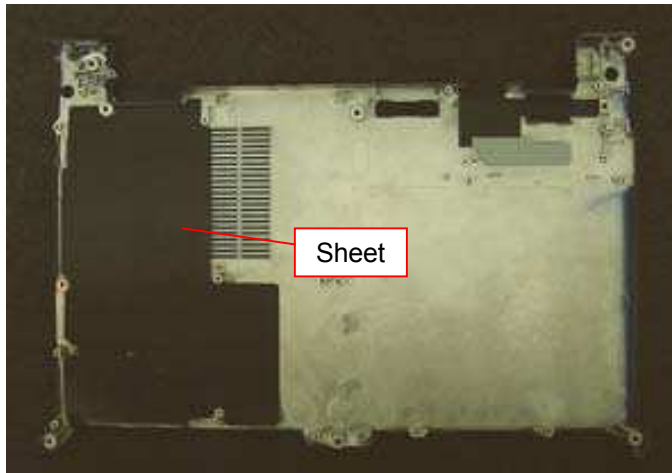
4)



Remove the DC Jack while sliding it toward the front side.

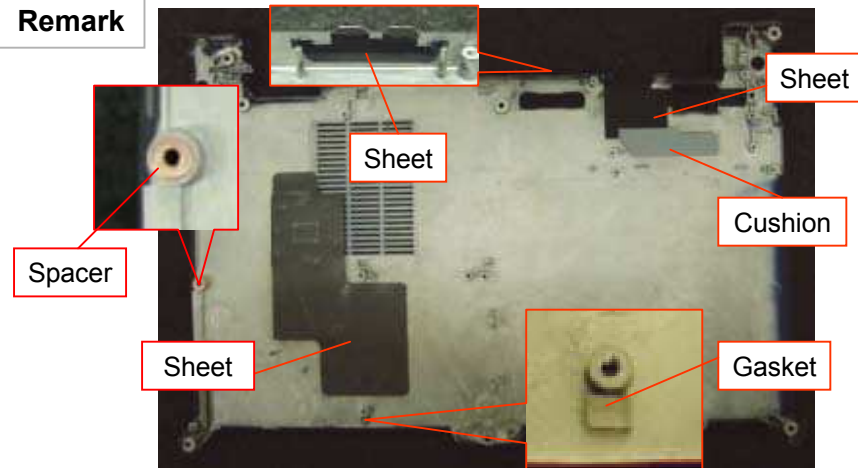
Parts of the Housing (Bottom) -2

5)



Remove the Sheet.

Remark



The Sheet (three places), Gasket (one place), Cushion (one place) and Spacer (one place) are attached to the Housing (Bottom).

Update History

[ADD]---Addition [DEL]---Deletion [CHG]---Change [COR]---Correction [MA]---Model Addition

Date		Contents	Version No.
-	-	-	-