

# Chapter 1. Disassembly & Assembly Guide

---

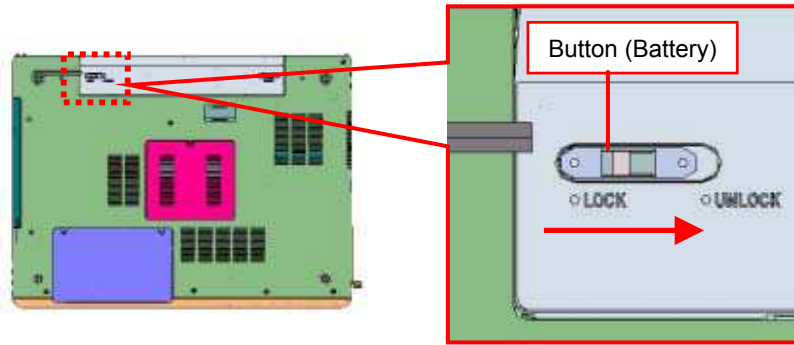
## 1-3. Disassembly & Assembly

### - Main Section -

#### MS-1 Main Section Disassembly

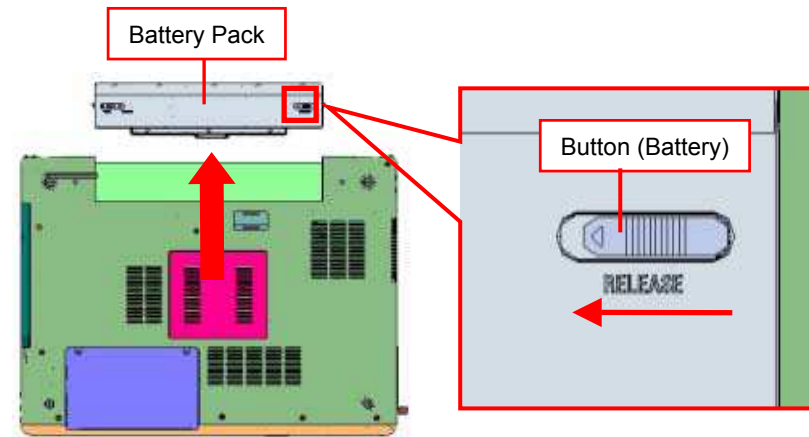
## Battery Pack

1)



Slide the Button (Battery) to UNLOCK position.

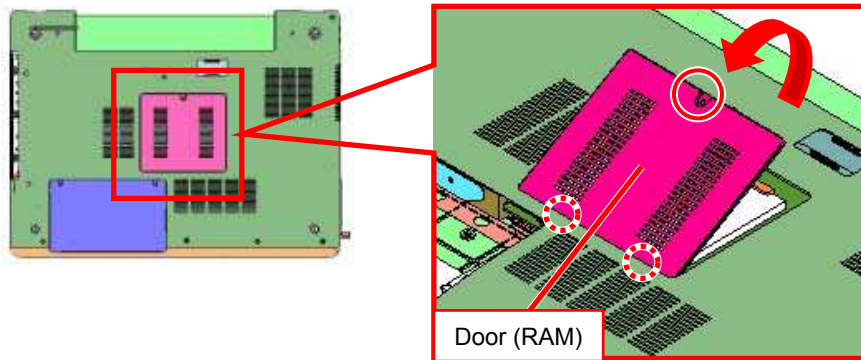
2)



While sliding the Button (Battery) to RELEASE side, remove the Battery Pack.

# Memory

1)

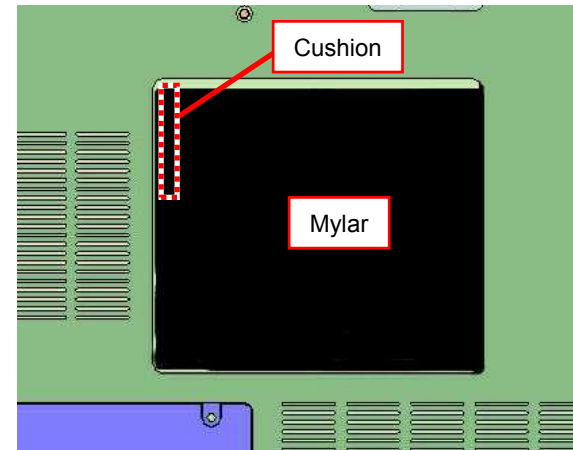


Remove the one screw, and the Door (RAM).

\* There are two detents on the front.

\* This screw is built-in screw of the Door (Memory).

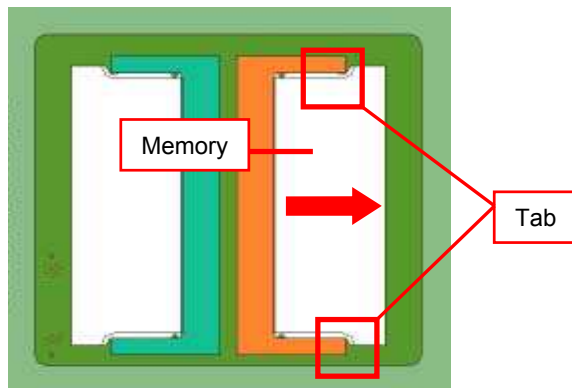
2)



Peel off the Mylar.

\* There are Cushion (one place) under the Mylar.

3)

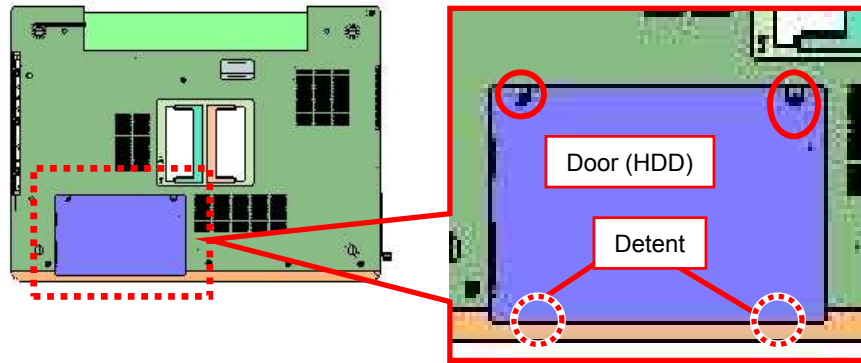


Outspread the tabs (two places) simultaneously to release the lock and pull out the Memory in the direction of the arrow.

\* If there are two Memory, remove the other side of the Memory as the same procedure as above.

## HDD-1

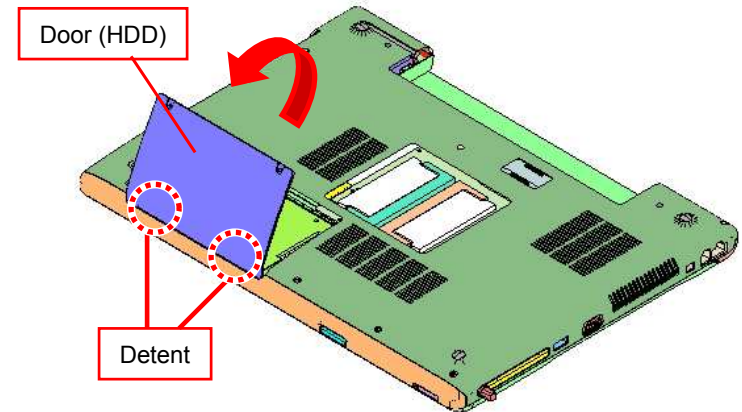
1)



Remove the two screws.

\* These screws are built-in screws of the Door (HDD).

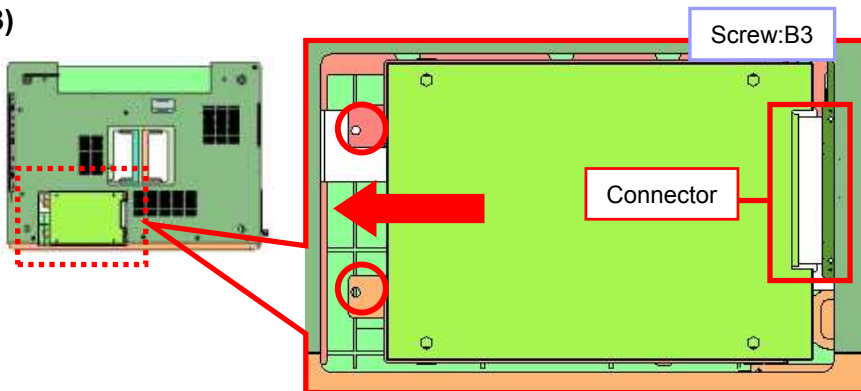
2)



Remove the Door (HDD) toward the front.

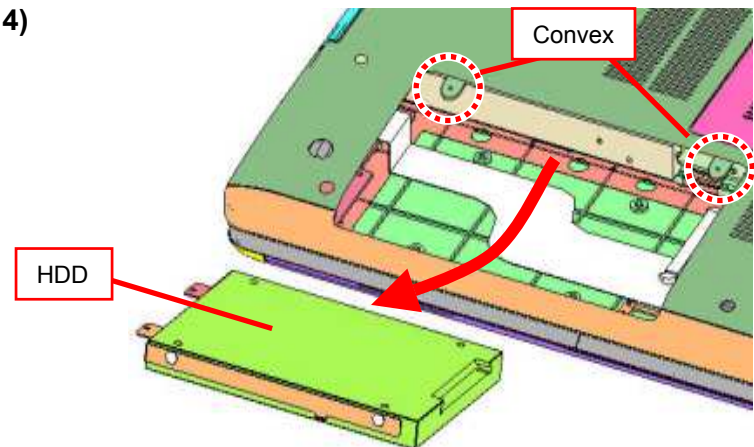
\* There are two detents on the front.

3)



Remove the two screws, and disconnect the connector portion by sliding it in the direction of the arrow.

4)

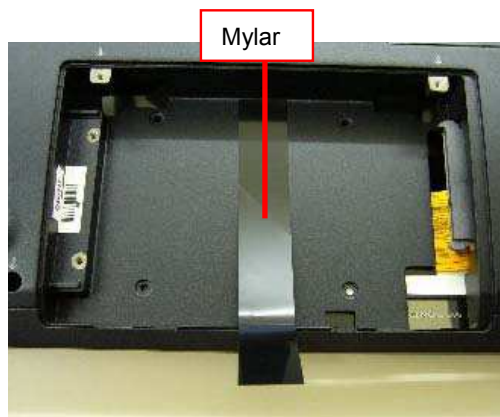


Raise the front side of the HDD, and remove it toward the front.

\* When removing the HDD, pay attention to the convex portion.

## HDD-2 [ADD]

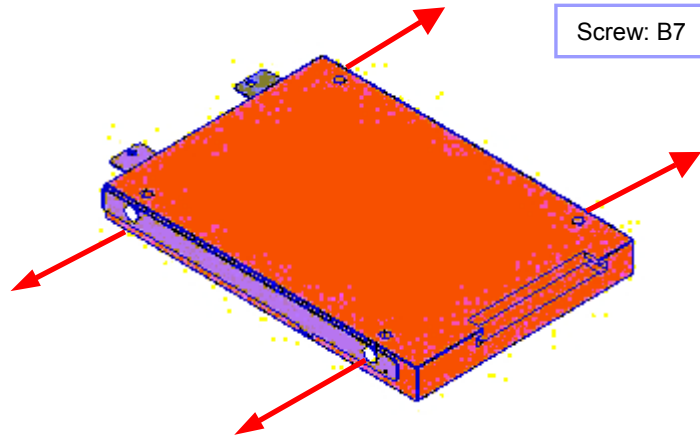
5) [ADD]



Peel off the Mylar (one place).

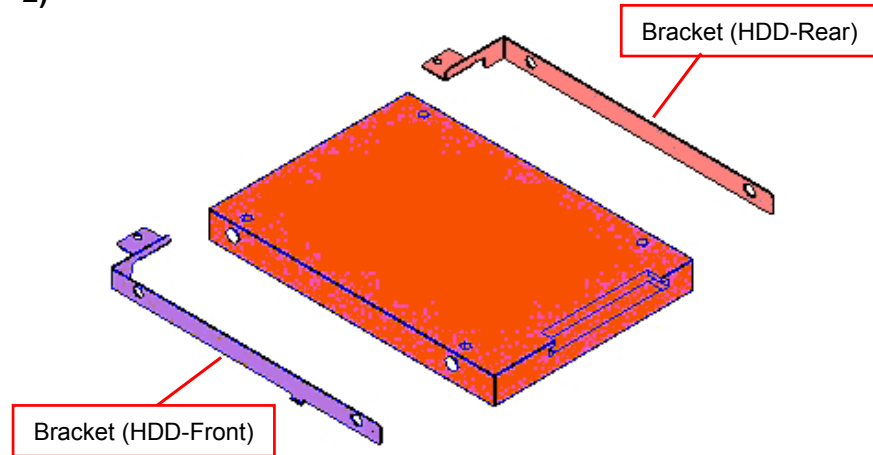
## Parts of the HDD

1)



Remove the two screws each on the right and left sides.

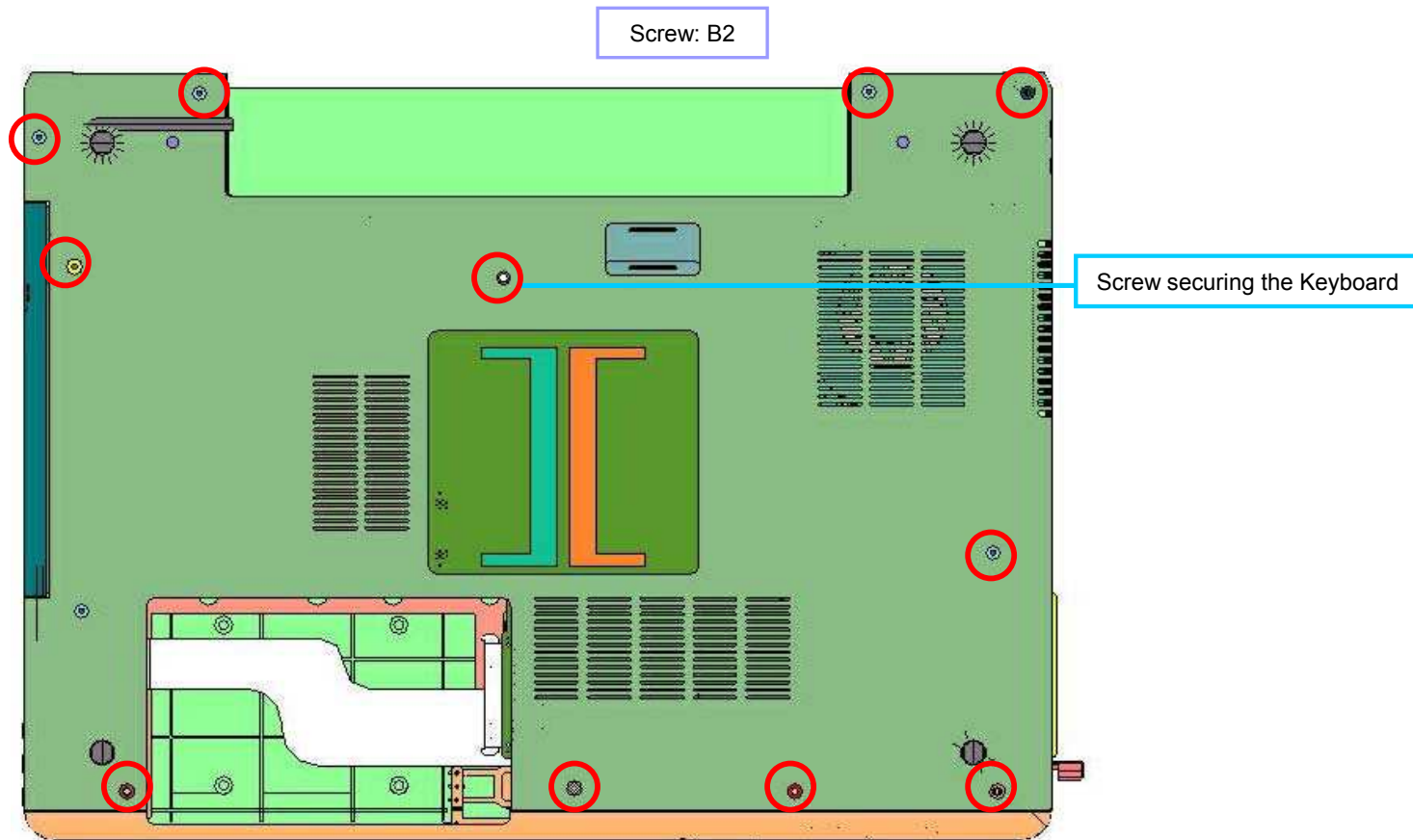
2)



Remove the Bracket (two places).

## Screws (Bottom)

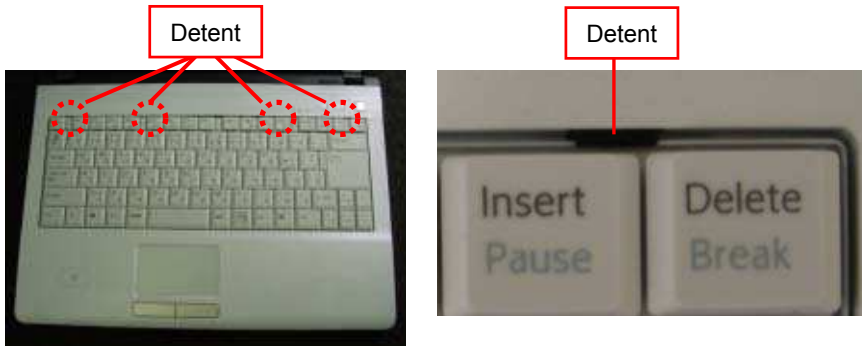
1)



Remove the 11 screws.

# Keyboard

1)

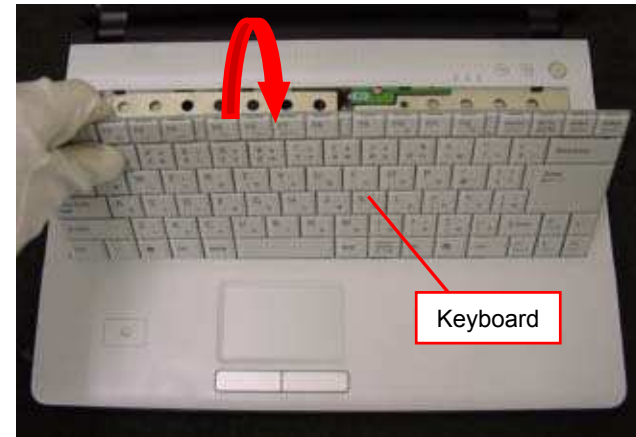


Disengage the detent (four places).

\* Push the detent lightly downward, and the detent is disengaged.

\* There are detents around the F1, F5, F11, and Insert key.

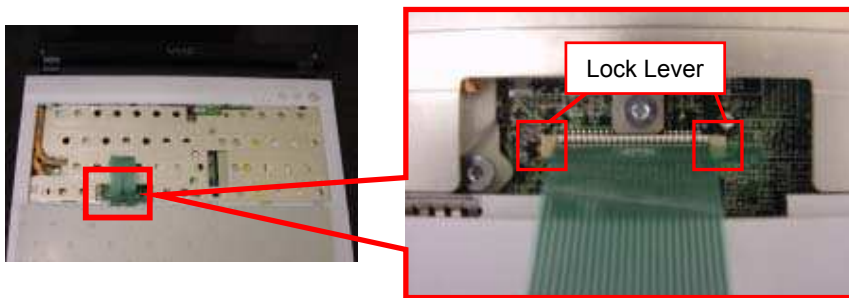
2)



Raise the Keyboard toward the front.

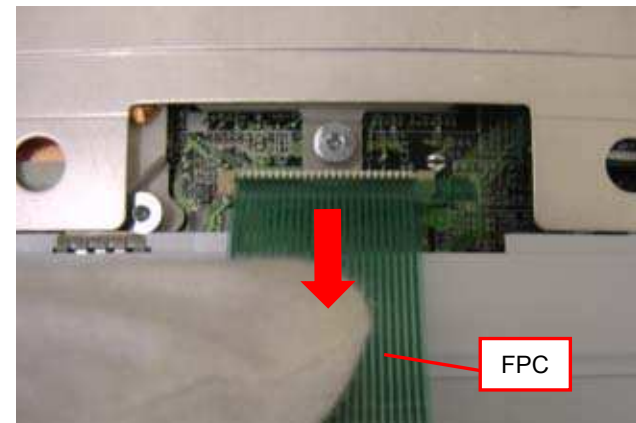
\* The FPC is connected to the Keyboard.

3)



Slide the lock lever upward and release the lock.

4)

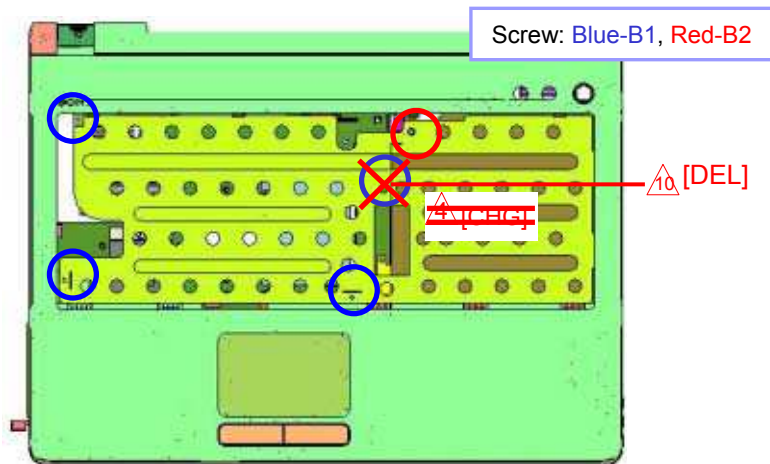


Remove the FPC upward.

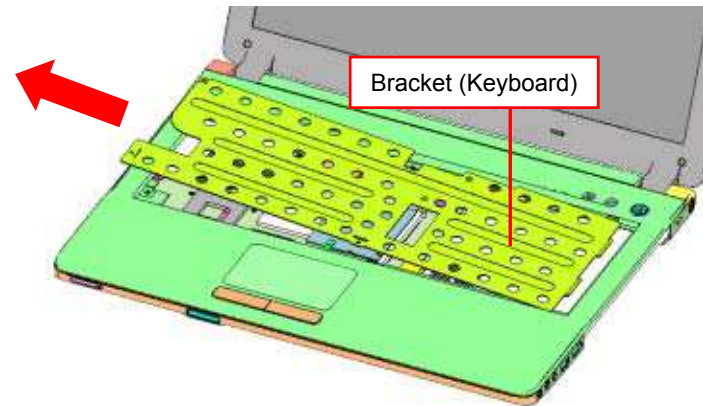


# Keyboard Bracket, Optical Disc Drive

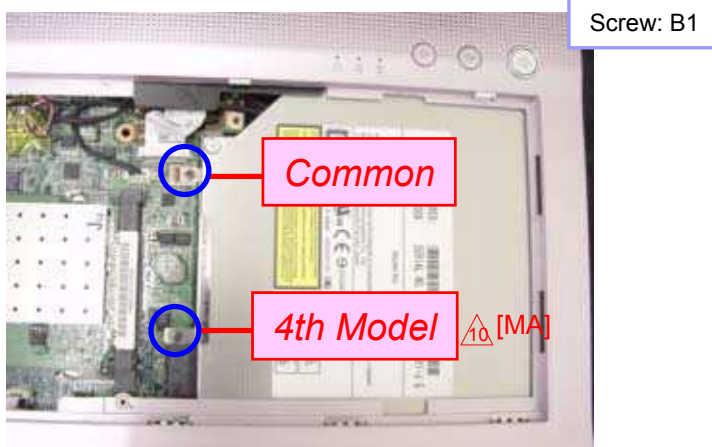
1)



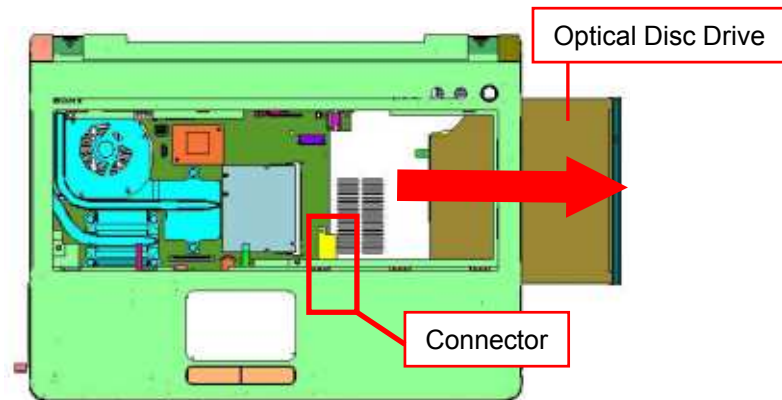
2)



3) [ADD]

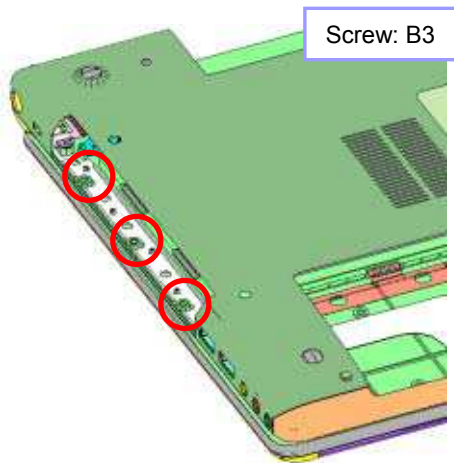


4)



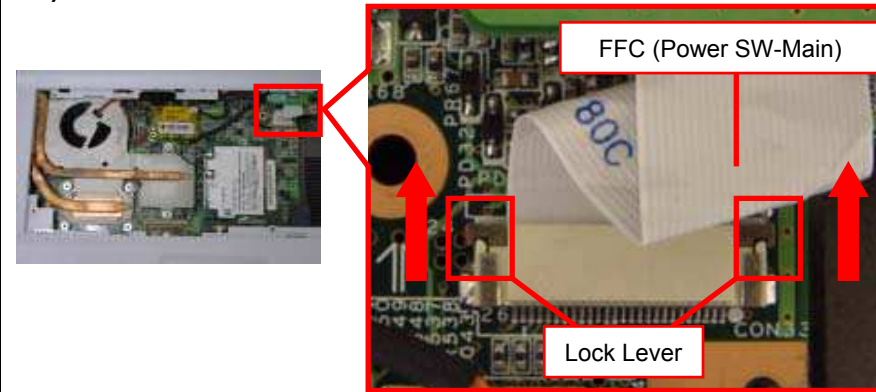
# Palmrest-1

1)



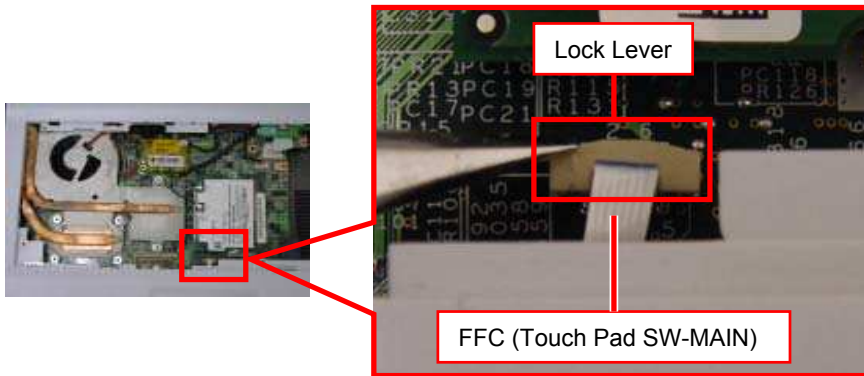
Close the Display, turn over the Main Unit, and remove the three screws.

2)



Slide the lock lever in the direction of the arrow to release the lock, and disconnect the FFC (one place).

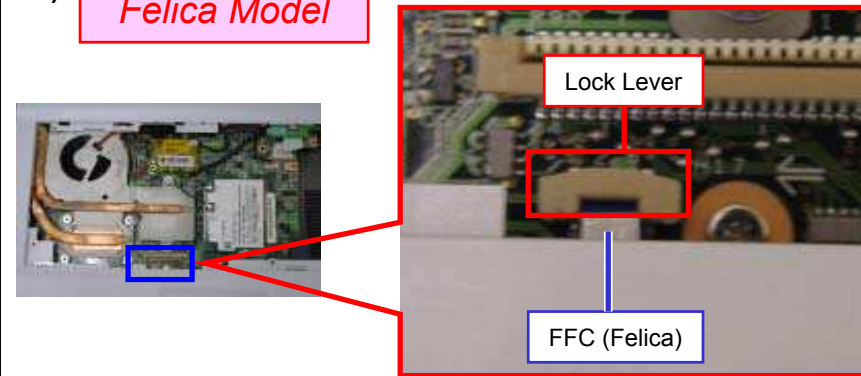
3)



Slide the lock lever upward to release the lock, and disconnect the FFC (one place).

4)

*Felica Model*

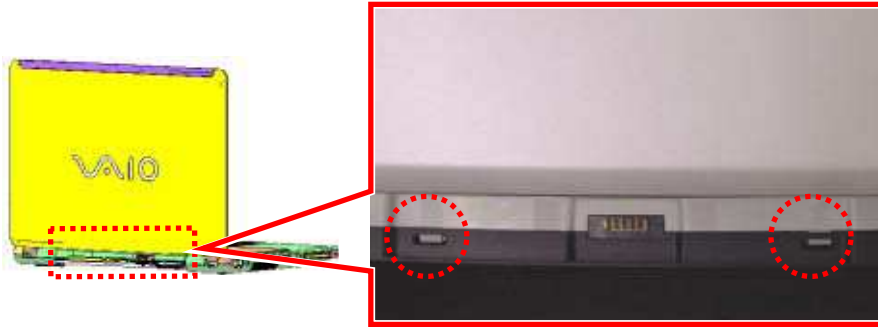


Slide the lock lever upward to release the lock, and disconnect the FFC (one place).

## Palmrest-2

5)

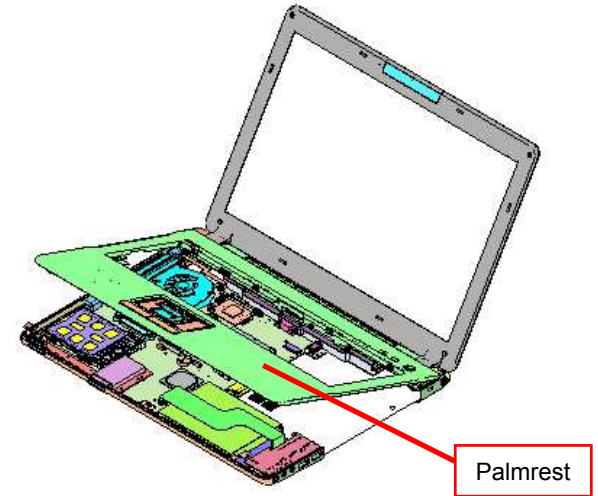
Rear Side



Open the LCD Section and disengage the detent (two places) from the rear side of the main unit with a bamboo spatula.

\* Push the detent lightly, and the detent is disengaged.

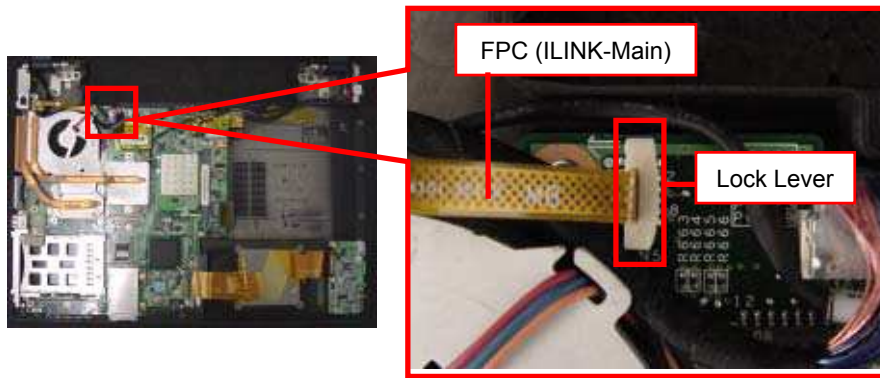
6)



Remove the Palmrest from the front side.

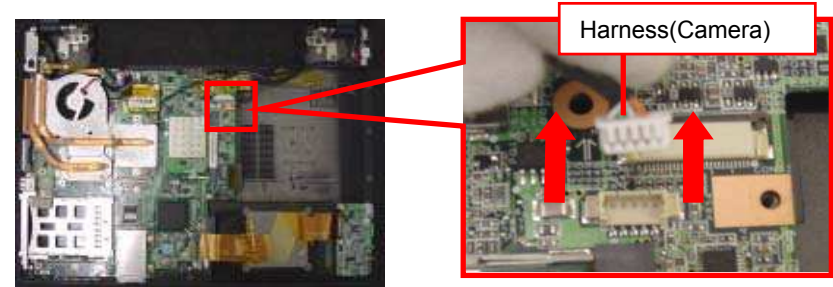
## LCD Section-1

1)



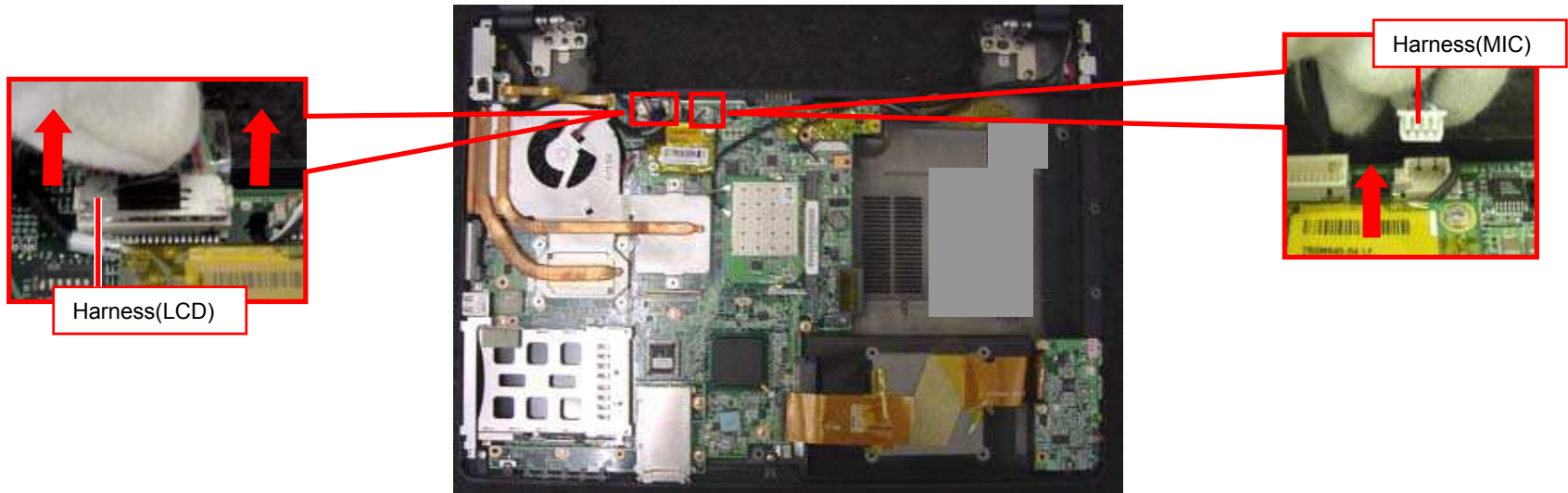
Slide the lock lever upward to release the lock, and remove the FPC (one place).

2)

*Camera Model*

Pull out the Harness (one place).

3)

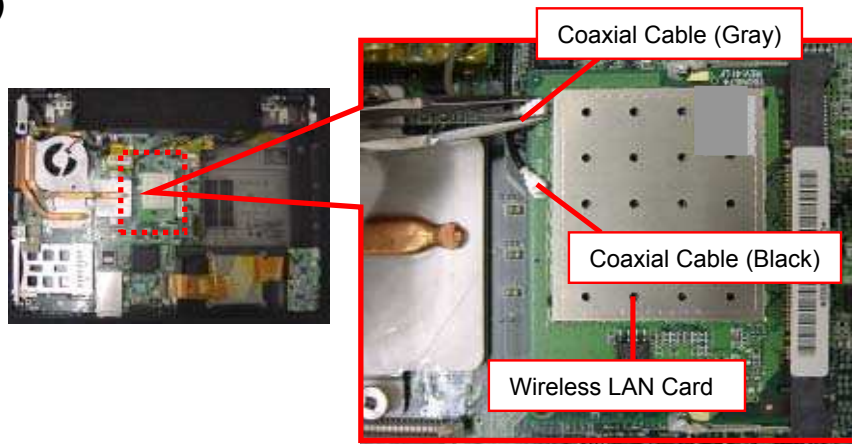


Disconnect the Harness (two places) by pulling it out.



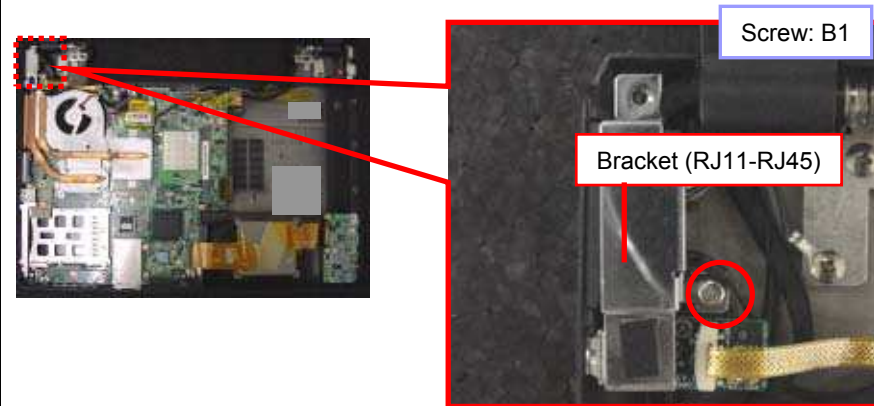
## LCD Section-2

4)



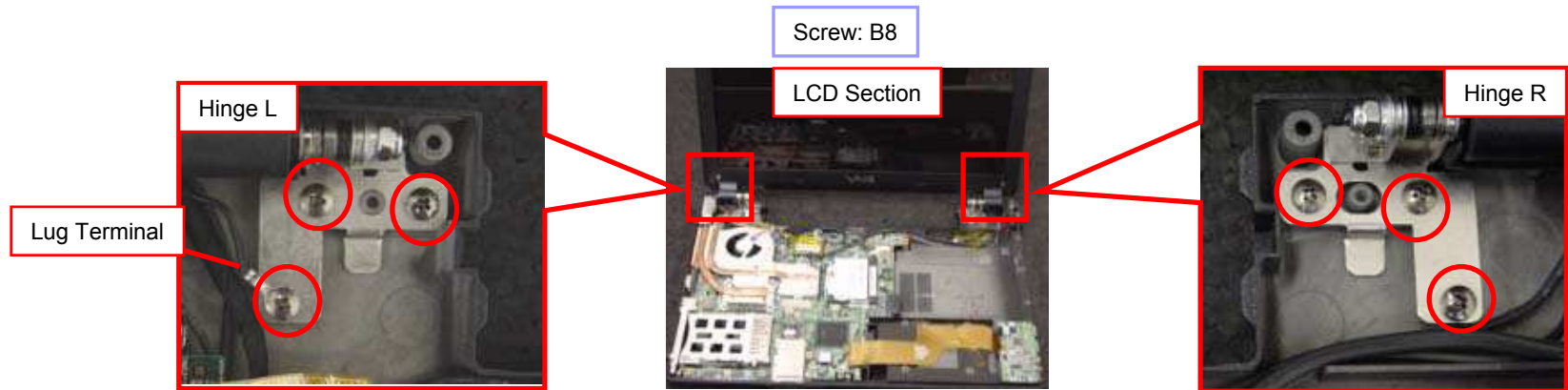
Remove the Coaxial Cable (two places) vertically with tweezers or the like.

5)



Remove the screw, and remove the Bracket.

6)



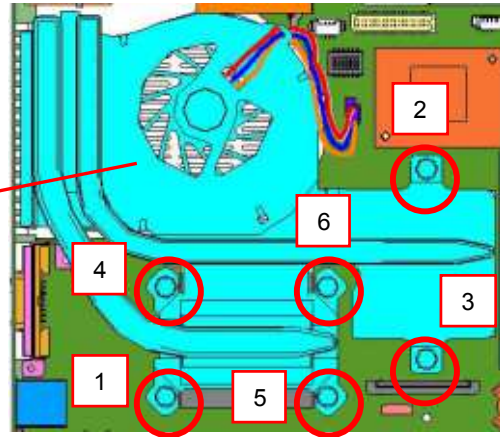
Remove the six screws, lift up the LCD Section with both hands, and remove the LCD Section.

\* Hold the LCD Section not to fall down.

\* The Lug terminal is secured together with the Hinge (L) with a screw.

## Cooling Unit

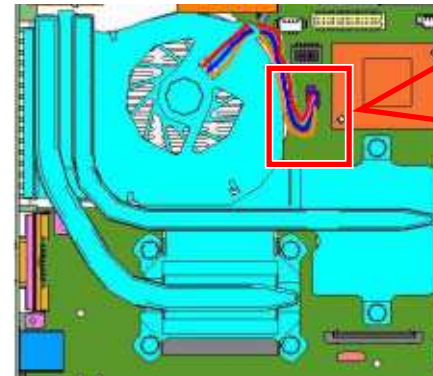
1)



Remove the six screws in order.

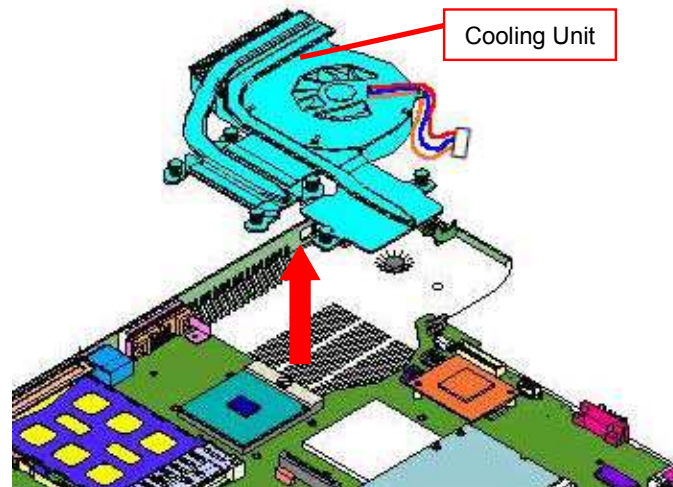
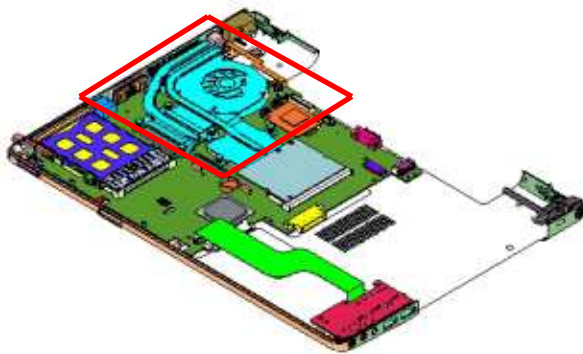
\* These screws are built-in screws of the Cooling Unit.

2)



Pull out the Harness (one place) upward.

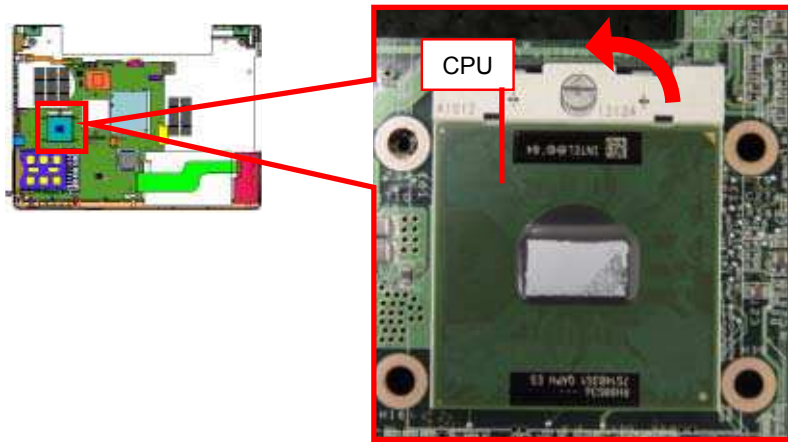
3)



Remove the Cooling Unit.

# CPU

1)



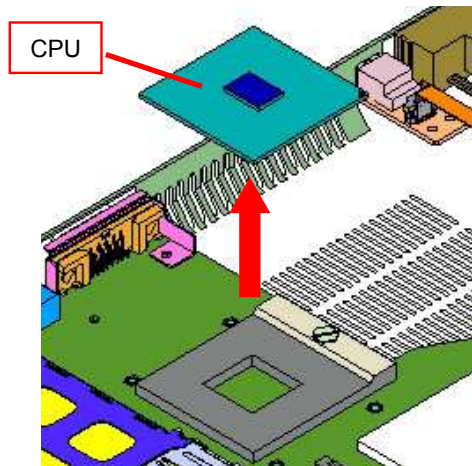
Rotate the lock screw in the counterclockwise direction with a 4 mm flat-head (-) screwdriver and release the lock.

## Remark



Release the lock by rotating the lock screw as shown in the picture.

2)



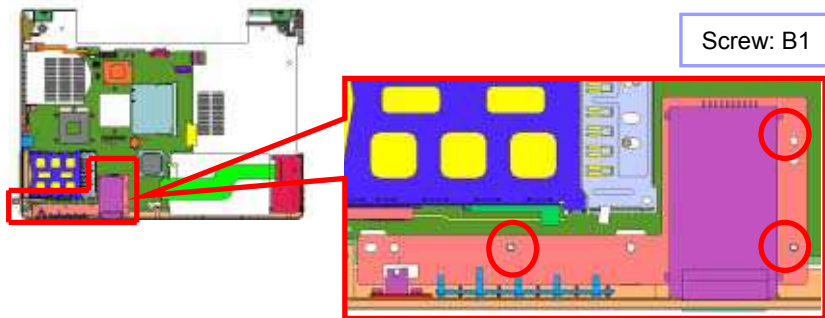
Remove the CPU vertically.

\* Be careful not to bend the pins.



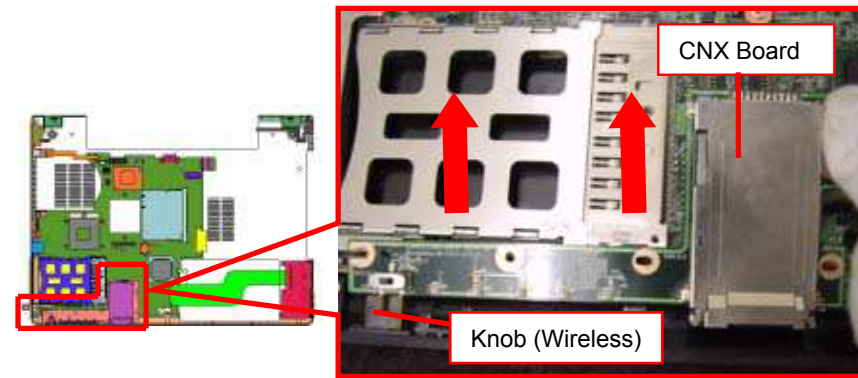
# CNX-339 Board, Door (PCMCIA)

1)



Remove the three screws.

2)

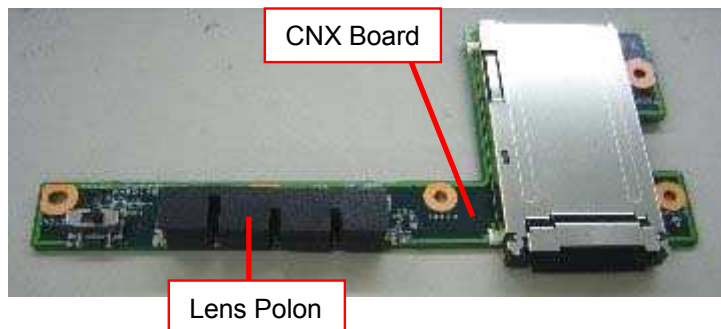


Remove the CNX Board in the direction of the arrow.

\* Remove it not to apply the excessive pressure to the Knob (Wireless).

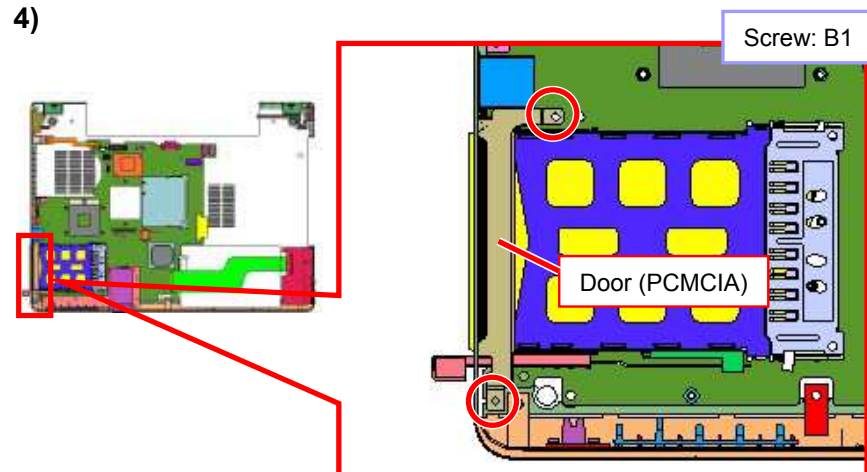
3)  $\triangle$ [MA]  $\triangle$ [MA]

**Except 1st Model**



Remove the Lens Polon (one place).

4)

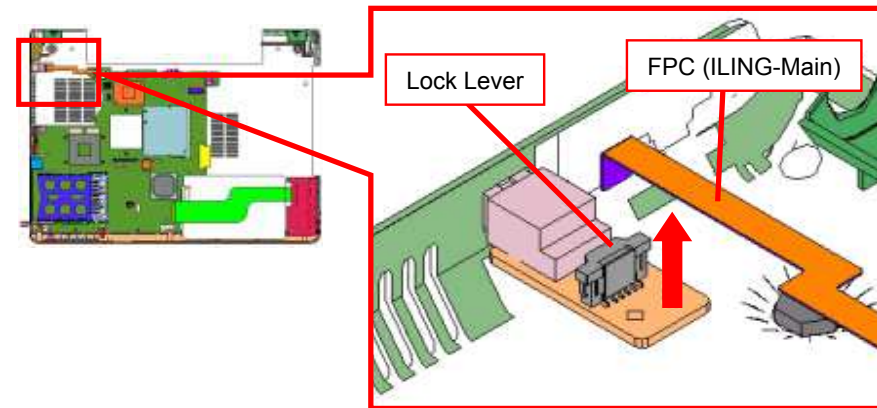


Remove the two screws, and the Door (PCMCIA).



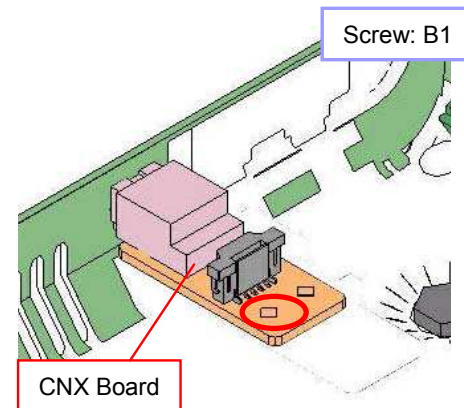
## CNX-344 Board

1)



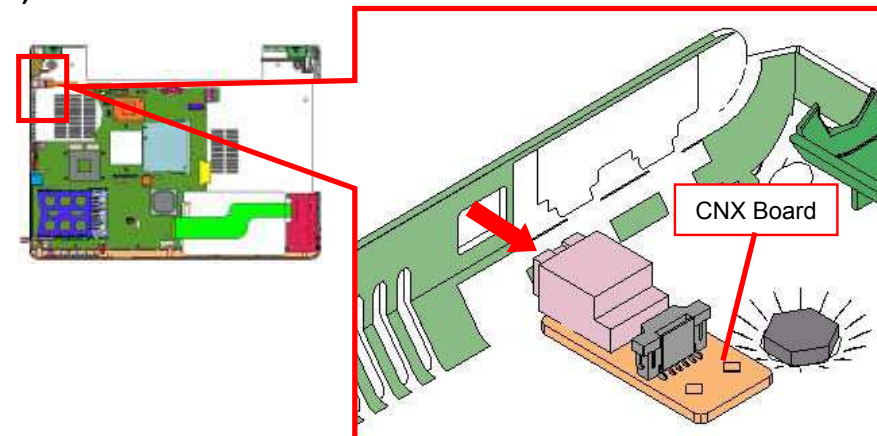
Slide the lock lever upward to release the lock, and pull out the FPC upward.

2)



Remove the one screw.

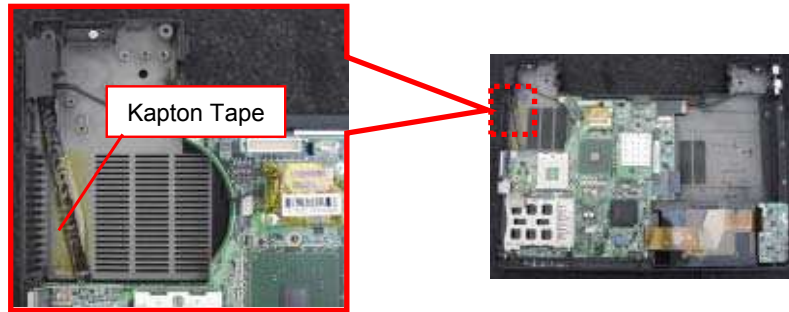
3)



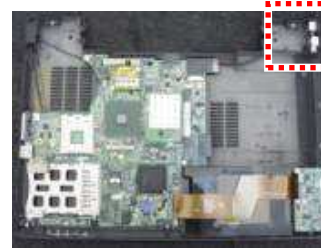
Remove the CNX Board in the direction of the arrow.

# Mother Board-1

1)

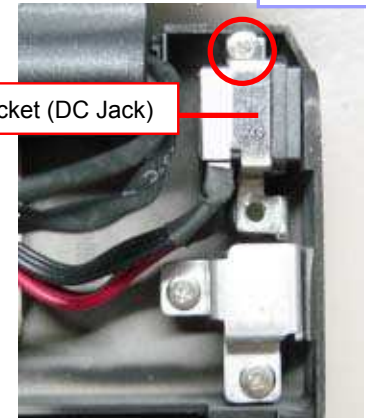


Peel off the Kapton Tape (one place).

2) ⚠[COR]

Bracket (DC Jack)

Screw:B3

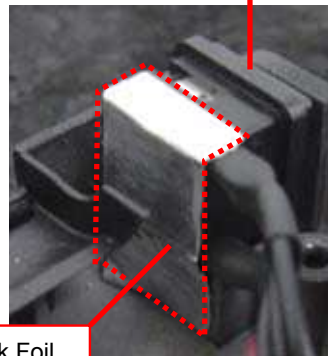


Remove the screw and the Bracket.

3) ⚠[ADD]

DC Jack

DC Jack Foil



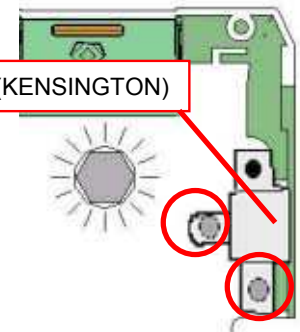
Peel off the DC Jack Foil (one place), and remove the DC Jack.

4)



Bracket (KENSINGTON)

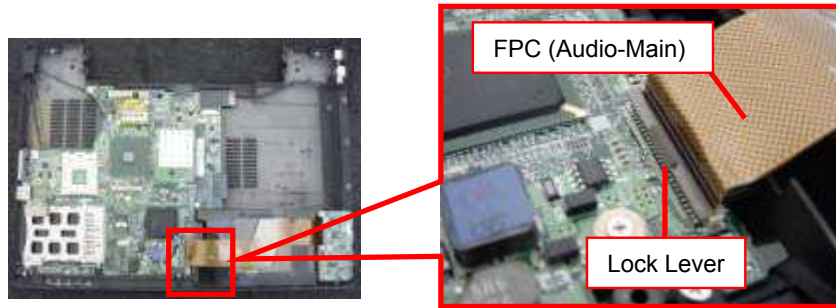
Screw:B1



Remove the two screws, and the Bracket.

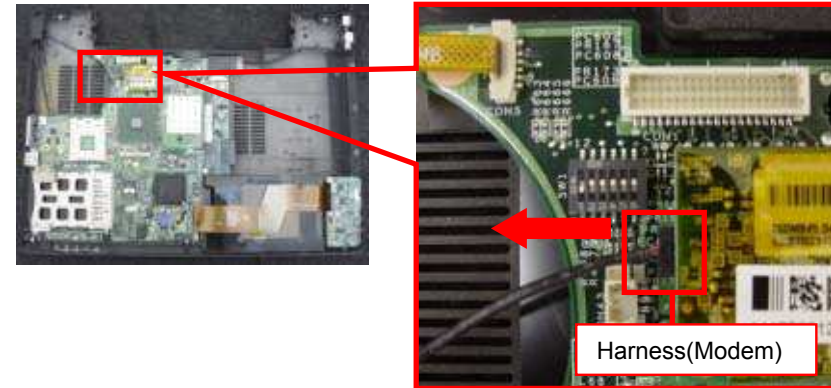
## Mother Board-2

5)



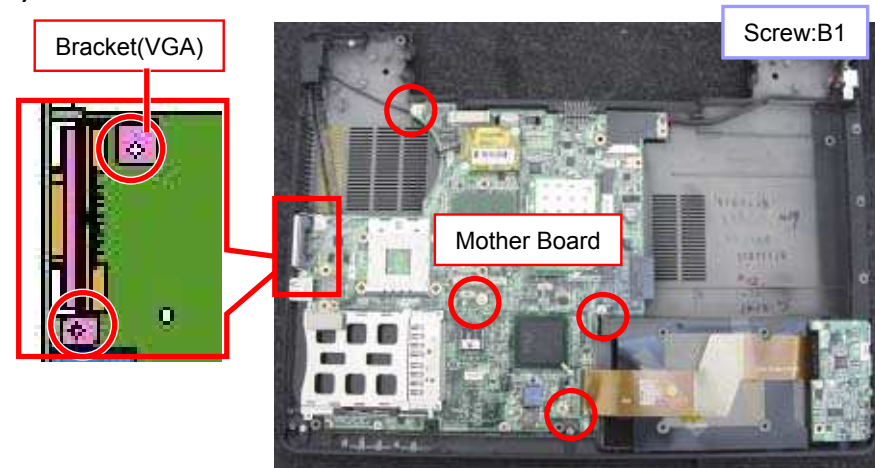
Raise the lock lever upward to release the lock, and disconnect the FPC.

6)



Disconnect the Harness (Modem) in the direction of the arrow.

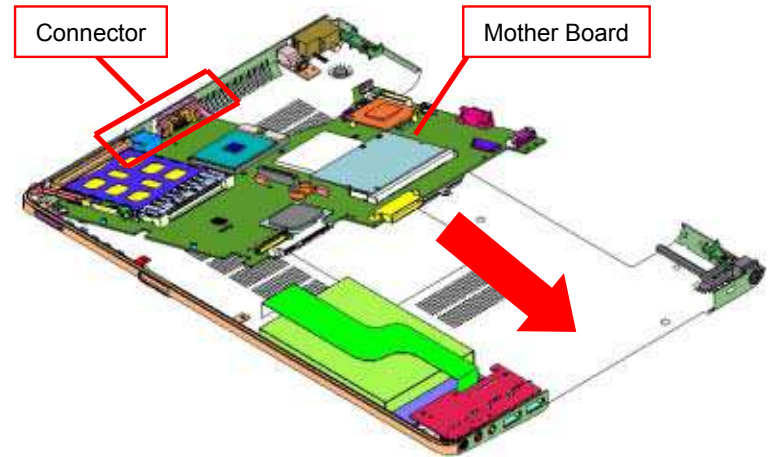
7)



Remove the six screws.

\* The Bracket is secured together with the Mother Board.

8)



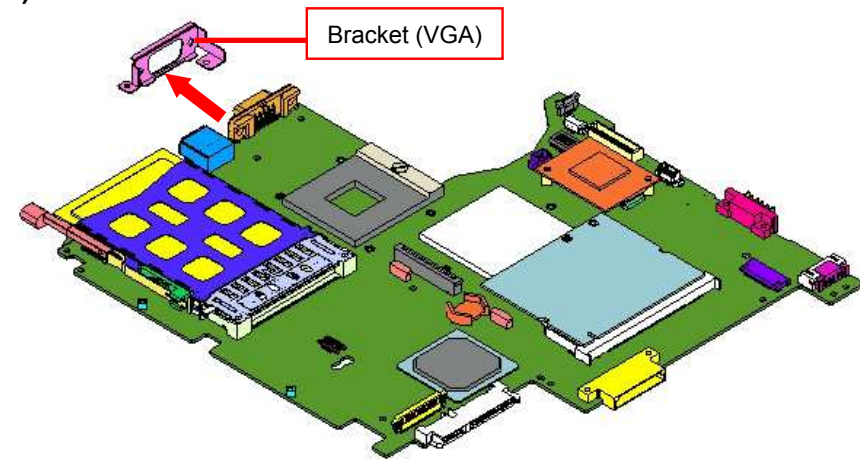
Raise the Mother Board from the right side, and remove it in the direction of the arrow.

\*Be careful not to apply the excessive pressure to the connector portions.

FJ Series

## Mother Board-3

9)

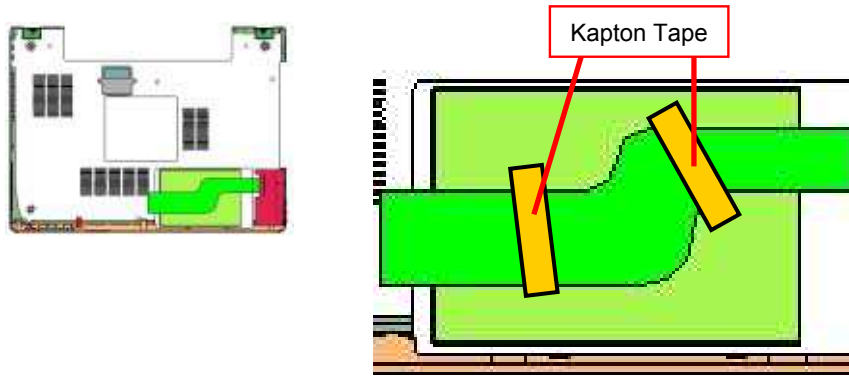


Remove the Bracket in the direction of the arrow.



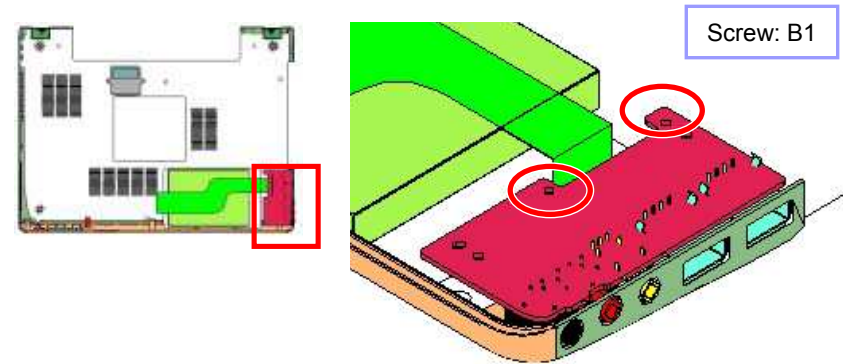
## ANL-63 Board

1)



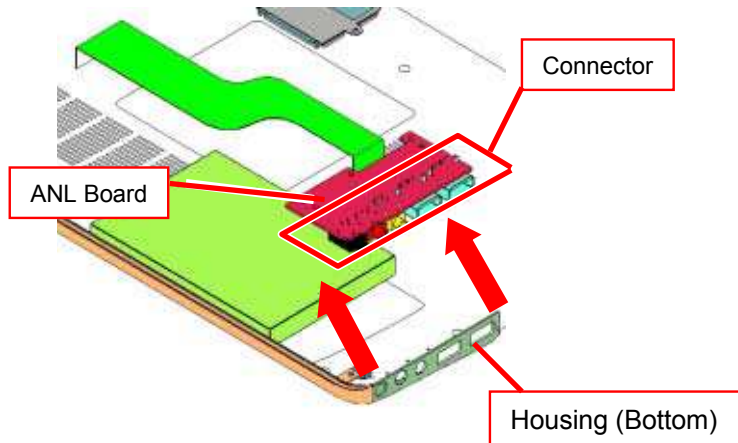
Peel off the Kapton Tape (two places).

2)



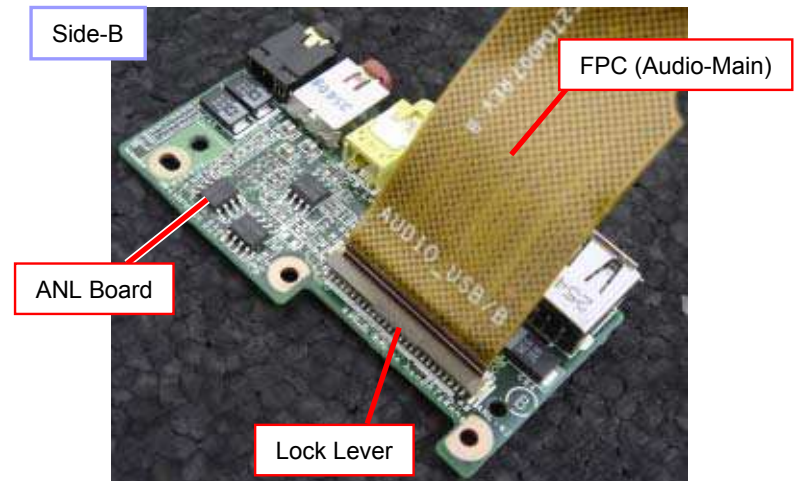
Remove the two screws.

3)



While releasing the connector portion, remove the ANL Board in the direction of the arrow.

4)

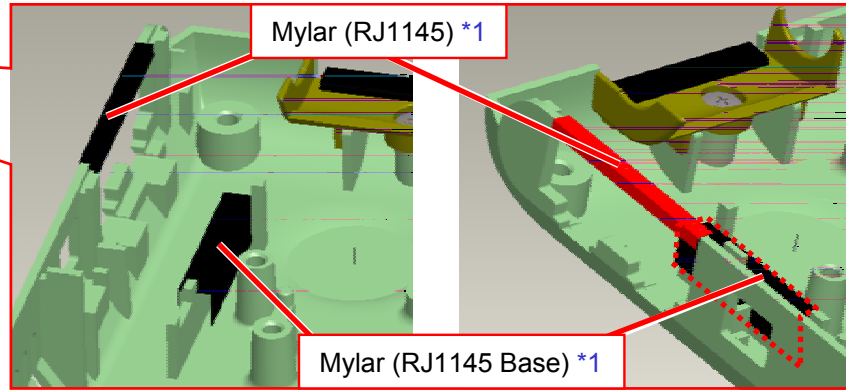
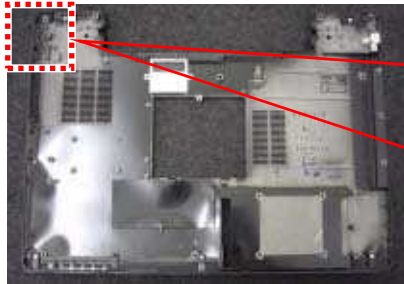


Raise the lock lever upward to release the lock, and disconnect the FPC upward.

## Parts of the Housing (Bottom)-1

1)  [ADD]

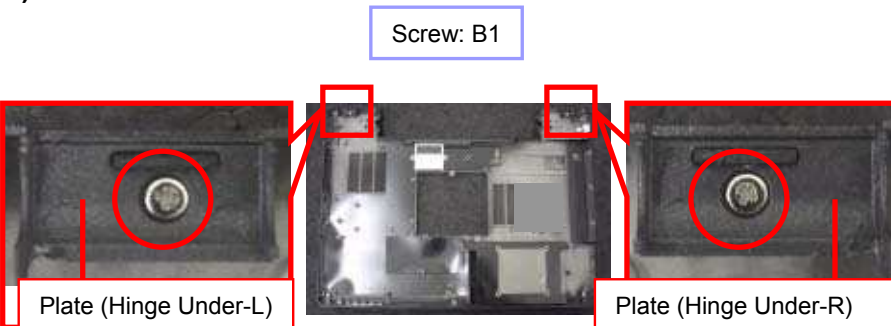
*FJ56G, FJ58GP*



Peel off the Mylar (two place).

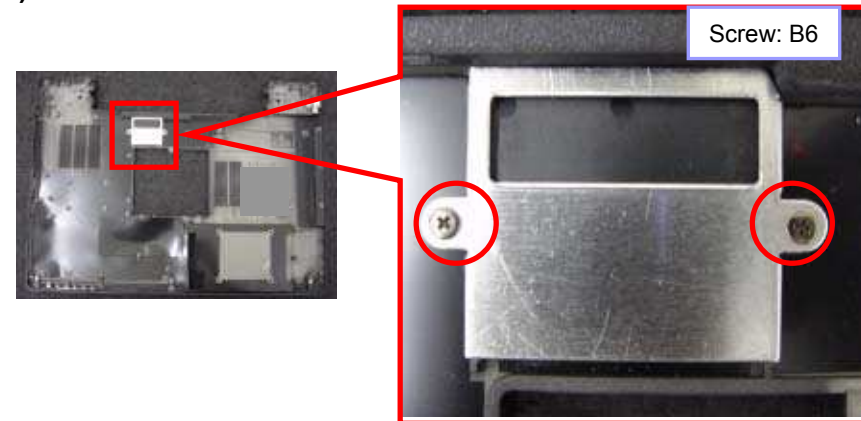
\*1: Above two figures show the same parts from another angle.

2)



Remove the two screws, and the Plate (two places).

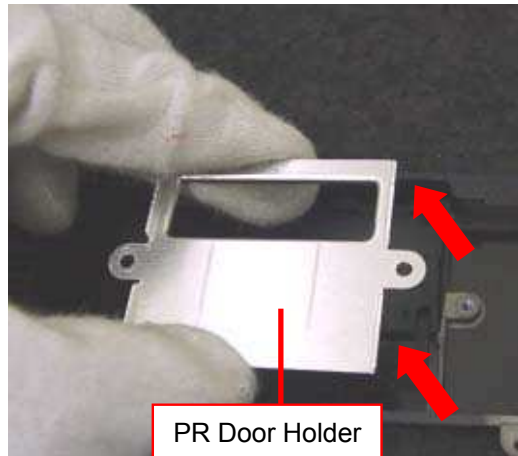
3)



Remove the two screws.

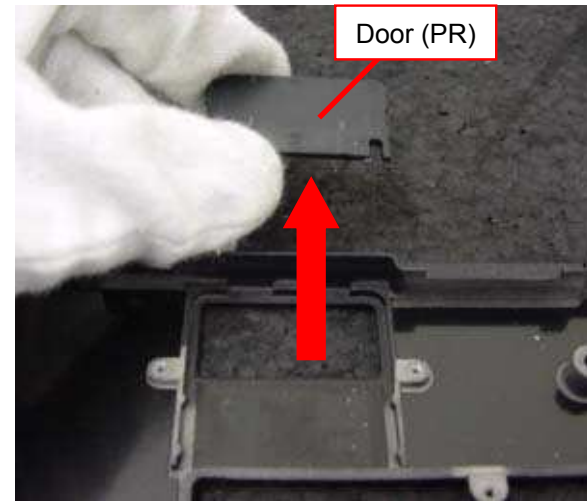
## Parts of the Housing (Bottom)-2

4)


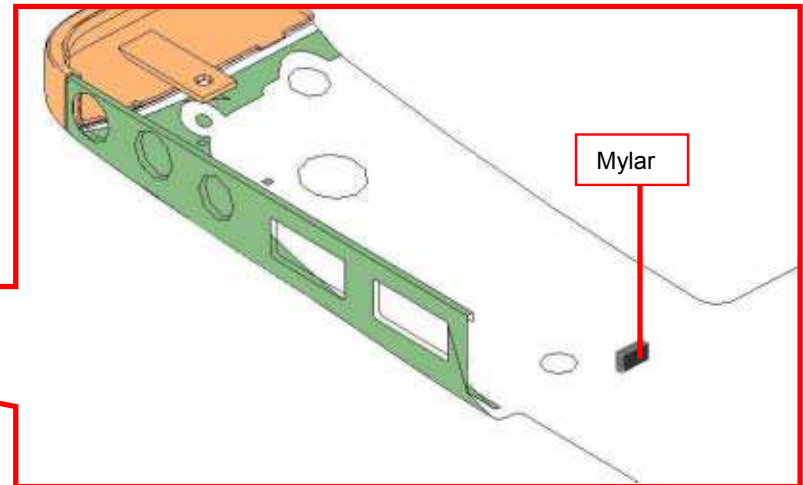
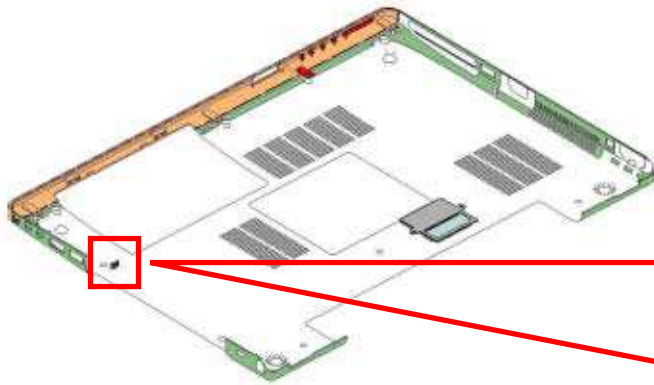


Remove the PR Door Holder vertically.

5)



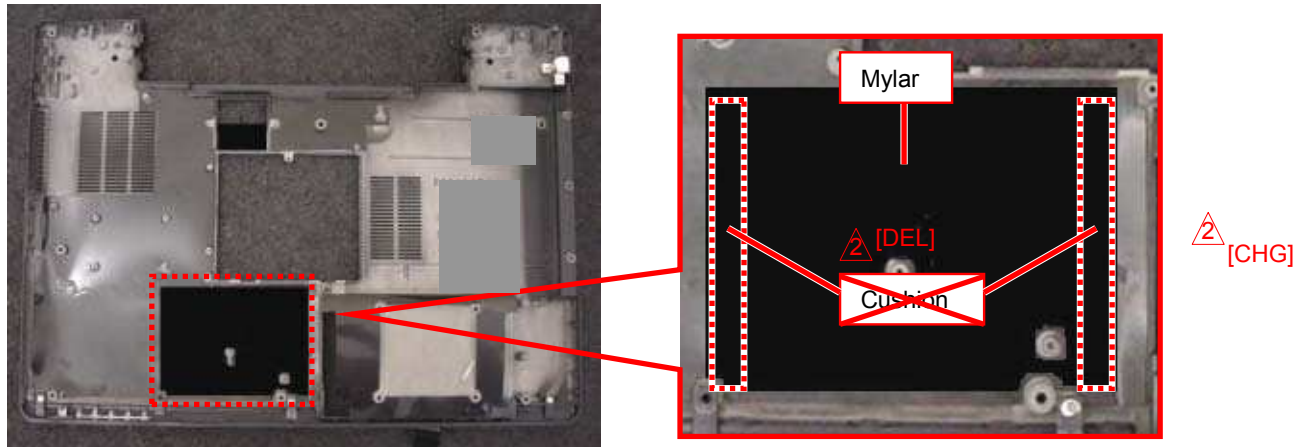
Remove the Door (PR) vertically.

6)  [ADD]

Peel off the Mylar (one place).

## Parts of the Housing (Bottom)-3

7)

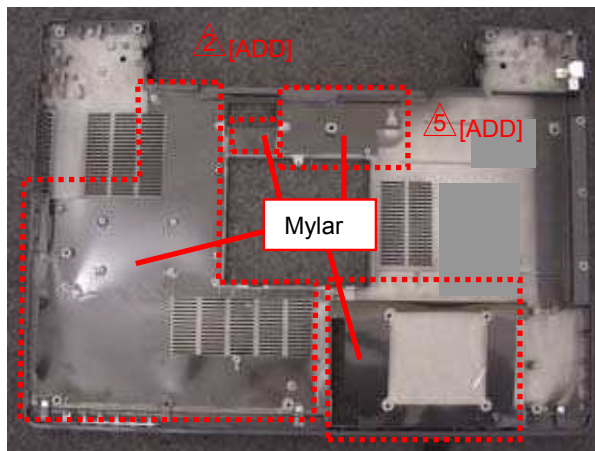


Peel off the Mylar (one places).

~~\* There are Cushions (two places) under the Mylar~~

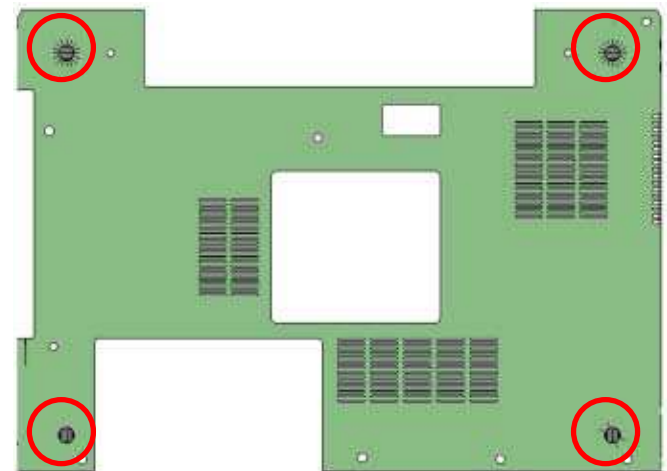
△ [DEL]

8)



Peel off the Mylar (four places).

9)

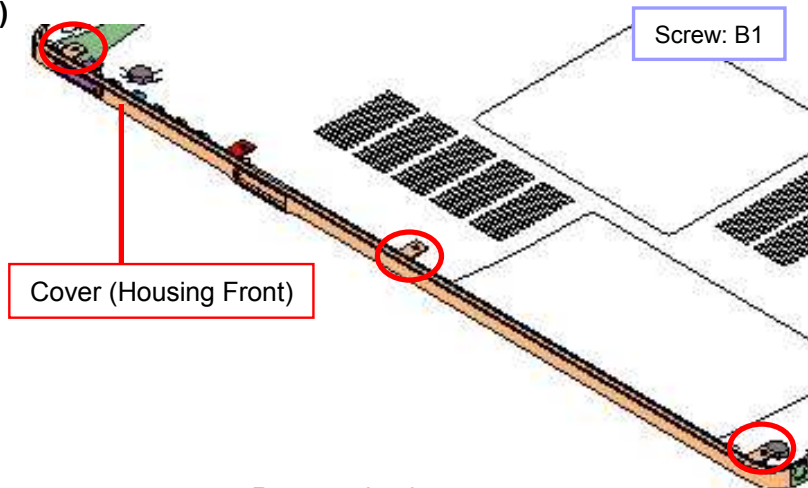


Peel off the Foot (four places).



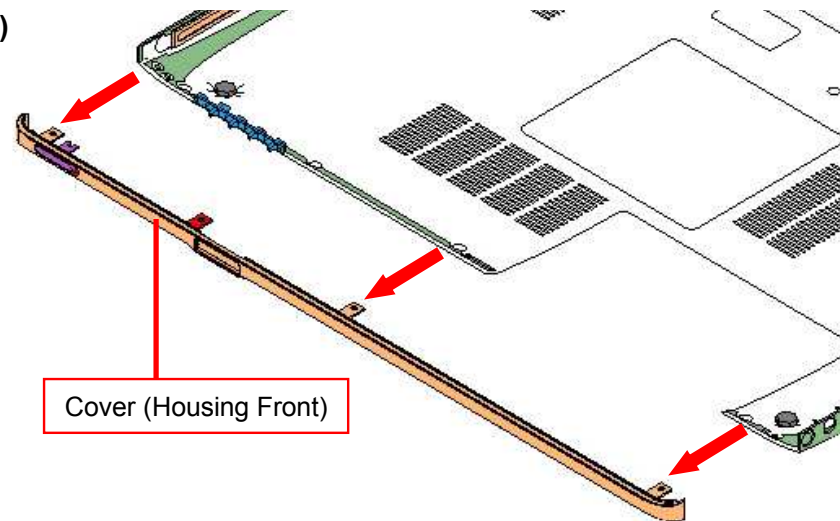
## Parts of the Housing (Bottom)-4

10)



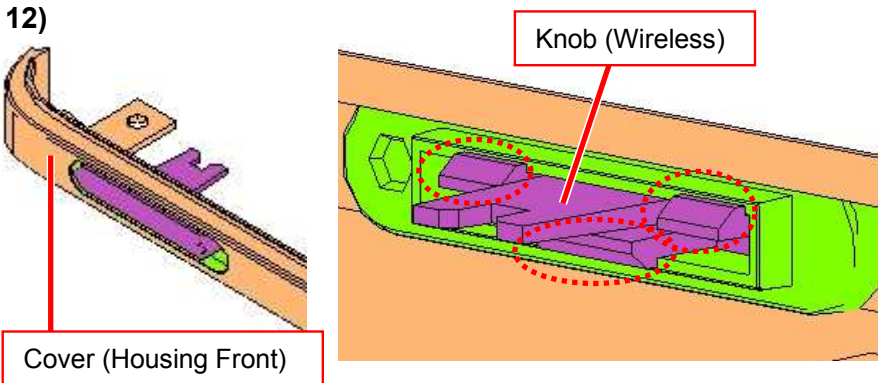
Remove the three screws.

11)



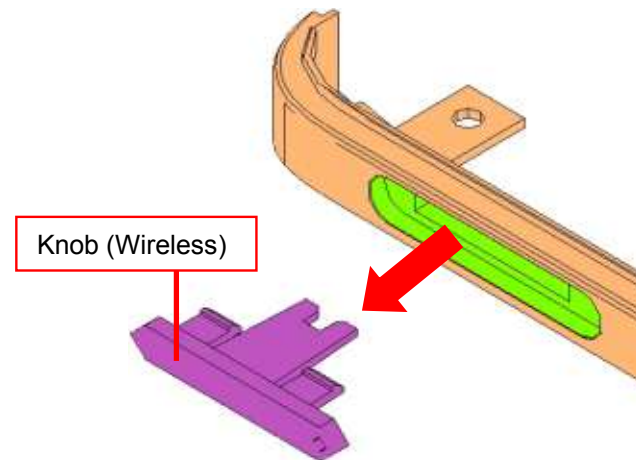
Remove the Cover (Housing Front) toward the front side.

12)



Disengage the detent (three places) from the backside of the Cover.







13)



Remove the Knob (Wireless) in the direction of the arrow.

# Update History

[**ADD**]---Addition    [**DEL**]---Deletion    [**CHG**]---Change    [**COR**]---Correction    [**MA**]---Model Addition

Date		Contents	Version No.
2005.12.22		[ADD] Attachment (Page 17) [COR] Procedure (Page 17)	1.10
2006.01.13		[MA] (Page 15) [CHG] Attachment (Page 22) [ADD] (Page 4(a), 24)/ Attachment (Page 4(a), 22, 23) [DEL] Attachment (Page 22)	2.00
2006.02.03		[MA] (Page 15) [ADD] Attachment (Page 21)	2.10
2006.02.16		[CHG] Screw (Page 8)	2.20
2006.04.14		[ADD] Attachment (Page 23)	3.00
2006.08.24		[MA] (Page 8) [DEL] Screw (Page 8) [ADD] Screw (Page 8)	4.00