

Chapter 1. Disassembly & Assembly Guide

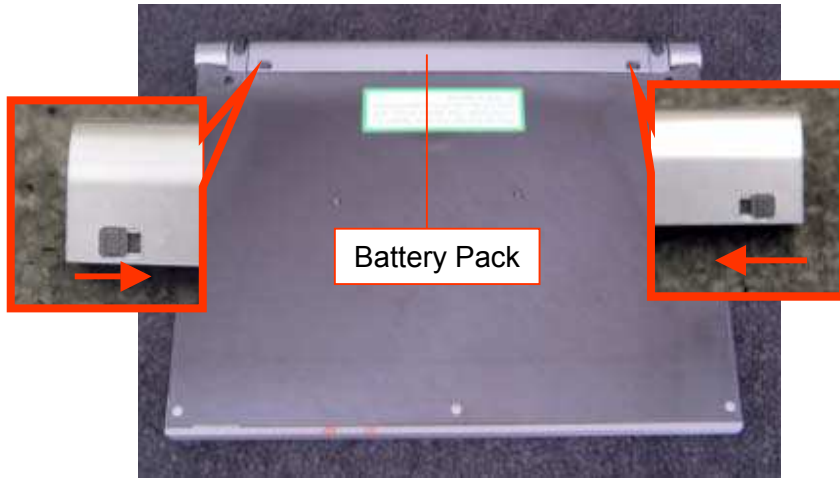
1-3. Disassembly & Assembly

- Main Section -

MS-1 Main Section Disassembly

Battery Pack

1)



Slide the Levers toward the center.

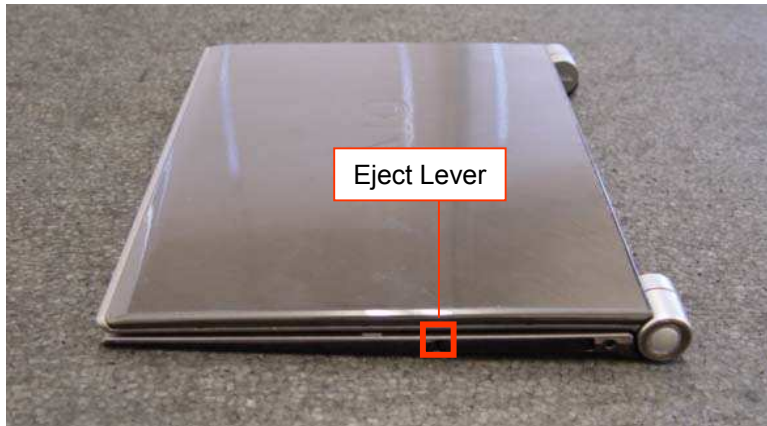
2)



In the state 1), pull the Battery Pack in the arrow direction.

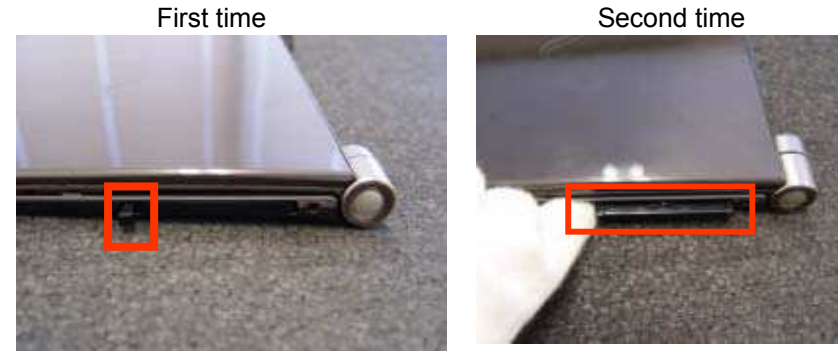
Dummy Card

1)



Put the Main Section with its left side toward you.

2)



Push the Eject Lever twice.

3)

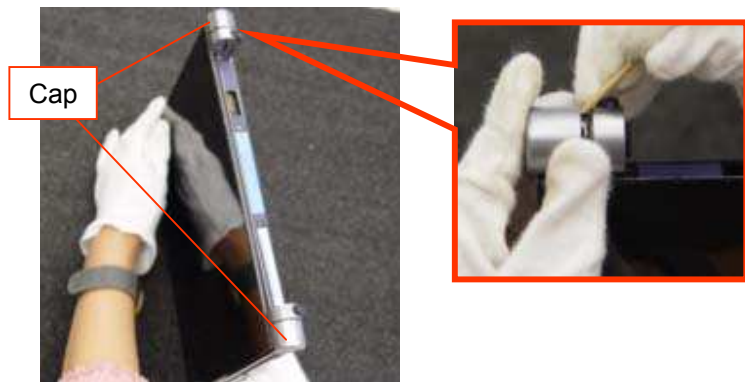


Pull out the Dummy Card.

Cap (Hinge)

* If not disassembling the LCD Section, this work is not required.

1)



Widen the Detents (at three locations) outward with a bamboo skewer to remove.

2)



Remove the Cap (at two locations) by sliding as it is outward.

Remarks

DC Jack side



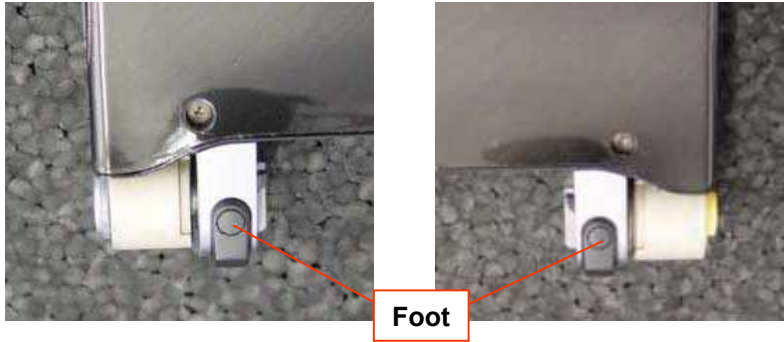
Power Button side



<Detent positions>

Stopper (Hinge)

1)



Foot

Peel off the Foot (at two locations).

2)

Screw : B4



Screw:

~~1st Model - B5 (Special Screw)~~ ⚠

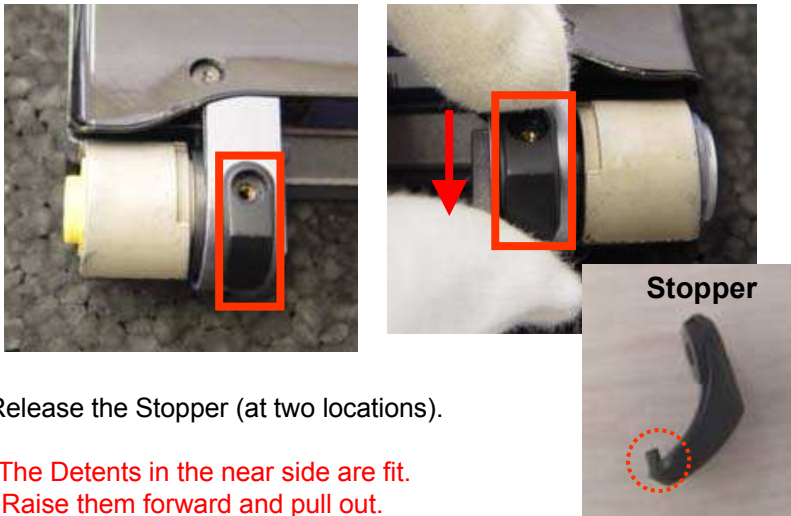
B4 ⚠ [MA] ⚠ [CHG]



Remove the Screws (two locations).

~~⚠ *In the 1st Models, the types of Screw differ between the left and the right.~~

3)



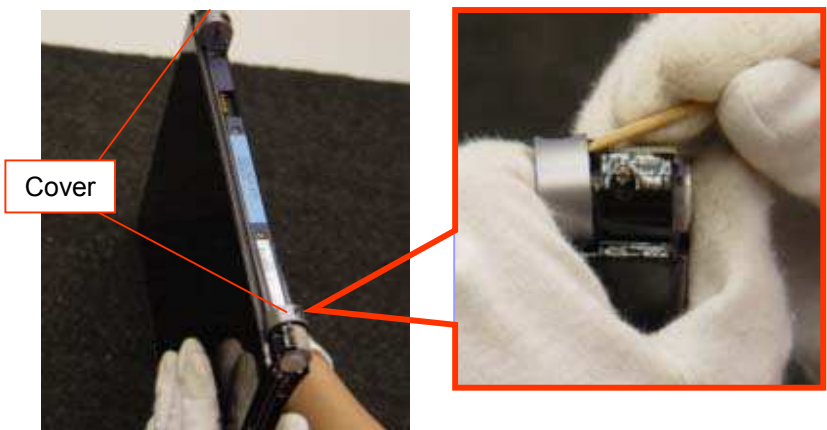
Stopper

Release the Stopper (at two locations).

*The Detents in the near side are fit.
Raise them forward and pull out.

Cover (Hinge)

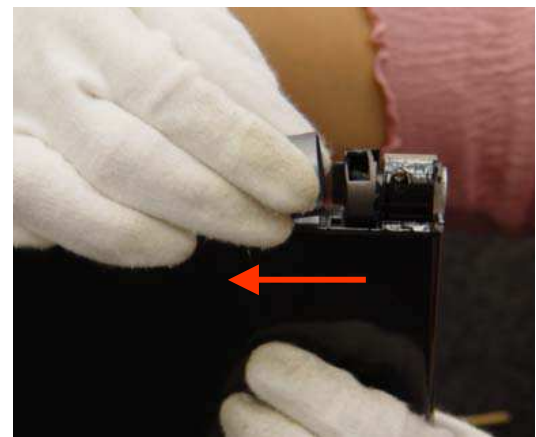
1)



Widen the Detents (at two locations) with a bamboo skewer outward to remove.

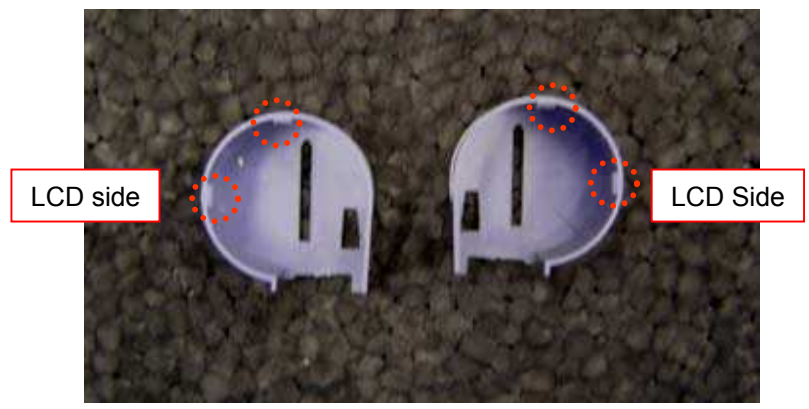
** The Covers may be easily broken. Work with care.*

2)



In the state 1), slide the Cover (two locations) to remove.

Remarks

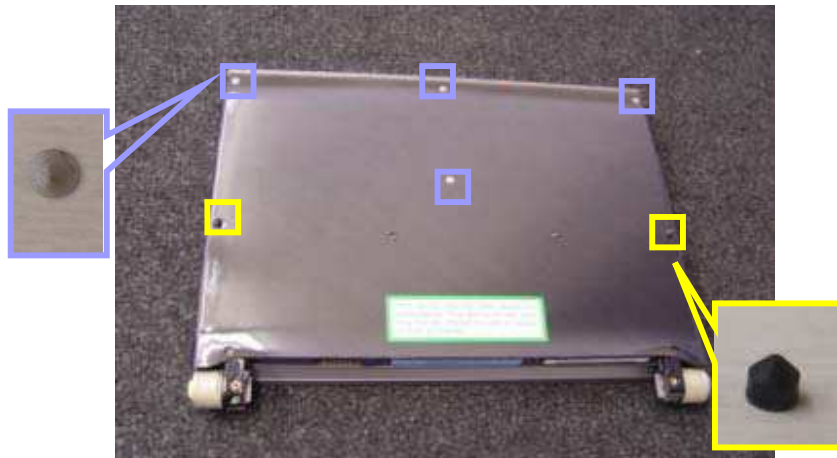


Detent positions

Housing (Bottom)-1

* Also refer to the next page.

1)



Peel off the Foot (at six locations).

* Give a care not to damage the Housing (Bottom).

* Two kinds of Foot are provided.

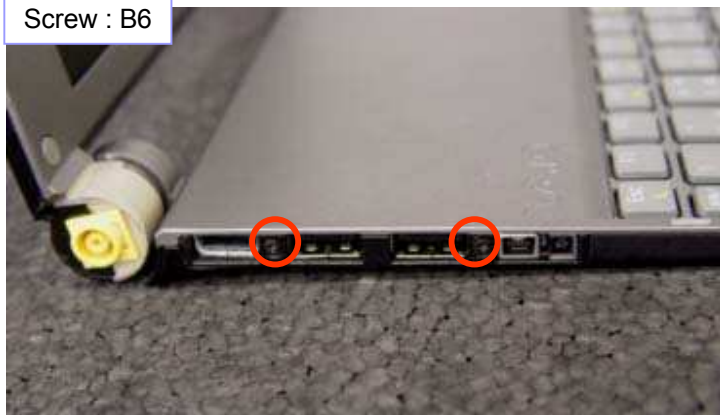
2)



Open the Main Section till the LCD Section and the Bottom Section are in the right angle.

3)

Screw : B6



4)

Screw : B4



Remove the Screws (two locations) from the left side of the Main Section.

Remove the Screws (two locations) from the back face of the Main Section.

Housing (Bottom)-2

5)



Place the Main Section on the work desk as shown in the picture.
 *Work with a great care not to fall the Main Section or to damage the LCD!

6)

Screw : B5 (X4) , B3 (X4), B4(X2), B2 (X1)

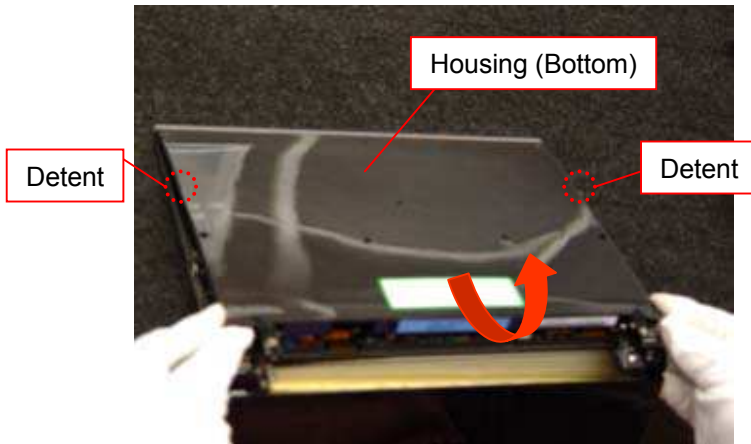


Remove the eleven Screws from the bottom of the Main Section.



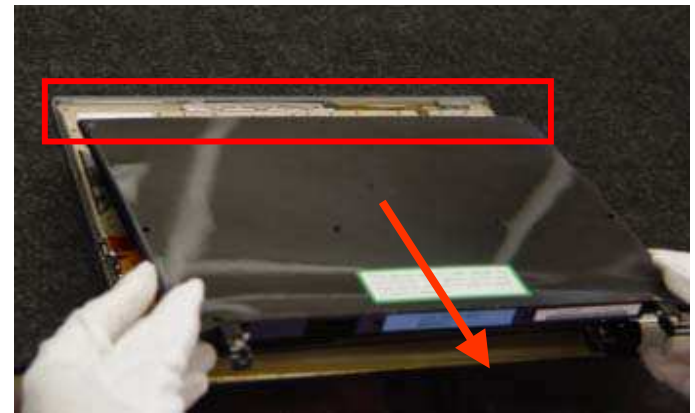
* The Screws B3 and B5 are the special screws.

7)



Raise the Housing (Bottom) at its near side.
 *Release the Detents (two locations) by pushing the Palmrest lightly toward the center.

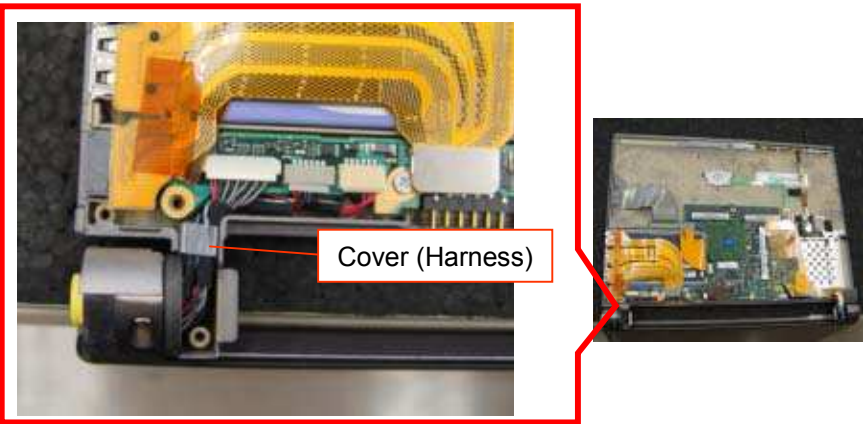
8)



Remove the Housing (Bottom) by pulling it toward you.
 * The back side is inserted in the Palmrest.

LCD Section

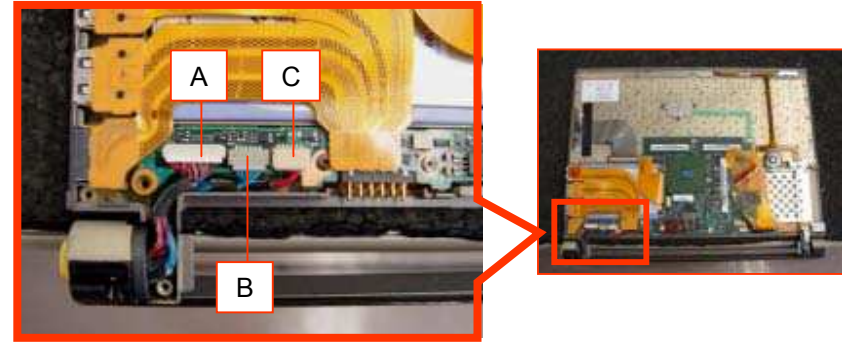
1)



Remove the Cover (one location).

2)

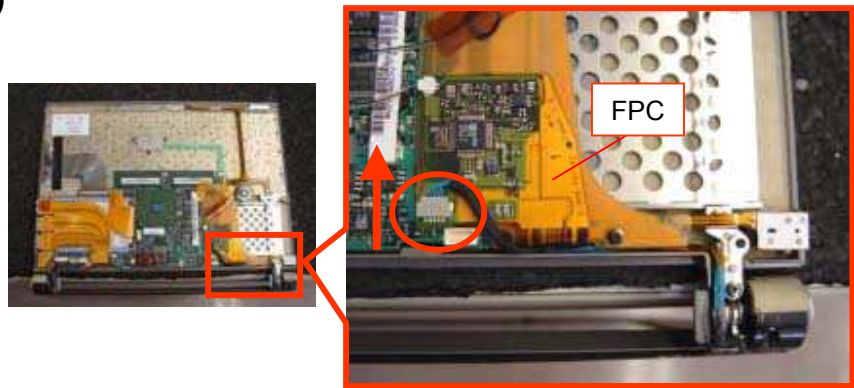
(A: LCD Harness/ B: Harness (INV) / C: Harness (DC))



Disconnect the Harness (at three locations) in the order from A to C.

* Take out the Harness from under the Mother Board and pull it to remove.

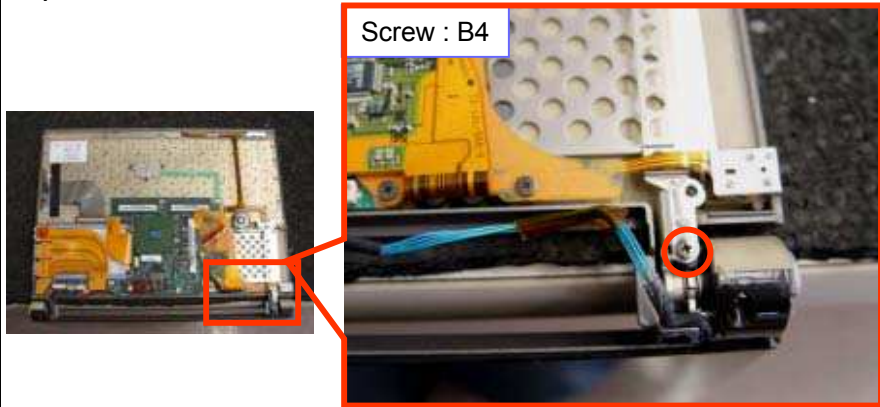
3)



Disconnect the Harness (PWR) (one location).

*Take out the Harness from under the FPC and pull it in the arrow direction.

4)



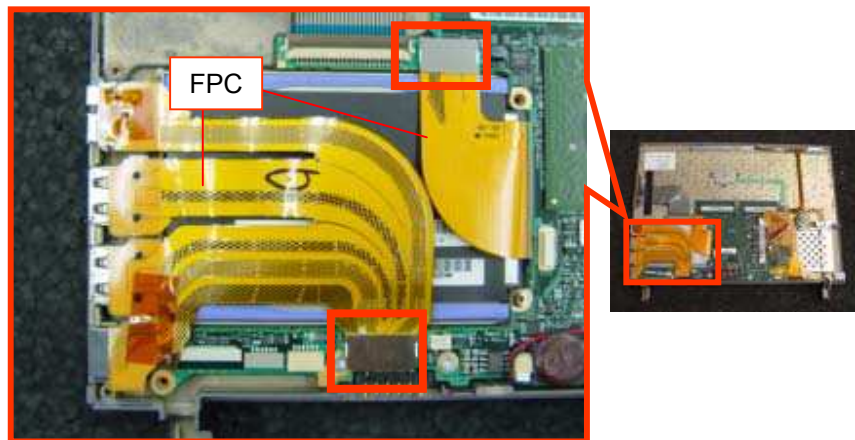
Remove the one Screw and remove the LCD Section.

*Work with great care not to damage the LCD Section!

* The Protect (Harness) may be displaced from the Hinge (Left).

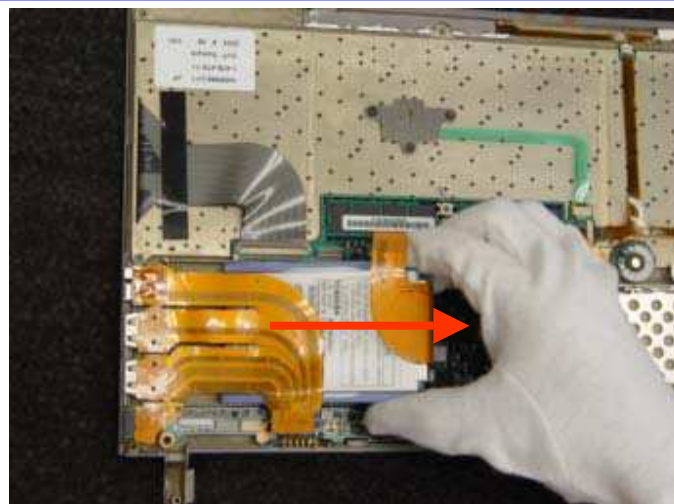
HDD

1)



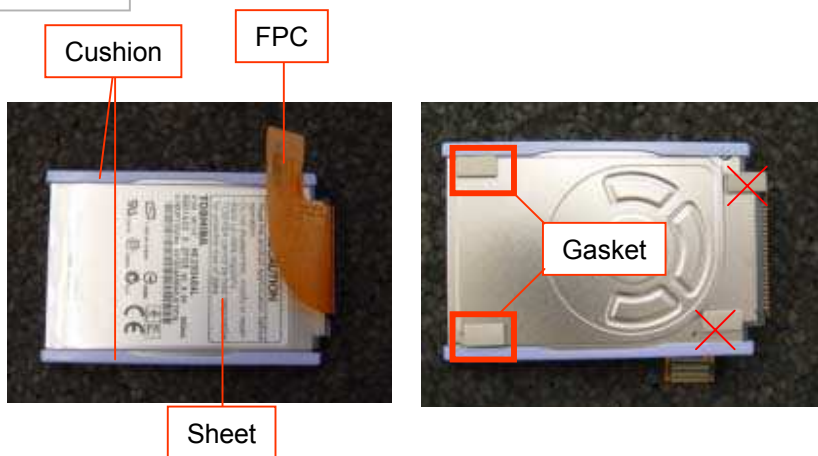
Disconnect the FPC (at two locations).
 * Pull it upward to disconnect.

2)



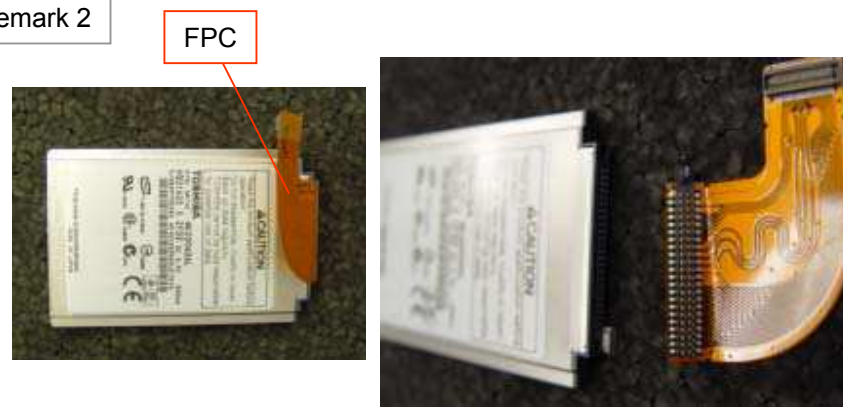
Pull the HDD in the arrow direction to remove.

Remark 1



The above parts are installed on the HDD.

Remark 2



* Be careful not to bend the Pin when disconnecting the FPC.

PC Card Connector

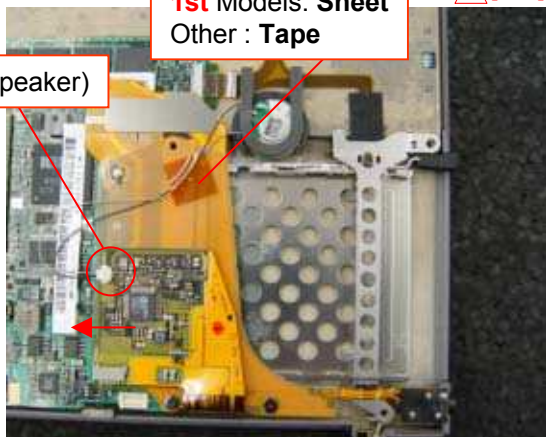
1)

1st Model

1st Models: Sheet
Other : Tape



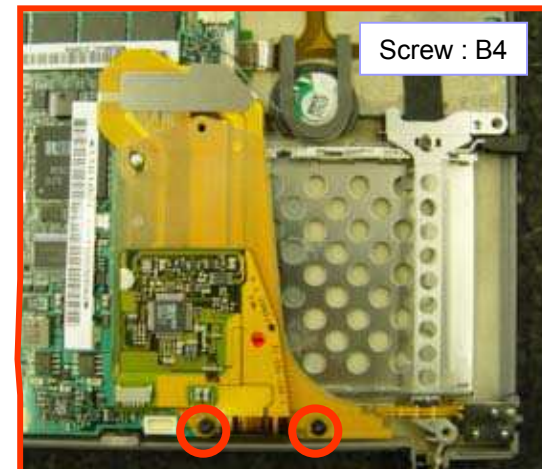
Harness (Speaker)



Peel off the attachment (one location) and disconnect the Harness (one location).

2)

Screw : B4



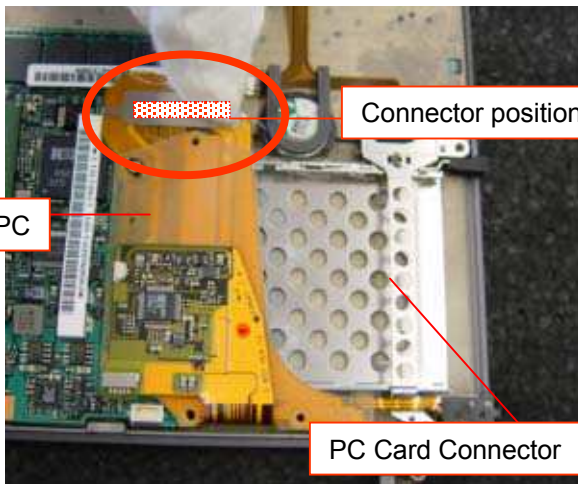
Remove the two Screws.

3)



Connector positions

FPC

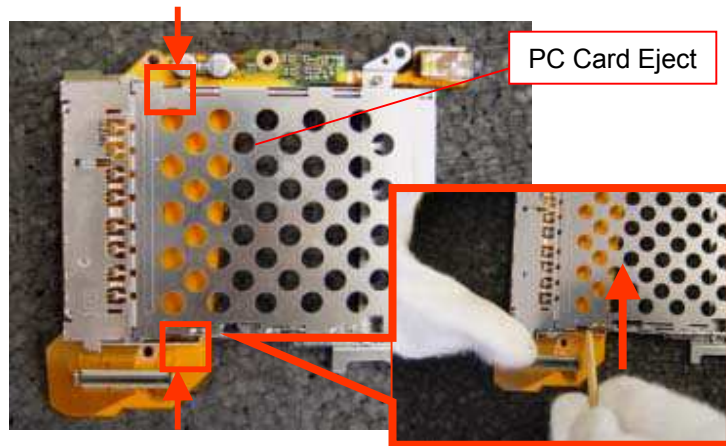


PC Card Connector

Disconnect the FPC and then remove the PC Card Connector.
Pull the Connector Section upward to disconnect.

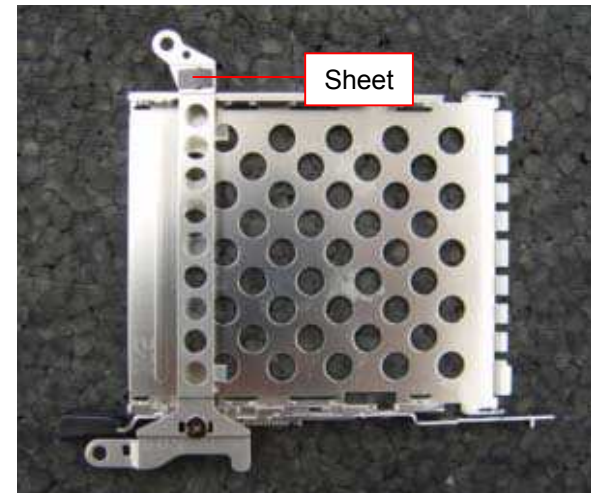
PC Card Connector Block

1)



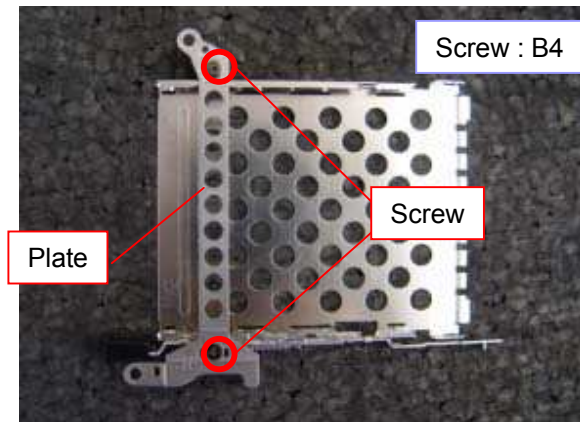
Push the Detents (two locations) in the arrow direction and remove the PC Card Eject.

2)



Peel off the Sheet (one location).

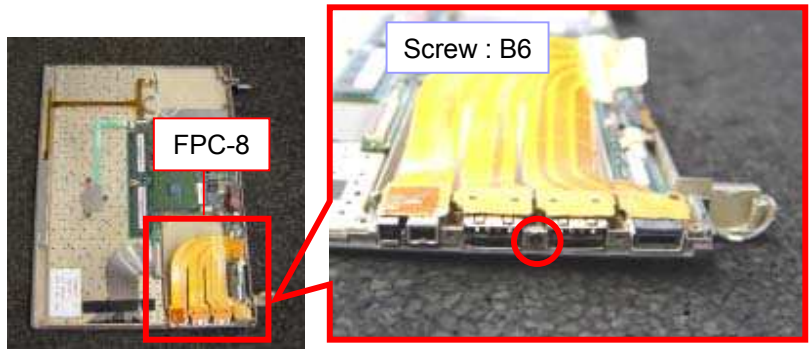
3)



Remove the two Screws and remove the Plate.

FPC-8

1)

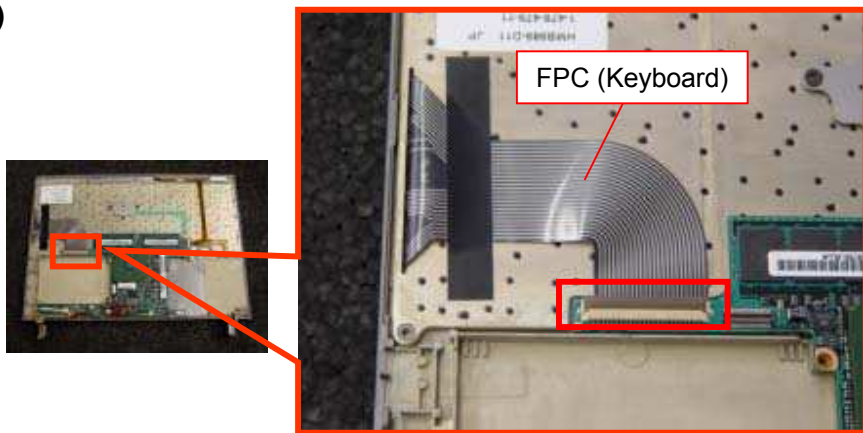


Remove the Screws (at one location) and remove the FPC.

Mother Board-1

* Also refer to the next page.

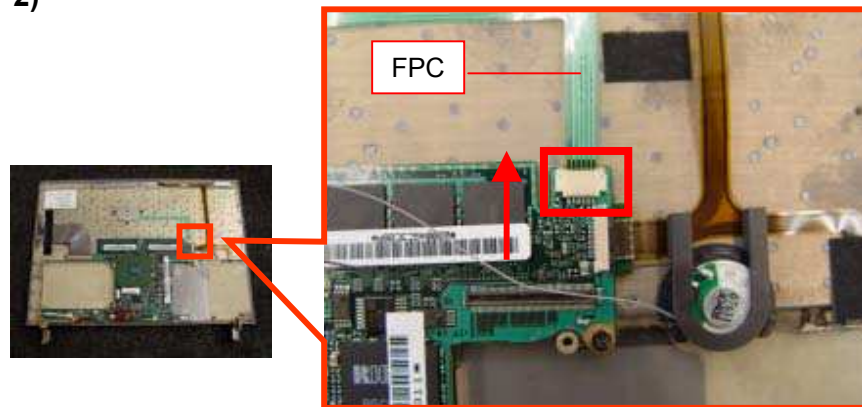
1)



Disconnect the FPC (Keyboard).

* Raise the lock (brown color) of the Connector forward to release the lock.

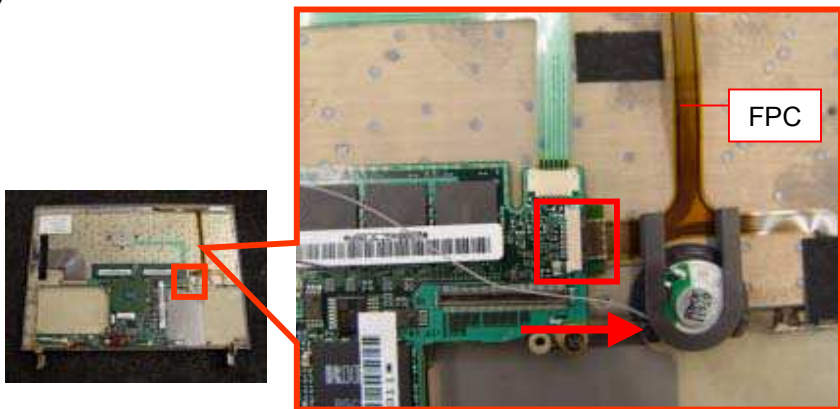
2)



Disconnect the FPC (Pointing Device).

* Pull the FPC as it is in the arrow direction.

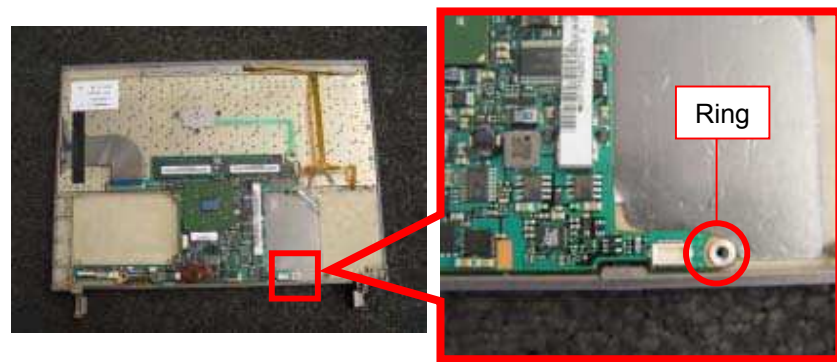
3)



Disconnect the FPC (LED).

* Slide the lock (black color) of the Connector in the arrow direction to release the lock.

4)

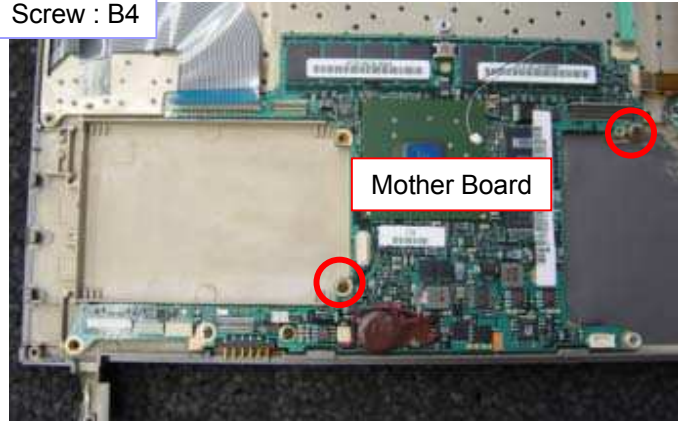


Remove the Ring (one location).

Mother Board-2

5)

Screw : B4



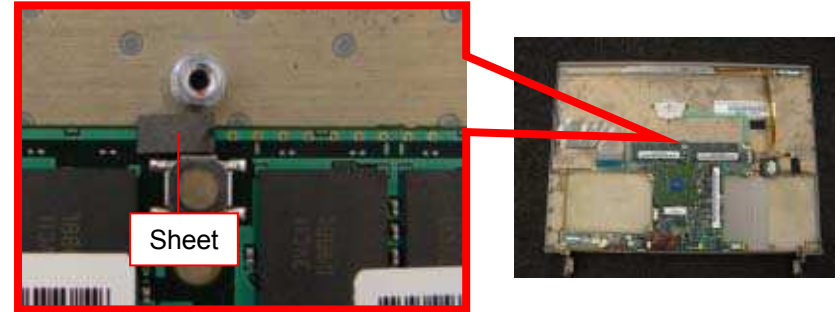
Mother Board

Remove the two Screws and remove the Mother Board.

Remarks

1st Model

⚠ [MA]



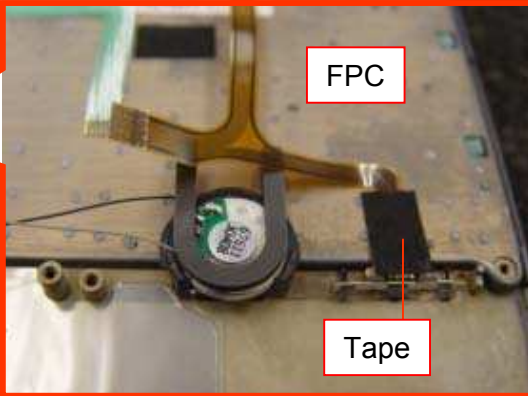
Sheet

* Sheet may possibly be peeled off.
Do not lose the Sheet.

FPC

1)

FPC



Peel off the Tape (at one location).

2)

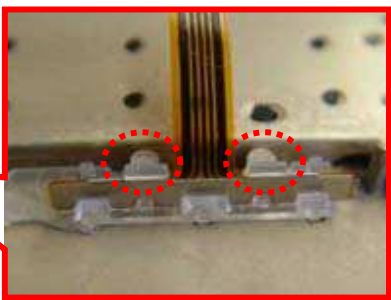
~~From the 2nd Models~~

⚠ [MA] ⚠ [ADD]



Peel off the Tape (at one location).

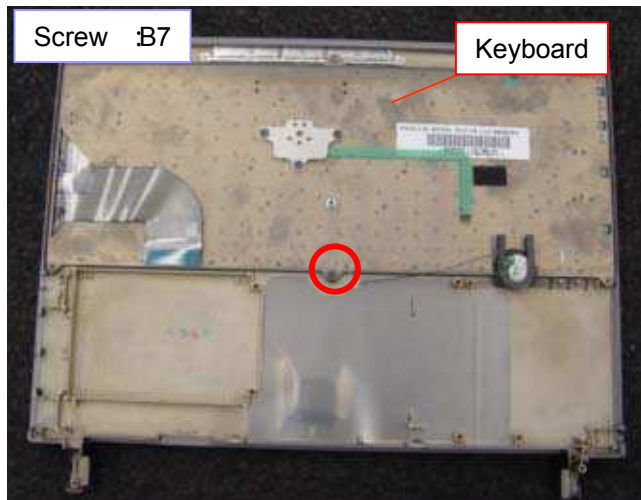
3)



Release the Detents (at two locations) and disconnect the FPC.

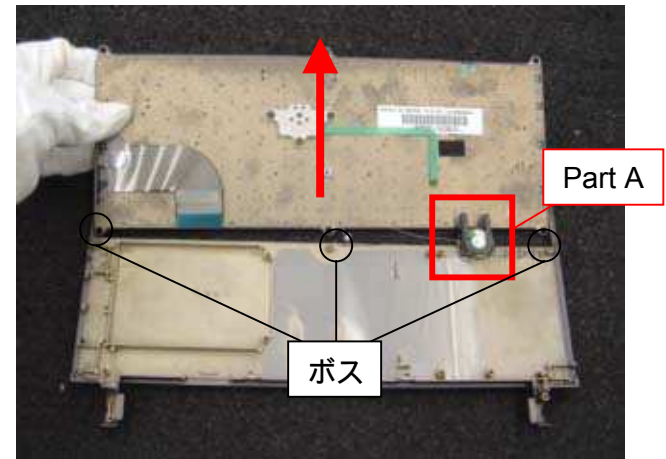
Keyboard

1)



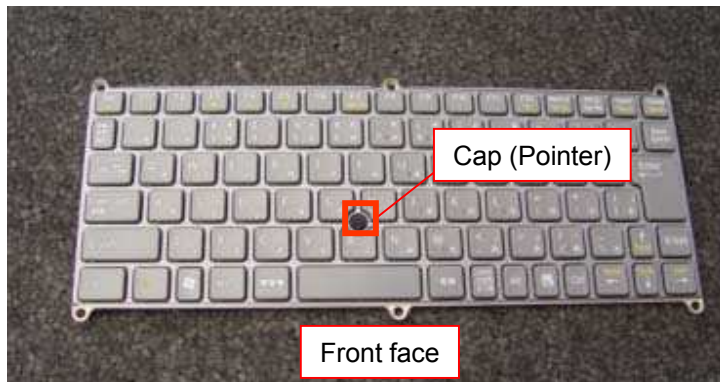
Remove the Screw (one location).

2)



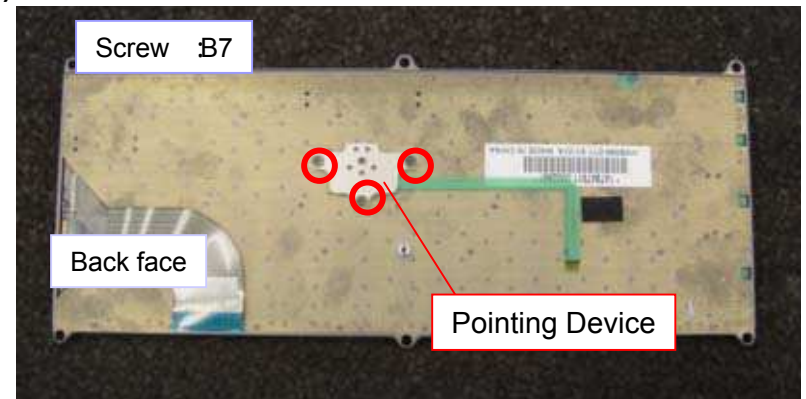
Remove the Keyboard while paying attention to the part A.
 * It may get hung up on the Boss.

3)



Remove the Cap (one location).

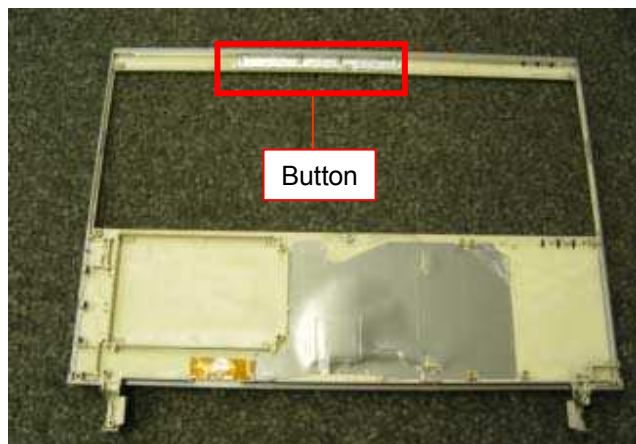
4)



Remove the three Screws and remove the Pointing Device (one location).

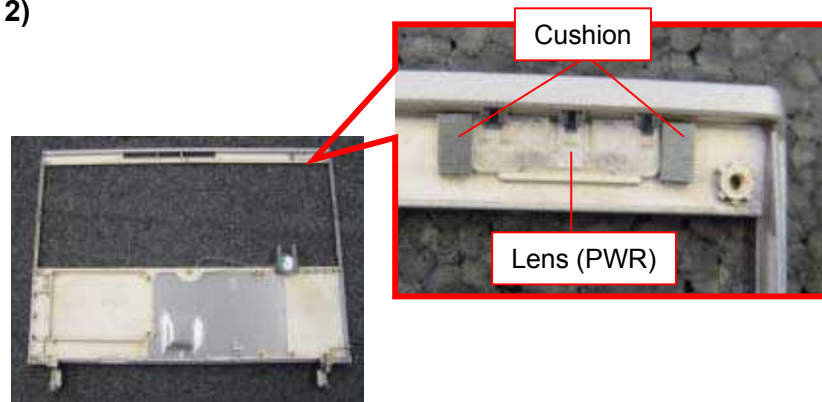
Parts of the Palmrest

1)



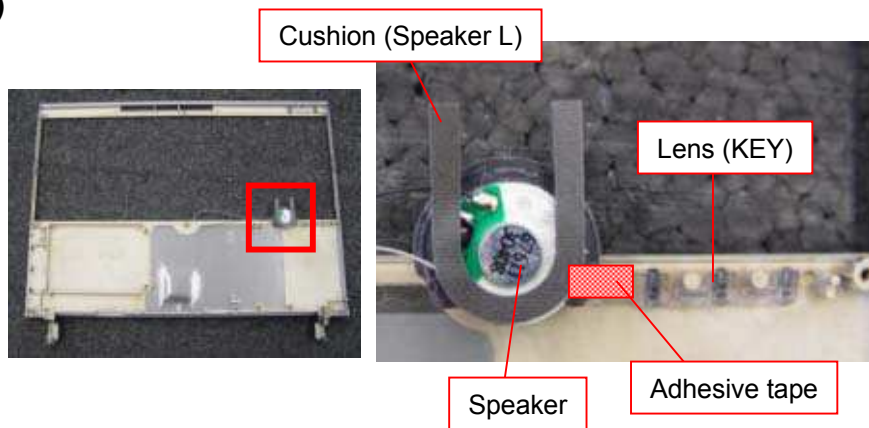
Remove the Button (one location).

2)



Remove the Lens (one location) and the Cushion (two locations).

3)





Remove the Lens (one location), Cushion (one location) and the Speaker (one location).

* They are secured with adhesive tape.

Update History

[ADD]---Addition [DEL]---Deletion [CHG]---Change [COR]---Correction [MA]---Model Addition

Date		Contents	Version No.
2004.06.04		[MA] (Page 5, Page11, Page15, Page16)	2.00
2004.12.22		[CHG] Screw (Page 5) [ADD] Parts (Page 16)	2.30