

Subject: C5-501 Service Manual

Part No.: 99.K6801.001

Rev.: 0

Project Code: 99.K6801.001

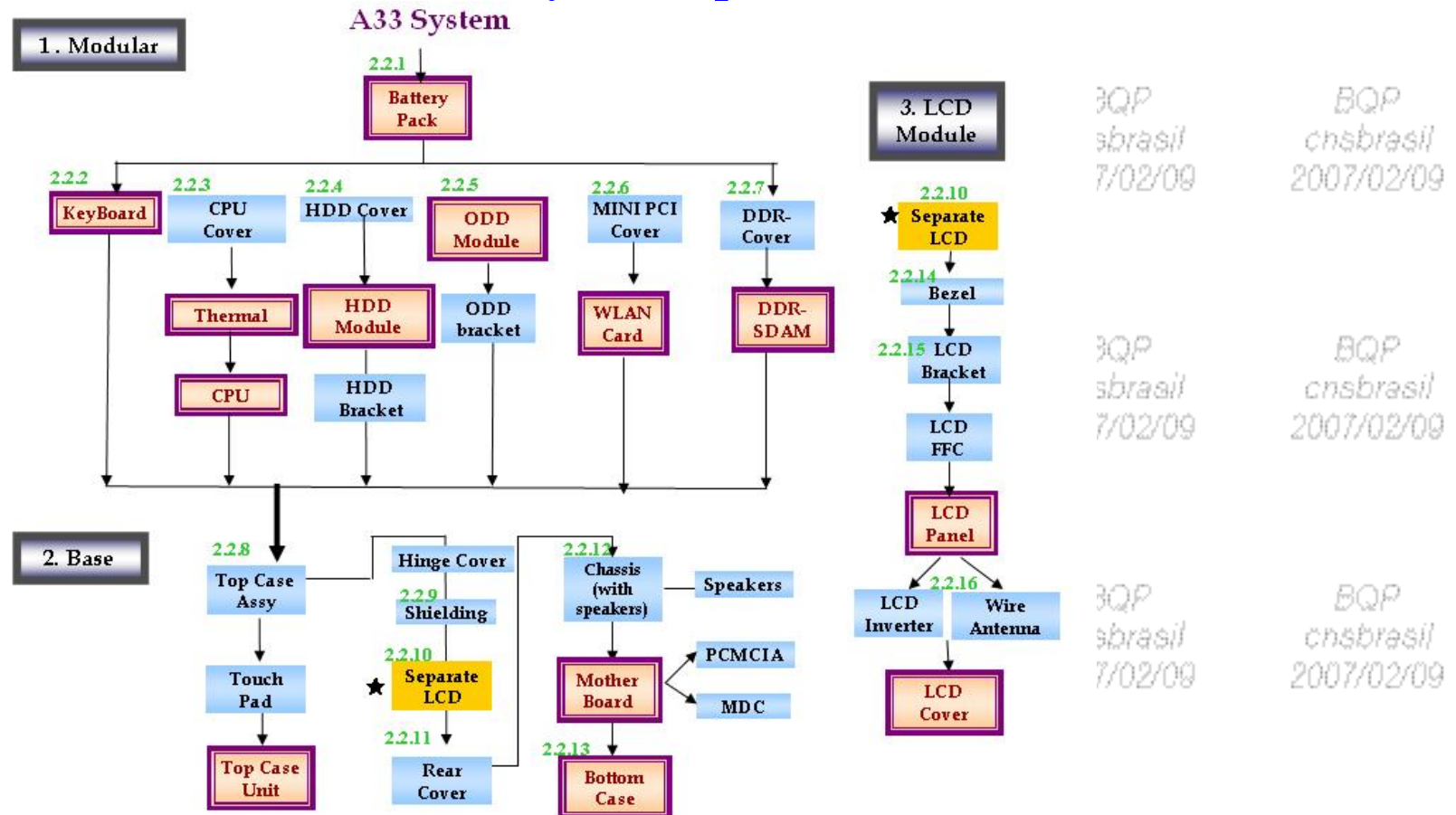
Doc. No: 99.K6801.001-C5-501-001

Page 1 of 35

Model Name: DHA300

Component Part. No.: NA

### A33 Disassembly Description



Subject: C5-501 Service Manual

Part No.: 99.K6801.001

Rev.: 0

Doc. No. 99.K6801.001-C5-501-001

Project Code: 99.K6801.001

Component Part. No.: NA

Page 2 of 35

Model Name: DHA300

### 1. Description

Joybook A33 Disassembly can be divided into three main parts. To be more efficient, it is better to get to know more about disassembly process.

#### *You need the following tools:*

- Wiha PicoFinish Slotted Screwdriver  
(Professional Suggestion)



**260P** Slotted screwdriver.

- Crisscross screwdriver, 0x50mm (十字螺絲起子, 0x50mm)
- Crisscross screwdriver, 1x60mm (十字螺絲起子, 1x60mm)
- Flat screwdriver(一字螺絲起子)
- Snipe nose pliers
- Tweezers
- Soft Cushion
- Screws classification box
- Golden type (金色膠帶)
- Screw Torque Document

#### Note :

1. Please turn off Joybook and remove battery before disassemble.
2. The screw for different components may vary with size.
3. During disassemble process, collect the screws together with correspondent parts for avoid mismatch when assemble.
4. Put a soft pad between repair desk and Joybook to prevent scratch during repair.
5. Void to scrape machine appearance during disassembly.

Subject: C5-501 Service Manual

Part No.: 99.K6801.001

Rev.: 0

Project Code: 99.K6801.001

Doc. No. 99.K6801.001-C5-501-001

Page 3 of 35

Component Part. No.: NA

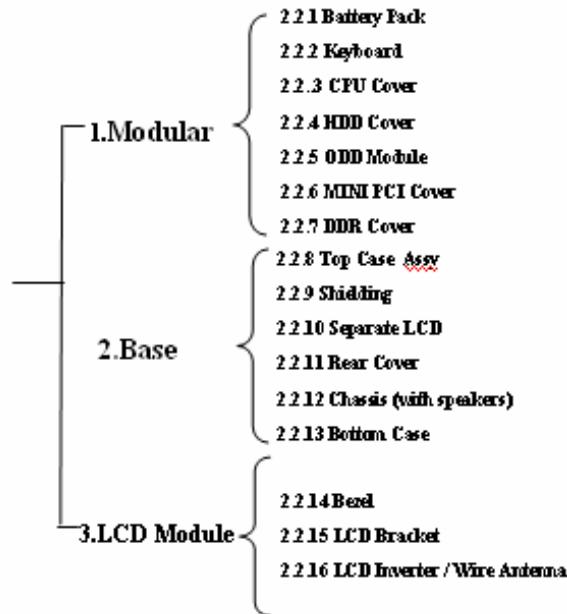
Model Name: DHA300

### 2.1 System Disassembly

The section discusses at length each major component for disassembly/reassembly and show corresponding illustrations. Use the “disassembly flow chart file” to determine the disassembly sequence for removing components from the notebook.

**NOTE:** Before you start to install/replace these modules, disconnect all peripheral devices and make sure the notebook is not turned on or connected to AC power.

A33



Subject: C5-501 Service Manual

Part No.: 99.K6801.001

Rev.: 0

Doc. No. 99.K6801.001-C5-501-001

Project Code: 99.K6801.001

Component Part. No.: NA

Page 4 of 35

Model Name: DHA300

### 2.2.1 Battery Pack

1. Carefully put the notebook upside down.
2. Slide the two release lever outwards to the “unlock” (🔒) position (❶), while take the battery pack out of the compartment (❷). (Figure 2-1)



Battery Pack



Subject: C5-501 Service Manual

Part No.: 99.K6801.001

Rev.: 0

Project Code: 99.K6801.001

Doc. No. 99.K6801.001-C5-501-001

Component Part. No.: NA

Page 5 of 35

Model Name: DHA300

### 2.2.2 Keyboard

1. Remove the battery pack. (Refer to section 2.2.1 Disassembly)
2. Open the top cover.
3. Loosen the **5 latches** locking the keyboard. (Figure 2-2)
4. Slightly lift up the keyboard and **disconnect 2 cable** from the mother board, then separate the keyboard. (Figure 2-3)

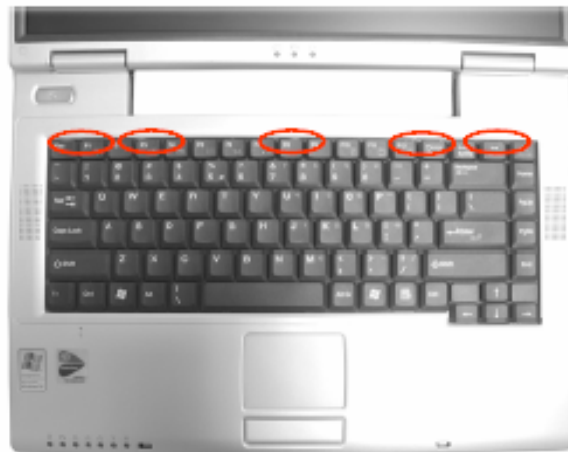


Figure 2-2 Loosen the four latches

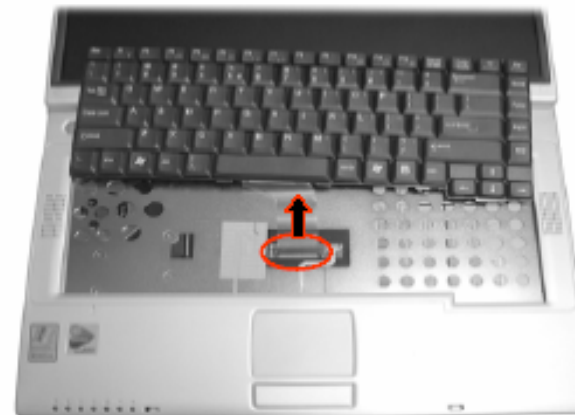


Figure 2-3 Disconnect the cable

Subject: C5-501 Service Manual

Part No.: 99.K6801.001

Rev.: 0

Doc. No. 99.K6801.001-C5-501-001

Project Code: 99.K6801.001

Component Part. No.: NA

Page 6 of 35

Model Name: DHA300

### 2.2.3 CPU Cover/ Thermal Module / CPU

1. Remove the battery pack. (Refer to section 2.2.1 Disassembly)
2. Remove 7 fastening the heatsink cover. (Figure 2-4)
3. Remove 4 spring screws that secure the heatsink upon the CPU and disconnect 1 fan's power cord from system board. (Figure 2-5)



Figure 2-4 Remove three screws



Figure 2-5 Free the heatsink



Subject: C5-501 Service Manual

Part No.: 99.K6801.001

Rev.: 0

Project Code: 99.K6801.001

Doc. No. 99.K6801.001-C5-501-001

Component Part. No.: NA

Page 7 of 35

Model Name: DHA300

4. To remove the existing CPU, Loosen the screw by a flat screwdriver,upraise the CPU socket to unlock the CPU . (Figure 2-6)

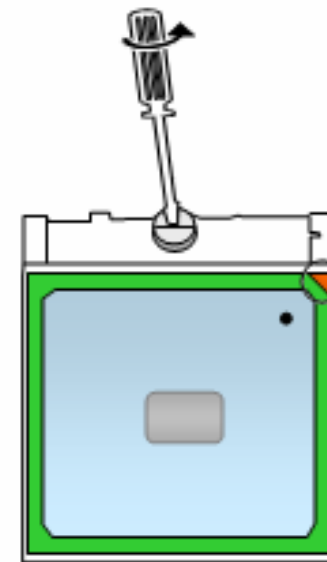


Figure 2-6 Remove the CPU

Subject: C5-501 Service Manual

Part No.: 99.K6801.001

Rev.: 0

Project Code: 99.K6801.001

Doc. No. 99.K6801.001-C5-501-001

Page 8 of 35

Model Name: DHA300

Component Part. No.: NA

### 2.2.4 HDD Module

1. Carefully put the notebook upside down. Remove the battery pack. (Refer to section 2.2.1 Disassembly)
2. Remove **2** fastening the HDD cover. (Figure 2-7)
3. Remove the **1** and slide the HDD module out of the compartment. (Figure 2-8)



Figure 2-7 Remove the HDD cover

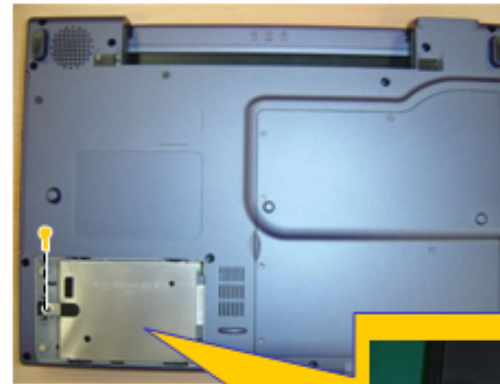


Figure 2-8 Remove HDD module





Subject: C5-501 Service Manual

Part No.: 99.K6801.001

Rev.: 0

Doc. No. 99.K6801.001-C5-501-001

Project Code: 99.K6801.001

Component Part. No.: NA

Page 9 of 35

Model Name: DHA300

### 4. Remove 4 to separate the hard disk drive from the HDD case. (Figure 2-9)

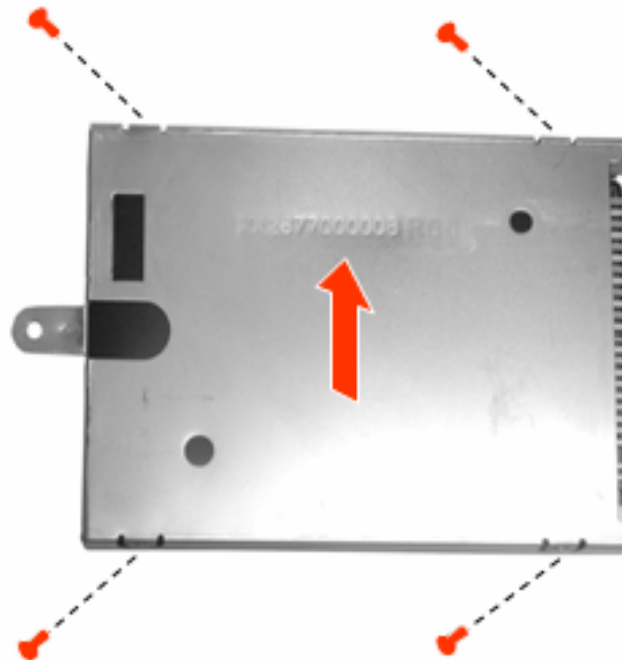


Figure 2-9 Remove hard disk drive

Subject: C5-501 Service Manual

Part No.: 99.K6801.001

Rev.: 0

Doc. No. 99.K6801.001-C5-501-001

Project Code: 99.K6801.001

Component Part. No.: NA

Page 10 of 35

Model Name: DHA300

### 2.2.5 ODD Module/ODD Bracket

1. Carefully put the notebook upside down. Remove the battery pack. (Refer to section 2.2.1 Disassembly)
2. Remove **1** screw fastening the ODD. (Figure 2-10)
3. Push firmly to release the tray. Then gently pull out the ODD by holding the tray that pops out. (Figure 2-11)



Figure 2-10 Remove one screw



Figure 2-11 Remove the CD/DVD-ROM drive

Subject: C5-501 Service Manual

Part No.: 99.K6801.001

Rev.: 0

Doc. No. 99.K6801.001-C5-501-001

Project Code: 99.K6801.001

Component Part. No.: NA

Page 11 of 35

Model Name: DHA300

### 4. Remove 2 fastening the ODD to release ODD bracket. (Figure 2-10)

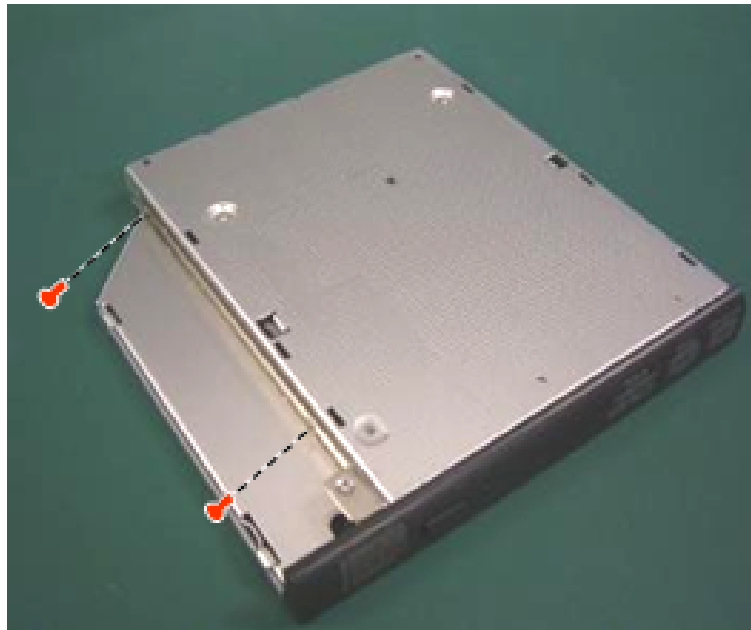


Figure 2-10 Remove 2 screw

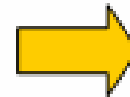


Figure 2-11 Remove the ODD bracket

Subject: C5-501 Service Manual

Part No.: 99.K6801.001

Rev.: 0

Project Code: 99.K6801.001

Doc. No. 99.K6801.001-C5-501-001

Page 12 of 35

Model Name: DHA300

Component Part No.: NA

### 2.2.6 MINI PCI Cover/ WLAN Card

1. Carefully put the notebook upside down. Remove the battery pack. (Refer to sections 2.2.1 Disassembly)
2. Remove the 7 screws fastening the Mini PCI Cover. (Figure 2-12)
3. Disconnect the wireless card's antennae first (❶). Then pull the retaining clips outwards (❷) and remove the wireless card (❸). (Figure 2-13)

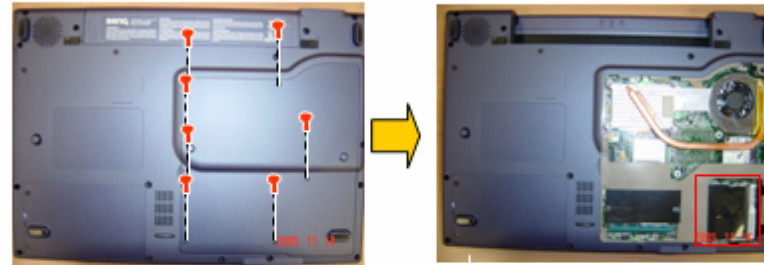


Figure 2-12 Remove MINI PCI Cover



**Antenna Color Description**  
Black connect to "AUX"

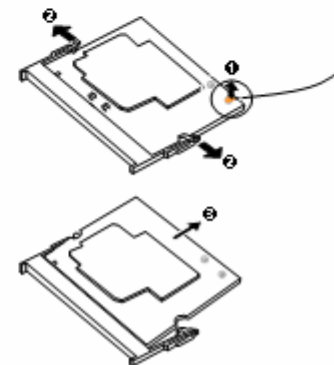


Figure 2-13 Remove the WLAN Card

Subject: C5-501 Service Manual

Part No.: 99.K6801.001

Rev.: 0

Project Code: 99.K6801.001

Doc. No. 99.K6801.001-C5-501-001

Page 13 of 35

Model Name: DHA300

Component Part. No.: NA

### 2.2.7 DDR Cover/ DDR-SDRAM

1. Carefully put the notebook upside down. And remove the battery pack. (See section 2.2.1 disassembly)
2. Remove **7** screws fastening the DDR compartment cover to access the SO-DIMM socket. (Figure 2-16)
3. Pull the retaining clips outwards (❶) and remove the SO-DIMM (❷). (Figure 2-17)

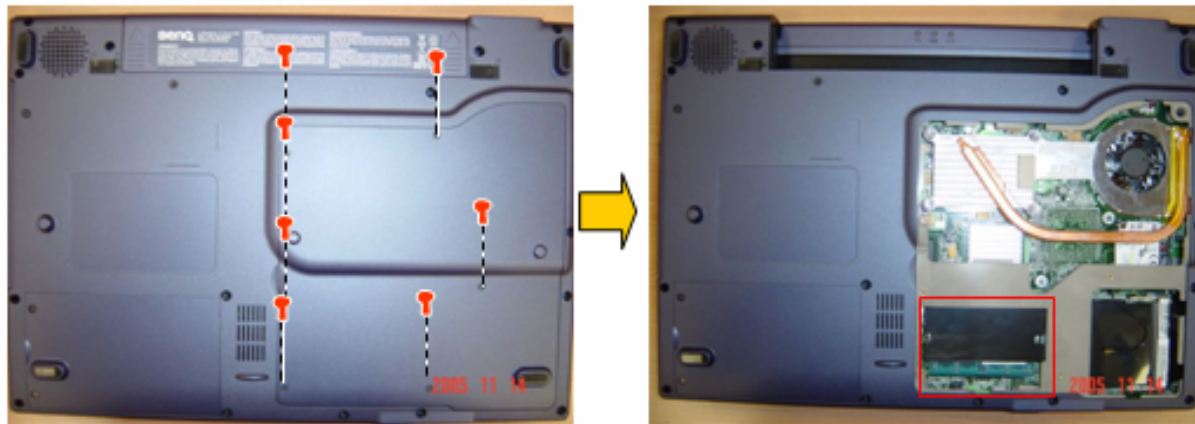


Figure 2-16 Remove the cover

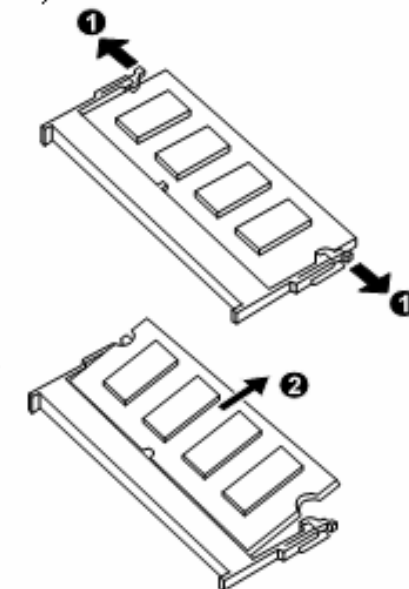


Figure 2-17 Remove the SO-DIMM

Subject: C5-501 Service Manual

Part No.: 99.K6801.001

Rev.: 0

Project Code: 99.K6801.001

Doc. No. 99.K6801.001-C5-501-001

Page 14 of 35

Model Name: DHA300

Component Part No.: NA

### 2.2.8 Top Case / Touch Pad

1. Refer to sections 2.2.1~ 2.2.7 Disassembly. Remove modular components.
2. Remove the 14, 1, 2 screws on the bottom of notebook. (Figure 2-18)
3. Remove the 2; 2 screws that secure the hinge cover. (Figure 2-19)
4. Remove the 2 screws and disconnect the touch pad's cable, then free the top cover (Figure 2-20)

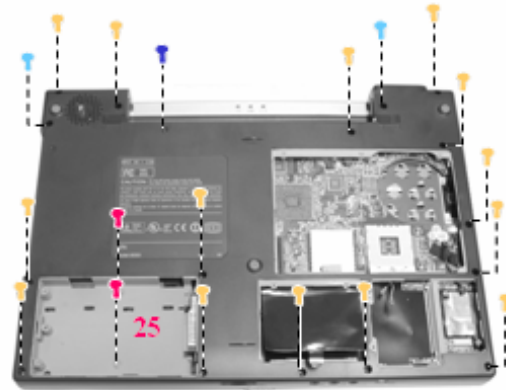


Figure 2-18 Remove screws

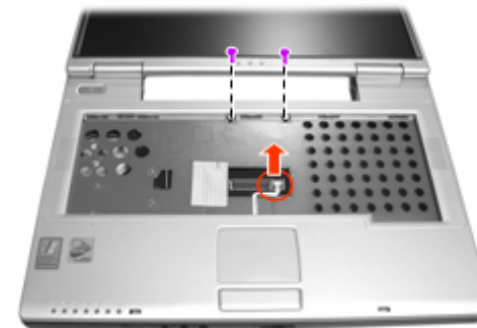


Figure 2-20 Free the Top Case



Figure 2-19 Remove four screws



Subject: C5-501 Service Manual

Part No.: 99.K6801.001

Rev.: 0

Doc. No. 99.K6801.001-C5-501-001

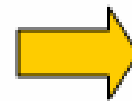
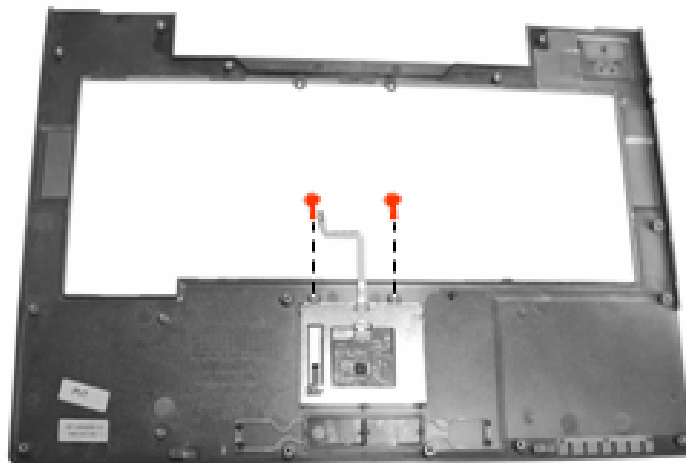
Project Code: 99.K6801.001

Component Part. No.: NA

Page 15 of 35

Model Name: DHA300

- 5. Reverse Top Case Assy.
- 6. Remove the 2 and free the touch pad. (Figure 2-32).



### Touch Pad - Board/ Case/ Cable

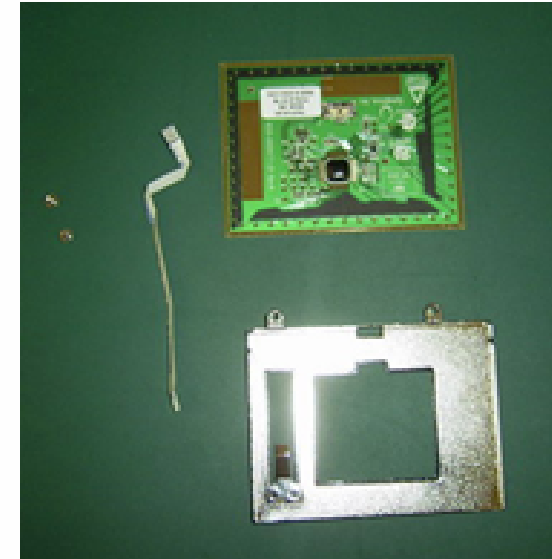


Figure 2-32 Remove the two screws

Subject: C5-501 Service Manual

Part No.: 99.K6801.001

Rev.: 0

Project Code: 99.K6801.001

Doc. No. 99.K6801.001-C5-501-001

Page 16 of 35

Component Part. No.: NA

Model Name: DHA300

### 2.2.9 Hinge Cover

1. Refer to 2.2.9 disassembly.
2. Remove the two hinge covers. (Figure 2-21)

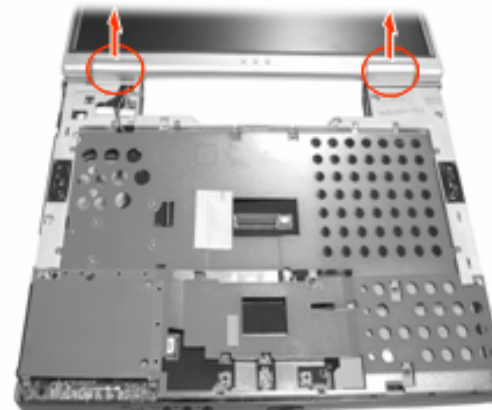


Figure 2-21 Remove the hinge covers



Left hinge cover



Right hinge cover



Subject: C5-501 Service Manual

Part No.: 99.K6801.001

Rev.: 0

Project Code: 99.K6801.001

Doc. No. 99.K6801.001-C5-501-001

Component Part. No.: NA

Page 17 of 35

Model Name: DHA300

### 2.2.9 Shielding

1. Refer to 2.2.9 Top Case Assy disassembly.
2. Remove the 8 screws. (Figure 2-23)

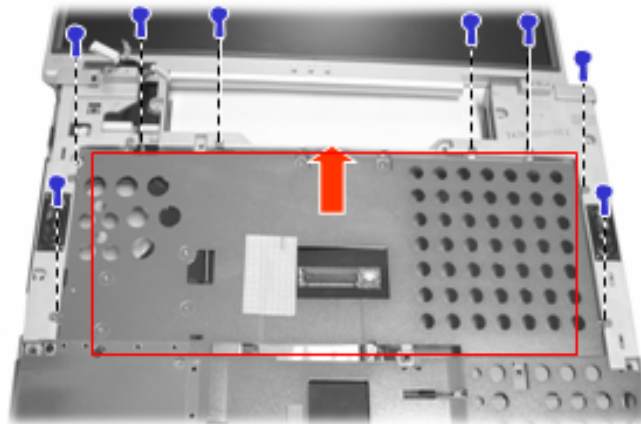


Figure 2-22 Remove the four screws and Disconnect the two cables



### Shielding

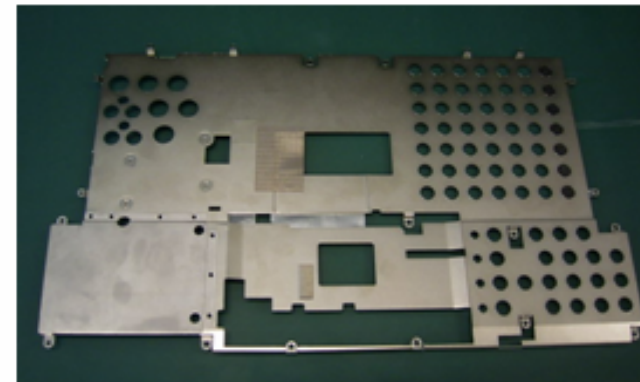


Figure 2-23 Remove the eight screws

Subject: C5-501 Service Manual

Part No.: 99.K6801.001

Rev.: 0

Project Code: 99.K6801.001

Doc. No. 99.K6801.001-C5-501-001

Component Part. No.: NA

Page 18 of 35

Model Name: DHA300

### 2.2.10 Separate LCD Module

1. Disconnect the 2 cables and remove the 4 screws. (Figure 2-22)
2. Carefully pull the antenna wires out. Then you can lift it up the LCD ASSY from base unit. (Figure 2-24)

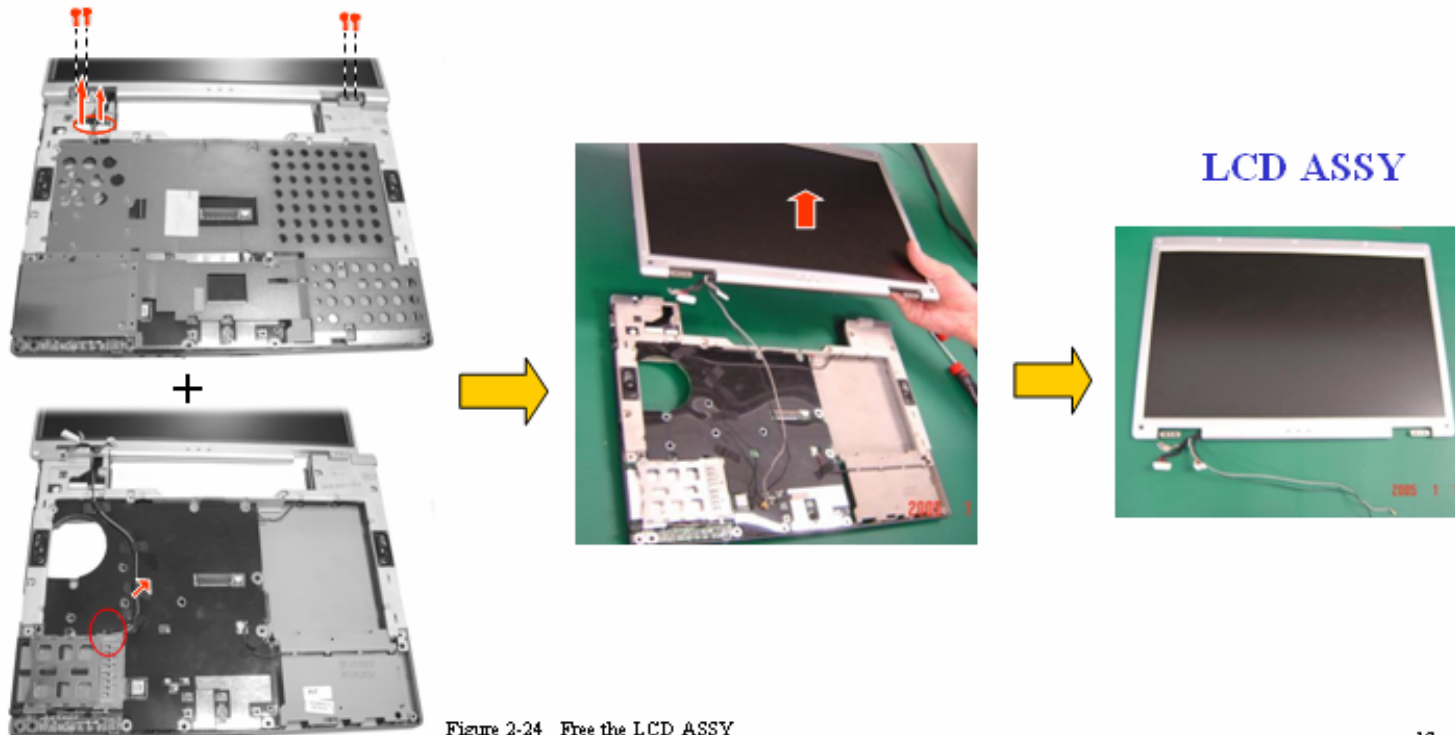


Figure 2-24 Free the LCD ASSY

Subject: C5-501 Service Manual

Part No.: 99.K6801.001

Rev.: 0

Project Code: 99.K6801.001

Doc. No. 99.K6801.001-C5-501-001

Page 19 of 35

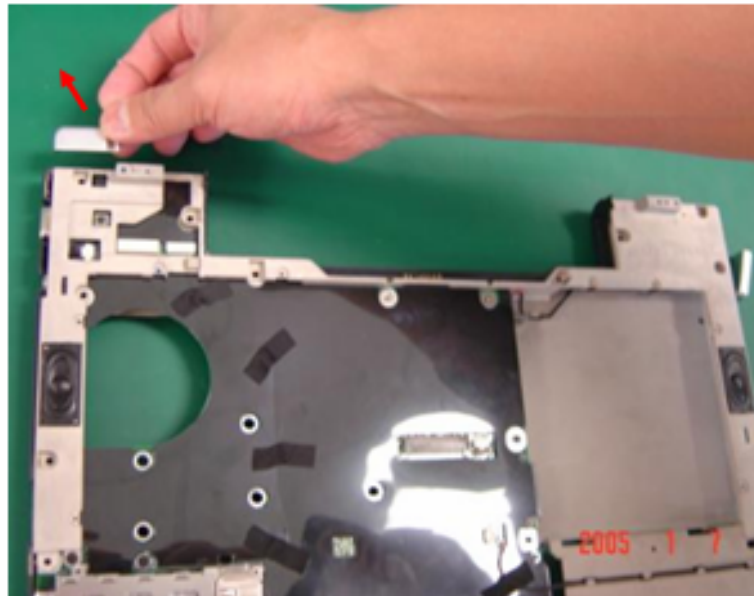
Model Name: DHA300

Component Part. No.: NA

### 2.2.11 Rear Cover

Refer to 2.2.12 disassembly.

You can get Left and right Rear Cover easily by hand. (Figure 2-25)



L/ R Rear Cover

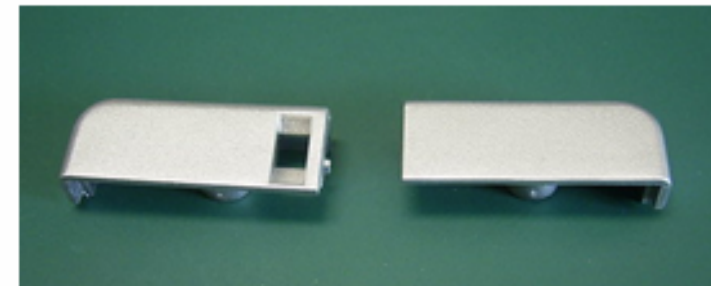


Figure 2-25 Remove the rear cover

Subject: C5-501 Service Manual

Part No.: 99.K6801.001

Rev.: 0

Project Code: 99.K6801.001

Doc. No. 99.K6801.001-C5-501-001

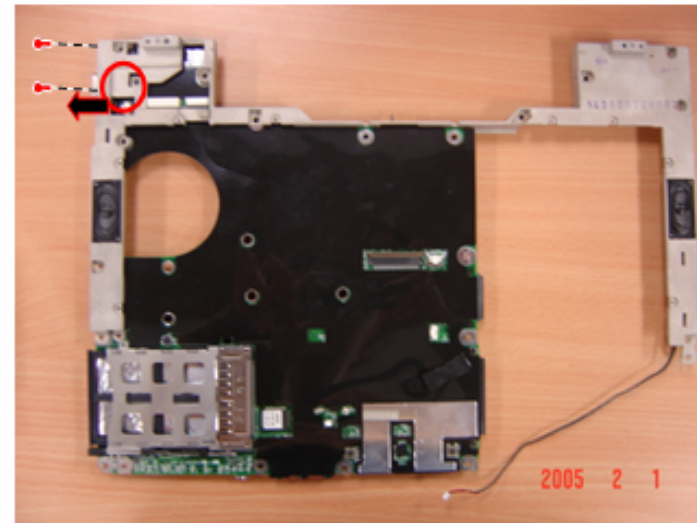
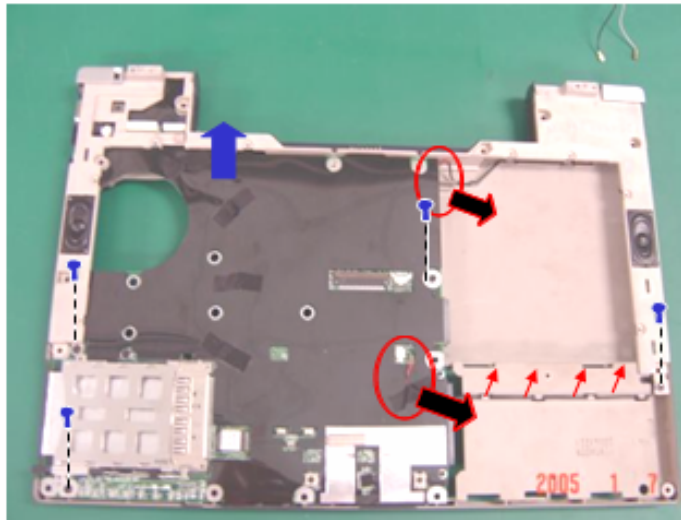
Component Part. No.: NA

Page 20 of 35

Model Name: DHA300

### 2.2.12 Chassis / Speakers/ Modem Card / Mother Board / PCMCIA

1. Refer to sections 2.2.1 Disassembly.
2. Remove the **4** that secure the system board and disconnect the two speaker's cables. Then lift it up from the bottom case. (Figure 2-30)
3. Disconnect the one speaker's cables from the system board and remove **2**, Then separate the bracket and free the system board. (Figure 2-31)



Subject: C5-501 Service Manual

Part No.: 99.K6801.001

Rev.: 0

Doc. No. 99.K6801.001-C5-501-001

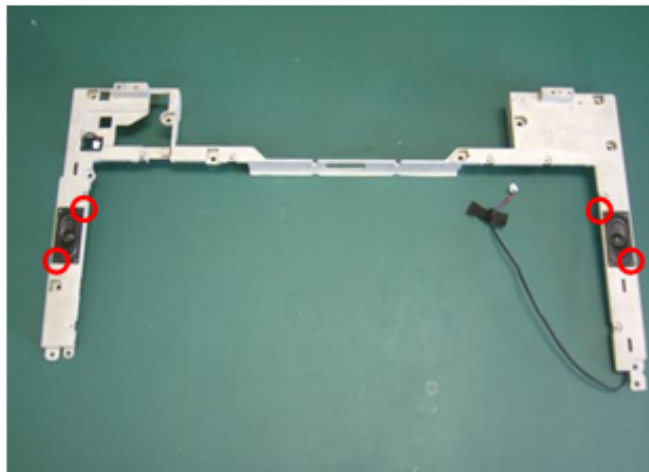
Project Code: 99.K6801.001

Component Part. No.: NA

Page 21 of 35

Model Name: DHA300

4. After release the chassis, remove the 4 as indication.  
Then lift it up from the bottom case. (Figure 2-30)



### Left/ Right Speaker



### Chassis



Subject: C5-501 Service Manual

Part No.: 99.K6801.001

Rev.: 0

Project Code: 99.K6801.001

Doc. No. 99.K6801.001-C5-501-001

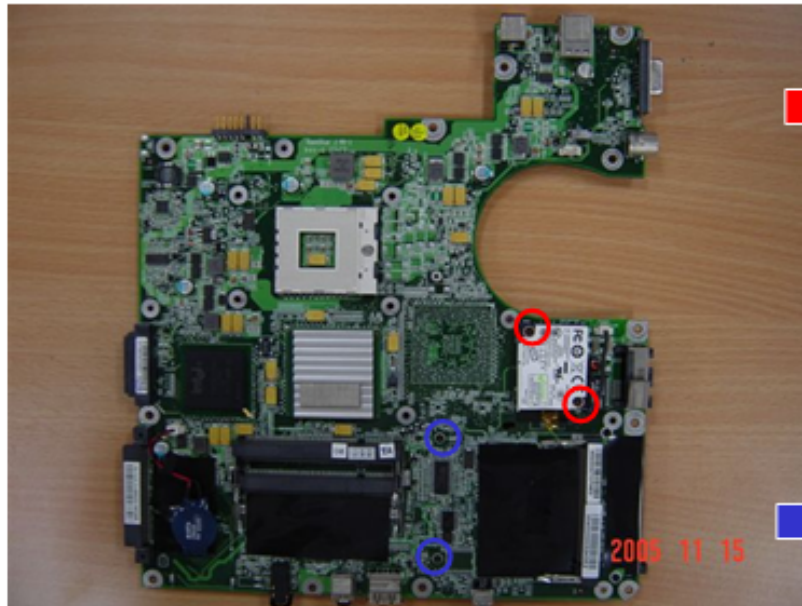
Component Part. No.: NA

Page 22 of 35

Model Name: DHA300

- Reverse the mother board and remove **2** as indication.
- Remove **2** secure from PCMCIA conn to mainboard.

### Modem Card



### PCMCIA



Subject: C5-501 Service Manual

Part No.: 99.K6801.001  
Doc. No.: 99.K6801.001-C5-501-001  
Component Part. No.: NA

Rev.: 0

Page 23 of 35

Project Code: 99.K6801.001

Model Name: DHA300

### Mother Board-1

### Mother Board-2



Subject: C5-501 Service Manual

Part No.: 99.K6801.001

Rev.: 0

Doc. No. 99.K6801.001-C5-501-001

Project Code: 99.K6801.001

Component Part. No.: NA

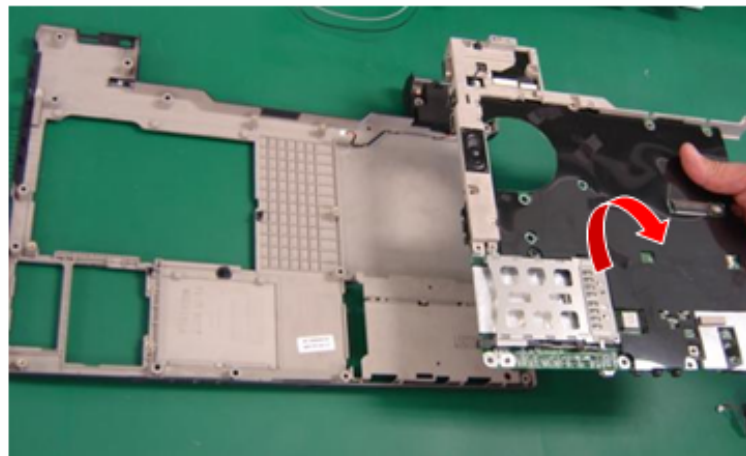
Page 24 of 35

Model Name: DHA300

### 2.2.13 Subwoofer/ Bottom Case

1. Refer to sections 2.2.14 disassembly to remove motherboard assy.

You can get the Bottom Case Unit.



Bottom Case





Subject: C5-501 Service Manual

Part No.: 99.K6801.001

Rev.: 0

Project Code: 99.K6801.001

Doc. No. 99.K6801.001-C5-501-001

Page 25 of 35

Model Name: DHA300

Component Part. No.: NA

### 2.2.14 LCD Bezel

1. Remove the two rubber pads and 2 screws on the corners of the panel. (Figure 2-25)
2. Insert a flat screwdriver to the lower part of the LCD cover and gently pry the frame out. Repeat the process until the LCD bezel is completely separated from the housing.

**Notice: LCD rubber pads is expendables. It will broken after disassembly.**

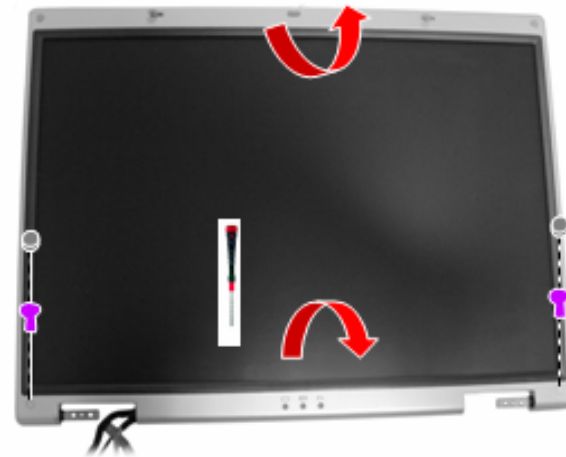


Figure 2-25 Remove LCD Bezel

Subject: C5-501 Service Manual

Part No.: 99.K6801.001

Rev.: 0

Project Code: 99.K6801.001

Doc. No. 99.K6801.001-C5-501-001

Page 26 of 35

Model Name: DHA300

Component Part. No.: NA

### 2.2.15 LCD Bracket/ LCD FFC/ Panel

1. Remove the 4 ; 8 ; 4 screws and disconnect the cable. (Figure 2-26)
2. Remove the 2 ; 2 screws that secure the LCD bracket. (Figure 2-27)

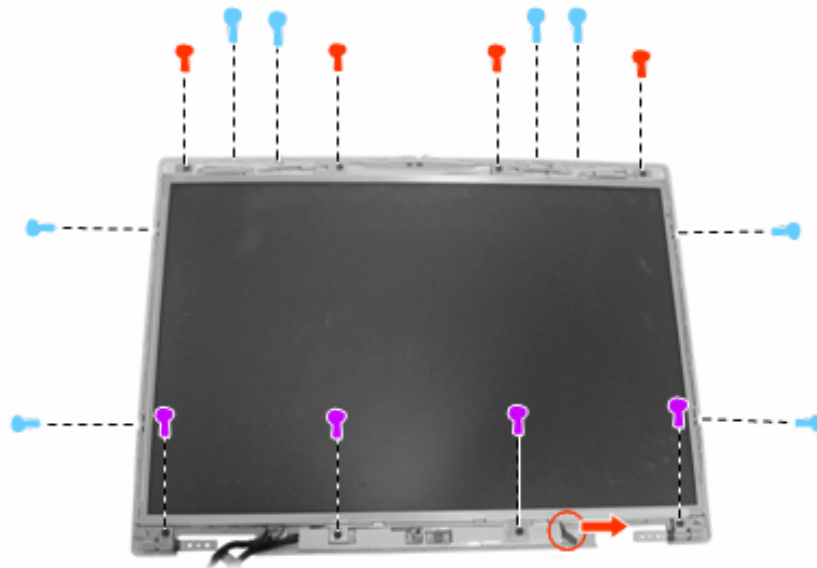


Figure 2-26 Remove 16 screws and disconnect the cable



Figure 2-27 Remove 4 screws to release LCD Hinge bracket

Subject: C5-501 Service Manual

Part No.: 99.K6801.001

Rev.: 0

Project Code: 99.K6801.001

Doc. No. 99.K6801.001-C5-501-001

Component Part. No.: NA

Page 27 of 35

Model Name: DHA300

3. Then you can get LCD Hinge Bracket
4. Disconnect the cable to free the LCD panel. (Figure 2-28)  
Then free the LCD Panel.

### LCD Hinge Bracket



### LCD FFC

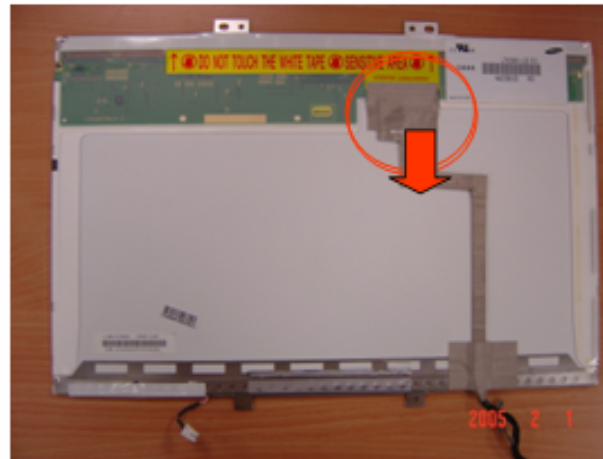


Figure 2-28 Free the LCD panel

Subject: C5-501 Service Manual

Part No.: 99.K6801.001  
Doc. No. 99.K6801.001-C5-501-001

Rev.: 0

Project Code: 99.K6801.001

Component Part. No.: NA

Page 28 of 35

Model Name: DHA300

### 2.2.16 Inverter /Wire Antenna/ LCD Cover

1. Remove the LCD bezel and LCD panel. (Refer to section 2.2.10 Disassembly )
2. Remove the 1 screw fastening the inverter board and disconnect the cable, Then free the inverter board. (Figure 2-29)

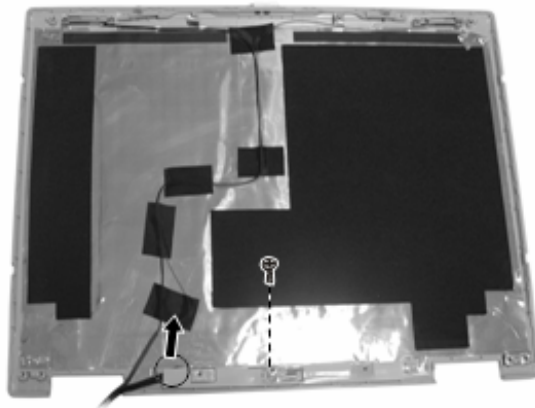


Figure 2-29 Free the inverter board

**Inverter**



**Wire antenna**



**LCD Cover**



Subject: C5-501 Service Manual

Part No.: 99.K6801.001

Rev.: 0

Doc. No. 99.K6801.001-C5-501-001

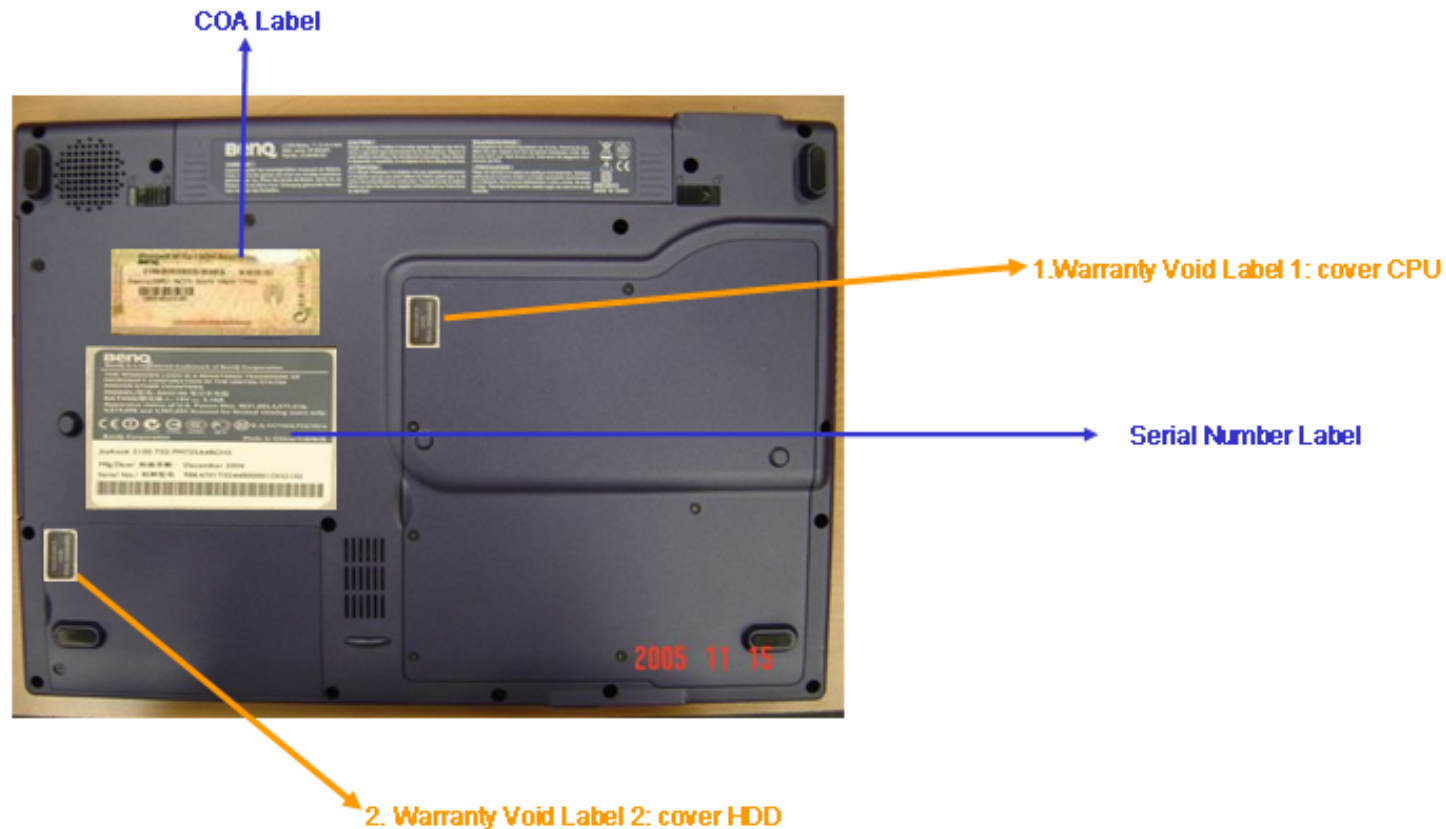
Project Code: 99.K6801.001

Component Part. No.: NA

Page 29 of 35

Model Name: DHA300

### 3. Label on bottom of machine Definition





# Release Notice

Product System (PS)

Subject: C5-501 Service Manual

Part No.: 99.K6801.001

Rev.: 0

Doc. No. 99.K6801.001-C5-501-001

Project Code: 99.K6801.001

Component Part. No.: NA

Page 30 of 35

Model Name: DHA300

A33 Spare Parts FRU List				
CATEGORY	Which Model can Use:	BenQ PN	BenQ Description	MOQ
PANEL	R53/A33/A32	56.91K39.031	LCD 15.4" AUO WXGA B154EW01 V8 Non-Glare	1
	R53/A82/A33	56.91K39.041	LCD 15.4" AUO WXGA B154EW01 V9 Glare	1
	A33	56.07K68.001	LCD 15.4" Samsung, LTN154X3-L0	1
ODD	R31/A33/A32	56.33K49.011	DVD Combo KME UJDA770MT-A G-Baze FW: 1.00	1
	2100/A32/R22/R31/A33	5F.33K45.001	DVD COMBO Philips SCB5265 (Green product)_G-Baze FW:TX08	1
	A33/R31/A32	56.36K49.001	8X DVD-DUAL QSI 8X SDW-082K Double Layer(G-Baze) FW:TX38	1
	A33	56.35K49.001	DVD Dual KME UJ-840BMT2-A S-M (G-baze) FW:1.00 (Green product)	1
MAINBOARD	A33	54.K6801.001	Motherboard (with PCMCIA) A33	1
BATTERY	A33	23.2K450.031	BAT Li-ION/ Sanyo cell - 4400mAh/6cell	1
	A33	23.2K450.041	BAT Panasonic/ Lite-On cell - 4400mAh/6cell	1
ADAPTER	2100/A32/R22/R31/A33	25.10147.011	Adapter 65W 3-pin SADP-65KB BFH Delta	1
ELETRIC	5000G/6000/7000/8100/2000 /2100/A82/S52/A32/R53/S72/A/5200G	54.K1809.011	Wireless LAN Board B+G Intel 2200BG (802.11bg) 862227	1
	R31/R22/A33	CS.54K47.001	WLAN BD Billionton MIWLGRL R22	1
	A33	5D.K6804.001	Modem Board 1456VQL-R2 DHA3	1
	A33	54.K6810.001	Inverter Module A33	1
BASE UNIT	A33/A32	CS.65K49.003	Speaker L A33	1
	A33/A32	CS.65K49.002	Speaker R A33	1
	A33	65.K6803.001	Thermal FAN Module A33	1
	A33/R31	56.17K64.001	Touchpad A33	1
CABLE	A33/A32	CS.50K49.001	LCD Cable A33	1
	A33/A32	CS.50K49.002	Wireless Antenna A33	1
	A33	50.K6801.001	Touchpad FFC Cable A33	5
	A33/A32	CS.65K49.004	LCD Cover	1
	A33/A32	CS.41K49.001	LCD Bezel A33	5



# Release Notice

Product System (PS)

Subject: C5-501 Service Manual

Part No.: 99.K6801.001

Rev.: 0

Doc. No. 99.K6801.001-C5-501-001

Project Code: 99.K6801.001

Component Part. No.: NA

Page 31 of 35

Model Name: DHA300

	A33	65.K6801.001	Top Case A33	1
<b>MECHANICAL</b>	A33	65.K6802.001	Bottom Case A33	1
	A33/A32	33.K4901.001	Chassis under Top Case A33	5
	A33	33.K6801.001	Top Case Shielding A33	5
<b>PARTS</b>	R31/A33	41.K6403.001	ODD Bezel COMBO KME/Philip (G-Baze)	10
	R31/A33	41.K6404.001	ODD Bezel DVD Dual QSI/KME R31(G-Baze)	10
	A33/A32	33.K4701.001	ODD Bracket (fix on bottom case)	10
	A33/A32	CS.65K49.006	LCD Bracket Left A33	10
	A33/A32	CS.65K49.007	LCD Bracket Right A33	10
	A33	42.K6801.001	HDD Door Cover A33	10
	A33	42.K6802.001	CPU Door Cover A33	10
	A33/A32	33.K4903.001	Touchpad Bracket A33	10
	A33/A32	42.K4906.001	LCD Hinge Cover L A33	10
	A33/A32	42.K4907.001	LCD Hinge Cover R A33	10
<b>RUBBER/ SCREW</b>	A33/A32	42.K4908.001	LCD Rear Cover L A33	10
	A33/A32	42.K4909.001	LCD Rear Cover R A33	10
	A32/R31/A33	42.K4902.001	DUMMY CARD PCMCIA A33	10
	A33/A32	65.K4906.001	PCMCIA SLOT CASE A33	10
	2100/R22/A32	65.K4711.001	HDD Case	10
	A32/A33	CS.40K49.001	Mylar Touchpad A33	100
	2100/A33/R22/A32	47.K4703.001	Rubber on LCD Bezel elliptic DH2100	100
	A33/R31/A32	CS.47K49.001	Rubber on LCD Bezel circle A33	100
	2100/R22/A33/R31/A32	40.K4701.001	Mylar Panel Screw A33	100
	A33	40.K6801.001	Mylar Palmrest protect Left A33	100
A33/A32	40.K4905.001	Mylar Palmrest protect Right A33	100	
A32/A33	40.K4906.001	Mylar LCD Cover Protect A33	100	
<b>PACKING</b>	2100/A33/R22/R31/A33	86.00378.3R0	Screw M2L3 black DH2100	100
	2100/A33/R22/R31/A33	86.00376.6R0	Screw,M2.6L6 black DH2100	100
	2100/A33/R22/R31/A33	86.00377.2R5	Screw M2L2.5 white DH2100	100
	A33/A32	44.K4902.001	Inner Carton with handle A33	20
	A33/A32	44.K4901.001	Brown Carton A33	20
	A33/A32	44.K4903.001	Accessory Pizza Box A33 without partition	20



# Release Notice

Product System (PS)

Subject: C5-501 Service Manual

Part No.: 99.K6801.001

Rev.: 0

Doc. No. 99.K6801.001-C5-501-001

Project Code: 99.K6801.001

Component Part. No.: NA

Page 32 of 35

Model Name: DHA300

	A33/A32	44.K4904.001	Partition of Pizza Box	20
	A33	47.K6801.001	Cushion A33	20
	2100/R22/R31/A33	42.K4702.001	Machine Plastic Bag	100
<b>LABEL ON Machine</b>	A33	45.K6807.001	LABEL AGENCY RATING JBA33/E w/o CCC	100
	A33	45.K6807.011	LABEL AGENCY RATING DGT JBA33 E W/ CCC	100
	6000/7000/2100/A32/R22/S72/R31/A33	45.K0804.001	SCREW HOLE SEAL LABEL BLACK(Warranty Label)	100
	A33	45.K6802.001	LABEL Modem MII CHINA A33	100
	A33	45.K6803.001	LABEL Modem SIRIM (Singapore/Malaysia/Vietnam/India) A33	100
	A33/A32	40.K4902.001	BenQ LOGO on LCD Cover A33	100
<b>Label ON CARTON</b>	A33	45.K6801.001	COLOR MACHINE PIX ON CARTON A33	100
	A33	45.K6806.001	Content label Pizza box A33	100
<b>COUNTRY AND LANGUAGE RELATED FRU</b>				
<b>KEYBOARD</b>	A33	56.24K68.TC1	Keyboard Taiwan / HK/ TC A33	10
	A33	56.24K68.SC1	Keyboard PRC / SC A33	10
	A33	56.24K68.US1	Keyboard SG/MY/EN/AU/NZ A33	10
	A33	56.24K68.TI1	Keyboard Thailand / Thai A33	10
	A33	56.24K68.GR1	Keyboard Germany / German A33	10
	A33	56.24K68.IT1	Keyboard Italy / Italian A33	10
	A33	56.24K68.UK1	Keyboard UK / English A33	10
	A33	56.24K68.SP1	Keyboard Spain / Spanish A33	10
	A33	56.24K68.UI1	Keyboard International English/ Netherlands / Dutch /Pan Europe A33	10
	A33	56.24K68.AR1	Keyboard Mid-East / Arabic A33	10
	A33	56.24K68.TR1	Keyboard Turkish A33	10
	A33	56.24K68.SW1	Keyboard Swiss A33	10
	A33	56.24K68.RU2	Keyboard Russian New A33	10
<b>User Manual KIT</b>	A33	56.24K68.BE1	Keyboard Belgian A33	10
	A33	60.K6801.T01	A33 TC Manual Kit	10
	A34	60.K6801.K01	A33 HK Manual Kit	10
	A33	60.K6801.C01	A33 SC Manual Kit	10
	A33	60.K6801.E01	A33 EN Manual Kit (SG/MY/VN/IN)	10
	A33	60.K6801.M01	A33 TH Manual Kit	10
	A33	60.K6801.V01	A33 AU/ZN Manual Kit	10





# Release Notice

Product System (PS)

Subject: C5-501 Service Manual

Part No.: 99.K6801.001

Rev.: 0

Doc. No. 99.K6801.001-C5-501-001

Project Code: 99.K6801.001

Component Part. No.: NA

Page 33 of 35

Model Name: DHA300

	A33	60.K6801.A01	A33 ME/KSA/UAE Manual Kit	10
	A33	60.K6801.N01	A33 TR Manual Kit	10
	A33	60.K6801.G01	A33 GR Manual Kit	10
	A33	60.K6801.Y01	A33 IT Manual Kit	10
	A33	60.K6801.S01	A33 SP/Mexico Manual Kit	10
	A33	60.K6801.D01	A33 NL/Pan Europe Manual Kit	10
	A33	60.K6801.Q01	A33 Switzerland Manual Kit	10
	A33	60.K6801.E02	A33 UK Manual Kit	10
	A33	60.K6801.R01	A33 Russia Manual Kit	10
MS CD KIT XPH	A33	60.K6802.T01	OS KIT TC XPH SP2 A33	10
	A33	60.K6802.C01	OS KIT SC XPH SP2 A33	10
	A33	60.K6802.K01	OS KIT HK XPH SP2 A33	10
	A33	60.K6802.E01	OS KIT TH/AU/NZ/SG/MY/UK/Pan Europe XPH SP2 A33	10
	A33	60.K6802.G01	OS KIT GE XPH SP2 A33	10
	A33	60.K6802.Y01	OS KIT Italy / Italian XPH SP2 A33	10
	A33	60.K6802.S01	OS KIT Spain / Spanish XPH SP2 A33	10
	A33	60.K6802.D01	OS KIT Dutch 3in1 XPH SP2 A33	10
	A33	60.K6802.A01	OS KIT Mid-East / Arabic XPH SP2 A33	10
	A33	60.K6802.N01	OS KIT Turkish XPH SP2 A33	10
	A33	60.K6802.Q01	OS KIT Switzerland XPH SP2 A33	10
	A33	60.K6802.R01	OS KIT Russian XPH SP2 A33	10
	MS CD KIT XPP	A33	60.K6803.T01	OS KIT TC XPP SP2 A33
A33		60.K6803.C01	OS KIT SC XPP SP2 A33	10
A33		60.K6803.K01	OS KIT HK XPP SP2 A33	10
A33		60.K6803.E01	OS KIT TH/AU/NZ/SG/MY/UK/Pan Europe XPP SP2 A33	10
A33		60.K6803.G01	OS KIT GE XPP SP2 A33	10
A33		60.K6803.Y01	OS KIT Italy / Italian XPP SP2 A33	10
A33		60.K6803.S01	OS KIT Spain / Spanish XPP SP2 A33	10
A33		60.K6803.D01	OS KIT Dutch 3in1 XPP SP2 A33	10
A33		60.K6803.A01	OS KIT Mid-East / Arabic XPP SP2 A33	10
A33		60.K6803.N01	OS KIT Turkish XPP SP2 A33	10
A33		60.K6803.Q01	OS KIT Switzerland XPP SP2 A33	10
A33		60.K6803.R01	OS KIT Russian XPP SP2 R31	10



# Release Notice

Product System (PS)

Subject: C5-501 Service Manual

Part No.: 99.K6801.001

Rev.: 0

Doc. No.: 99.K6801.001-C5-501-001

Project Code: 99.K6801.001

Component Part. No.: NA

Page 34 of 35

Model Name: DHA300

Screw List for 8666						
LCD ass'y		qty	Where it is used	change to no-NLK	Torque(kgf.cm)	
1	370102610401	SPC-SCREW;M2.6L4,K-HD,t0.8,NIB/NLK	4	lock hinge+housing and bracker+housing*2		2.5~3.0
2	370102030301	SPC-SCREW;M2L3,K-HD,1,NIB/NLK	4	lock cable*2 and Inverter BD*2		1.2~1.5
3	371102010252	SCREW;M2L2.5,K-HEAD(+),NIB/NLK	8	lock bracket+LCD*4 and bracket+housing*4		1.0~1.2
4	370102610603	SPC-SCREW;M2.6L6,K-HD,NIB/NLK	4	lock bracket+housing*2 and lcd_cover+housing*2		2.5~3.0
Sys ass'y(no ME kit)						
1	371102010252	SCREW;M2L2.5,K-HEAD(+),NIB/NLK	4	lock shielding	Yes	1.2~1.5
2	370102030301	SPC-SCREW;M2L3,K-HD,1,NIB/NLK	11	lock modem*2 and HDD_cover*2 and CPU_cover*7	Yes	modem:1.5~2.0 cover:1.2~1.5
3	342686900019	T-SCREW;M26L6_5,8066	4	lock speaker	Yes	1.5~2.0
4	370102610401	SPC-SCREW;M2.6L4,K-HD,t0.8,NIB/NLK	7	lock M/B*2 and daughter_BD*1 and housing*3 and HDD*1	Yes	M/B:2.5~3.0 D_BD:2.5~3.0 housing:3.0~3.5 HDD:2.5~3.0
5	370102610603	SPC-SCREW;M2.6L6,K-HD,NIB/NLK	22	lock LCD*4 and housing*21 and ODD*1	Yes, only for 底座部分	LCD:4.0~4.5 housing:3.0~3.5 ODD:2.5~3.0



# Release Notice

Product System (PS)

Subject: C5-501 Service Manual

Part No.: 99.K6801.001

Rev.: 0

Doc. No. 99.K6801.001-C5-501-001

Project Code: 99.K6801.001

Component Part. No.: NA

Page 35 of 35

Model Name: DHA300

6	341680900001	SPC SCREW;#4-1/4,8050	2	lock MB VGA port*2		2.0~2.5
7	341677000002	SPRING;SCREW,HEATSINK,LYNX	4	lock Heatsink		2.0~2.2
					Yes	
<b>340 ass'y( ME kit)</b>						
1	370103010405	SPC-SCREW;M3L4,NIW,K-HD,T0.3	4	HDD drive+shielding		2.5~3.0
2	370102010201	SPC-SCREW;M2L2,NIW,K-HD,t=0.8,NLK	2	Rom&rom bracket	Yes	1.5~2.0
	373101713502	T-SCREW;B.M1.7L3.5,HD04t0.25,0,BCT	3	ODD bezel(because the ODD type is variety,so Torque is variety)		M1.7:1.0~1.2 M2.0:1.5~2.0