

Disassembly Procedure

Please follow the information provided in this section to perform the complete disassembly procedure of the notebook. Be sure to use proper tools described before.

ASUS W3000A Series Notebook consists of various modules. This chapter describes the procedures for the complete notebook disassembly. In addition, in between procedures, the detailed disassembly procedure of individual modules will be provided for your service needs. The disassembly procedure consists of the following steps:

- Battery Module
- HDD Module
- Optical Drive Module
- CPU Module
- Second Memory Module
- Mini PCI Module
- Keyboard Module
- First Memory Module
- LCD Module
- Top Case Module
- Motherboard Module

BATTERY

Battery Module

The illustration below shows how to remove the battery module.

1. Press latch to open the battery module, then lift battery module away from the system.



HDD
MODULE

HDD Module

The illustrations below show how to remove the HDD module from the notebook.

Removing HDD Module

1. Remove 1 screw (M2*4L(K)), then remove the HDD door.



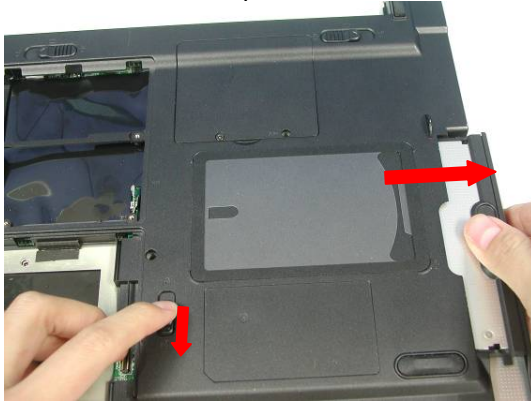
2. Lift the hard disk module and disconnect the FPC then take away the hard disk module.



OPTICAL
DRIVE
REMOVAL

Optical Drive Module

Press latch here then pull it out.



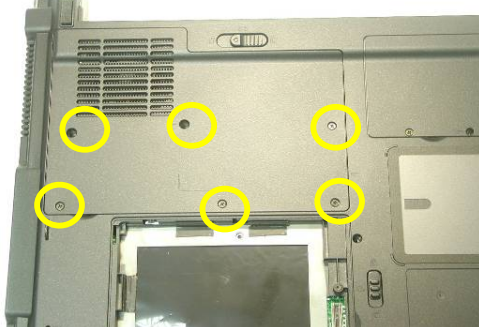
CPU MODULE
REMOVAL

CPU Module

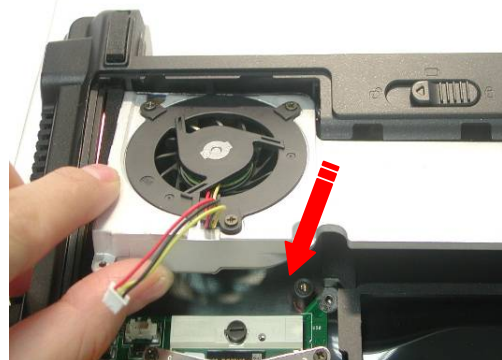
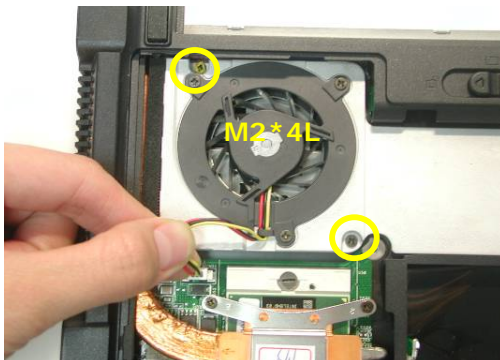
The illustrations below show how to remove the CPU module from the notebook.

Removing CPU

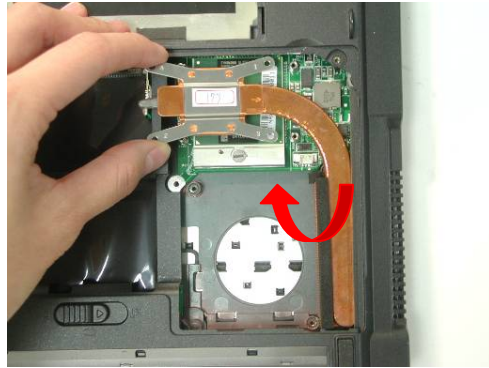
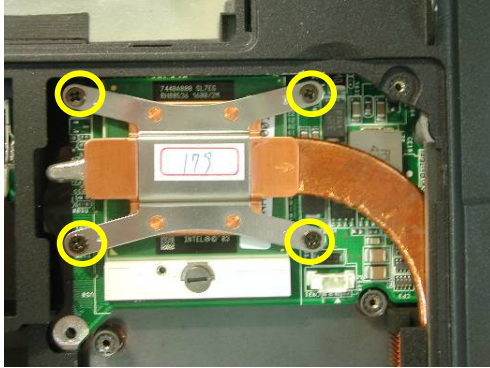
1. Remove 6 screws(M2*4L(K)) and take the Fan bracket away.



2. Disconnect the FAN connector and remove 2 screws(M2*4L(K)) then take away the Fan Module.



3. Remove the 4 screws (M2*4L(K)) upon the thermal module and take away the CPU heat sink module gently



4. Turn the non-removable screw here 180 degrees counter-clockwise to loosen the CPU and take the CPU away



Note: If thermal module has no thermal pad on it, please plus a thermal pad on the CPU die before assembling.

SECOND
MEMORY
MODULE

Second Memory Module

The W3000A Series Notebook does not have onboard RAM. There are two SO-DIMM sockets for installing SO-DIMM RAM. It can upgrade the total memory size up to 2GB with a 1GB module on each socket.

MEMORY
REMOVAL

Removing Memory module

1. Pull 2 latches
2. Pop the module up to a 45° angles, and then pulling out the module in that angle.



WIRELESS
LAN
MODULE

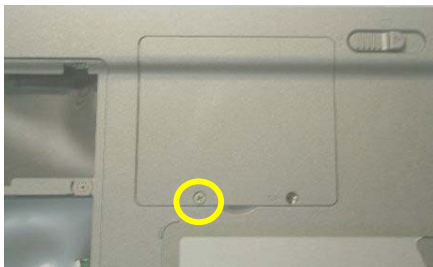
Wireless LAN Module

This slot usually has Wireless LAN module when leaving the factory, this slot is for optional system upgrade.

WIRELESS
LAN
REMOVAL

Removing Wireless LAN Module

1. Remove 1 screw (M2*4L(K)), then take the mini-PCI cover off.



2. Remove 2 Antenna cables from Wireless LAN Module



3. Remove the Wireless LAN module by opening the 2 latches aside, which will pop the module up to an angle of 30°, then pull out the module in that angle just like memory module.



KEYBOARD

Keyboard Module

The illustration of below shows how to remove the keyboard

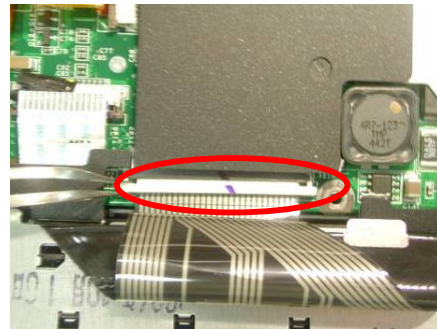
K / B COVER
REMOVAL

Removing Keyboard and Keyboard Cover

1. Remove 2 screws (M2*4L(K))



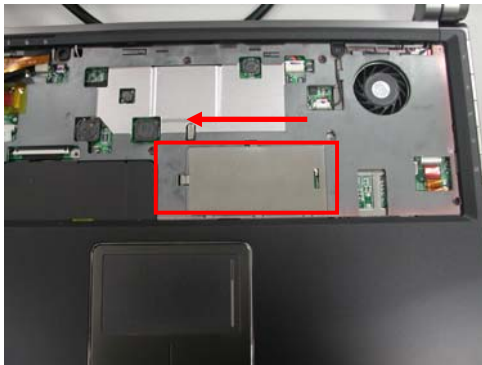
2. Unlock 3 keyboard latches then pull out the keyboard forward and lay the keyboard on the front side then disconnect the FPC.



FIRST
MEMORY
MODULE
REMOVAL

First Memory Module

1. The first memory module is under keyboard. Push the memory cover to the left side and lift the memory cover and open the two latches to pop up memory module at 45 degrees angle then pull it out.

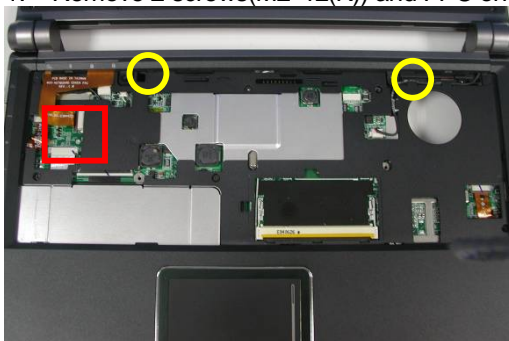


LCD
MODULE

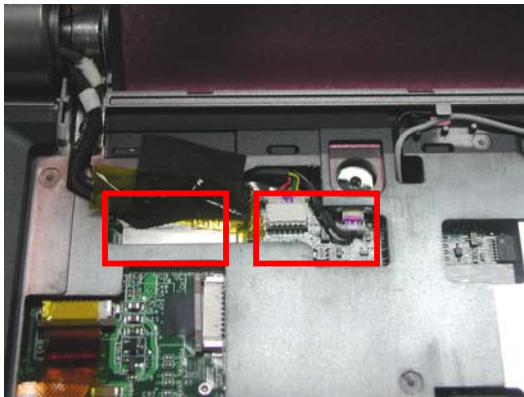
LCD Module

The illustrations below show how to remove and disassemble the LCD module. The module contains LCD panel, Inverter board, LCD Hinge bracket, Hinge cover, LCD front cover, LCD back cover

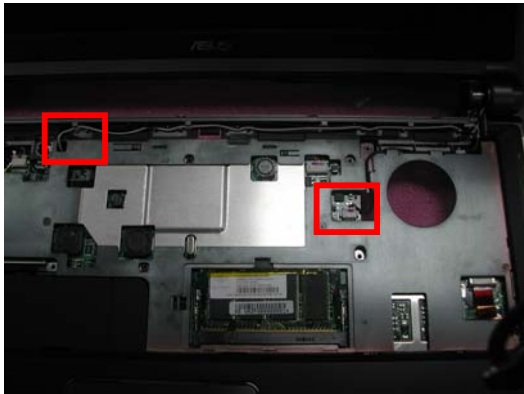
1. Remove 2 screws(M2*4L(K)) and FPC on top case and take away the Keyboard Cover.



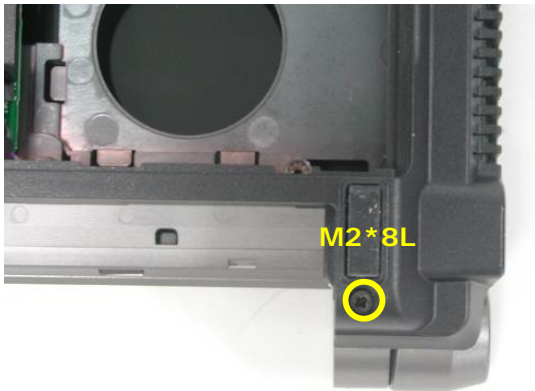
2. Remove Coaxial cable and inverter cable



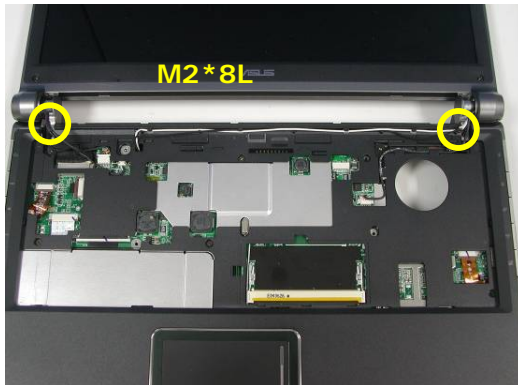
3. Remove Antenna and switch cable.



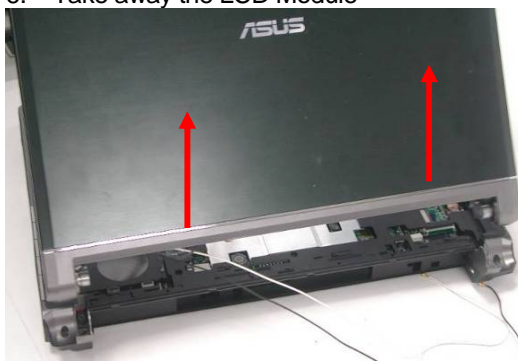
4. Remove 2 screws(M2*8L(K)) on bottom case



5. Remove 2 screws(M2*8L(K)) on both ends



6. Take away the LCD Module



LCD
REMOVAL

Removing LCD Module

1. Remove 5 rubber pads and 5 screws(M2 x 4L) from LCD module.

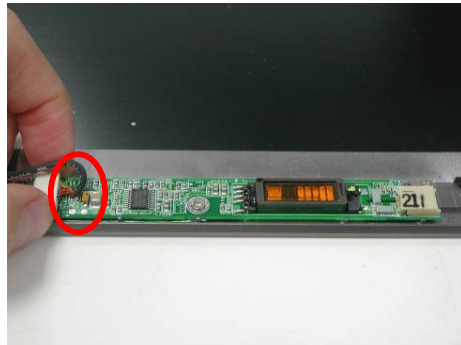
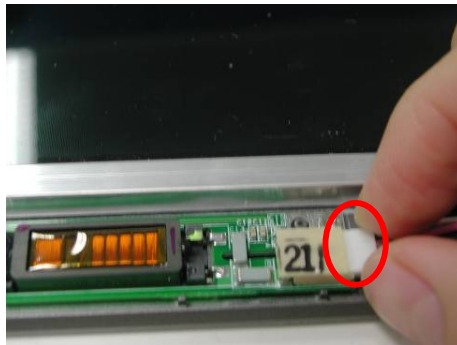


2. Prying the inside edges of the top front bezel, then separate it from LCD back cover and take

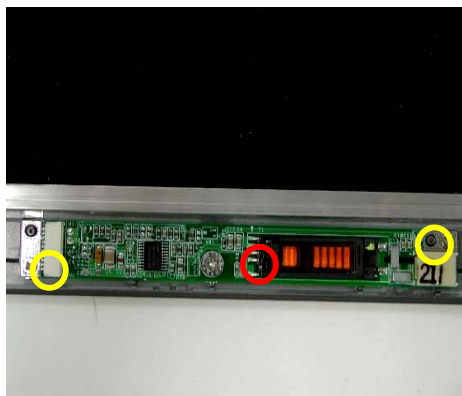
LCD front bezel away.



3. Disconnect both inverter cable.



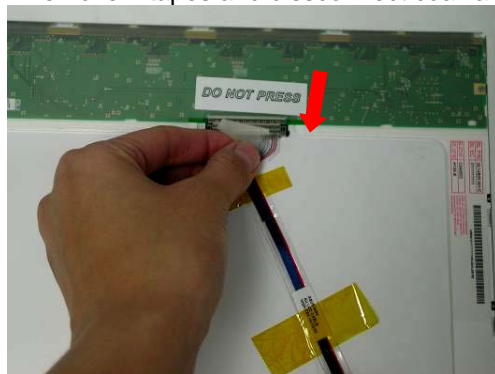
4. Remove 1 screws (M2*4L(K)) and 2 screws (M2*3L(K)) take Inverter board off.



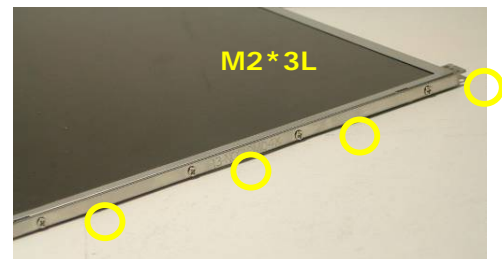
5. Remove 8 screws(M2*4L(K)) and take the LCD panel off .



- Remove 2 tapes and disconnect coaxial cable then take it away.



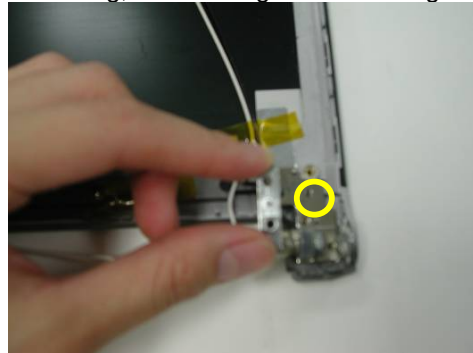
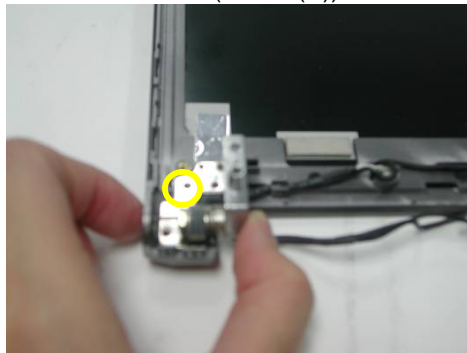
- Finally, Remove 4 screws(M2*3L(K)) on the right LCD bracket , and 4 screws on the left side to disassemble LCD brackets.



- Remove 1 screw(M2*4L(K)) and take the switch board off.



9. Secure 1 screw(M2*4L(K)) on left and right side hing,then take right and left hinge off.



10. Take away the Power button.



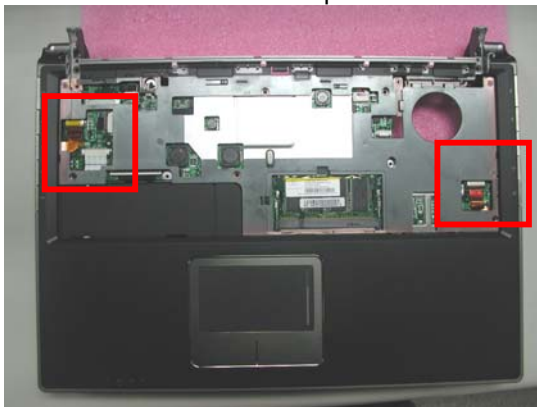
11. Remove 2 screws (M2*4L(K))and take away both antennas



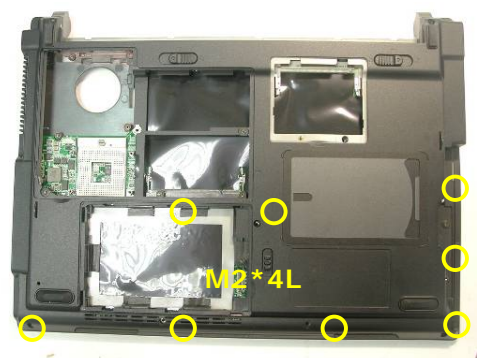
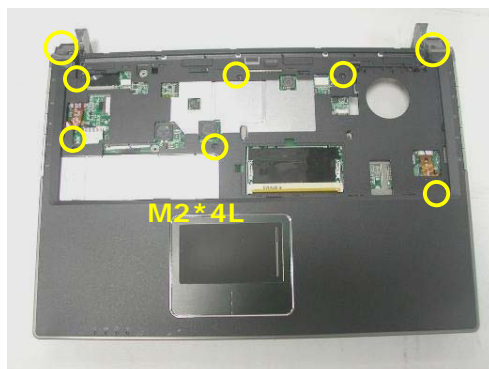
TOP CASE
MODULE
REMOVE

Removing Top Case Module

1. Disconnect All FPC on top case.



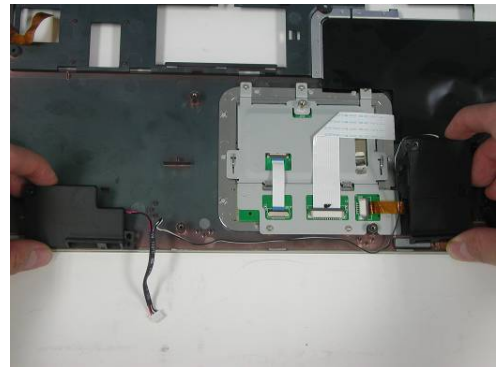
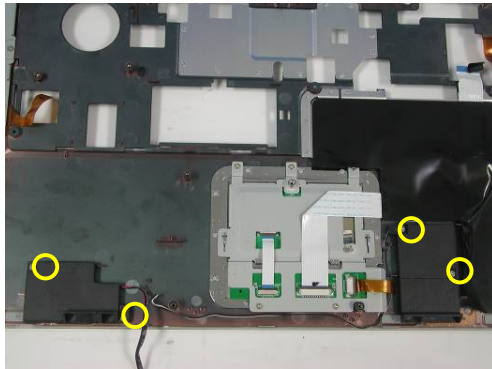
2. Remove 8 screws (M2*4L(K)) on the top case and 8 screws (M2*4L(K)) on the bottom case.



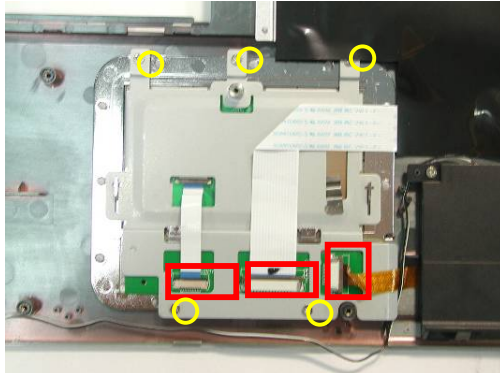
3. Separate the top case module from the bottom case module.



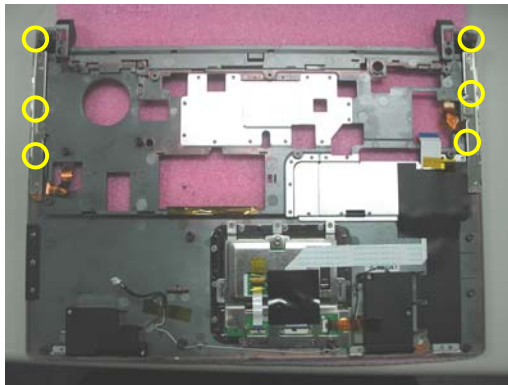
4. Remove 4 screws(M2*4L(K)) and take away both speaker.



5. Disconnect touch pad FPC cables and remove 5 screws(M2*3L(K)) then take touch pad bucket off and take touch pad away.



6. Remove 6 screws (M2*2L(K)) and take away both side key modules



Motherboard module

The illustrations below show how to disassemble and remove the Motherboard module, the blue tooth module and the modem module.

Removing Motherboard Module

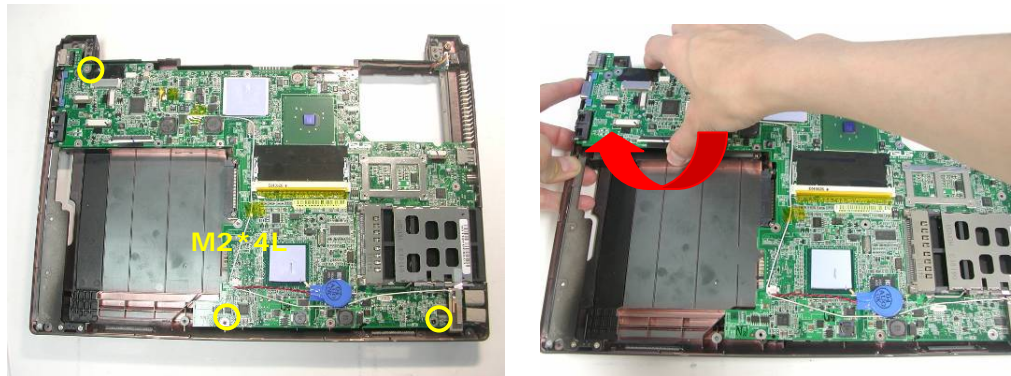
1. Disconnect the power cable



2. Remove 3 screws (M2*4L(K)) and take away the Motherboard Module from the left side.

MOTHERBOARD
MODULE

MDC
MODULE
REMOVAL



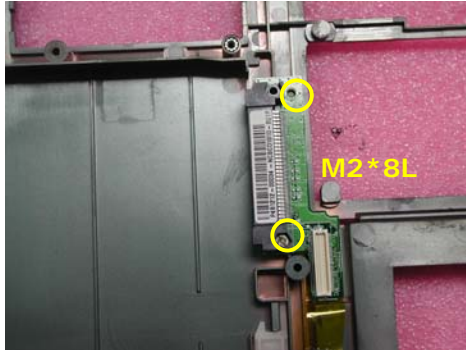
3. Turn the mother board around, remove 2 screws (M2*4L(K)), disconnect the modem cable.



4. Remove the blue tooth module.



5. Remove 2 screws (M2*8L(K)) and remove the ODD connector



6. Remove the power cable and 1 screw to remove the DC-in jack board.

