

SW1 Disassembly Procedure

Please follow the information provided in this section to perform the complete disassembly procedure of the notebook. Be sure to use proper tools described before.

SW1 Series Notebook consists of various modules. This chapter describes the procedures for the complete notebook disassembly. In addition, in between procedures, the detailed disassembly procedure of individual modules will be provided for your service needs.

The disassembly procedure consists of the following steps:

- Battery Module
- Keyboard Module
- LCD Module
- ODD Module
- HDD Module
- CPU Module
- Memory Module
- Top Cover Module
- Main Board Module

BATTERY

Battery module

The illustration below shows how to remove the Battery Module.

Turn the notebook over, unlock latches and remove the Battery pack from bottom side of the notebook.



K/B MODULE

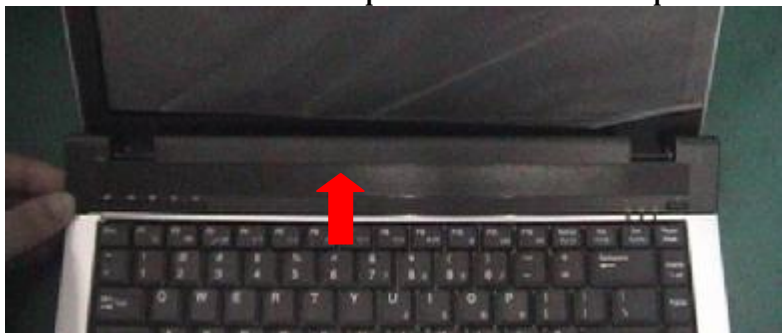
. Keyboard Module

The illustration below shows how to remove the K/B cover and Keyboard Plate.

K/B COVER
REMOVAL

Removing K/B Cover

1. Unclench K/B Cover at red loop in the chart and drive up it.



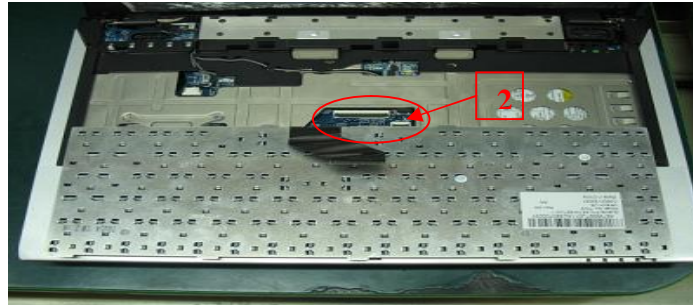
K/B REMOVAL

Removing K/B

1. Carefully separate Keyboard Plate from Top Cover in the direction of arrow in the chart.
2. Disconnect K/B Cable from Main Board.



DISASSEMBLY PROCEDURE



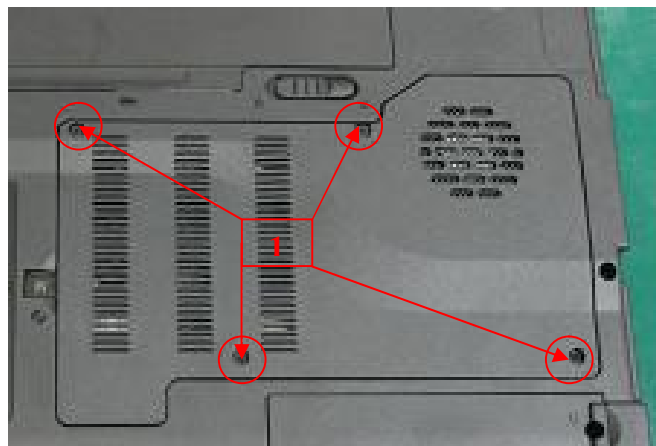
L C D

LCD module

The illustrations below show how to remove and disassemble the LCD Module. The module contains LCD Panel, Inverter Board, LCD Hinge Bracket, Hinge Cover, LCD Bezel and LCD Cover.

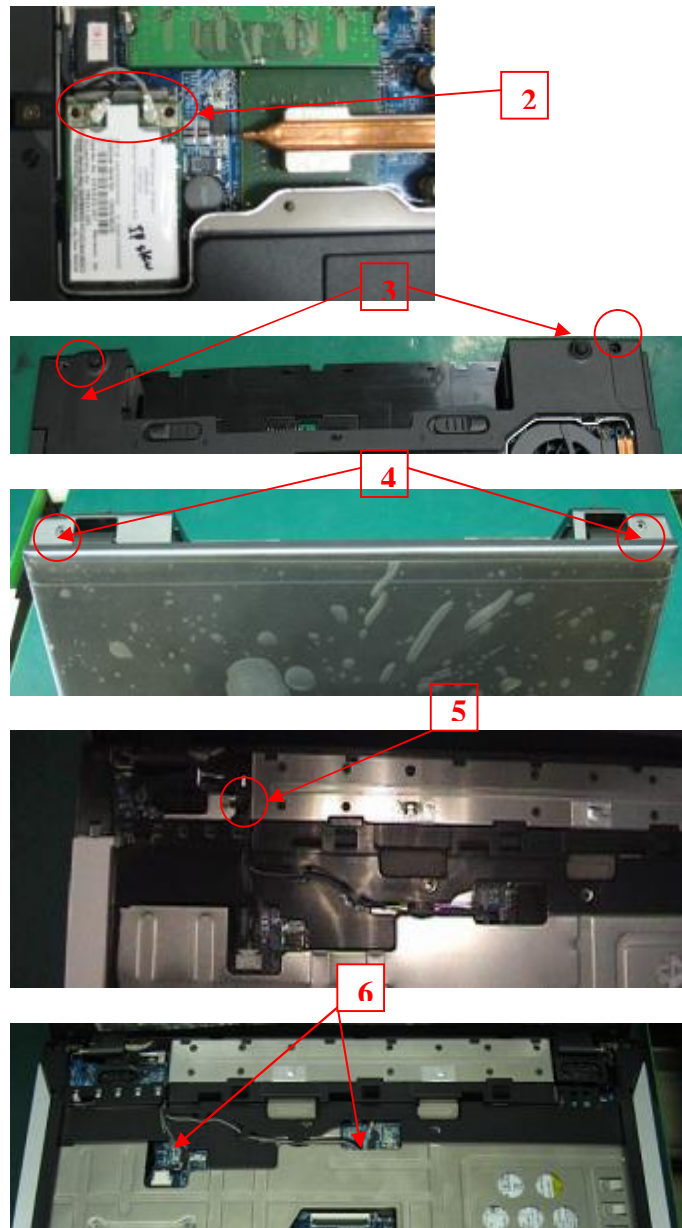
L C D R E M O V A L

Removing LCD Module



1. Release 4pcs screw on Base Door.
2. Pull out Antenna Conn.
3. Release 2pcs screw on rear Base Cover.
4. Release 2pcs screw on side Base Cover.
5. Release the screw of LCD ground cable.
6. Pull out Antenna Cable, MIC Phone Cable , LCD Cable& LCD Module.

DISASSEMBLY PROCEDURE



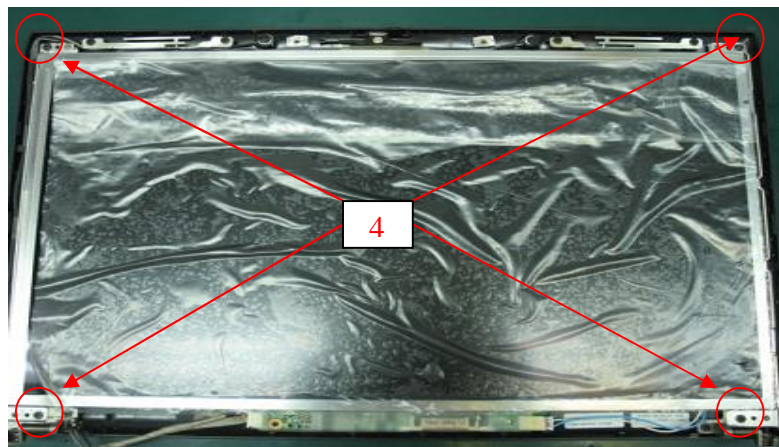
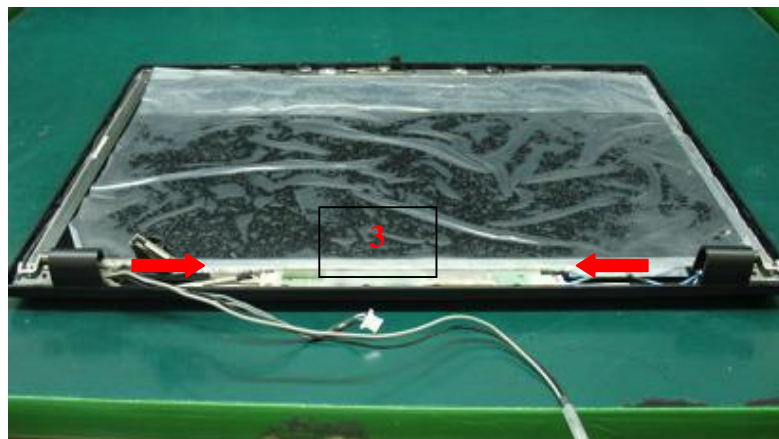
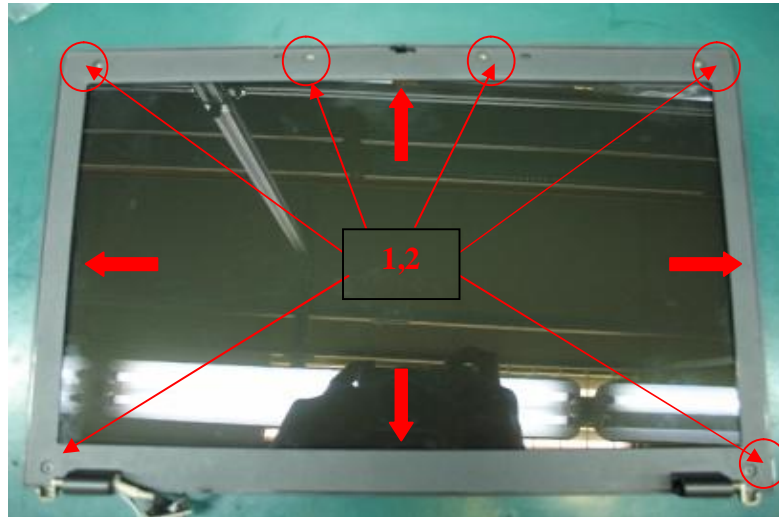
L C D
D I S - A S S E M B L
Y

Disassembling LCD Module

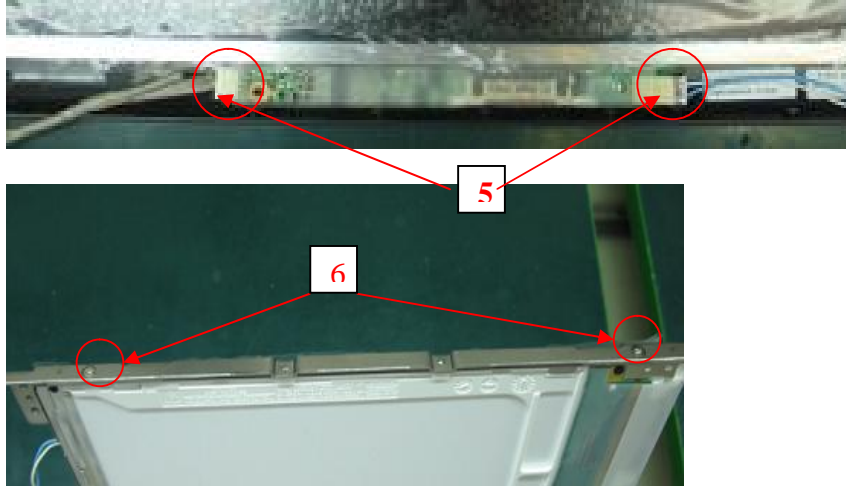
1. Remove 6pcs rubber pads and release 6pcs screws from the LCD Module
2. Open inside four edges of LCD Bezel with your finger, and then remove LCD Bezel from LCD Module.
3. Remove Hinge Cover L & R.
4. Release 4pcs screws from LCD Panel and LCD Cover.
5. Disconnect left and right cable on the Inverter board.

DISASSEMBLY PROCEDURE

6. Disassemble LCD Panel and release 4pcs screw on the both LCD Bracket.



DISASSEMBLY PROCEDURE



ODD MODULE

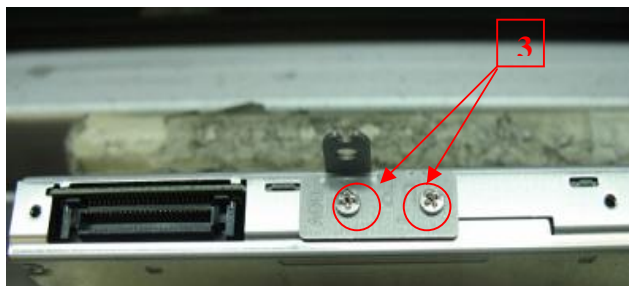
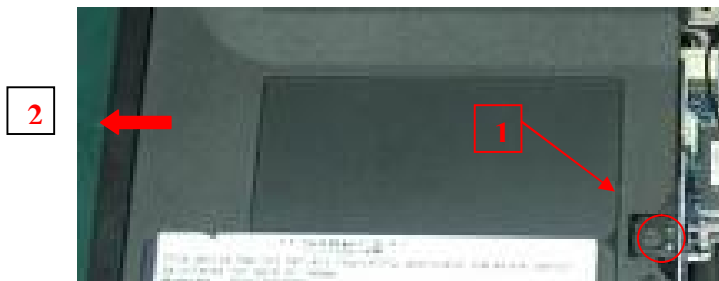
ODD Module

The illustrations below show how to remove the ODD Module from the notebook.

ODD MODULE REMOVAL

Removing ODD Module

1. Release 1pcs screw on the rear Base Cover.
2. Pull out the ODD Module from bottom side of notebook.
3. Release 2pcs screw on the ODD Bracket.



HDD MODULE

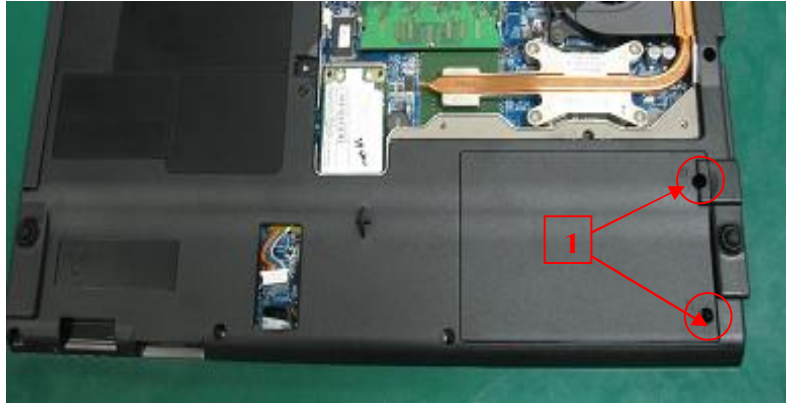
HDD Module

The illustrations below show how to remove the HDD Module from the notebook.

HDD MODULE
REMOVAL

Removing HDD Module

1. Release 2pcs screws from bottom of notebook.
2. Pull out the HDD module from notebook.



MEMORY
REMOVAL

Memory Module

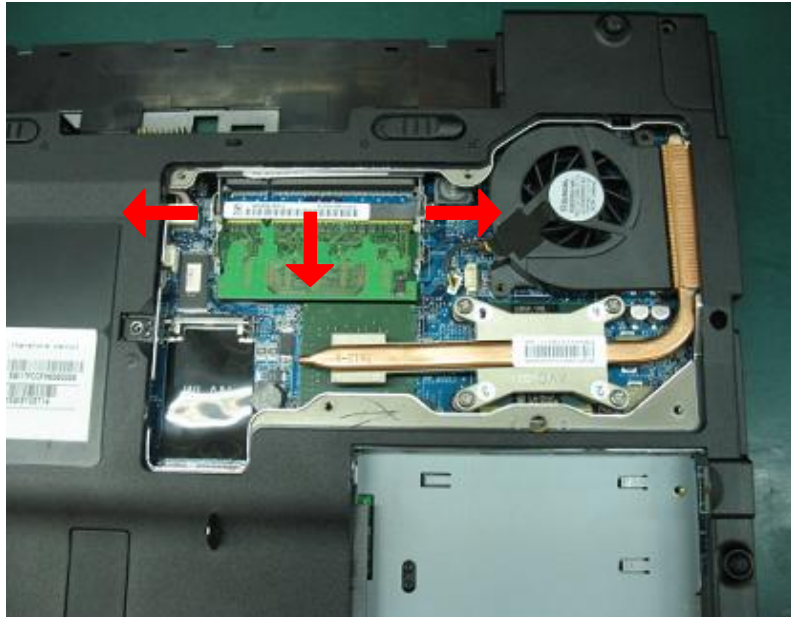
The illustrations below show how to remove the Memory module from the notebook. The SW1 Series Notebook comes standard without memory onboard.

Removing Memory module

If there is an existing memory, remove it by opening the latches, which will pop the module up to a 45° angle, and then pulling out the module in that angle.

MEMORY
REMOVAL

DISASSEMBLY PROCEDURE



C P U

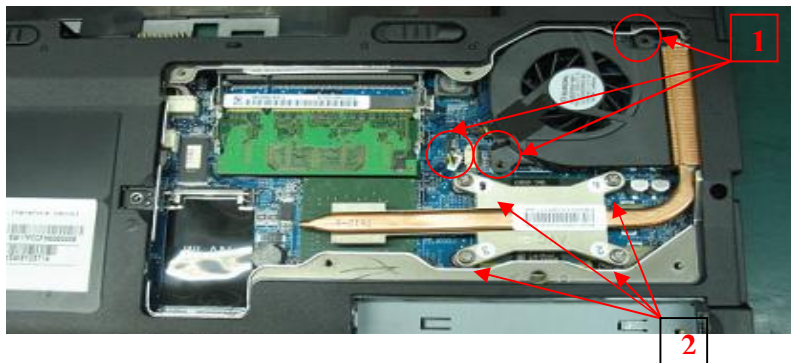
CPU Module

The illustrations below show how to remove the CPU module from the notebook. The module contains CPU, CPU Thermal Pad and CPU Thermal Module.

Removing CPU

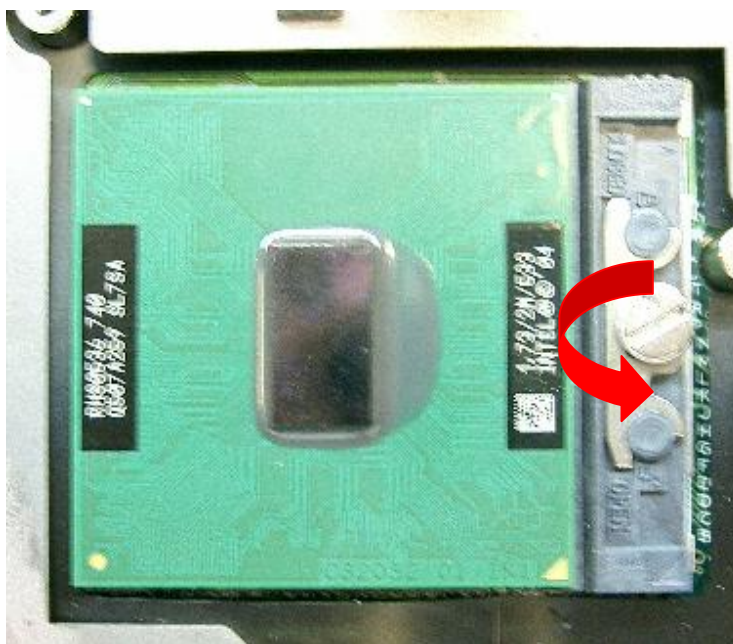
1. Release 2pcs screw on Fan, pull out Fan Cable and remove Fan Module.
2. Release 4pcs screw with 4,3,2,1 order on the Cooler and pull out Cooler.

C P U R E M O V A L



DISASSEMBLY PROCEDURE

3. To unlock CPU with minus screw driver and follow the direction of arrow below.
4. Carefully pull out CPU upwards with your hand.



TOP COVER MODULE.

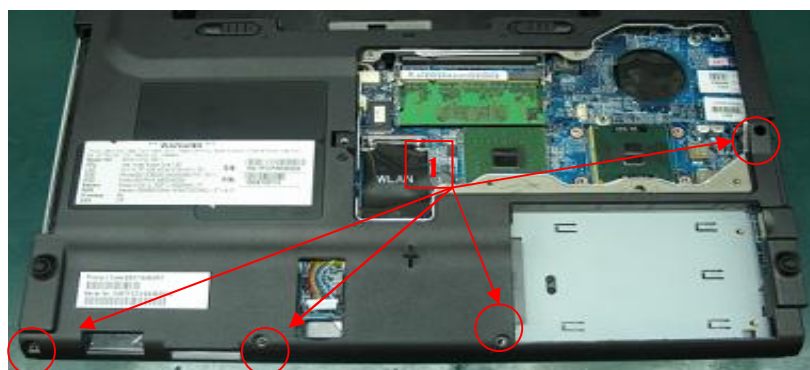
TOP Cover module

The illustrations below show how to disassemble and remove the Top Cover Module of the notebook. The module contains the Top Cover itself and Touch Pad Module.

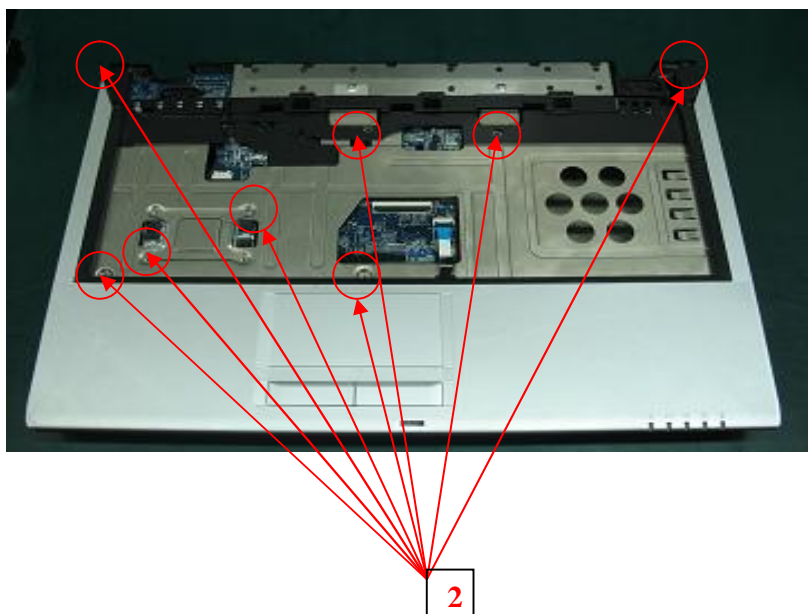
TOP COVER MODULE

Removing Top Cover Module

1. Release 7pcs screws on the Base.
2. Release 8pcs screw on the Top.
3. Remove the Top Cover from above side of Top Cover.



DISASSEMBLY PROCEDURE

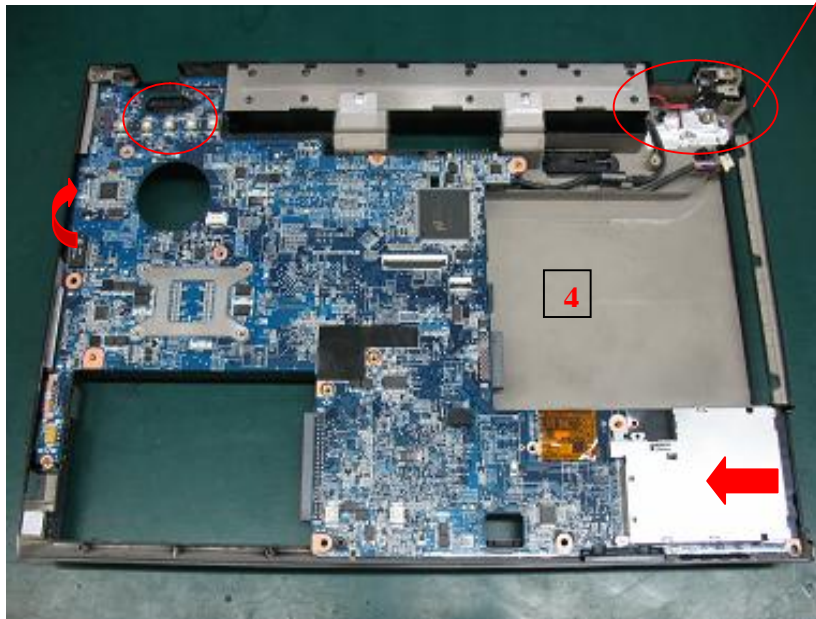


M / B M O D U L E R E M O V A L

Removing Motherboard module

1. Release 7pcs screws on the Main Board.
2. Remove HDD bracket & Modem cable.
3. Pull out DB/B and pull out Speaker R.
4. Pull out M/B Module carefully from right side in the Base Cover to remove DVI or CRT connector and Modem Connector, and remove 1394 Connector and Audio Jack to separate the M/B from Base Cover.
5. Pull out Speaker L and remove IO/B cable & Power Jack cable.

DISASSEMBLY PROCEDURE



Remove IO board and speaker